

# 19 W. Daniels St. Apt.2

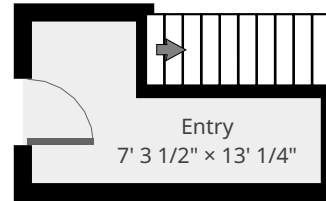
1st Floor



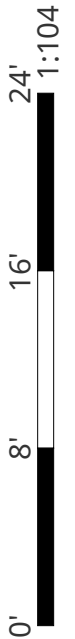
**Nazca Properties**  
manager@nazcaproperties.com  
513-535-2154

## Statistics

Area: 1538 sq ft  
3 Floors  
3 Bedrooms  
2 Bathrooms

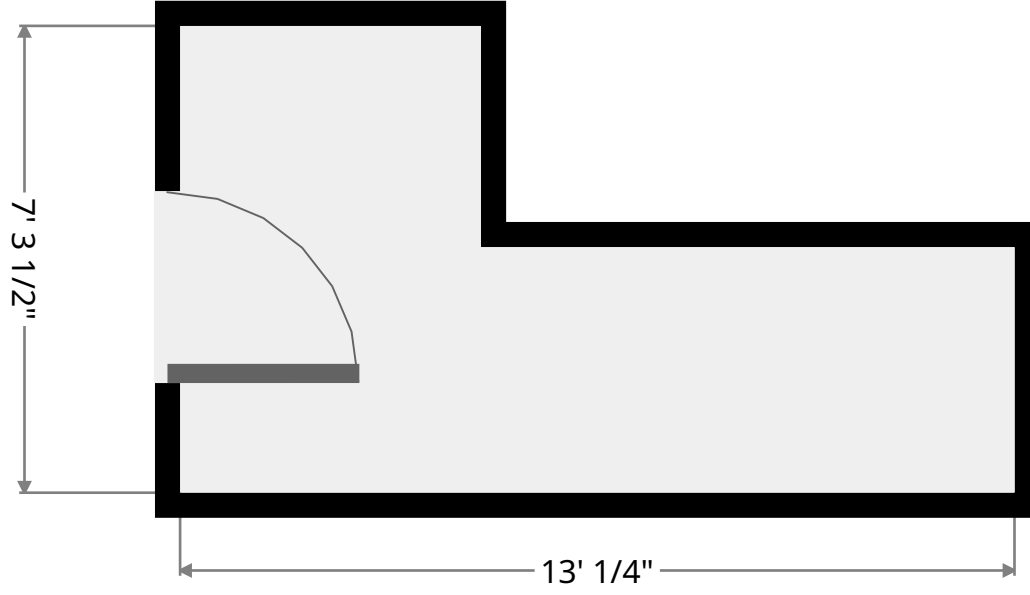
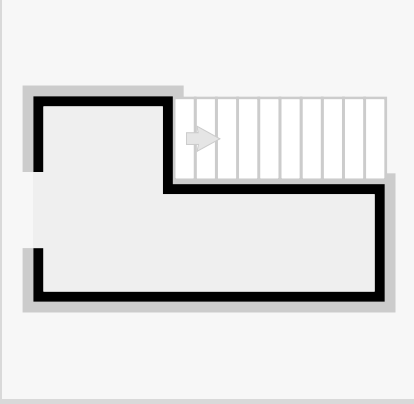


THIS FLOORPLAN IS PROVIDED WITHOUT WARRANTY OF ANY KIND. NAZCA PROPERTIES  
DISCLAIMS ANY WARRANTY INCLUDING, WITHOUT LIMITATION, SATISFACTORY QUALITY OR  
ACCURACY OF DIMENSIONS.



# Entry

Width: 7' 3 1/2"  
Length: 13' 1/4"  
Area: 66.05 sq ft  
Perimeter: 40' 7 1/4"



THIS FLOORPLAN IS PROVIDED WITHOUT WARRANTY OF ANY KIND. NAZCA PROPERTIES  
DISCLAIMS ANY WARRANTY INCLUDING, WITHOUT LIMITATION, SATISFACTORY QUALITY OR  
ACCURACY OF DIMENSIONS.

# 19 W. Daniels St. Apt.2

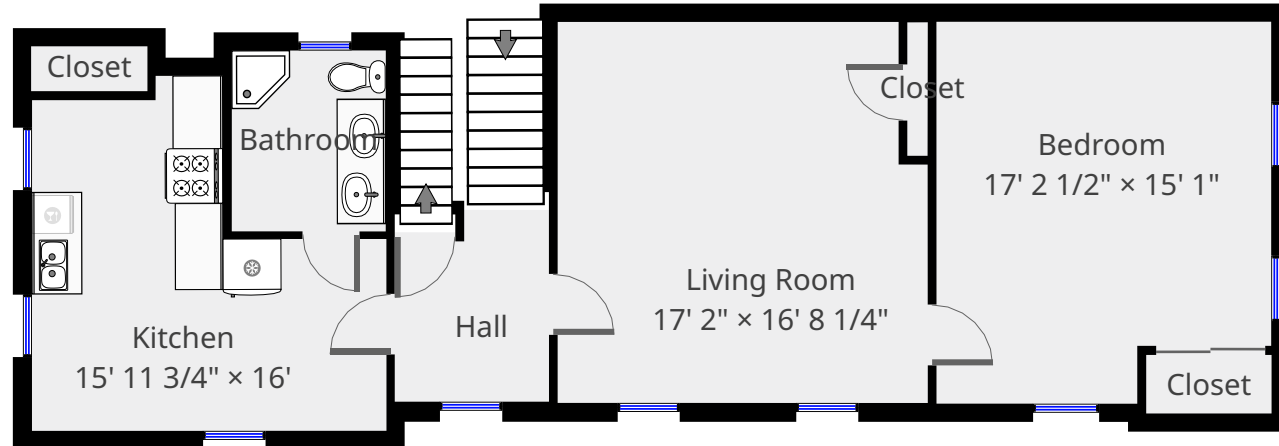
2nd Floor



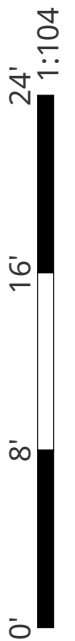
**Nazca Properties**  
manager@nazcaproperties.com  
513-535-2154

## Statistics

Area: 1538 sq ft  
3 Floors  
3 Bedrooms  
2 Bathrooms

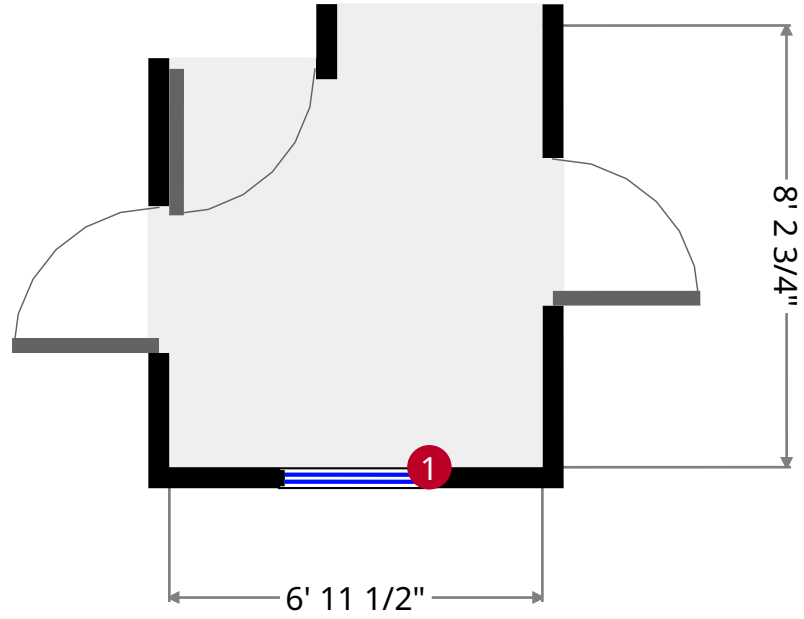
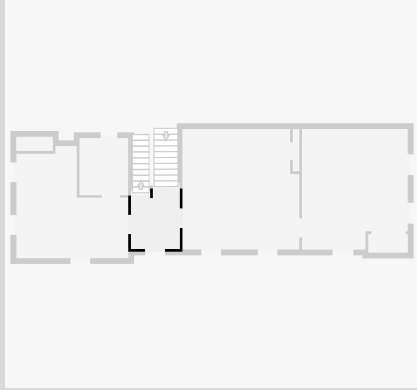


THIS FLOORPLAN IS PROVIDED WITHOUT WARRANTY OF ANY KIND. NAZCA PROPERTIES  
DISCLAIMS ANY WARRANTY INCLUDING, WITHOUT LIMITATION, SATISFACTORY QUALITY OR  
ACCURACY OF DIMENSIONS.



# Hall

Width: 6' 11 1/2"  
Length: 8' 2 3/4"  
Area: 54.07 sq ft  
Perimeter: 30' 4 1/2"  
Ceiling Height: 9' 10 1/2"



1



Hung Window

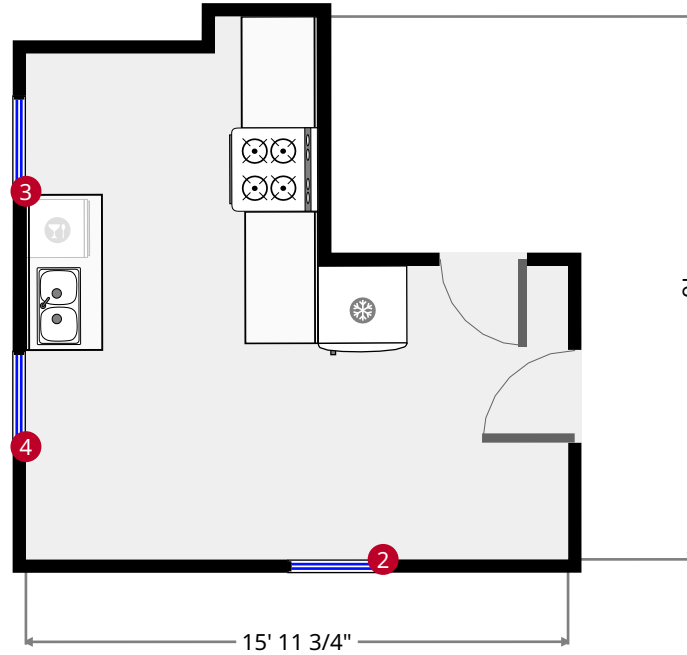
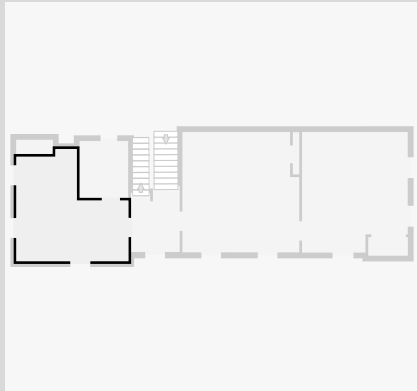
- Height: 6' 4 3/4"

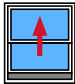
THIS FLOORPLAN IS PROVIDED WITHOUT WARRANTY OF ANY KIND. NAZCA PROPERTIES  
DISCLAIMS ANY WARRANTY INCLUDING, WITHOUT LIMITATION, SATISFACTORY QUALITY OR  
ACCURACY OF DIMENSIONS.





# Kitchen

Width: 15' 11 3/4"  
 Length: 16'  
 Area: 195.29 sq ft  
 Perimeter: 63' 11 1/4"  
 Ceiling Height: 9' 10 1/4"

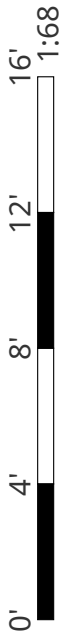


2  Hung Window - Height: 6' 5"

3  Hung Window - Height: 6' 5"

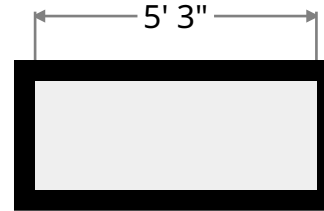
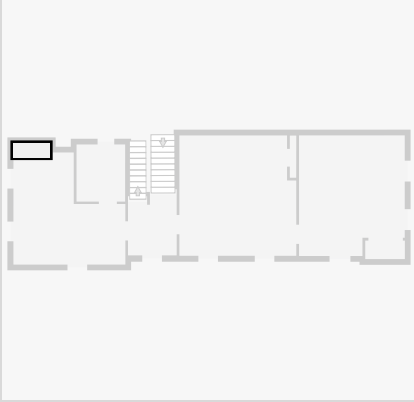
4  Hung Window - Height: 6' 5"

THIS FLOORPLAN IS PROVIDED WITHOUT WARRANTY OF ANY KIND. NAZCA PROPERTIES  
 DISCLAIMS ANY WARRANTY INCLUDING, WITHOUT LIMITATION, SATISFACTORY QUALITY OR  
 ACCURACY OF DIMENSIONS.



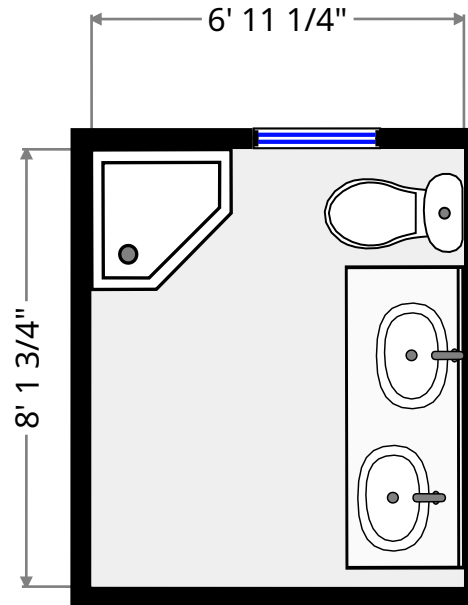
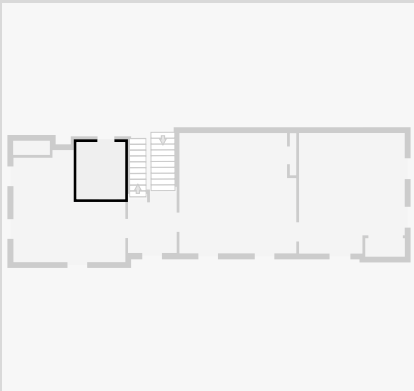
## Closet

Width: 2' 1/4"  
Length: 5' 3"  
Area: 10.60 sq ft  
Perimeter: 14' 6 1/4"



## Bathroom

Width: 6' 11 1/4"  
Length: 8' 1 3/4"  
Area: 56.57 sq ft  
Perimeter: 30' 2 1/4"  
Ceiling Height: 9' 9"

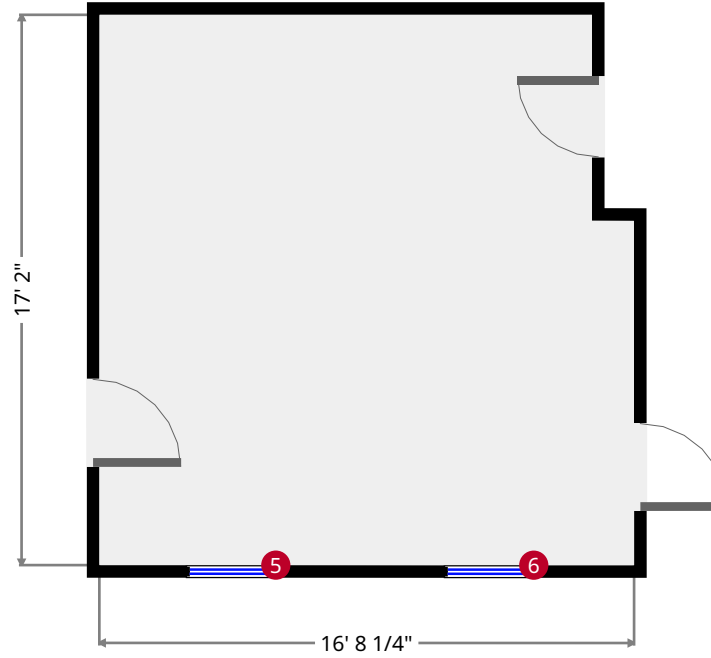
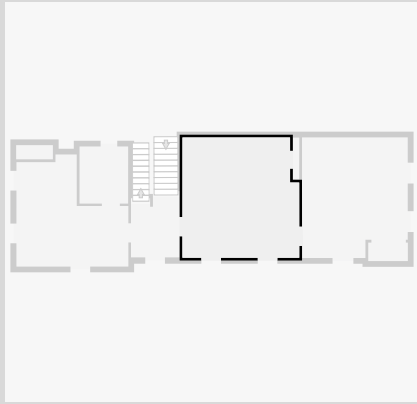


THIS FLOORPLAN IS PROVIDED WITHOUT WARRANTY OF ANY KIND. NAZCA PROPERTIES  
DISCLAIMS ANY WARRANTY INCLUDING, WITHOUT LIMITATION, SATISFACTORY QUALITY OR  
ACCURACY OF DIMENSIONS.



# Living Room

Width: 16' 8 1/4"  
Length: 17' 2"  
Area: 278.04 sq ft  
Perimeter: 67' 8 1/2"



5



Hung Window

- Height: 6' 4"

6



Hung Window

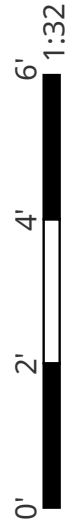
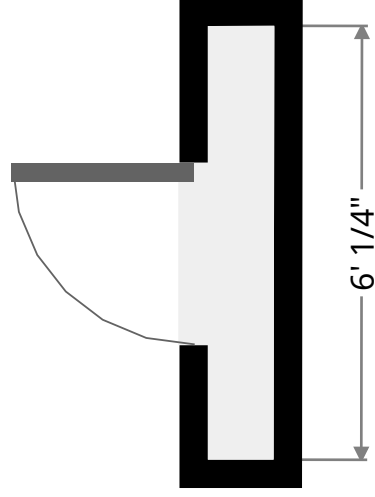
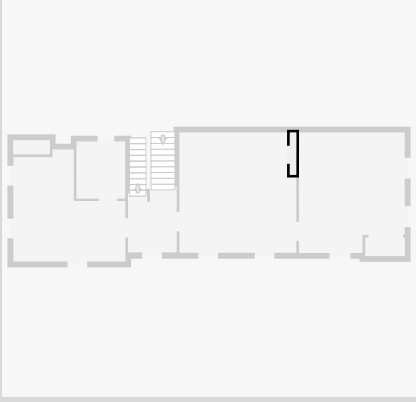
- Height: 6' 4"

THIS FLOORPLAN IS PROVIDED WITHOUT WARRANTY OF ANY KIND. NAZCA PROPERTIES  
DISCLAIMS ANY WARRANTY INCLUDING, WITHOUT LIMITATION, SATISFACTORY QUALITY OR  
ACCURACY OF DIMENSIONS.



# Closet

Width: 11"  
Length: 6' 1/4"  
Area: 5.52 sq ft  
Perimeter: 13' 10 1/2"

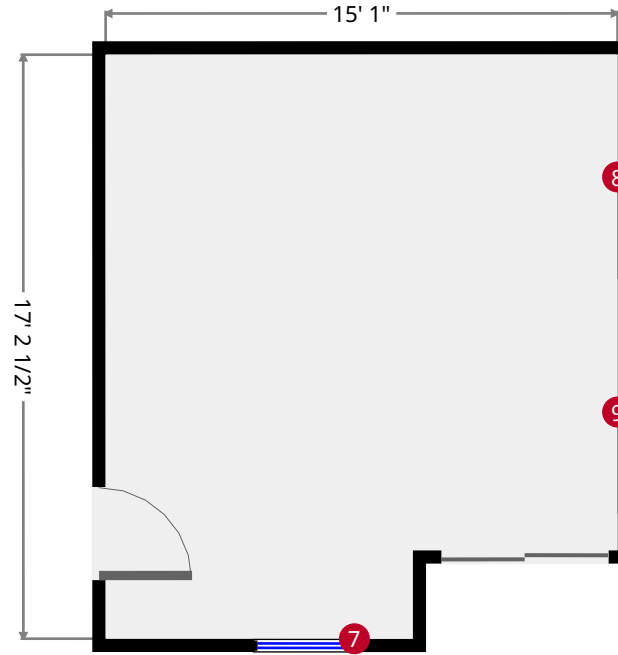
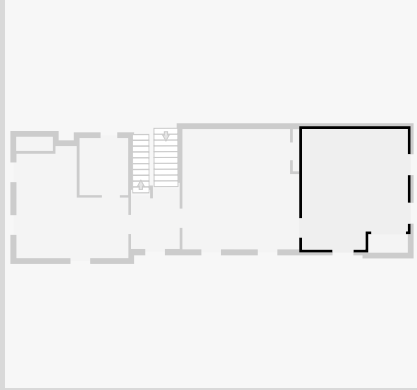


THIS FLOORPLAN IS PROVIDED WITHOUT WARRANTY OF ANY KIND. NAZCA PROPERTIES  
DISCLAIMS ANY WARRANTY INCLUDING, WITHOUT LIMITATION, SATISFACTORY QUALITY OR  
ACCURACY OF DIMENSIONS.



# Bedroom

Width: 15' 1"  
 Length: 17' 2 1/2"  
 Area: 243.98 sq ft  
 Perimeter: 64' 7 1/4"  
 Ceiling Height: 9' 10 1/2"



7



Hung Window

- Height: 6' 4 3/4"

8



Hung Window

- Height: 6' 4 3/4"

9



Hung Window

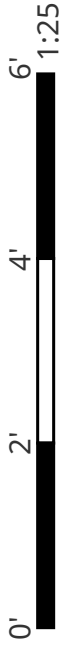
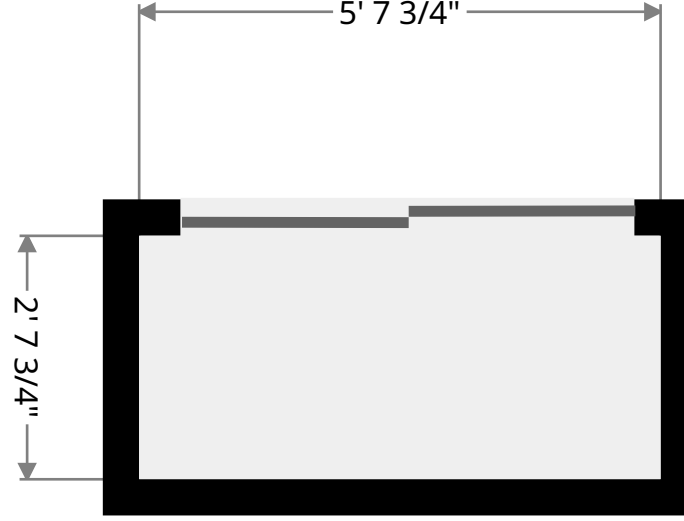
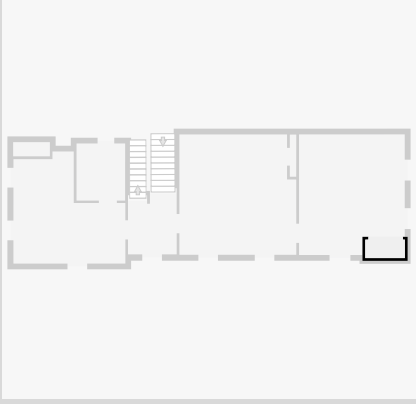
- Height: 6' 4 3/4"

THIS FLOORPLAN IS PROVIDED WITHOUT WARRANTY OF ANY KIND. NAZCA PROPERTIES  
 DISCLAIMS ANY WARRANTY INCLUDING, WITHOUT LIMITATION, SATISFACTORY QUALITY OR  
 ACCURACY OF DIMENSIONS.



# Closet

Width: 2' 7 3/4"  
Length: 5' 7 3/4"  
Area: 14.90 sq ft  
Perimeter: 16' 7"



THIS FLOORPLAN IS PROVIDED WITHOUT WARRANTY OF ANY KIND. NAZCA PROPERTIES  
DISCLAIMS ANY WARRANTY INCLUDING, WITHOUT LIMITATION, SATISFACTORY QUALITY OR  
ACCURACY OF DIMENSIONS.

# 19 W. Daniels St. Apt.2

3rd Floor



## Nazca Properties

manager@nazcaproperties.com

513-535-2154

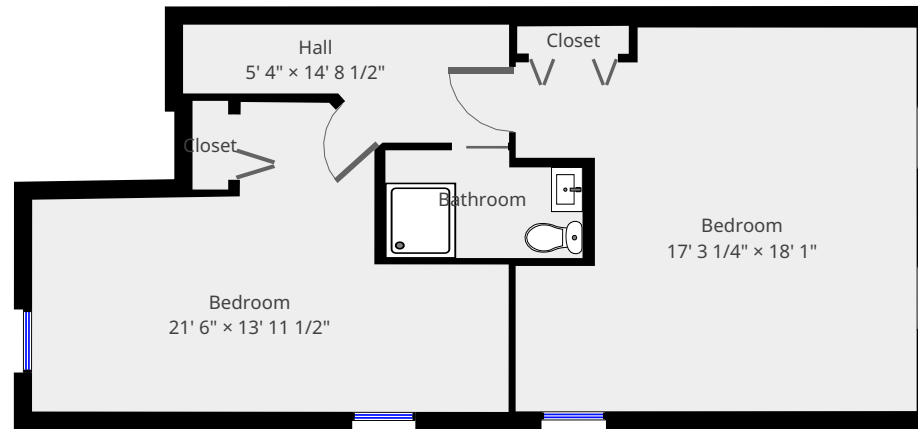
## Statistics

Area: 1538 sq ft

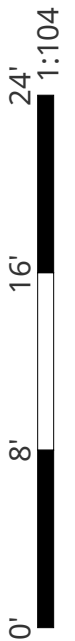
3 Floors

3 Bedrooms

2 Bathrooms

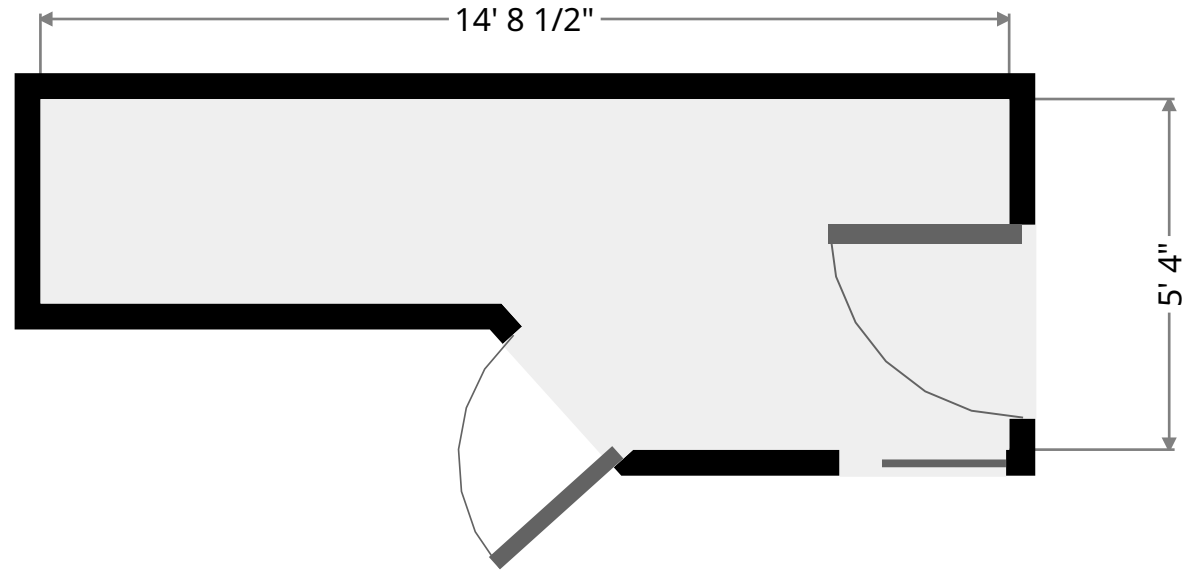
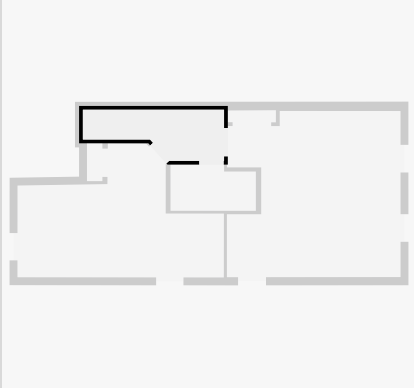


THIS FLOORPLAN IS PROVIDED WITHOUT WARRANTY OF ANY KIND. NAZCA PROPERTIES  
DISCLAIMS ANY WARRANTY INCLUDING, WITHOUT LIMITATION, SATISFACTORY QUALITY OR  
ACCURACY OF DIMENSIONS.



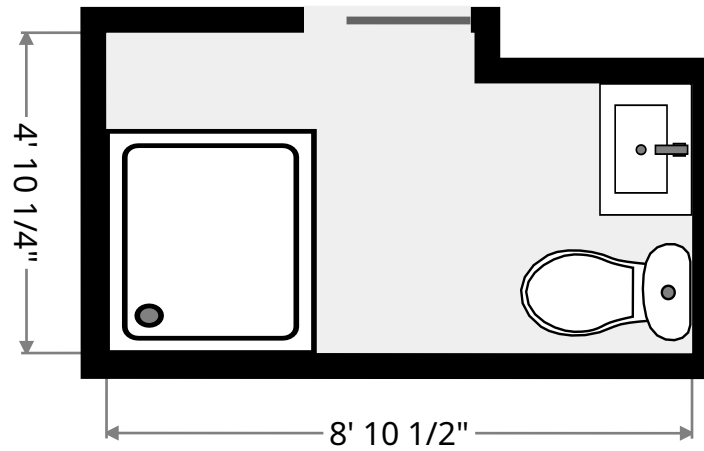
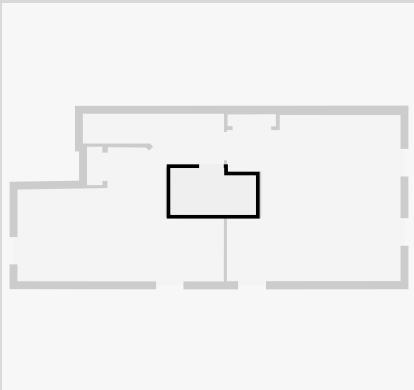
## Hall

Width: 5' 4"  
Length: 14' 8 1/2"  
Area: 60.43 sq ft  
Perimeter: 38' 9 1/2"  
Ceiling Height: 8' 5 1/2"



## Bathroom

Width: 4' 10 1/4"  
Length: 8' 10 1/2"  
Area: 40.63 sq ft  
Perimeter: 27' 5 3/4"  
Ceiling Height: 8' 6"

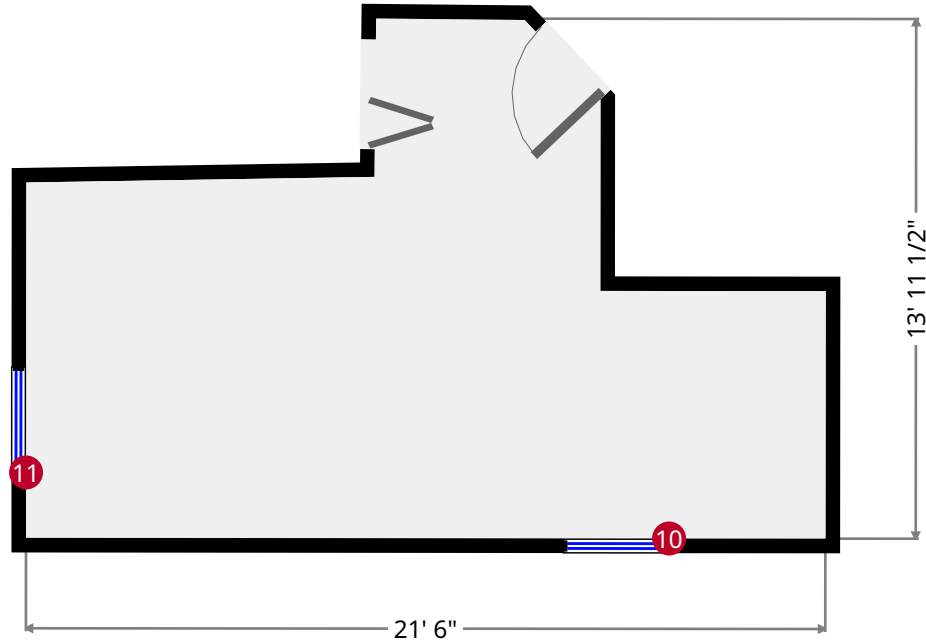
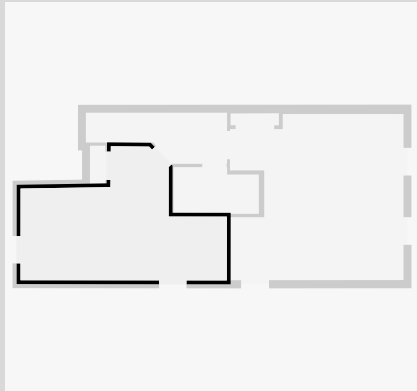


THIS FLOORPLAN IS PROVIDED WITHOUT WARRANTY OF ANY KIND. NAZCA PROPERTIES  
DISCLAIMS ANY WARRANTY INCLUDING, WITHOUT LIMITATION, SATISFACTORY QUALITY OR  
ACCURACY OF DIMENSIONS.



# Bedroom

Width: 13' 11 1/2"  
 Length: 21' 6"  
 Area: 212.68 sq ft  
 Perimeter: 69' 5 1/4"  
 Ceiling Height: 8' 3 1/2"



10



Hung Window

- Height: 4' 11 1/2"

11



Hung Window

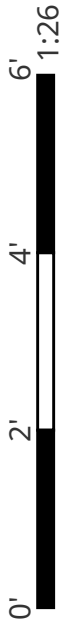
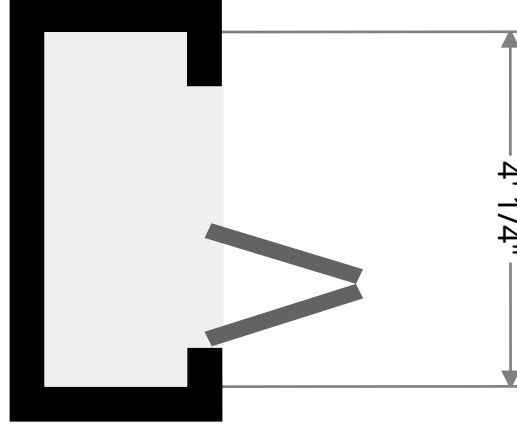
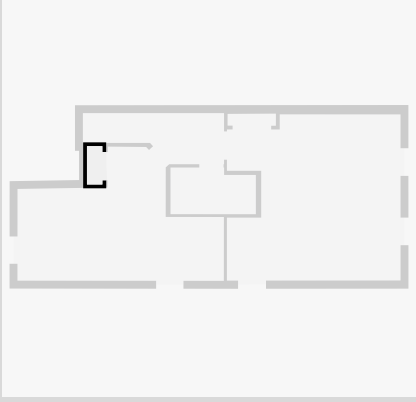
- Height: 1' 9 1/2"



THIS FLOORPLAN IS PROVIDED WITHOUT WARRANTY OF ANY KIND. NAZCA PROPERTIES  
 DISCLAIMS ANY WARRANTY INCLUDING, WITHOUT LIMITATION, SATISFACTORY QUALITY OR  
 ACCURACY OF DIMENSIONS.

# Closet

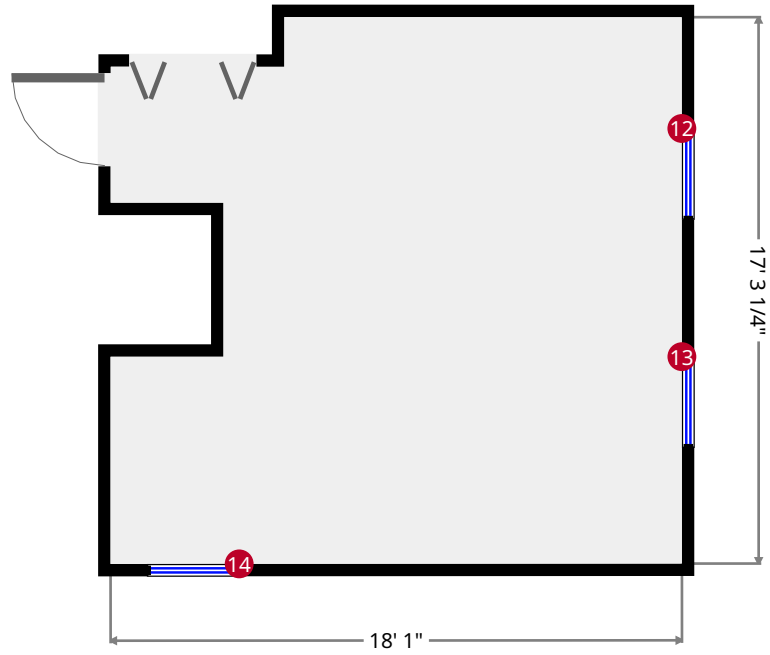
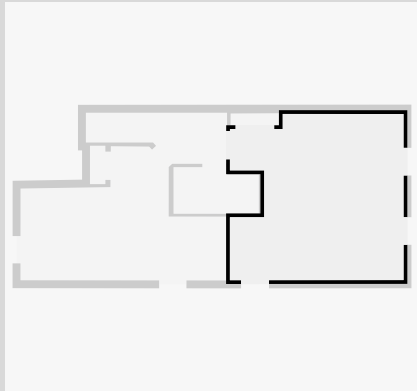
Width: 1' 7 1/4"  
Length: 4'  
Area: 6.42 sq ft  
Perimeter: 11' 2 1/2"

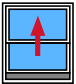



THIS FLOORPLAN IS PROVIDED WITHOUT WARRANTY OF ANY KIND. NAZCA PROPERTIES  
DISCLAIMS ANY WARRANTY INCLUDING, WITHOUT LIMITATION, SATISFACTORY QUALITY OR  
ACCURACY OF DIMENSIONS.


# Bedroom

Width: 17' 3 1/4"  
 Length: 18' 1"  
 Area: 286.57 sq ft  
 Perimeter: 77' 10 1/2"  
 Ceiling Height: 8' 1 1/2"



12  Hung Window - Height: 1' 8 1/4"

13  Hung Window - Height: 1' 8 1/4"

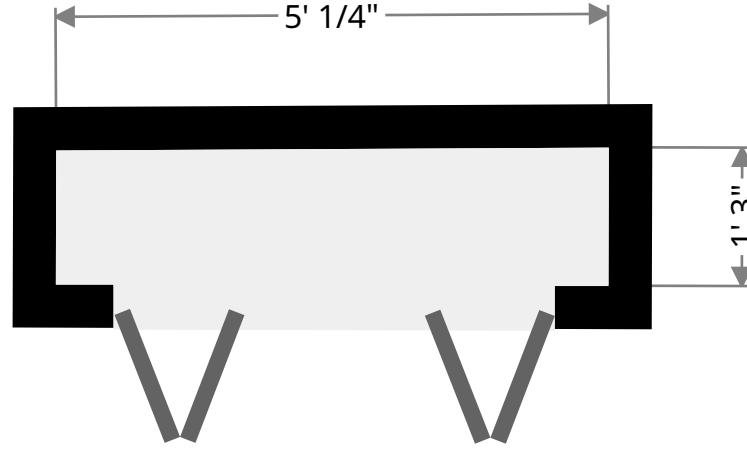
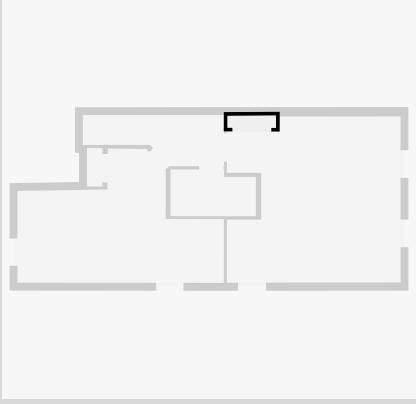
14  Hung Window - Height: 5' 1 1/4"

THIS FLOORPLAN IS PROVIDED WITHOUT WARRANTY OF ANY KIND. NAZCA PROPERTIES  
 DISCLAIMS ANY WARRANTY INCLUDING, WITHOUT LIMITATION, SATISFACTORY QUALITY OR  
 ACCURACY OF DIMENSIONS.



# Closet

Width: 1' 3"  
Length: 5' 1/4"  
Area: 6.24 sq ft  
Perimeter: 12' 6 1/2"



THIS FLOORPLAN IS PROVIDED WITHOUT WARRANTY OF ANY KIND. NAZCA PROPERTIES  
DISCLAIMS ANY WARRANTY INCLUDING, WITHOUT LIMITATION, SATISFACTORY QUALITY OR  
ACCURACY OF DIMENSIONS.