

20 W. Daniels St. Apt.2

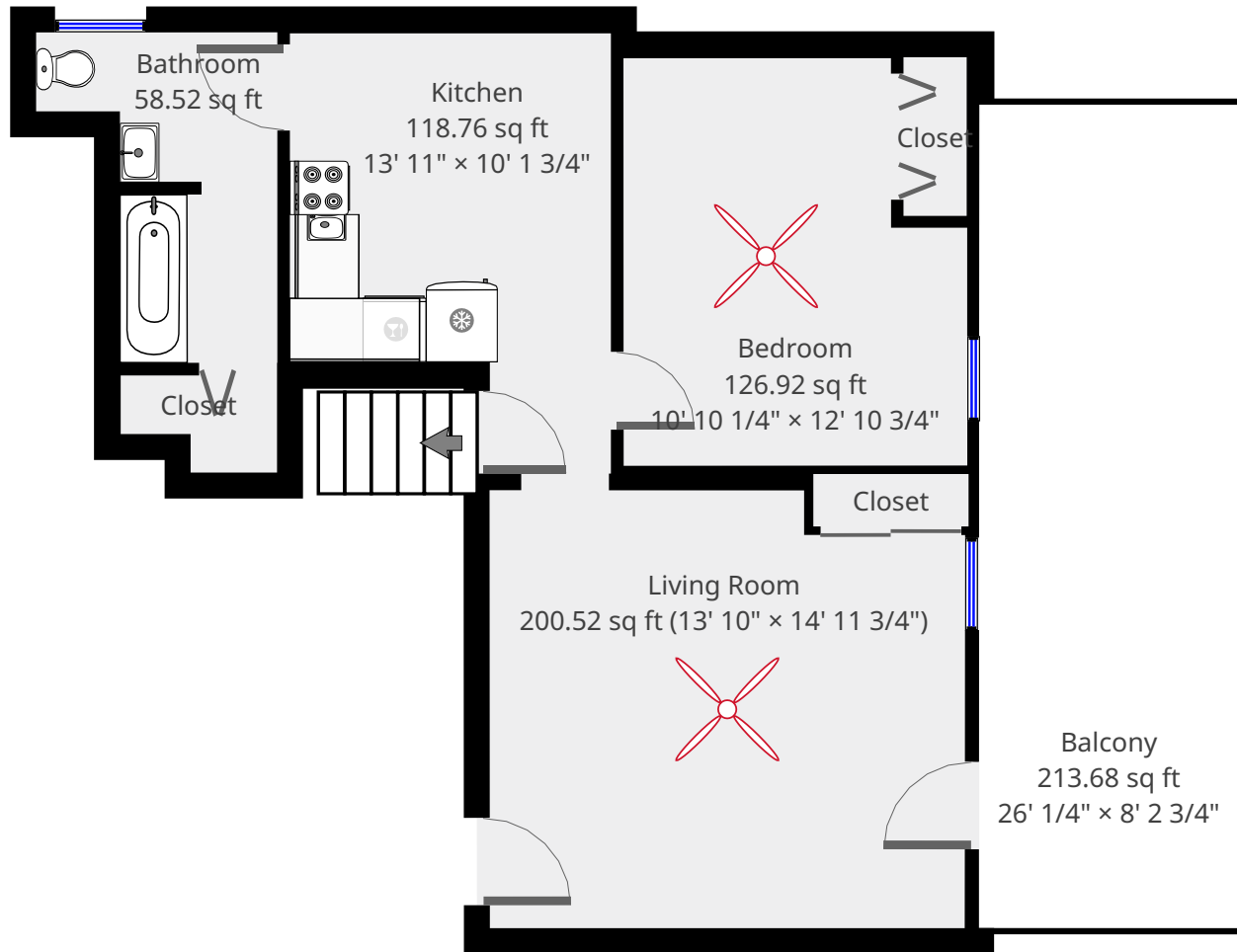
1st Floor



Nazca Properties
manager@nazcaproperties.com
513-535-2154

Statistics

Area: 792 sq ft
2 Floors
2 Bedrooms
1 Bathroom

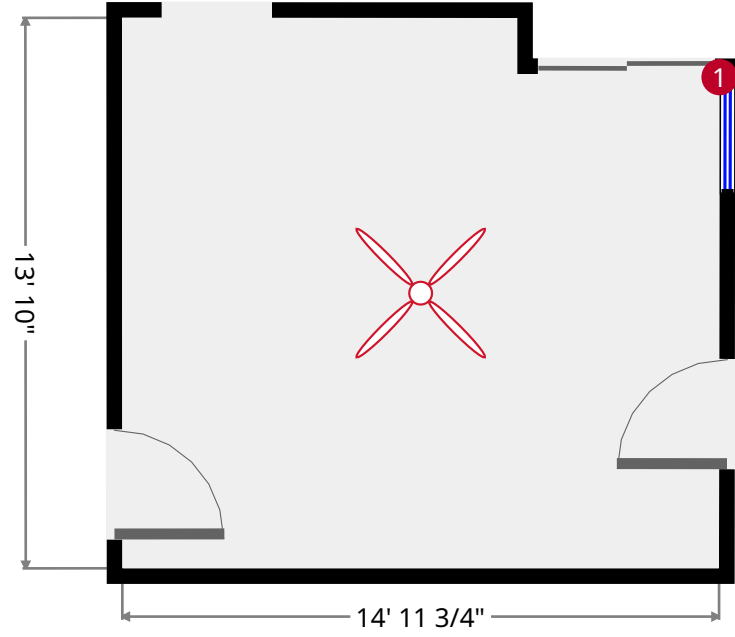
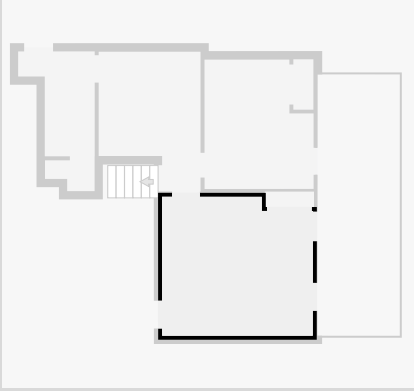


THIS FLOORPLAN IS PROVIDED WITHOUT WARRANTY OF ANY KIND. NAZCA PROPERTIES
DISCLAIMS ANY WARRANTY INCLUDING, WITHOUT LIMITATION, SATISFACTORY QUALITY OR
ACCURACY OF DIMENSIONS.



Living Room

Width: 13' 10"
Length: 14' 11 3/4"
Area: 200.52 sq ft
Perimeter: 57' 8 1/4"
Ceiling Height: 9' 4 3/4"



1



Hung Window

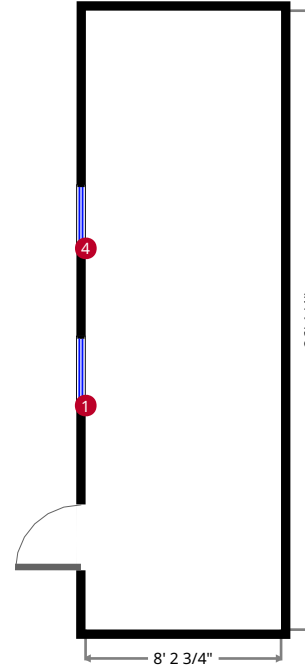
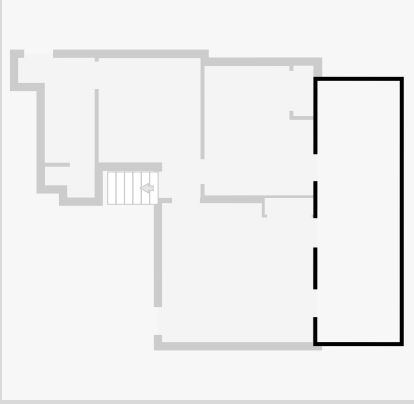
- Height: 6' 6 1/4"

THIS FLOORPLAN IS PROVIDED WITHOUT WARRANTY OF ANY KIND. NAZCA PROPERTIES
DISCLAIMS ANY WARRANTY INCLUDING, WITHOUT LIMITATION, SATISFACTORY QUALITY OR
ACCURACY OF DIMENSIONS.



Balcony

Width: 8' 2 3/4"
Length: 26' 1/4"
Area: 213.68 sq ft
Perimeter: 68' 5 1/2"



1



Hung Window

- Height: 6' 6 1/4"

4



Hung Window

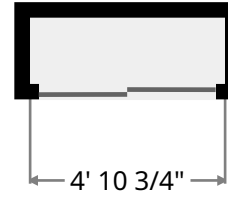
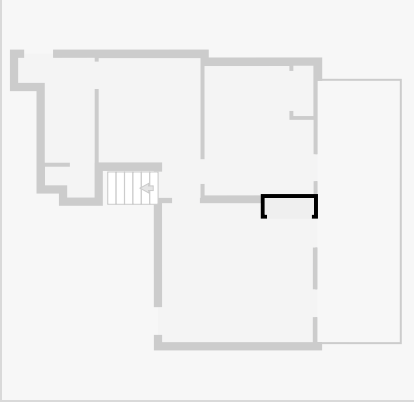
- Height: 6' 4 3/4"

THIS FLOORPLAN IS PROVIDED WITHOUT WARRANTY OF ANY KIND. NAZCA PROPERTIES
DISCLAIMS ANY WARRANTY INCLUDING, WITHOUT LIMITATION, SATISFACTORY QUALITY OR
ACCURACY OF DIMENSIONS.



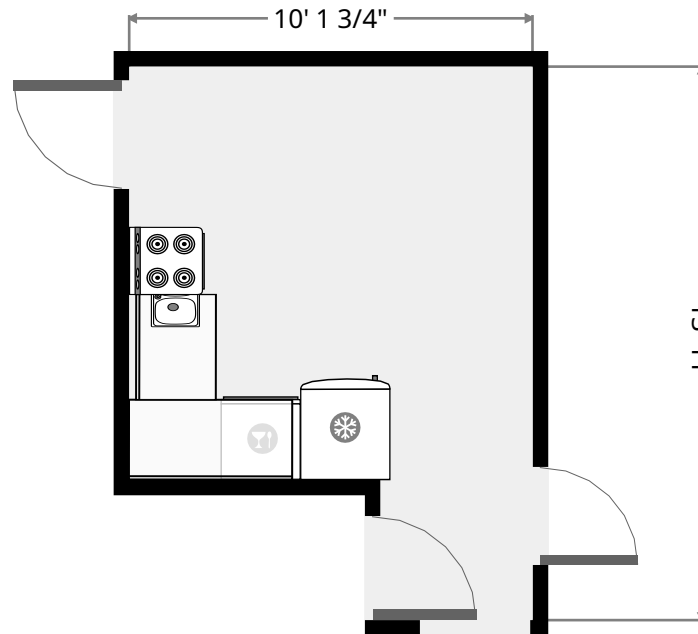
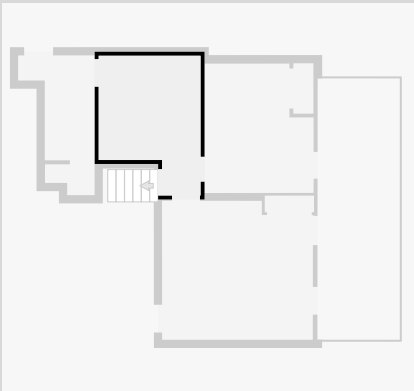
Closet

Width: 1' 8"
Length: 4' 10 3/4"
Area: 8.12 sq ft
Perimeter: 13' 1 1/2"

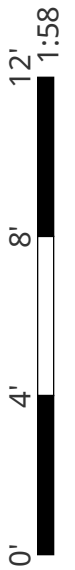


Kitchen

Width: 10' 1 3/4"
Length: 13' 11"
Area: 118.76 sq ft
Perimeter: 48' 1 1/4"
Ceiling Height: 9' 3"

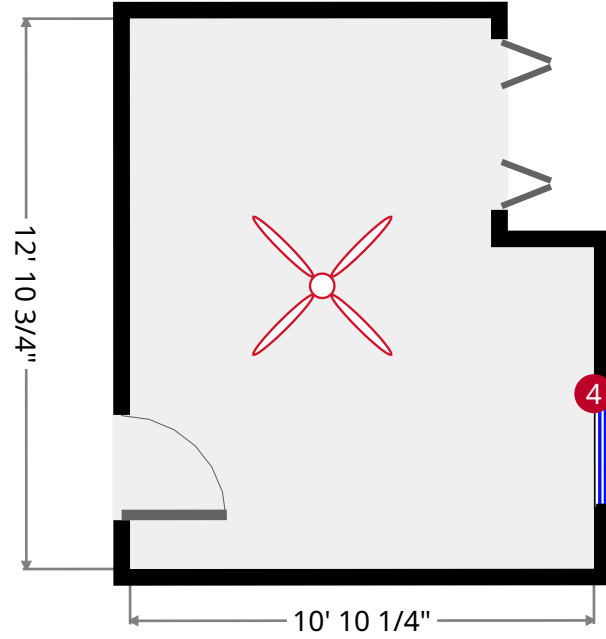
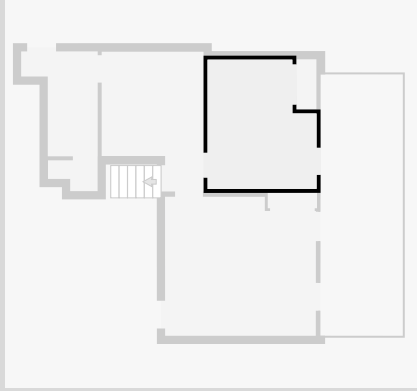


THIS FLOORPLAN IS PROVIDED WITHOUT WARRANTY OF ANY KIND. NAZCA PROPERTIES
DISCLAIMS ANY WARRANTY INCLUDING, WITHOUT LIMITATION, SATISFACTORY QUALITY OR
ACCURACY OF DIMENSIONS.



Bedroom

Width: 10' 10 1/4"
Length: 12' 10 3/4"
Area: 126.92 sq ft
Perimeter: 47' 5 1/2"
Ceiling Height: 9' 3"



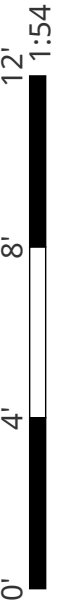
4



Hung Window

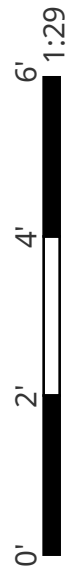
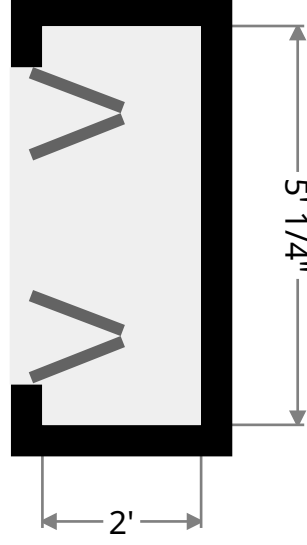
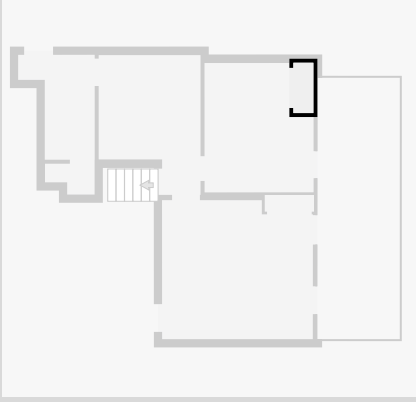
- Height: 6' 4 3/4"

THIS FLOORPLAN IS PROVIDED WITHOUT WARRANTY OF ANY KIND. NAZCA PROPERTIES
DISCLAIMS ANY WARRANTY INCLUDING, WITHOUT LIMITATION, SATISFACTORY QUALITY OR
ACCURACY OF DIMENSIONS.



Closet

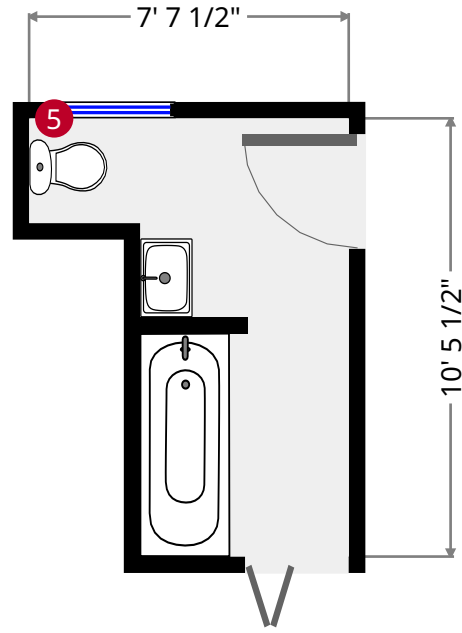
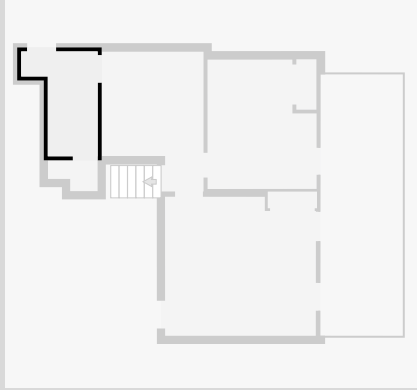
Width: 2'
Length: 5' 1/4"
Area: 10.00 sq ft
Perimeter: 14' 1/4"



THIS FLOORPLAN IS PROVIDED WITHOUT WARRANTY OF ANY KIND. NAZCA PROPERTIES
DISCLAIMS ANY WARRANTY INCLUDING, WITHOUT LIMITATION, SATISFACTORY QUALITY OR
ACCURACY OF DIMENSIONS.

Bathroom

Width: 7' 7 1/2"
Length: 10' 5 1/2"
Area: 58.52 sq ft
Perimeter: 36' 1 1/2"
Ceiling Height: 8' 7 1/4"



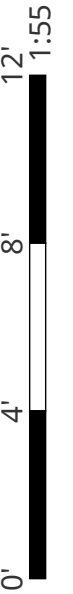
5



Hung Window

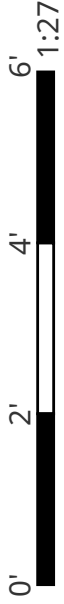
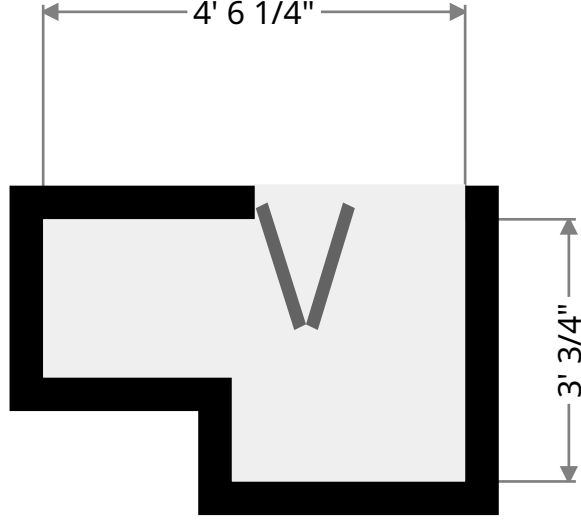
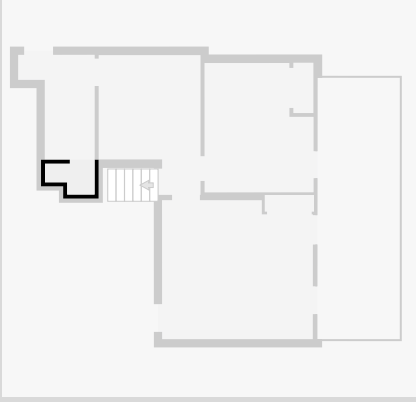
- Height: 5' 9 1/4"

THIS FLOORPLAN IS PROVIDED WITHOUT WARRANTY OF ANY KIND. NAZCA PROPERTIES
DISCLAIMS ANY WARRANTY INCLUDING, WITHOUT LIMITATION, SATISFACTORY QUALITY OR
ACCURACY OF DIMENSIONS.



Closet

Width: 3' 3/4"
Length: 4' 11 1/4"
Area: 12.46 sq ft
Perimeter: 16' 1/4"



THIS FLOORPLAN IS PROVIDED WITHOUT WARRANTY OF ANY KIND. NAZCA PROPERTIES
DISCLAIMS ANY WARRANTY INCLUDING, WITHOUT LIMITATION, SATISFACTORY QUALITY OR
ACCURACY OF DIMENSIONS.

20 W. Daniels St. Apt.2



Nazca Properties
manager@nazcaproperties.com
513-535-2154

Statistics

Area: 792 sq ft
2 Floors
2 Bedrooms
1 Bathroom

Basement

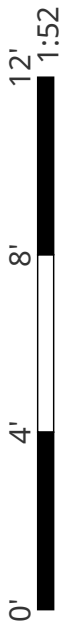
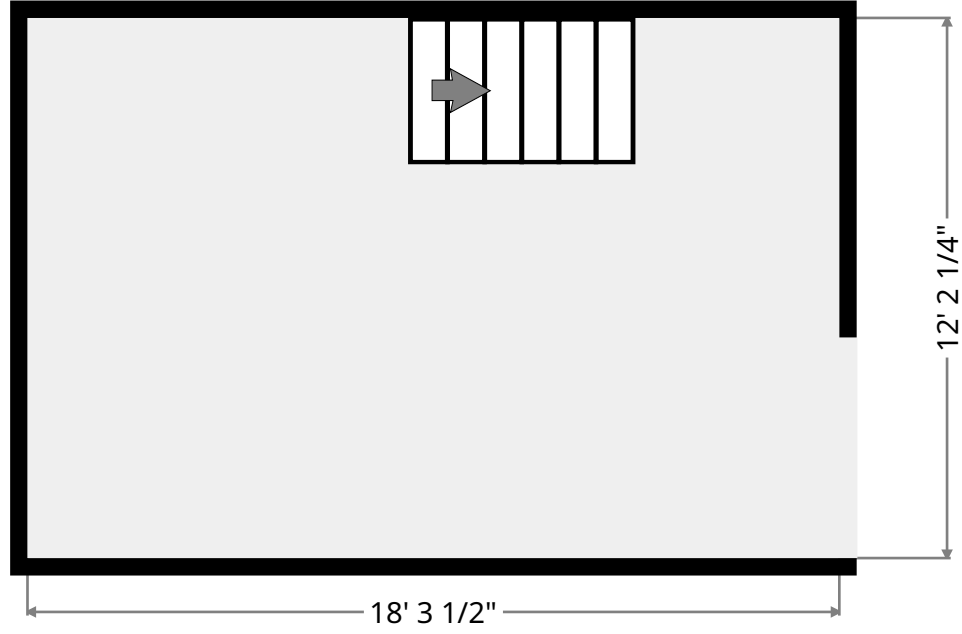
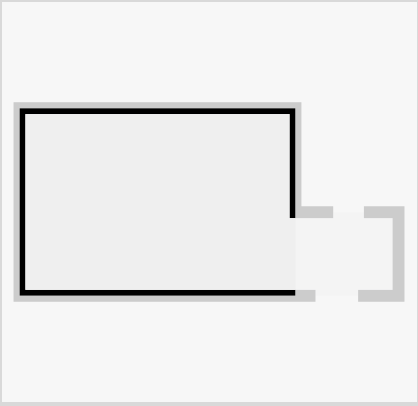


THIS FLOORPLAN IS PROVIDED WITHOUT WARRANTY OF ANY KIND. NAZCA PROPERTIES
DISCLAIMS ANY WARRANTY INCLUDING, WITHOUT LIMITATION, SATISFACTORY QUALITY OR
ACCURACY OF DIMENSIONS.



Bedroom

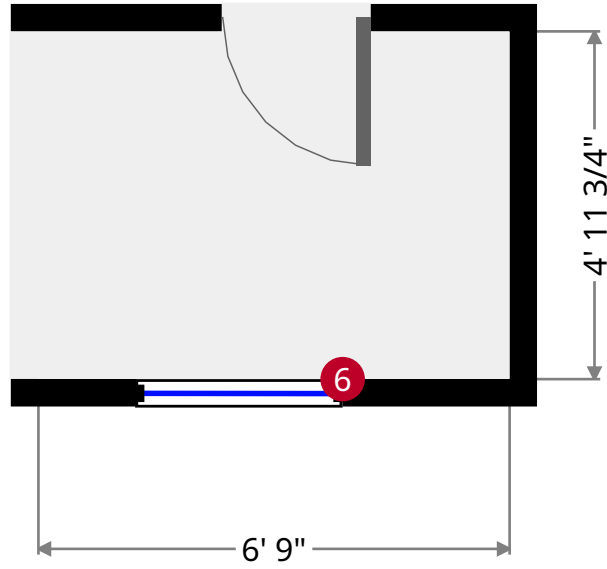
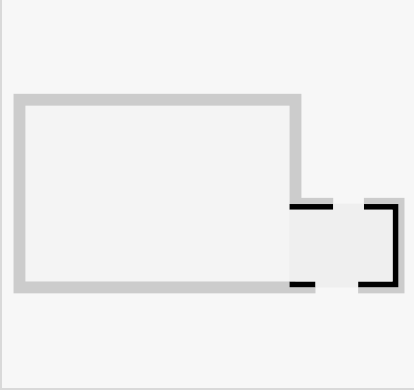
Width: 12' 2"
Length: 18' 3 1/2"
Area: 222.72 sq ft
Perimeter: 60' 11 1/4"



THIS FLOORPLAN IS PROVIDED WITHOUT WARRANTY OF ANY KIND. NAZCA PROPERTIES
DISCLAIMS ANY WARRANTY INCLUDING, WITHOUT LIMITATION, SATISFACTORY QUALITY OR
ACCURACY OF DIMENSIONS.

Closet

Width: 4' 11 3/4"
Length: 6' 9"
Area: 33.52 sq ft
Perimeter: 23' 5"
Ceiling Height: 6' 3 1/2"



6



Fixed Window

- Height: 1' 11 3/4"



THIS FLOORPLAN IS PROVIDED WITHOUT WARRANTY OF ANY KIND. NAZCA PROPERTIES
DISCLAIMS ANY WARRANTY INCLUDING, WITHOUT LIMITATION, SATISFACTORY QUALITY OR
ACCURACY OF DIMENSIONS.