



# 21 W. Daniels St. Apt. 2

Created on  
2016-07-07

<b>Total area</b> 1410.23 sq ft	<b>Floors</b> 2	<b>Rooms</b> 5	<b>Bathroom</b> 1
------------------------------------	--------------------	-------------------	----------------------

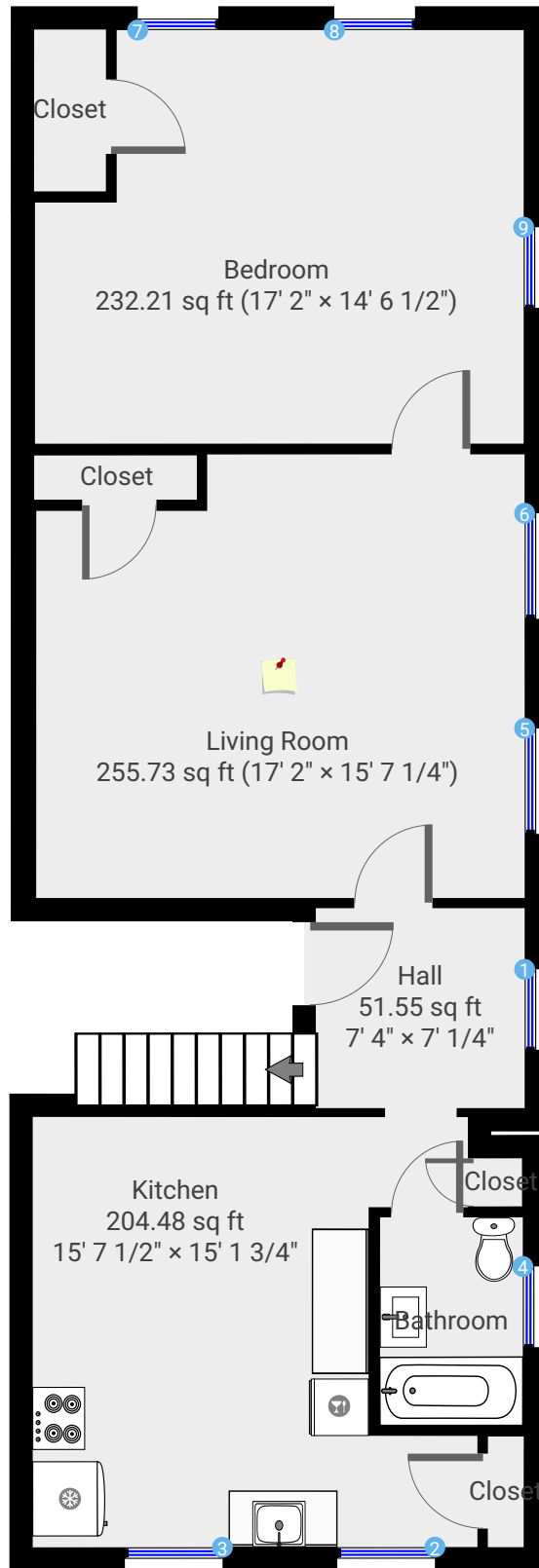
# 21 W. Daniels St. Apt. 2

TOTAL AREA: 1410.23 sq ft • LIVING AREA: 1690.62 sq ft • FLOORS: 2 • ROOMS: 5

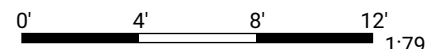


## ▼ 2nd Floor

TOTAL AREA: 810.92 sq ft • LIVING AREA: 975.43 sq ft • ROOMS: 3



THIS FLOORPLAN IS PROVIDED WITHOUT WARRANTY OF ANY KIND. NAZCA PROPERTIES DISCLAIMS ANY WARRANTY INCLUDING, WITHOUT LIMITATION, SATISFACTORY QUALITY OR ACCURACY OF DIMENSIONS.



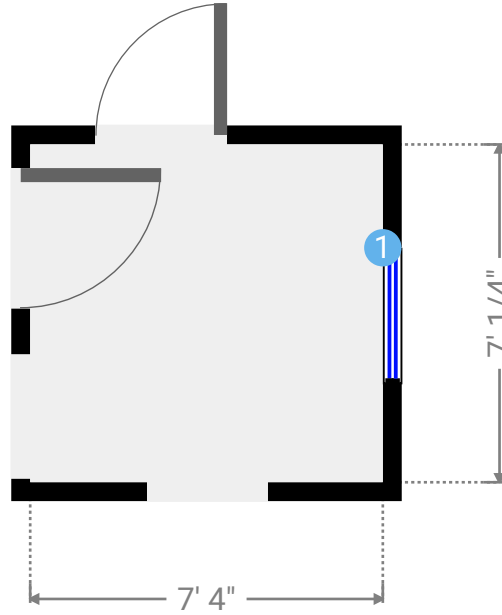
# 21 W. Daniels St. Apt. 2

TOTAL AREA: 1410.23 sq ft • LIVING AREA: 1690.62 sq ft • FLOORS: 2 • ROOMS: 5



## ▼ Hall 2nd Floor

WIDTH: 7' 4" • LENGTH: 7' 1/4" • CEILING HEIGHT: 9' 10 1/4"  
AREA: 51.55 sq ft • PERIMETER: 28' 8 3/4"



## ▼ Hall/2nd Floor

### 1 HUNG WINDOW

Height  
6' 1/4"



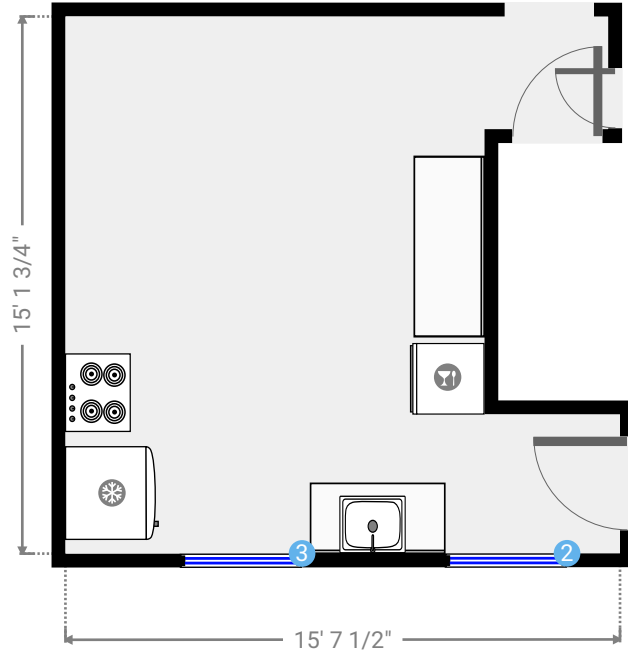
# 21 W. Daniels St. Apt. 2

TOTAL AREA: 1410.23 sq ft • LIVING AREA: 1690.62 sq ft • FLOORS: 2 • ROOMS: 5



## ▼ Kitchen 2nd Floor

WIDTH: 15' 7 1/2" • LENGTH: 15' 1 3/4" • CEILING HEIGHT: 9' 8 3/4"  
AREA: 204.48 sq ft • PERIMETER: 68' 5 1/2"



## ▼ Kitchen/2nd Floor

### 2 HUNG WINDOW

Height  
6' 1/4"



### 3 HUNG WINDOW

Height  
6' 1/4"



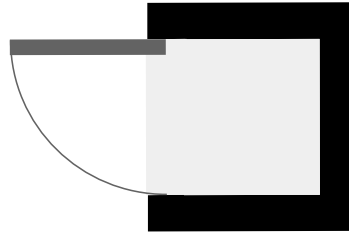
# 21 W. Daniels St. Apt. 2

TOTAL AREA: 1410.23 sq ft • LIVING AREA: 1690.62 sq ft • FLOORS: 2 • ROOMS: 5



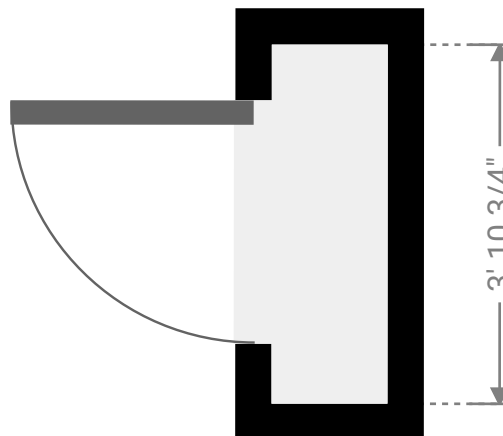
## ▼ Closet 2nd Floor

WIDTH: 1' 5 3/4" • LENGTH: 1' 8 1/4"  
AREA: 2.49 sq ft • PERIMETER: 6' 4"



## ▼ Closet 2nd Floor

WIDTH: 1' 3" • LENGTH: 3' 10 3/4"  
AREA: 4.89 sq ft • PERIMETER: 10' 3 1/2"



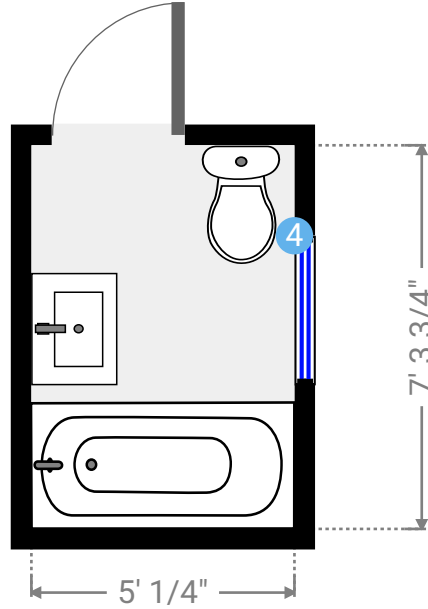
# 21 W. Daniels St. Apt. 2

TOTAL AREA: 1410.23 sq ft • LIVING AREA: 1690.62 sq ft • FLOORS: 2 • ROOMS: 5



## ▼ Bathroom 2nd Floor

WIDTH: 5' 1/4" • LENGTH: 7' 3 3/4" • CEILING HEIGHT: 9' 1 1/4"  
AREA: 36.69 sq ft • PERIMETER: 24' 8"



## ▼ Bathroom/2nd Floor

### 4 HUNG WINDOW

Height  
6'



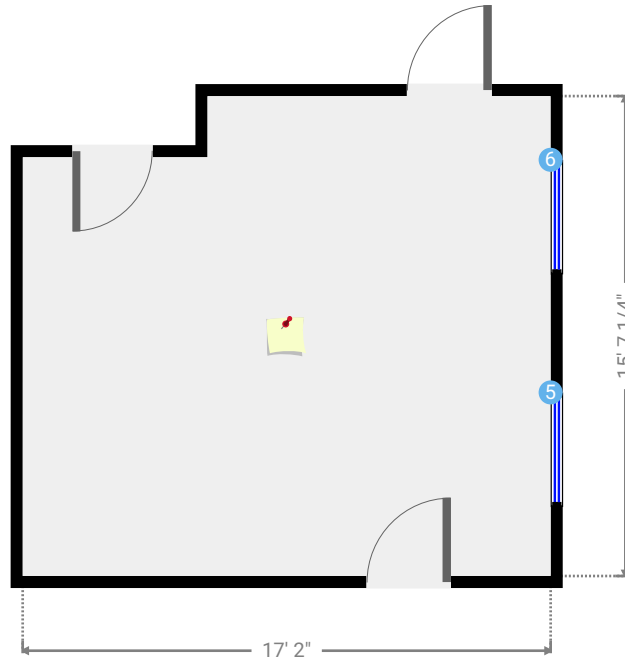
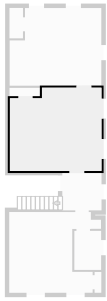
# 21 W. Daniels St. Apt. 2

TOTAL AREA: 1410.23 sq ft • LIVING AREA: 1690.62 sq ft • FLOORS: 2 • ROOMS: 5



## ▼ Living Room 2nd Floor

WIDTH: 17' 2" • LENGTH: 15' 7 1/4" • CEILING HEIGHT: 9' 10"  
AREA: 255.73 sq ft • PERIMETER: 65' 6 1/4"



## ▼ Living Room/2nd Floor

### 5 HUNG WINDOW

Height  
6'



### 6 HUNG WINDOW

Height  
6'



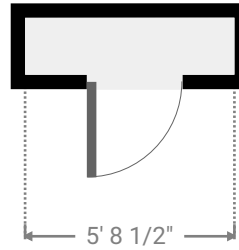
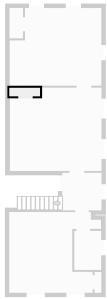
# 21 W. Daniels St. Apt. 2

TOTAL AREA: 1410.23 sq ft • LIVING AREA: 1690.62 sq ft • FLOORS: 2 • ROOMS: 5



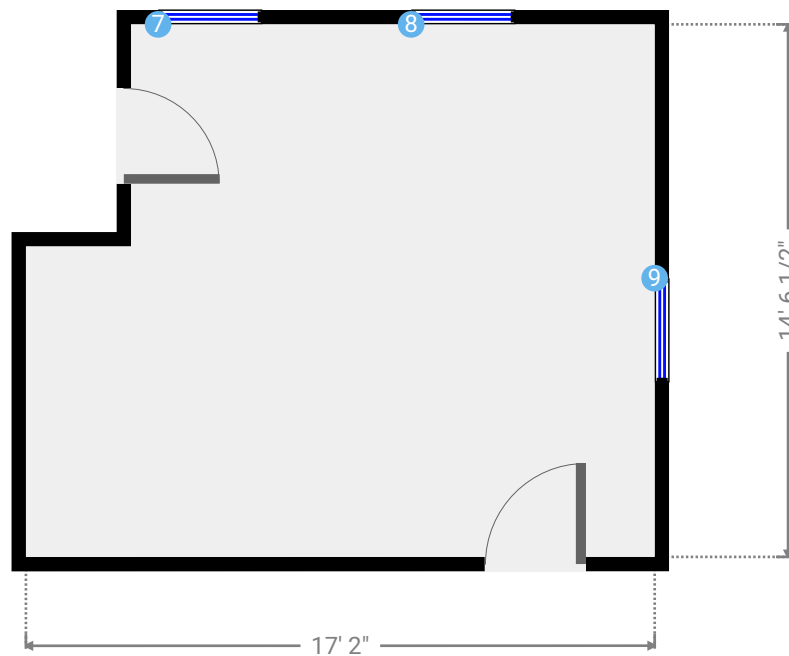
## ▼ Closet 2nd Floor

WIDTH: 5' 8 1/2" • LENGTH: 1' 6 3/4"  
AREA: 8.90 sq ft • PERIMETER: 14' 6 1/2"



## ▼ Bedroom 2nd Floor

WIDTH: 17' 2" • LENGTH: 14' 6 1/2" • CEILING HEIGHT: 9' 10 1/4"  
AREA: 232.21 sq ft • PERIMETER: 63' 5"





# 21 W. Daniels St. Apt. 2

TOTAL AREA: 1410.23 sq ft • LIVING AREA: 1690.62 sq ft • FLOORS: 2 • ROOMS: 5



## ▼ Bedroom/2nd Floor

---

**7 HUNG WINDOW**

Height  
6'



---

**8 HUNG WINDOW**

Height  
6'



---

**9 HUNG WINDOW**

Height  
6'



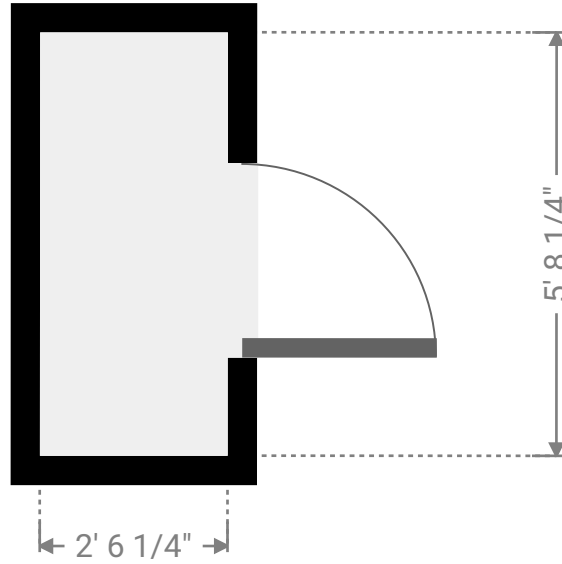
# 21 W. Daniels St. Apt. 2

TOTAL AREA: 1410.23 sq ft • LIVING AREA: 1690.62 sq ft • FLOORS: 2 • ROOMS: 5



## ▼ Closet 2nd Floor

WIDTH: 2' 6 1/4" • LENGTH: 5' 8 1/4"  
AREA: 14.35 sq ft • PERIMETER: 16' 5"



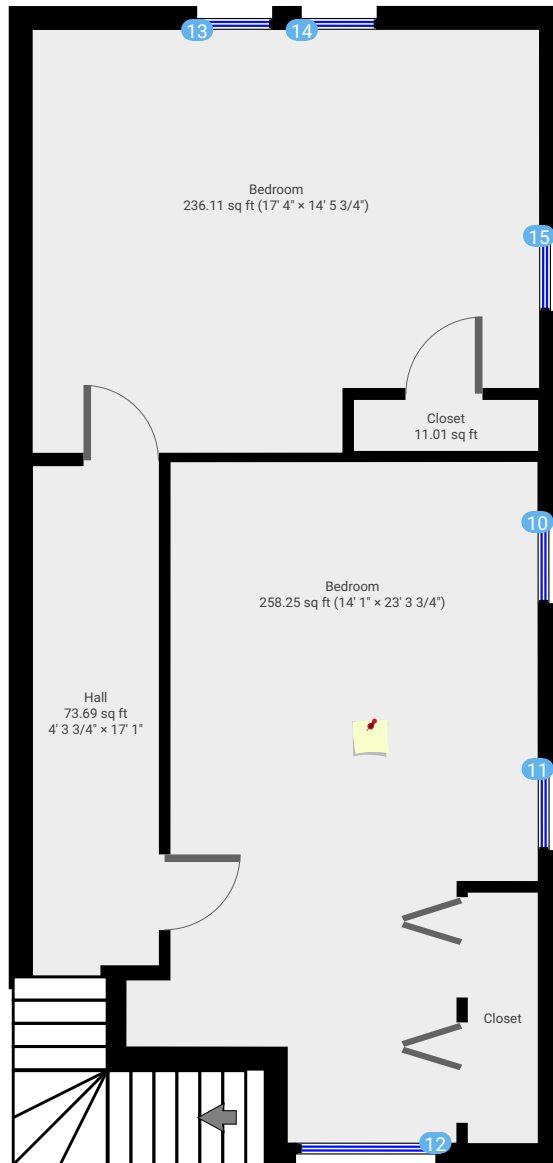
# 21 W. Daniels St. Apt. 2

TOTAL AREA: 1410.23 sq ft • LIVING AREA: 1690.62 sq ft • FLOORS: 2 • ROOMS: 5

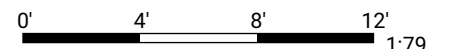


## ▼ 3rd Floor

TOTAL AREA: 599.32 sq ft • LIVING AREA: 715.18 sq ft • ROOMS: 2



THIS FLOORPLAN IS PROVIDED WITHOUT WARRANTY OF ANY KIND. NAZCA PROPERTIES DISCLAIMS ANY WARRANTY INCLUDING, WITHOUT LIMITATION, SATISFACTORY QUALITY OR ACCURACY OF DIMENSIONS.



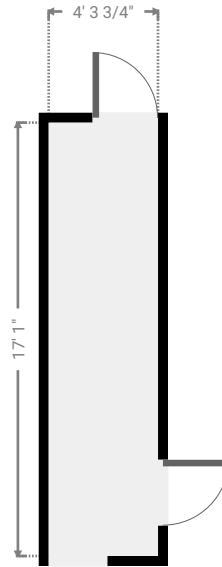
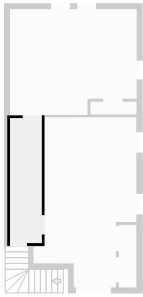
# 21 W. Daniels St. Apt. 2

TOTAL AREA: 1410.23 sq ft • LIVING AREA: 1690.62 sq ft • FLOORS: 2 • ROOMS: 5



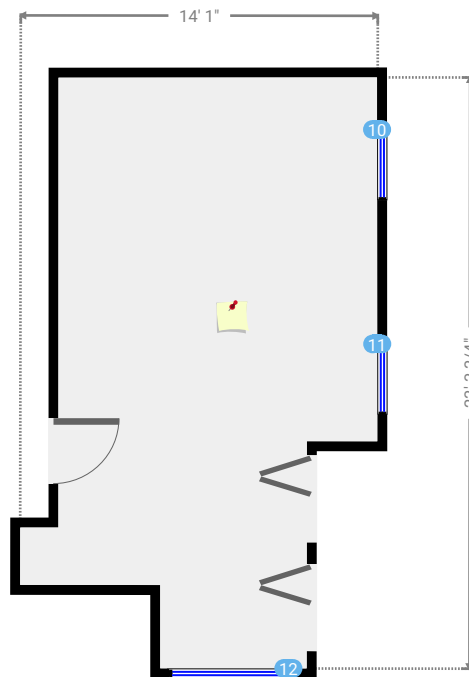
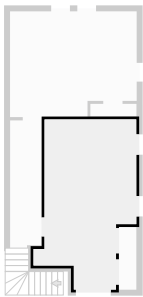
## ▼ Hall 3rd Floor

WIDTH: 4' 3 3/4" • LENGTH: 17' 1" • CEILING HEIGHT: 7' 2"  
AREA: 73.69 sq ft • PERIMETER: 42' 9 3/4"



## ▼ Bedroom 3rd Floor

WIDTH: 14' 1" • LENGTH: 23' 3 3/4" • CEILING HEIGHT: 8' 1"  
AREA: 258.25 sq ft • PERIMETER: 74' 9"



# 21 W. Daniels St. Apt. 2

TOTAL AREA: 1410.23 sq ft • LIVING AREA: 1690.62 sq ft • FLOORS: 2 • ROOMS: 5



## ▼ Bedroom/3rd Floor

---

**10 HUNG WINDOW**

Height  
4' 5"



---

**11 HUNG WINDOW**

Height  
4' 5"



---

**12 HUNG WINDOW**

Height  
4' 1"



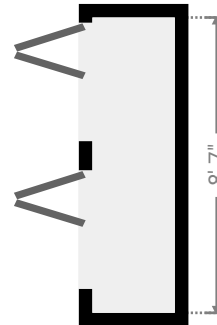
# 21 W. Daniels St. Apt. 2

TOTAL AREA: 1410.23 sq ft • LIVING AREA: 1690.62 sq ft • FLOORS: 2 • ROOMS: 5



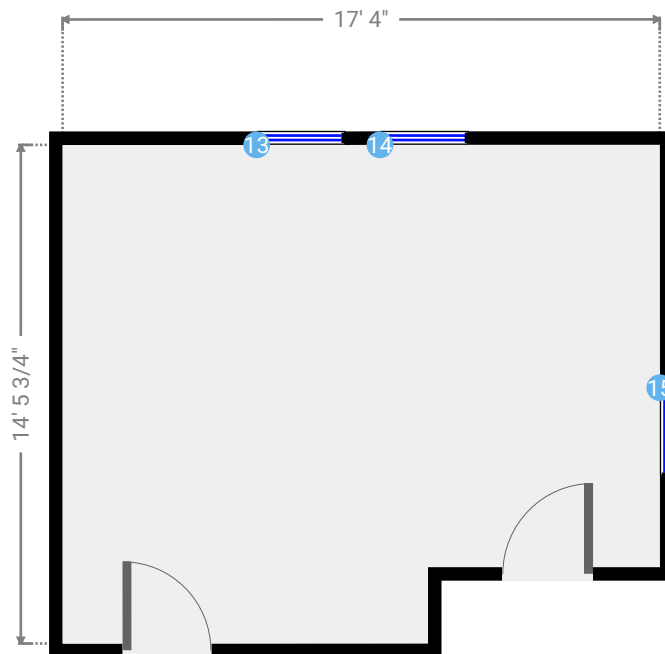
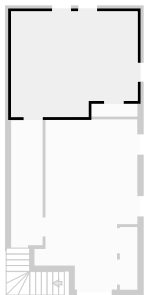
## ▼ Closet 3rd Floor

WIDTH: 2' 4 3/4" • LENGTH: 8' 7"  
AREA: 20.54 sq ft • PERIMETER: 21' 11 1/4"



## ▼ Bedroom 3rd Floor

WIDTH: 17' 4" • LENGTH: 14' 5 3/4" • CEILING HEIGHT: 8' 6 1/2"  
AREA: 236.11 sq ft • PERIMETER: 63' 7 1/2"



# 21 W. Daniels St. Apt. 2

TOTAL AREA: 1410.23 sq ft • LIVING AREA: 1690.62 sq ft • FLOORS: 2 • ROOMS: 5



## ▼ Bedroom/3rd Floor

---

**13 HUNG WINDOW**

Height  
5' 1/2"



---

**14 HUNG WINDOW**

Height  
5' 1/2"



---

**15 HUNG WINDOW**

Height  
5' 1/2"



# 21 W. Daniels St. Apt. 2

TOTAL AREA: 1410.23 sq ft • LIVING AREA: 1690.62 sq ft • FLOORS: 2 • ROOMS: 5



## ▼ Closet 3rd Floor

WIDTH: 6' 3 3/4" • LENGTH: 1' 9"  
AREA: 11.01 sq ft • PERIMETER: 16' 1 1/4"

