

2150 Ravine St.

1st Floor



**Nazca Properties**

manager@nazcaproperties.com

513-535-2154

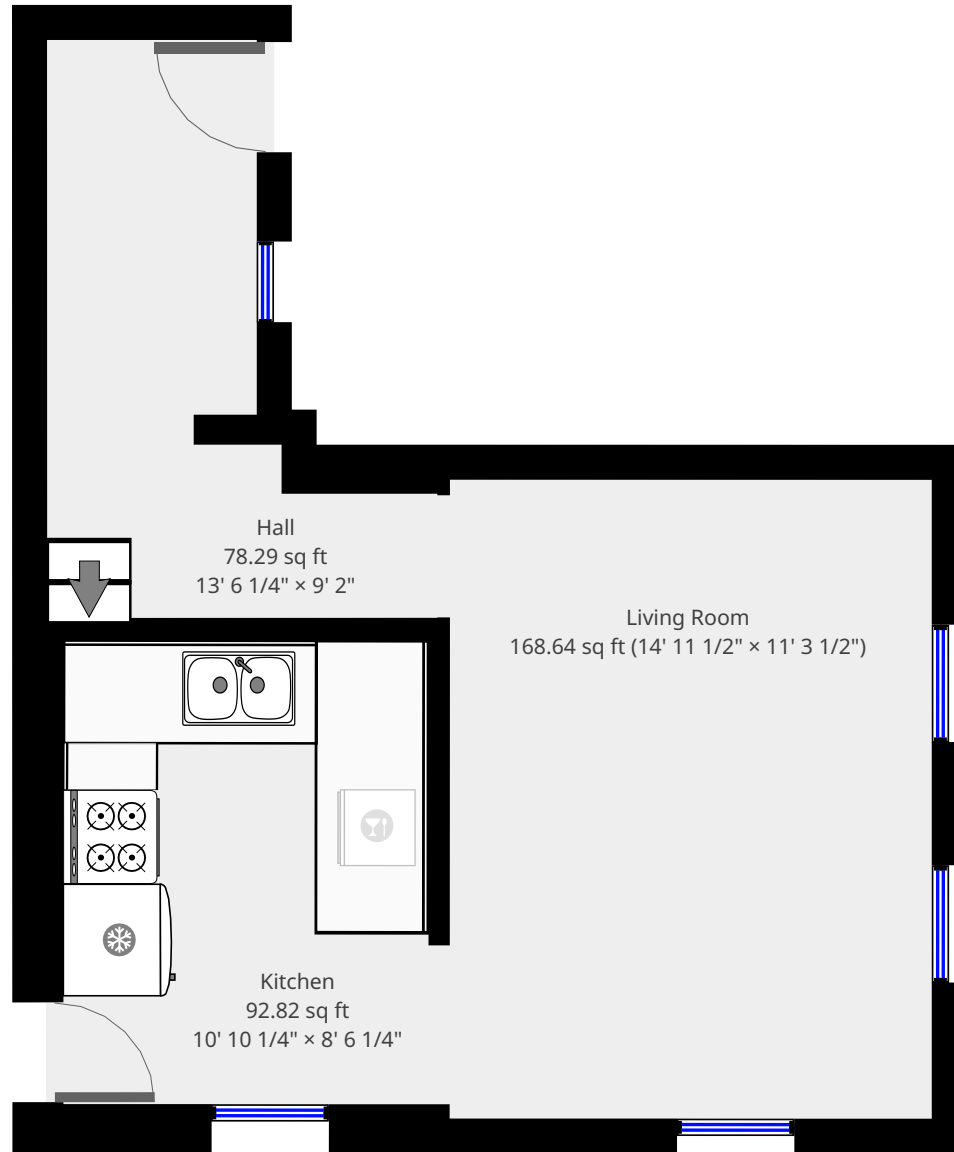
### Statistics

Area: 1146 sq ft

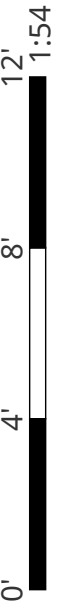
4 Floors

2 Bedrooms

2 Bathrooms

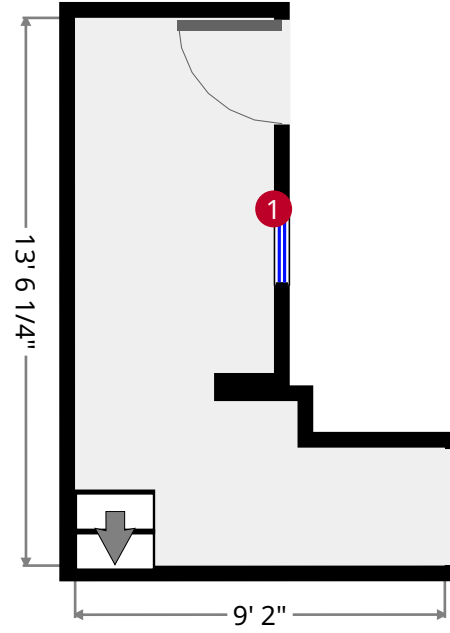
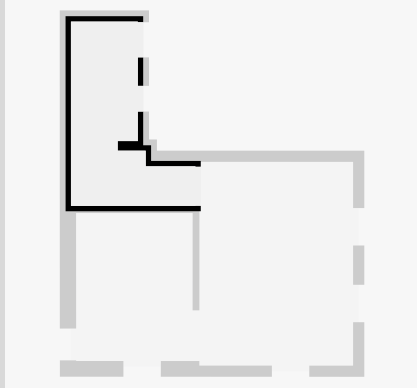


THIS FLOORPLAN IS PROVIDED WITHOUT WARRANTY OF ANY KIND. NAZCA PROPERTIES  
DISCLAIMS ANY WARRANTY INCLUDING, WITHOUT LIMITATION, SATISFACTORY QUALITY OR  
ACCURACY OF DIMENSIONS.



# Hall

Width: 9' 2"  
Length: 13' 6 1/4"  
Area: 78.29 sq ft  
Perimeter: 48' 3 1/4"  
Ceiling Height: 8' 10 3/4"



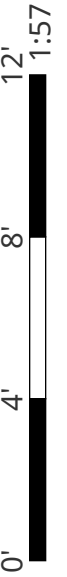
1



Hung Window

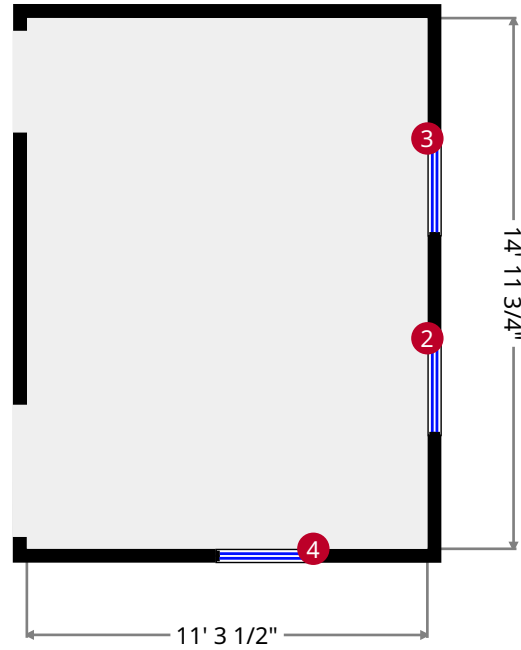
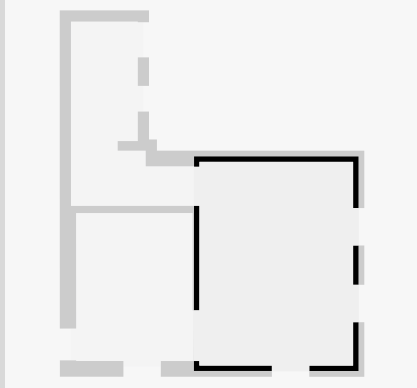
- Height: 5' 10 3/4"

THIS FLOORPLAN IS PROVIDED WITHOUT WARRANTY OF ANY KIND. NAZCA PROPERTIES  
DISCLAIMS ANY WARRANTY INCLUDING, WITHOUT LIMITATION, SATISFACTORY QUALITY OR  
ACCURACY OF DIMENSIONS.



# Living Room

Width: 11' 3 1/2"  
 Length: 14' 11 1/2"  
 Area: 168.64 sq ft  
 Perimeter: 52' 5 1/2"  
 Ceiling Height: 9' 10"



2



Hung Window

- Height: 6' 2 1/4"

3



Hung Window

- Height: 6' 2 1/4"

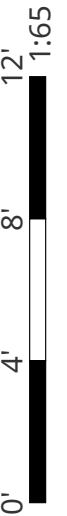
4



Hung Window

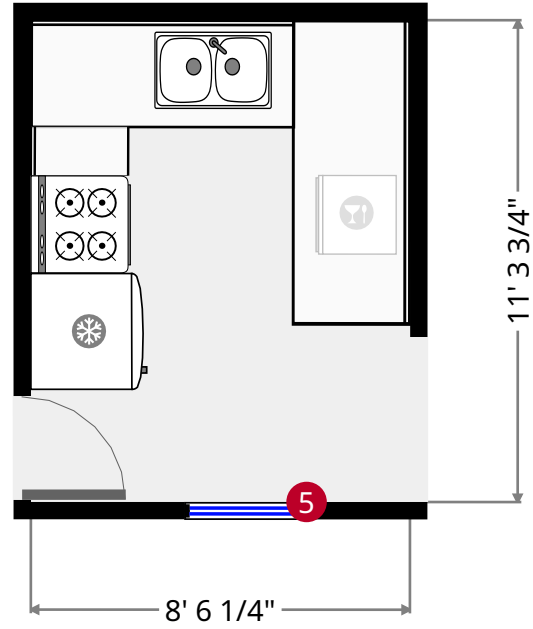
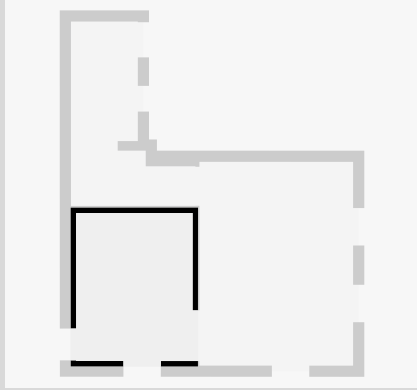
- Height: 6' 2 1/4"

THIS FLOORPLAN IS PROVIDED WITHOUT WARRANTY OF ANY KIND. NAZCA PROPERTIES  
 DISCLAIMS ANY WARRANTY INCLUDING, WITHOUT LIMITATION, SATISFACTORY QUALITY OR  
 ACCURACY OF DIMENSIONS.



# Kitchen

Width: 8' 6 1/4"  
Length: 10' 10 1/4"  
Area: 92.82 sq ft  
Perimeter: 38' 9 3/4"  
Ceiling Height: 9' 10"



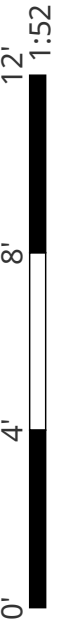
5



Hung Window

- Height: 6' 2 1/4"

THIS FLOORPLAN IS PROVIDED WITHOUT WARRANTY OF ANY KIND. NAZCA PROPERTIES  
DISCLAIMS ANY WARRANTY INCLUDING, WITHOUT LIMITATION, SATISFACTORY QUALITY OR  
ACCURACY OF DIMENSIONS.



2150 Ravine St.

2nd Floor



**Nazca Properties**

manager@nazcaproperties.com

513-535-2154

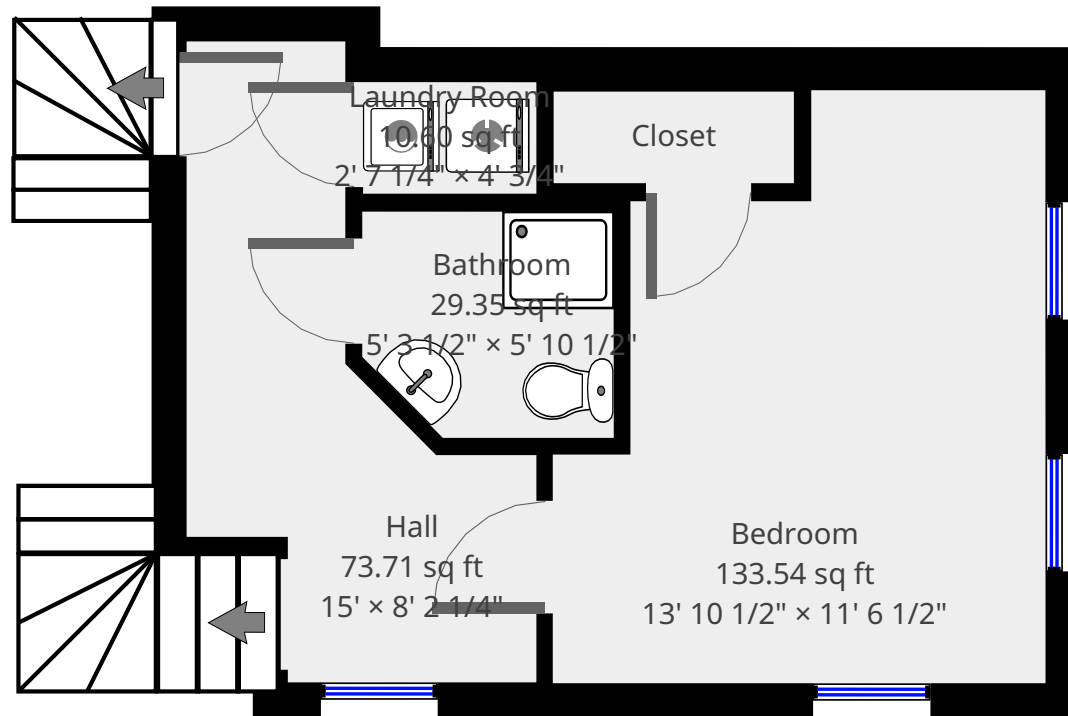
## Statistics

Area: 1146 sq ft

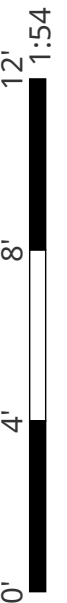
4 Floors

2 Bedrooms

2 Bathrooms

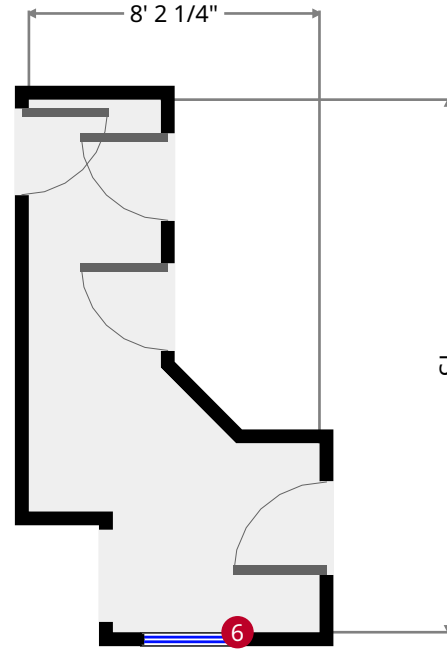
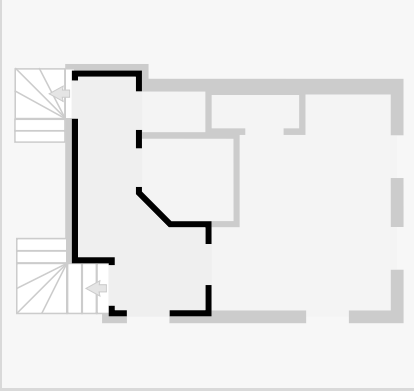


THIS FLOORPLAN IS PROVIDED WITHOUT WARRANTY OF ANY KIND. NAZCA PROPERTIES  
DISCLAIMS ANY WARRANTY INCLUDING, WITHOUT LIMITATION, SATISFACTORY QUALITY OR  
ACCURACY OF DIMENSIONS.



# Hall

Width: 8' 2 1/4"  
Length: 15'  
Area: 73.71 sq ft  
Perimeter: 45' 1 1/2"  
Ceiling Height: 9' 5 1/2"



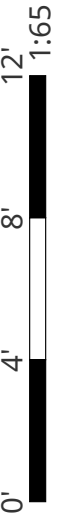
6



Hung Window

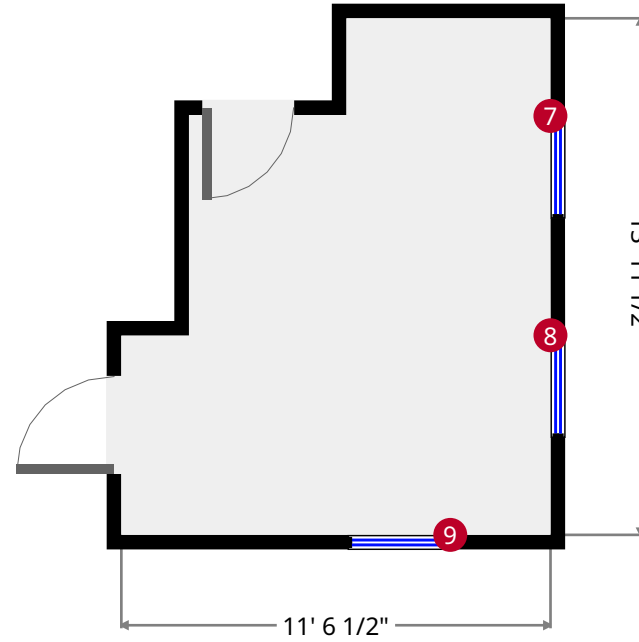
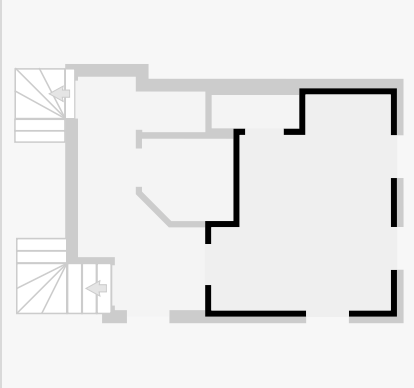
- Height: 5' 7 3/4"

THIS FLOORPLAN IS PROVIDED WITHOUT WARRANTY OF ANY KIND. NAZCA PROPERTIES  
DISCLAIMS ANY WARRANTY INCLUDING, WITHOUT LIMITATION, SATISFACTORY QUALITY OR  
ACCURACY OF DIMENSIONS.



# Bedroom

Width: 11' 6 1/2"  
 Length: 13' 10 1/2"  
 Area: 133.54 sq ft  
 Perimeter: 50' 10"  
 Ceiling Height: 9' 5 1/2"



7



Hung Window

- Height: 4' 10 3/4"

8



Hung Window

- Height: 4' 10 3/4"

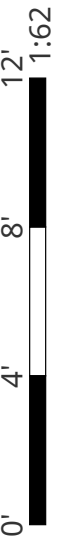
9



Hung Window

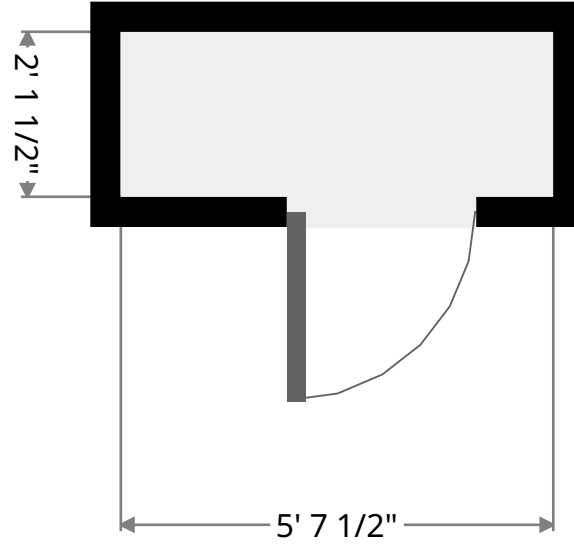
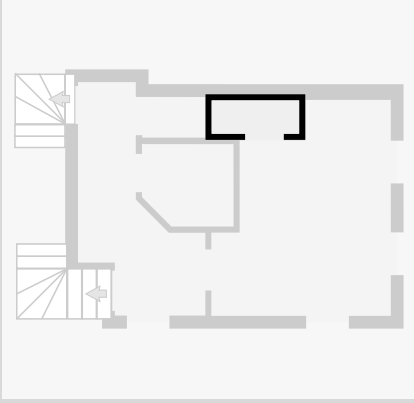
- Height: 4' 10 3/4"

THIS FLOORPLAN IS PROVIDED WITHOUT WARRANTY OF ANY KIND. NAZCA PROPERTIES  
 DISCLAIMS ANY WARRANTY INCLUDING, WITHOUT LIMITATION, SATISFACTORY QUALITY OR  
 ACCURACY OF DIMENSIONS.



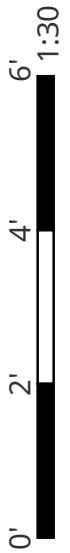
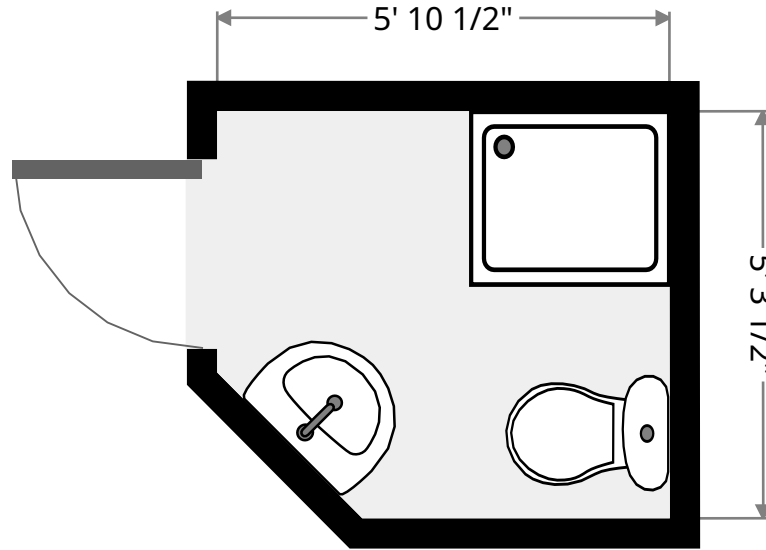
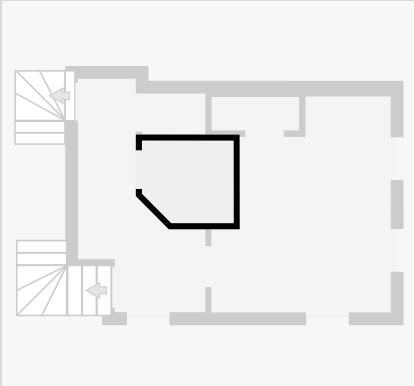
## Closet

Width: 2' 1 1/2"  
Length: 5' 7 1/2"  
Area: 12.07 sq ft  
Perimeter: 15' 6 1/2"



## Bathroom

Width: 5' 3 1/2"  
Length: 5' 10 1/2"  
Area: 29.35 sq ft  
Perimeter: 21' 3"  
Ceiling Height: 7' 1 1/4"

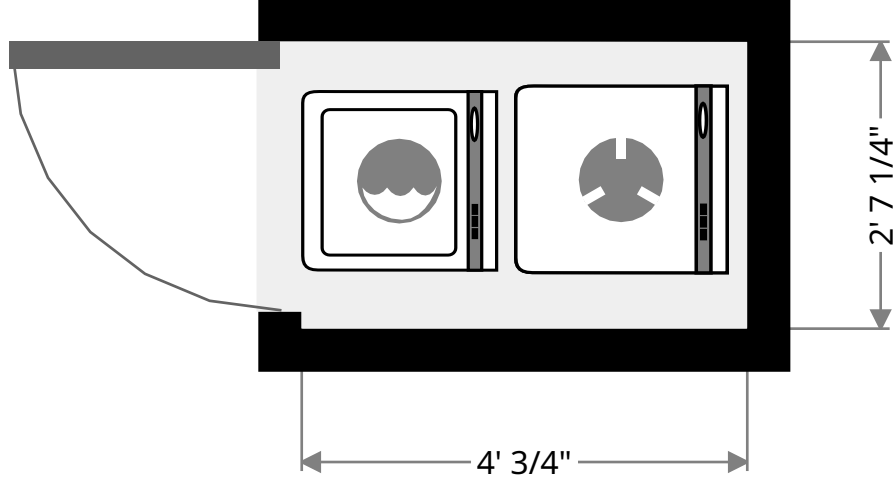
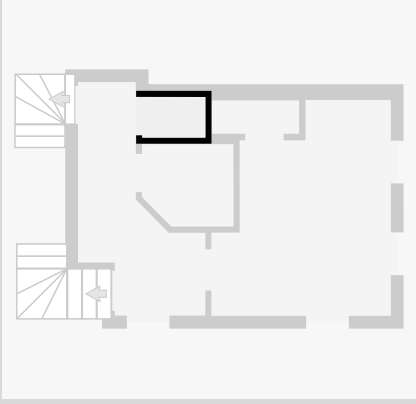


THIS FLOORPLAN IS PROVIDED WITHOUT WARRANTY OF ANY KIND. NAZCA PROPERTIES  
DISCLAIMS ANY WARRANTY INCLUDING, WITHOUT LIMITATION, SATISFACTORY QUALITY OR  
ACCURACY OF DIMENSIONS.



# Laundry Room

Width: 2' 7 1/4"  
Length: 4' 3/4"  
Area: 10.60 sq ft  
Perimeter: 13' 4"



THIS FLOORPLAN IS PROVIDED WITHOUT WARRANTY OF ANY KIND. NAZCA PROPERTIES  
DISCLAIMS ANY WARRANTY INCLUDING, WITHOUT LIMITATION, SATISFACTORY QUALITY OR  
ACCURACY OF DIMENSIONS.

2150 Ravine St.

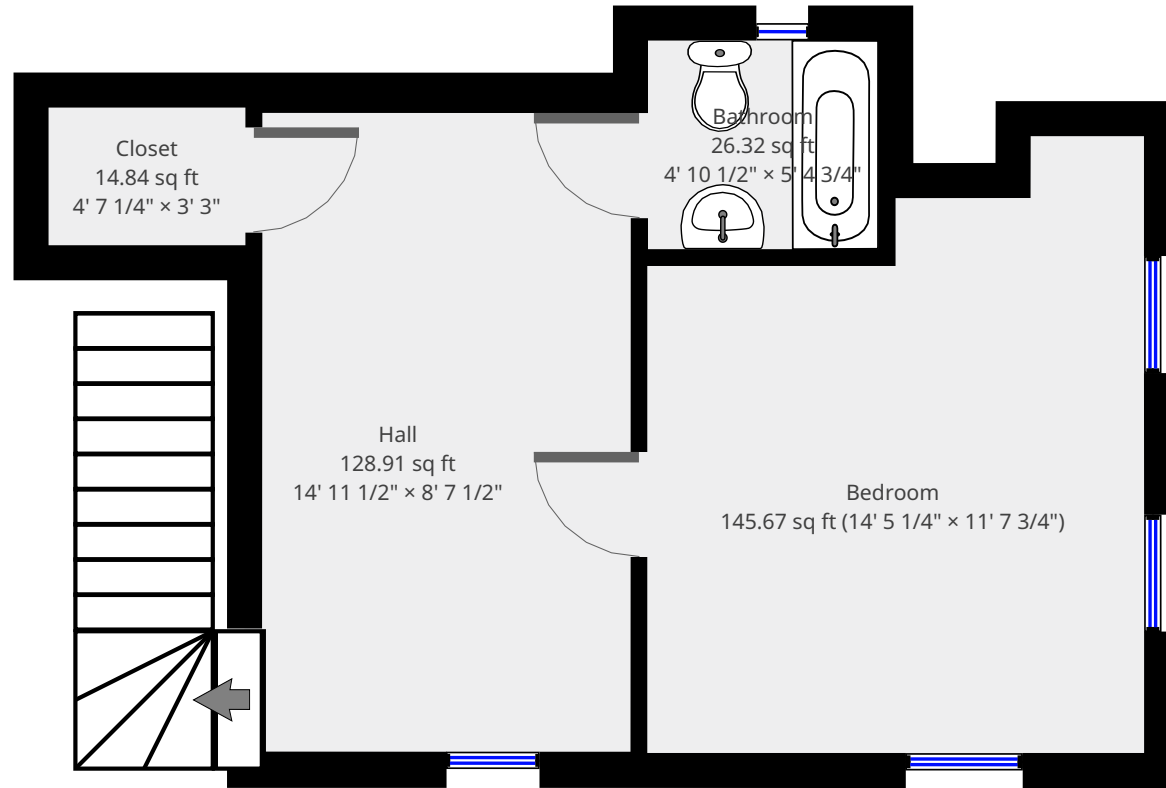
3rd Floor



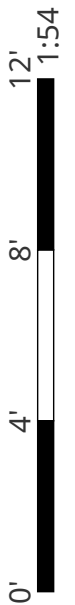
**Nazca Properties**  
manager@nazcaproperties.com  
513-535-2154

### Statistics

Area: 1146 sq ft  
4 Floors  
2 Bedrooms  
2 Bathrooms

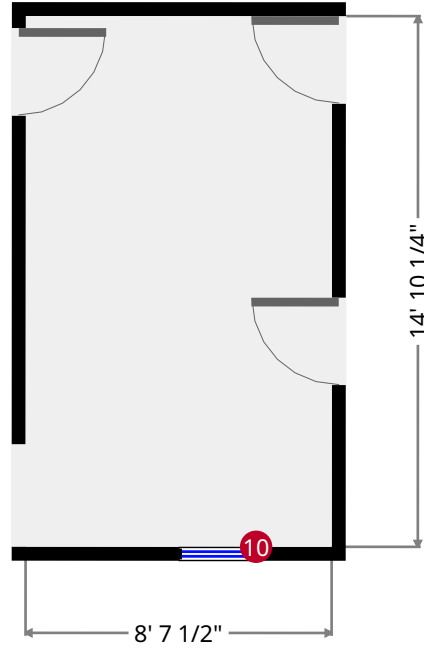
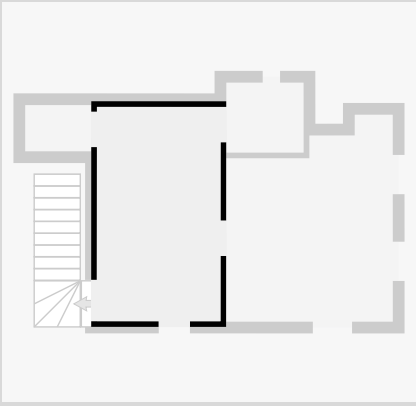


THIS FLOORPLAN IS PROVIDED WITHOUT WARRANTY OF ANY KIND. NAZCA PROPERTIES  
DISCLAIMS ANY WARRANTY INCLUDING, WITHOUT LIMITATION, SATISFACTORY QUALITY OR  
ACCURACY OF DIMENSIONS.



# Hall

Width: 8' 7 1/2"  
Length: 14' 11 1/2"  
Area: 128.91 sq ft  
Perimeter: 47' 1 3/4"



10



Hung Window

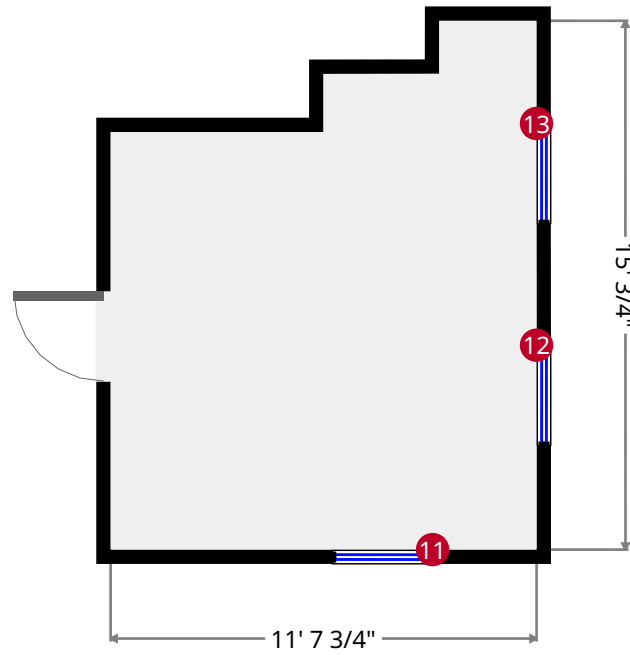
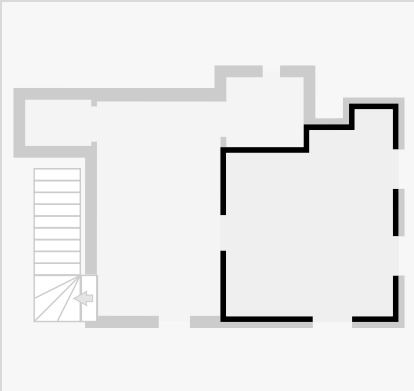
- Height: 4' 5 1/4"

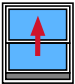
THIS FLOORPLAN IS PROVIDED WITHOUT WARRANTY OF ANY KIND. NAZCA PROPERTIES  
DISCLAIMS ANY WARRANTY INCLUDING, WITHOUT LIMITATION, SATISFACTORY QUALITY OR  
ACCURACY OF DIMENSIONS.





# Bedroom

Width: 11' 7 3/4"  
 Length: 14' 5 1/4"  
 Area: 145.67 sq ft  
 Perimeter: 52' 1 1/2"  
 Ceiling Height: 7' 8 3/4"

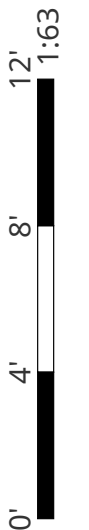


11  Hung Window - Height: 4' 4 3/4"

12  Hung Window - Height: 4' 4 3/4"

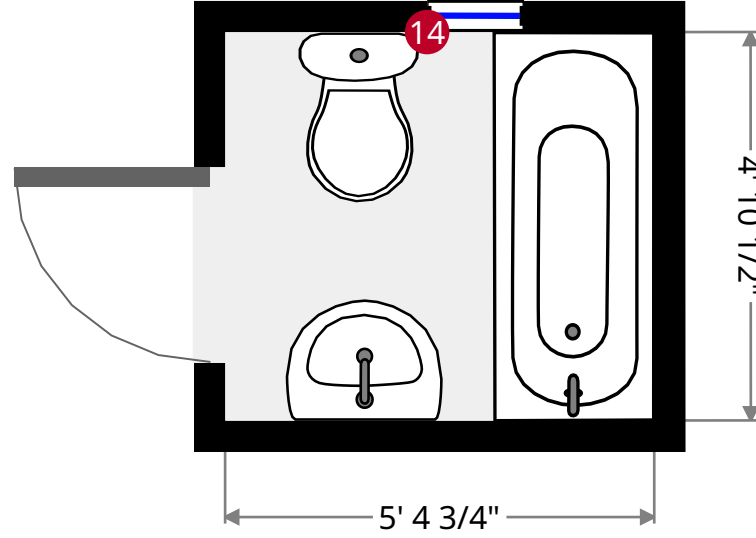
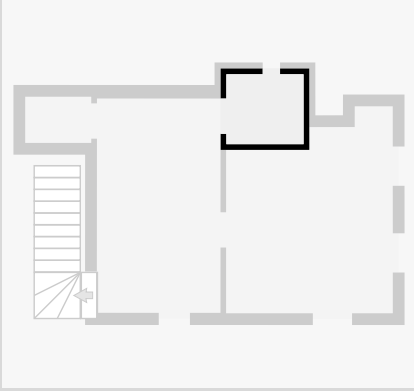
13  Hung Window - Height: 4' 4 3/4"

THIS FLOORPLAN IS PROVIDED WITHOUT WARRANTY OF ANY KIND. NAZCA PROPERTIES  
 DISCLAIMS ANY WARRANTY INCLUDING, WITHOUT LIMITATION, SATISFACTORY QUALITY OR  
 ACCURACY OF DIMENSIONS.



# Bathroom

Width: 4' 10 1/2"  
Length: 5' 4 3/4"  
Area: 26.32 sq ft  
Perimeter: 20' 6 1/2"  
Ceiling Height: 7' 10 1/2"



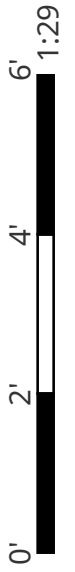
14



Fixed Window

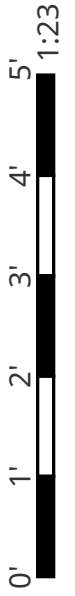
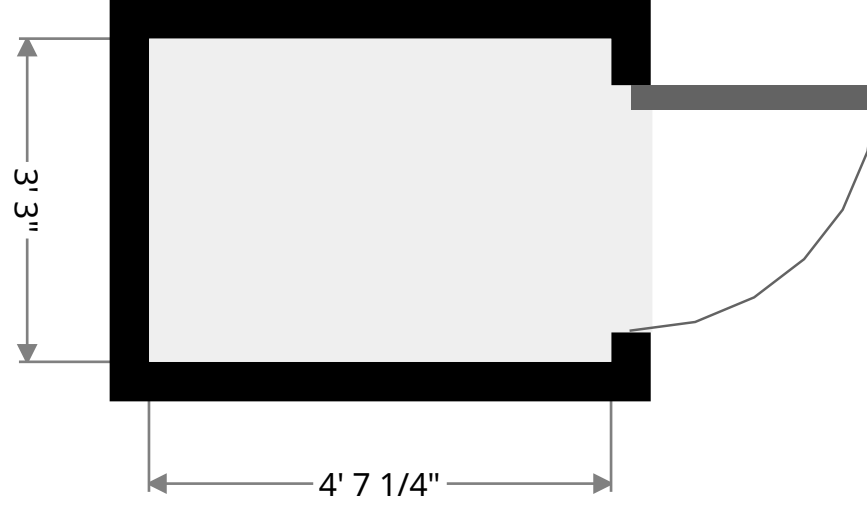
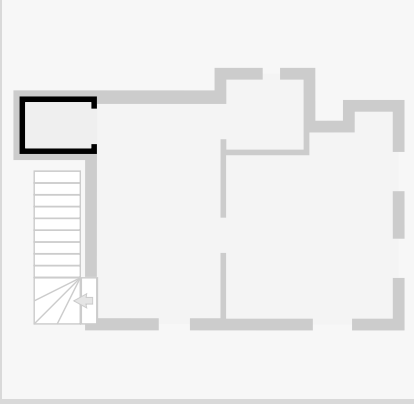
- Height: 1' 6"

THIS FLOORPLAN IS PROVIDED WITHOUT WARRANTY OF ANY KIND. NAZCA PROPERTIES  
DISCLAIMS ANY WARRANTY INCLUDING, WITHOUT LIMITATION, SATISFACTORY QUALITY OR  
ACCURACY OF DIMENSIONS.



# Closet

Width: 3' 3"  
Length: 4' 7 1/4"  
Area: 14.84 sq ft  
Perimeter: 15' 7 3/4"



THIS FLOORPLAN IS PROVIDED WITHOUT WARRANTY OF ANY KIND. NAZCA PROPERTIES  
DISCLAIMS ANY WARRANTY INCLUDING, WITHOUT LIMITATION, SATISFACTORY QUALITY OR  
ACCURACY OF DIMENSIONS.

2150 Ravine St.

Basement



**Nazca Properties**

manager@nazcaproperties.com

513-535-2154

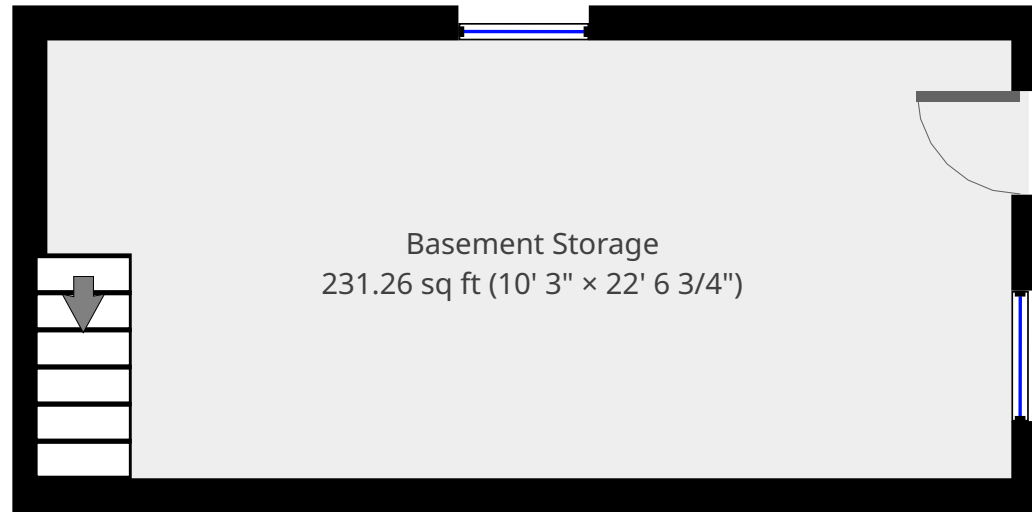
**Statistics**

Area: 1146 sq ft

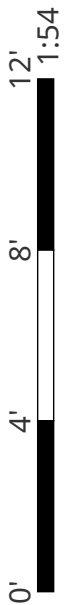
4 Floors

2 Bedrooms

2 Bathrooms

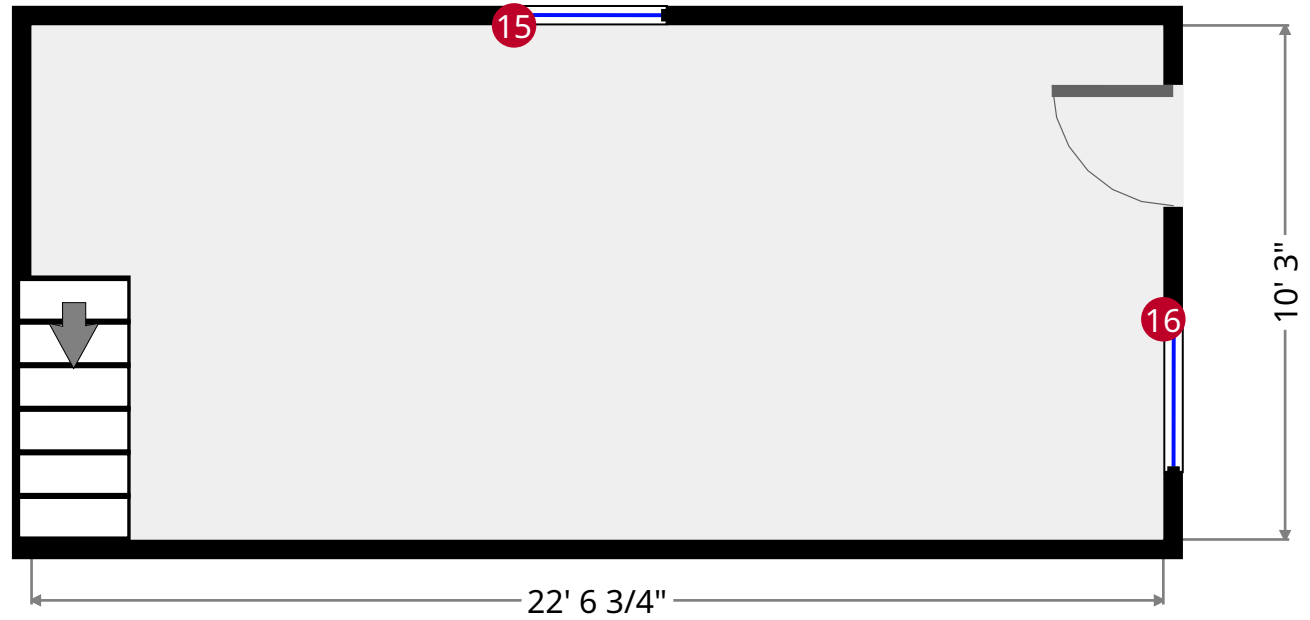
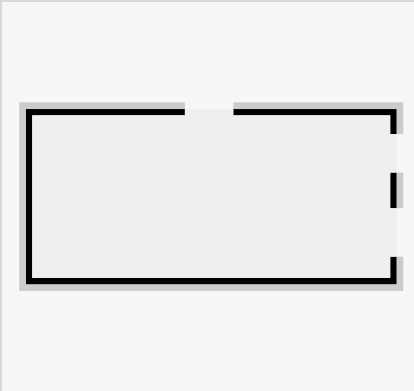


THIS FLOORPLAN IS PROVIDED WITHOUT WARRANTY OF ANY KIND. NAZCA PROPERTIES  
DISCLAIMS ANY WARRANTY INCLUDING, WITHOUT LIMITATION, SATISFACTORY QUALITY OR  
ACCURACY OF DIMENSIONS.



# Basement Storage

Width: 10' 3"  
 Length: 22' 6 3/4"  
 Area: 231.26 sq ft  
 Perimeter: 65' 7 1/2"  
 Ceiling Height: 7' 5 1/2"



15



Fixed Window

- Height: 2' 6 1/4"

16



Fixed Window

- Height: 2' 6 1/4"

THIS FLOORPLAN IS PROVIDED WITHOUT WARRANTY OF ANY KIND. NAZCA PROPERTIES  
 DISCLAIMS ANY WARRANTY INCLUDING, WITHOUT LIMITATION, SATISFACTORY QUALITY OR  
 ACCURACY OF DIMENSIONS.

