

# 227 Renner St. Apt. 2

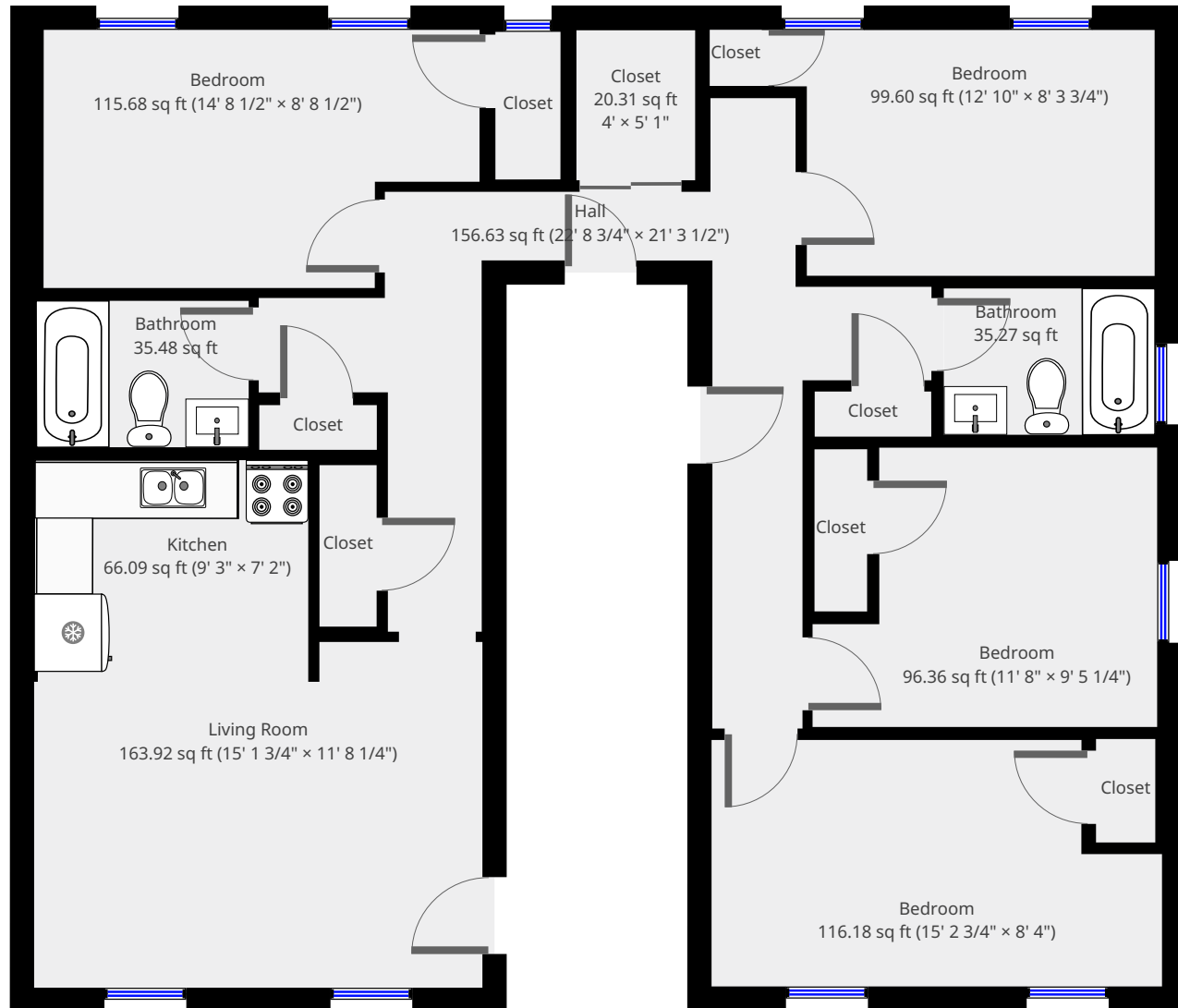
1st Floor



**Nazca Properties**  
manager@nazcaproperties.com  
513-535-2154

## Statistics

Area: 1190 sq ft  
1 Floor  
4 Bedrooms  
2 Bathrooms

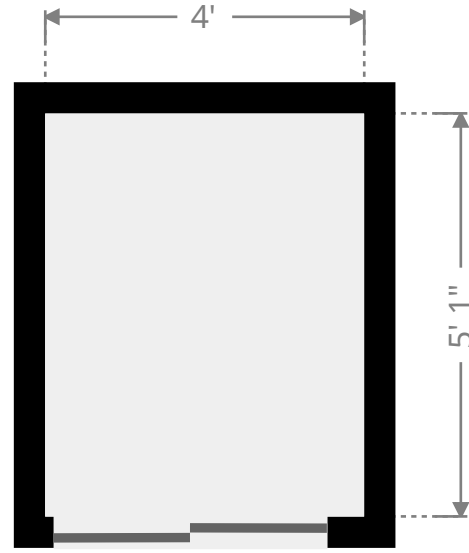
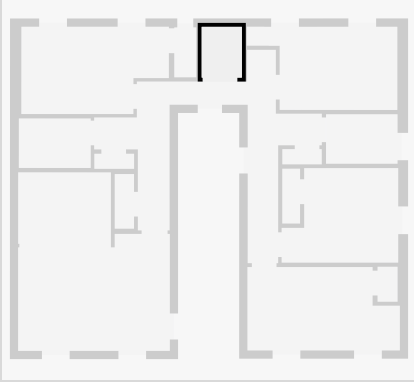


THIS FLOORPLAN IS PROVIDED WITHOUT WARRANTY OF ANY KIND. NAZCA PROPERTIES  
DISCLAIMS ANY WARRANTY INCLUDING, WITHOUT LIMITATION, SATISFACTORY QUALITY OR  
ACCURACY OF DIMENSIONS.



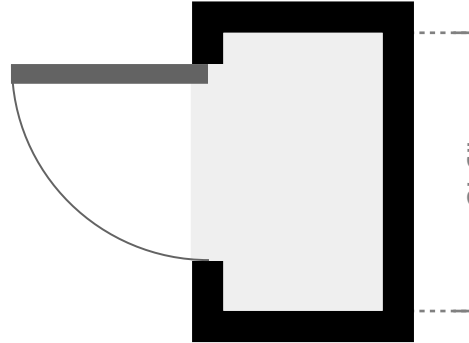
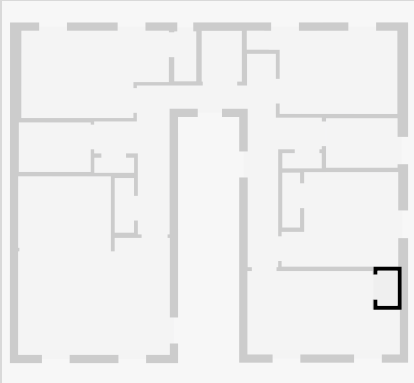
## Closet

Width: 4'  
Length: 5' 1"  
Area: 20.31 sq ft  
Perimeter: 18' 1 3/4"  
Ceiling Height: 9' 4"



## Closet

Width: 1' 11 3/4"  
Length: 3' 6"  
Area: 7.00 sq ft  
Perimeter: 11'  
Ceiling Height: 9' 4"

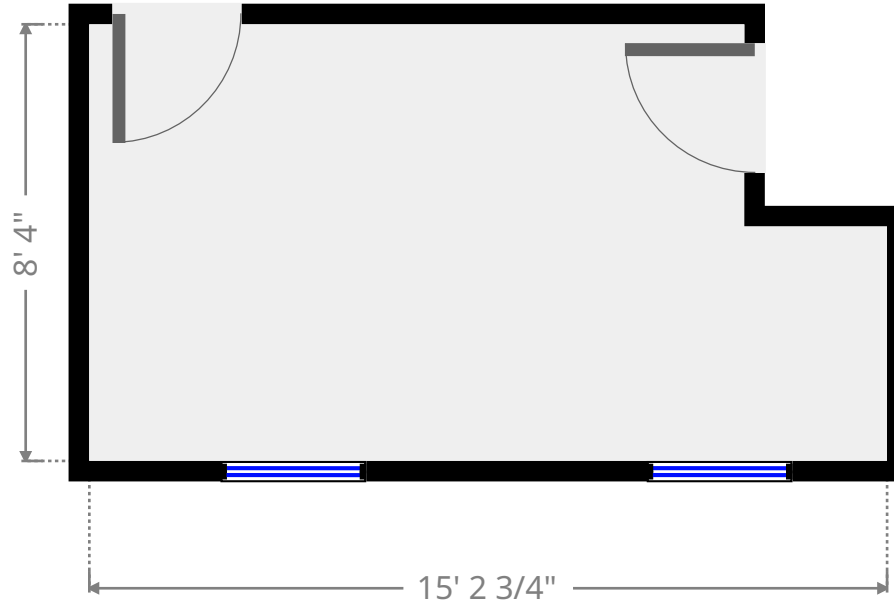
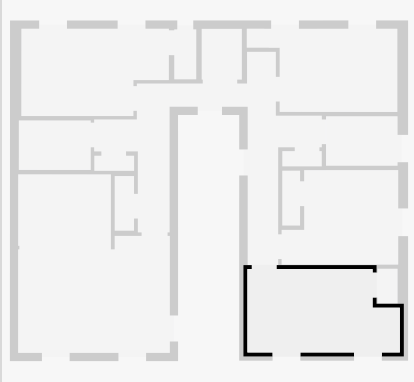


THIS FLOORPLAN IS PROVIDED WITHOUT WARRANTY OF ANY KIND. NAZCA PROPERTIES  
DISCLAIMS ANY WARRANTY INCLUDING, WITHOUT LIMITATION, SATISFACTORY QUALITY OR  
ACCURACY OF DIMENSIONS.



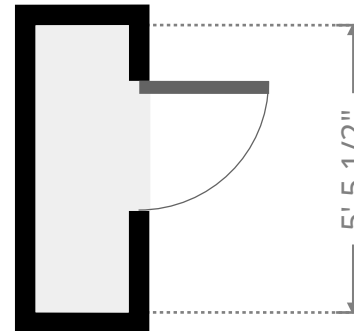
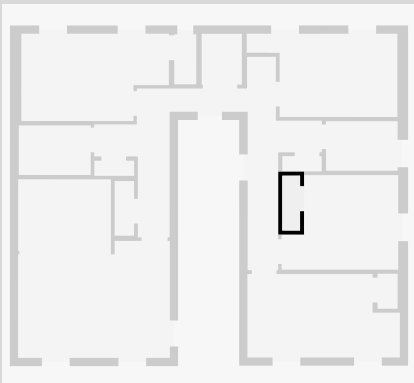
## Bedroom

Width: 8' 4"  
Length: 15' 2 3/4"  
Area: 116.18 sq ft  
Perimeter: 47' 1"  
Ceiling Height: 9' 4"



## Closet

Width: 1' 9 1/2"  
Length: 5' 5 1/2"  
Area: 9.73 sq ft  
Perimeter: 14' 6"  
Ceiling Height: 9' 4"

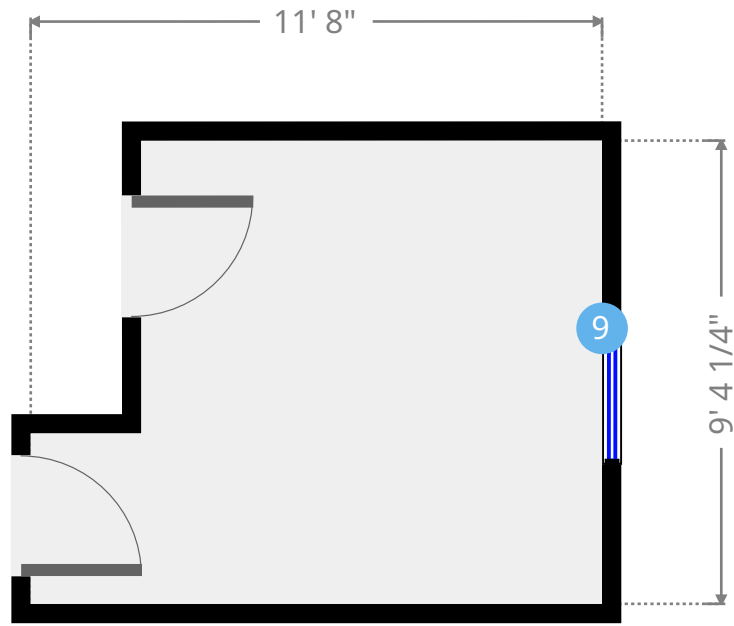
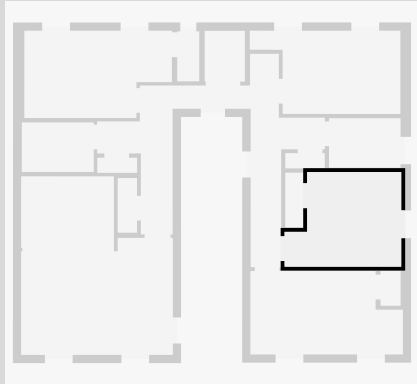


THIS FLOORPLAN IS PROVIDED WITHOUT WARRANTY OF ANY KIND. NAZCA PROPERTIES  
DISCLAIMS ANY WARRANTY INCLUDING, WITHOUT LIMITATION, SATISFACTORY QUALITY OR  
ACCURACY OF DIMENSIONS.



# Bedroom

Width: 9' 5 1/4"  
Length: 11' 8"  
Area: 96.36 sq ft  
Perimeter: 42' 1 3/4"  
Ceiling Height: 9' 4"



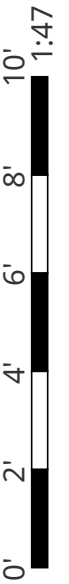
9



Hung Window

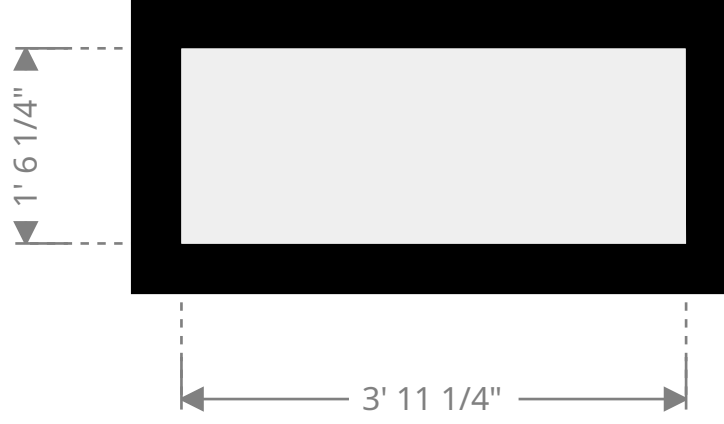
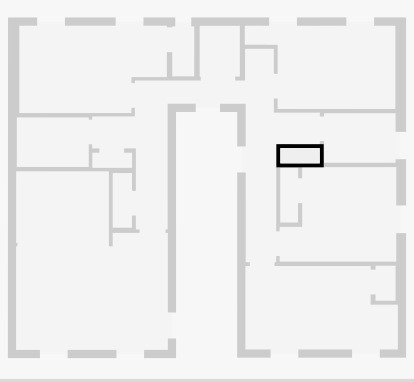
- Height: 5' 9 1/4"

THIS FLOORPLAN IS PROVIDED WITHOUT WARRANTY OF ANY KIND. NAZCA PROPERTIES  
DISCLAIMS ANY WARRANTY INCLUDING, WITHOUT LIMITATION, SATISFACTORY QUALITY OR  
ACCURACY OF DIMENSIONS.



# Closet

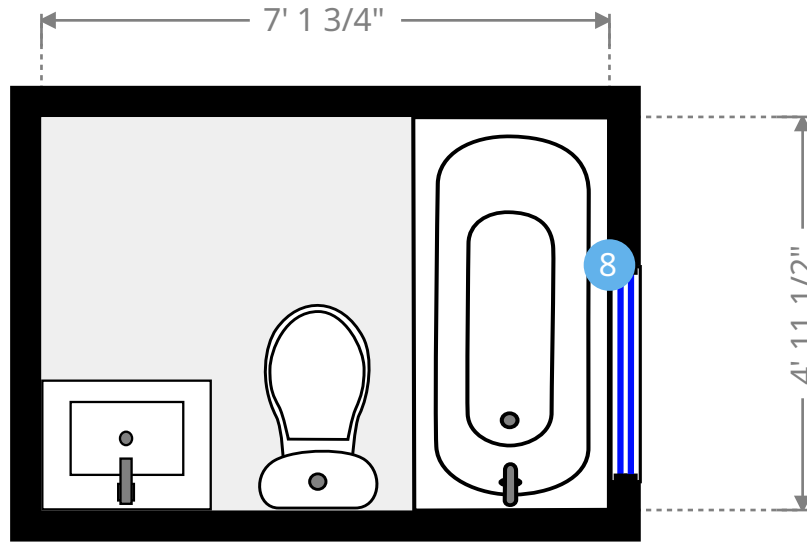
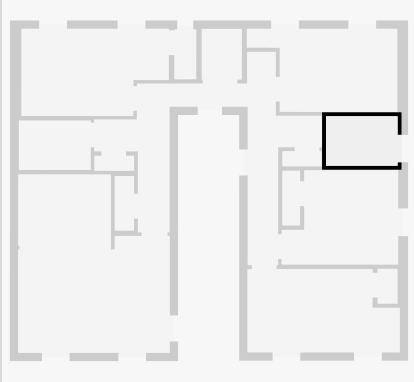
Width: 1' 6 1/4"  
Length: 3' 11 1/4"  
Area: 5.99 sq ft  
Perimeter: 10' 11"  
Ceiling Height: 9' 4"



THIS FLOORPLAN IS PROVIDED WITHOUT WARRANTY OF ANY KIND. NAZCA PROPERTIES  
DISCLAIMS ANY WARRANTY INCLUDING, WITHOUT LIMITATION, SATISFACTORY QUALITY OR  
ACCURACY OF DIMENSIONS.

# Bathroom

Width: 4' 11 1/4"  
Length: 7' 1 3/4"  
Area: 35.27 sq ft  
Perimeter: 24' 2"  
Ceiling Height: 9' 4"



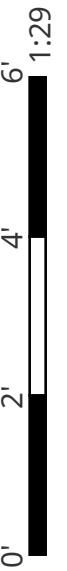
8



Hung Window

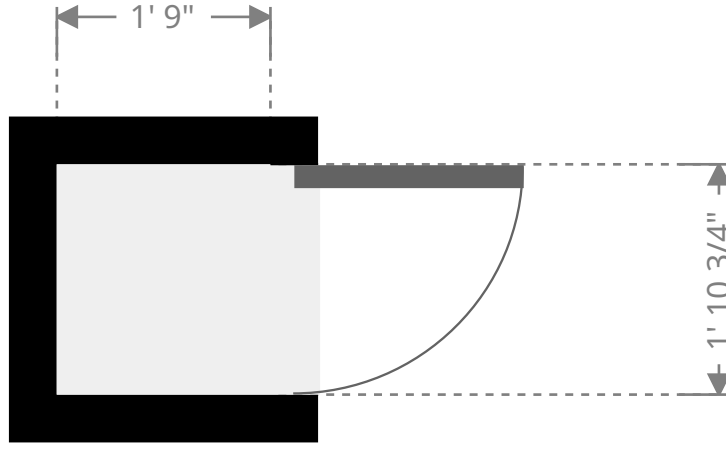
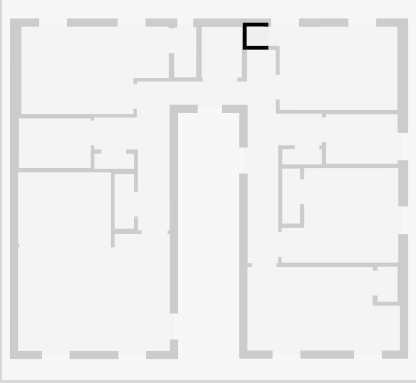
- Height: 3' 10 1/4"

THIS FLOORPLAN IS PROVIDED WITHOUT WARRANTY OF ANY KIND. NAZCA PROPERTIES  
DISCLAIMS ANY WARRANTY INCLUDING, WITHOUT LIMITATION, SATISFACTORY QUALITY OR  
ACCURACY OF DIMENSIONS.



# Closet

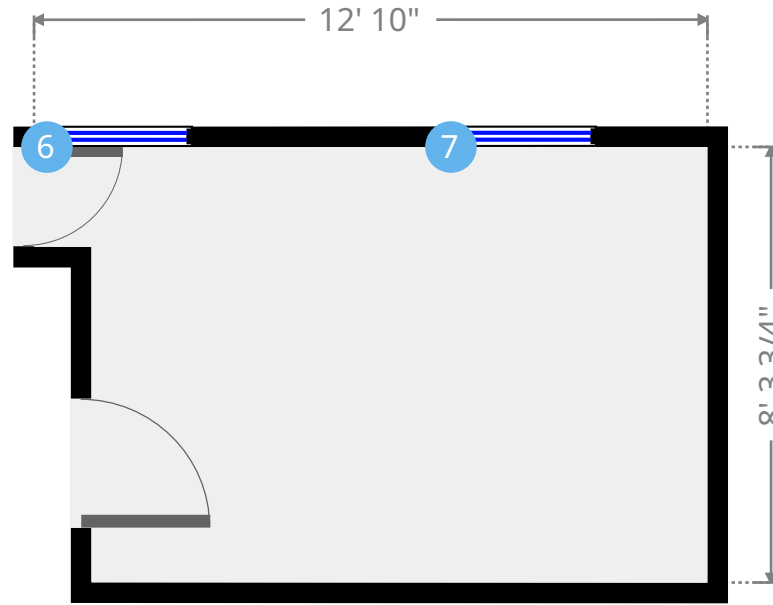
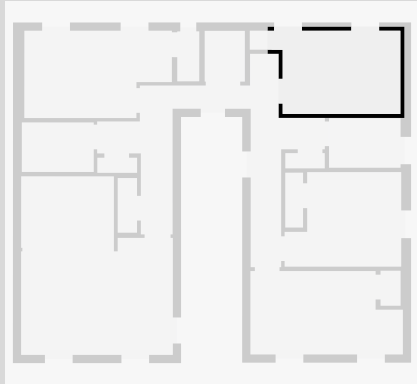
Width: 1' 9"  
Length: 1' 10 3/4"  
Area: 3.33 sq ft  
Perimeter: 7' 3 3/4"  
Ceiling Height: 9' 4"



THIS FLOORPLAN IS PROVIDED WITHOUT WARRANTY OF ANY KIND. NAZCA PROPERTIES  
DISCLAIMS ANY WARRANTY INCLUDING, WITHOUT LIMITATION, SATISFACTORY QUALITY OR  
ACCURACY OF DIMENSIONS.

# Bedroom

Width: 8' 3 3/4"  
 Length: 12' 10"  
 Area: 99.60 sq ft  
 Perimeter: 42' 3 1/2"  
 Ceiling Height: 9' 4"



6



Hung Window

- Height: 6' 1 1/4"

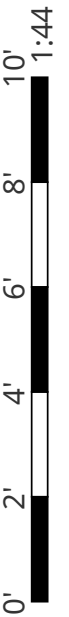
7



Hung Window

- Height: 6' 1 1/4"

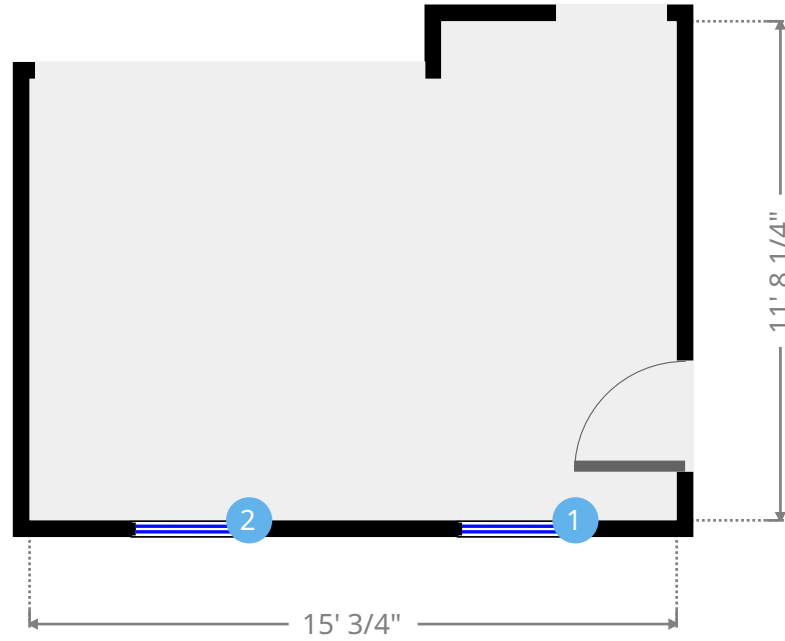
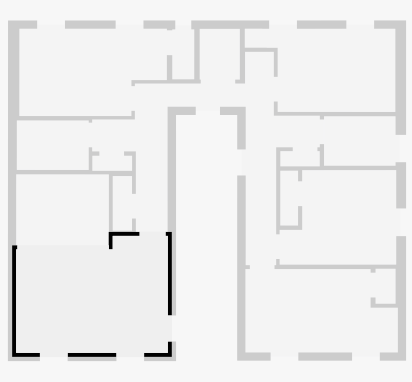
THIS FLOORPLAN IS PROVIDED WITHOUT WARRANTY OF ANY KIND. NAZCA PROPERTIES  
 DISCLAIMS ANY WARRANTY INCLUDING, WITHOUT LIMITATION, SATISFACTORY QUALITY OR  
 ACCURACY OF DIMENSIONS.





# Living Room

Width: 11' 8 1/4"  
Length: 15' 1 3/4"  
Area: 163.92 sq ft  
Perimeter: 53' 7 3/4"  
Ceiling Height: 9' 4"



1



Hung Window

- Height: 6' 1/2"

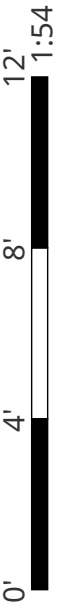
2



Hung Window

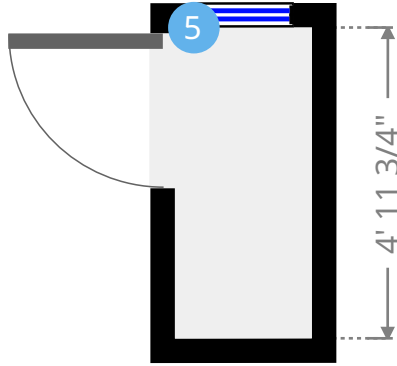
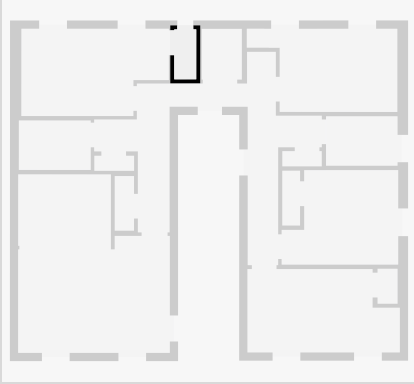
- Height: 6' 1/2"

THIS FLOORPLAN IS PROVIDED WITHOUT WARRANTY OF ANY KIND. NAZCA PROPERTIES  
DISCLAIMS ANY WARRANTY INCLUDING, WITHOUT LIMITATION, SATISFACTORY QUALITY OR  
ACCURACY OF DIMENSIONS.



# Closet

Width: 2' 2 1/2"  
Length: 4' 11 3/4"  
Area: 10.95 sq ft  
Perimeter: 14' 4 1/4"  
Ceiling Height: 9' 4"



5



Hung Window

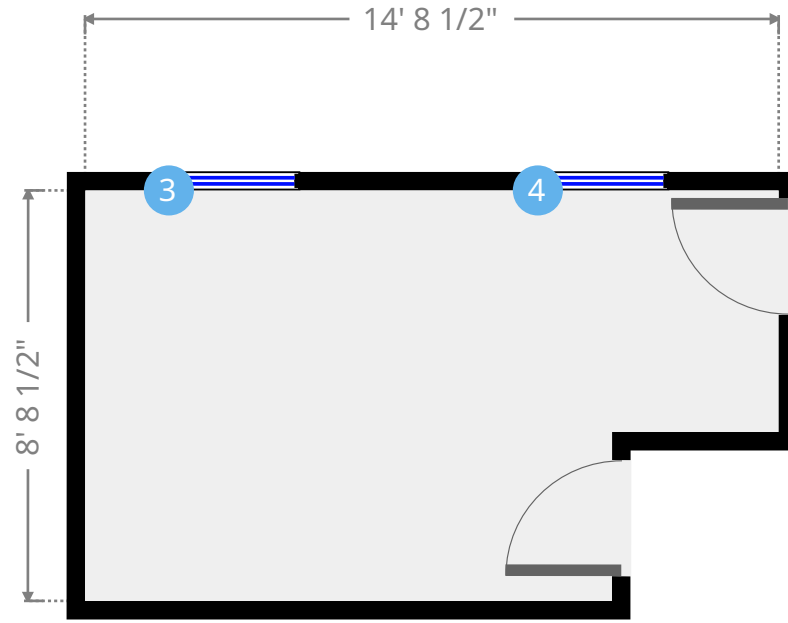
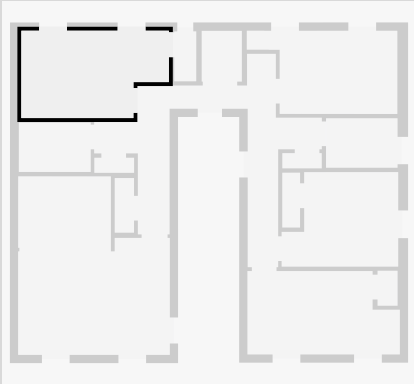
- Height: 2' 9"



THIS FLOORPLAN IS PROVIDED WITHOUT WARRANTY OF ANY KIND. NAZCA PROPERTIES  
DISCLAIMS ANY WARRANTY INCLUDING, WITHOUT LIMITATION, SATISFACTORY QUALITY OR  
ACCURACY OF DIMENSIONS.

# Bedroom

Width: 8' 8 1/2"  
 Length: 14' 8 1/2"  
 Area: 115.68 sq ft  
 Perimeter: 46' 10 1/2"  
 Ceiling Height: 9' 4"



3



Hung Window

- Height: 6' 1"

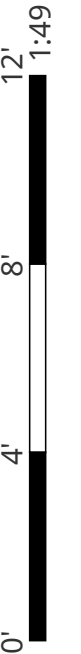
4



Hung Window

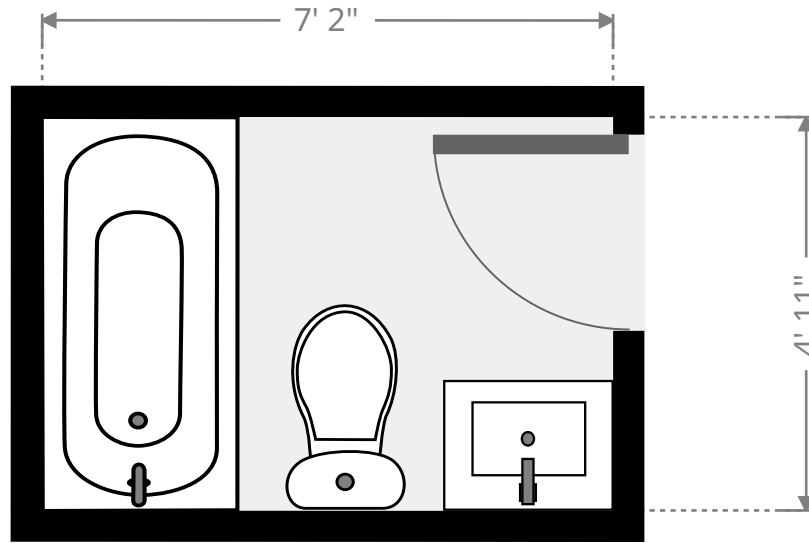
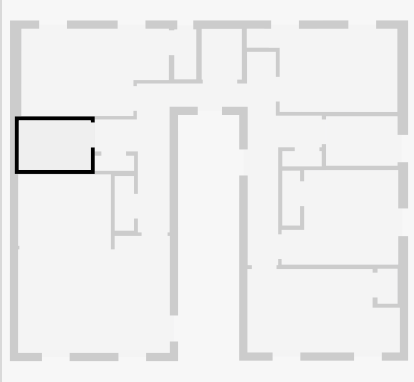
- Height: 6' 1"

THIS FLOORPLAN IS PROVIDED WITHOUT WARRANTY OF ANY KIND. NAZCA PROPERTIES  
 DISCLAIMS ANY WARRANTY INCLUDING, WITHOUT LIMITATION, SATISFACTORY QUALITY OR  
 ACCURACY OF DIMENSIONS.



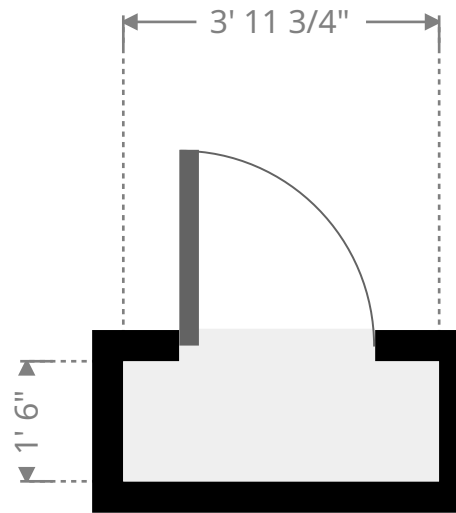
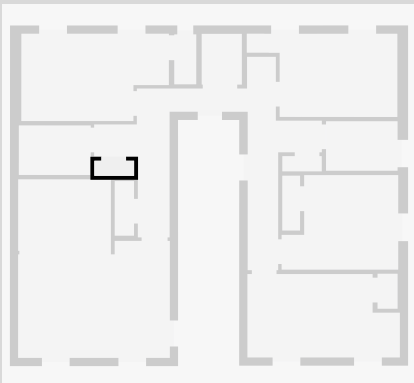
## Bathroom

Width: 4' 11"  
Length: 7' 2 1/4"  
Area: 35.48 sq ft  
Perimeter: 24' 3"  
Ceiling Height: 9' 4"

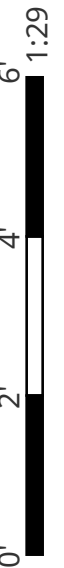


## Closet

Width: 1' 6"  
Length: 3' 11 3/4"  
Area: 5.99 sq ft  
Perimeter: 10' 11 1/2"  
Ceiling Height: 9' 4"

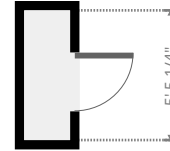
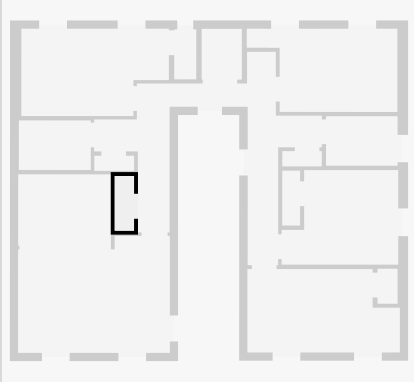


THIS FLOORPLAN IS PROVIDED WITHOUT WARRANTY OF ANY KIND. NAZCA PROPERTIES  
DISCLAIMS ANY WARRANTY INCLUDING, WITHOUT LIMITATION, SATISFACTORY QUALITY OR  
ACCURACY OF DIMENSIONS.



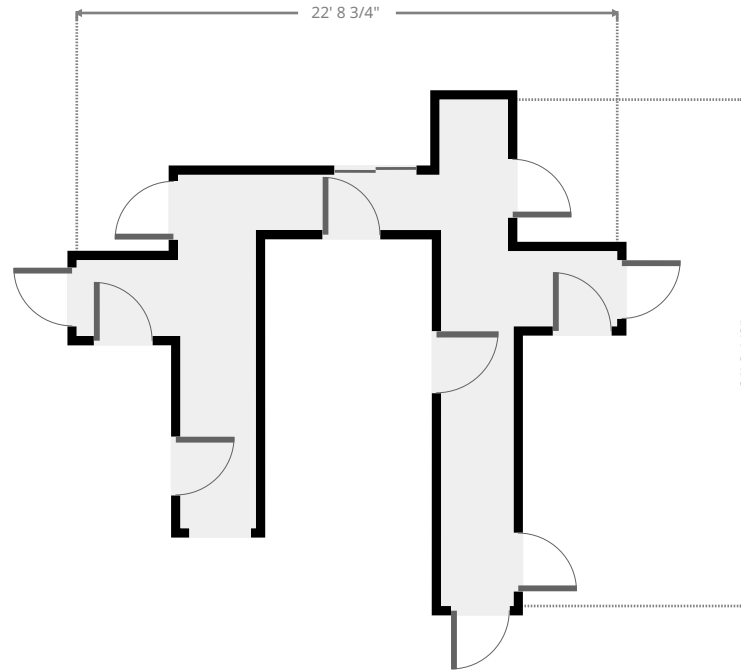
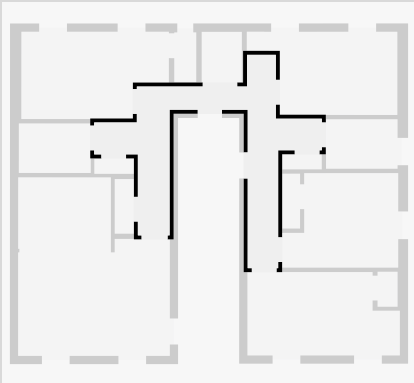
## Closet

Width: 1' 11 1/4"  
Length: 5' 5 1/4"  
Area: 10.52 sq ft  
Perimeter: 14' 9 1/4"  
Ceiling Height: 9' 4"

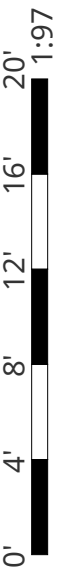


## Hall

Width: 21' 3 1/2"  
Length: 22' 8 3/4"  
Area: 156.63 sq ft  
Perimeter: 113' 1 1/4"  
Ceiling Height: 9' 4"

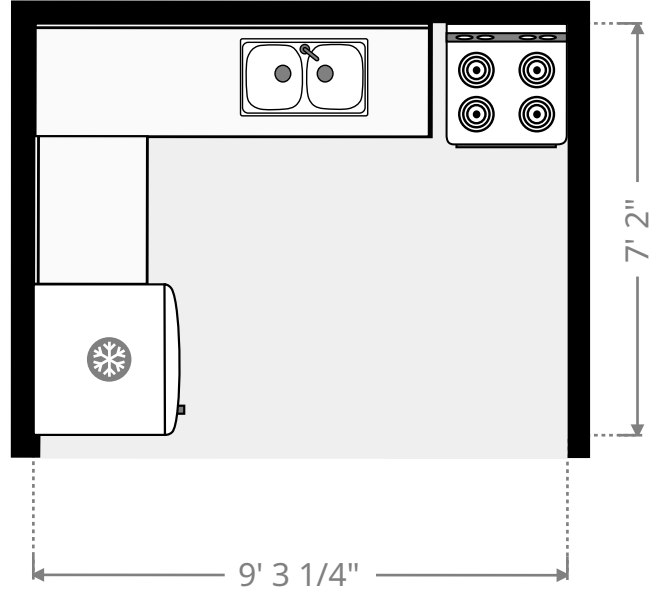
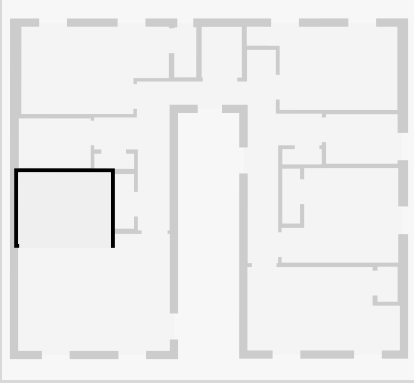


THIS FLOORPLAN IS PROVIDED WITHOUT WARRANTY OF ANY KIND. NAZCA PROPERTIES  
DISCLAIMS ANY WARRANTY INCLUDING, WITHOUT LIMITATION, SATISFACTORY QUALITY OR  
ACCURACY OF DIMENSIONS.



# Kitchen

Width: 7' 2"  
Length: 9' 3"  
Area: 66.09 sq ft  
Perimeter: 32' 9 1/2"  
Ceiling Height: 9' 4"



THIS FLOORPLAN IS PROVIDED WITHOUT WARRANTY OF ANY KIND. NAZCA PROPERTIES  
DISCLAIMS ANY WARRANTY INCLUDING, WITHOUT LIMITATION, SATISFACTORY QUALITY OR  
ACCURACY OF DIMENSIONS.