

**227 Renner St.  
Apt. 3**

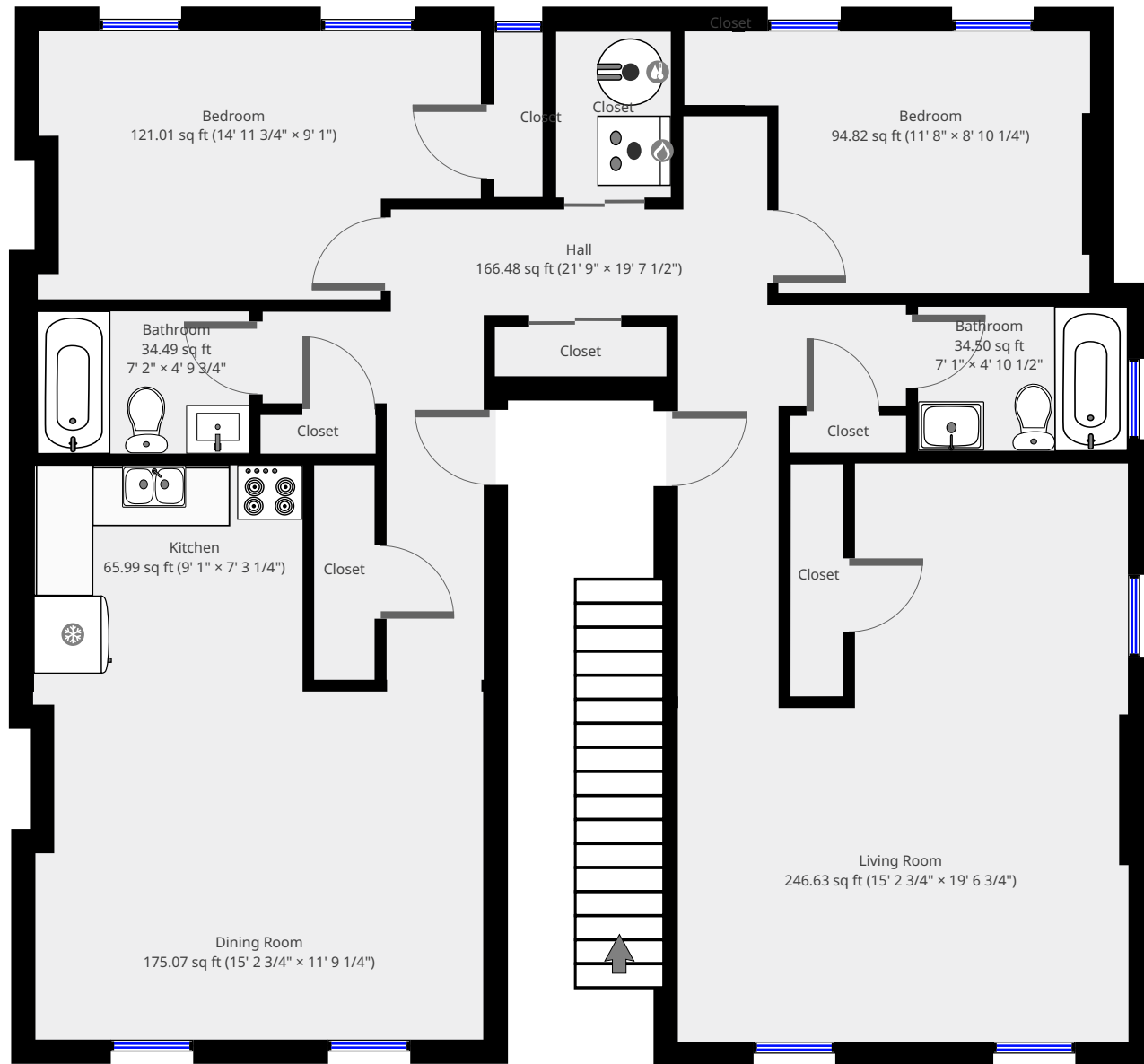
2nd Floor



**Nazca Properties**  
manager@nazcaproperties.com  
513-535-2154

**Statistics**

Area: 1250 sq ft  
1 Floor  
2 Bedrooms  
2 Bathrooms

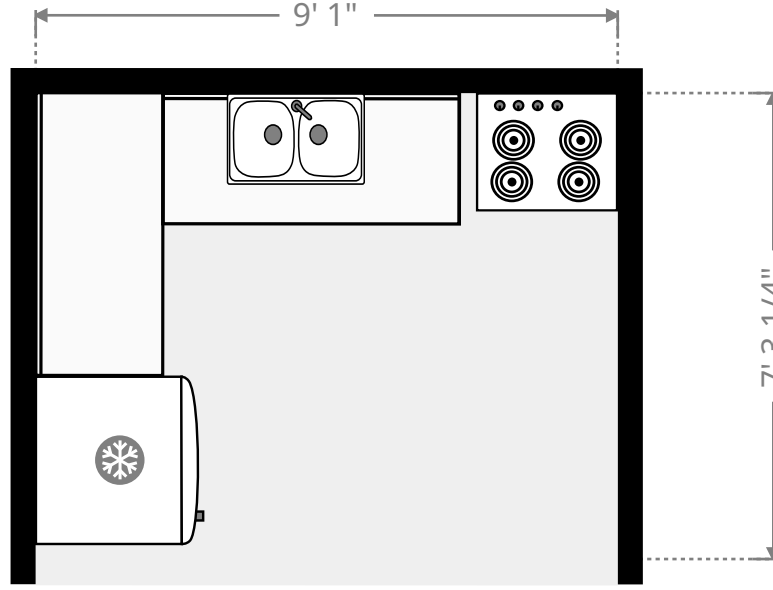
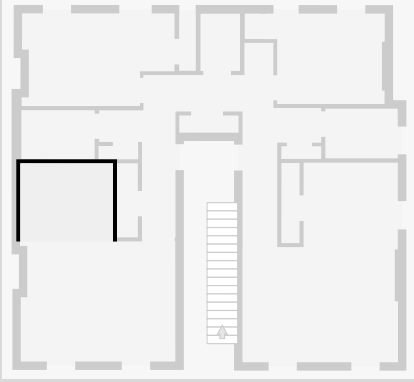


THIS FLOORPLAN IS PROVIDED WITHOUT WARRANTY OF ANY KIND. NAZCA PROPERTIES  
DISCLAIMS ANY WARRANTY INCLUDING, WITHOUT LIMITATION, SATISFACTORY QUALITY OR  
ACCURACY OF DIMENSIONS.



# Kitchen

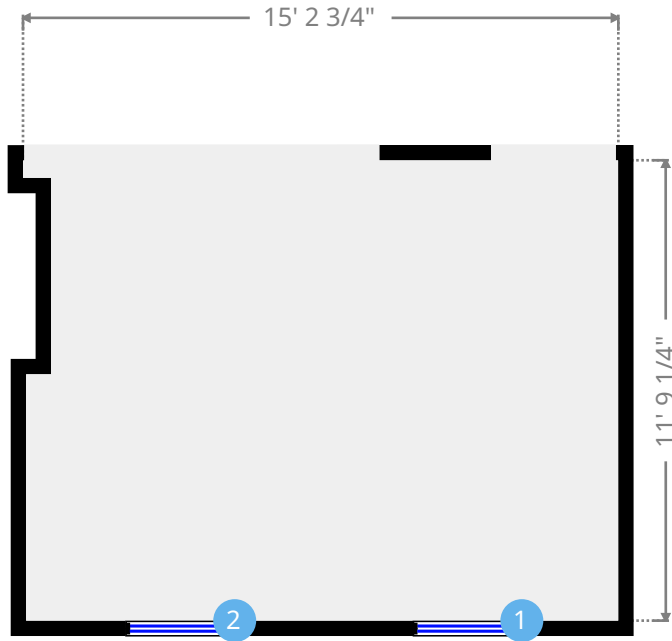
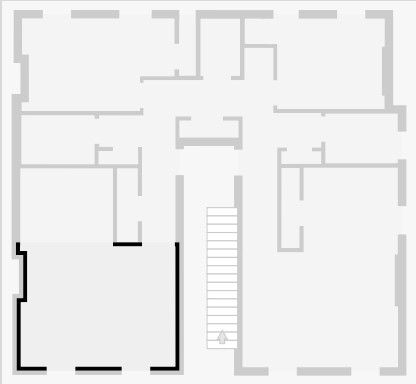
Width: 7' 3 1/4"  
Length: 9' 1"  
Area: 65.99 sq ft  
Perimeter: 32' 8 1/4"  
Ceiling Height: 8' 9 3/4"



THIS FLOORPLAN IS PROVIDED WITHOUT WARRANTY OF ANY KIND. NAZCA PROPERTIES  
DISCLAIMS ANY WARRANTY INCLUDING, WITHOUT LIMITATION, SATISFACTORY QUALITY OR  
ACCURACY OF DIMENSIONS.

# Dining Room

Width: 11' 9 1/4"  
Length: 15' 2 3/4"  
Area: 175.07 sq ft  
Perimeter: 55' 3"  
Ceiling Height: 8' 10"



1



Hung Window

- Height: 5' 4"

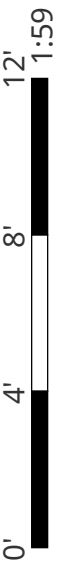
2



Hung Window

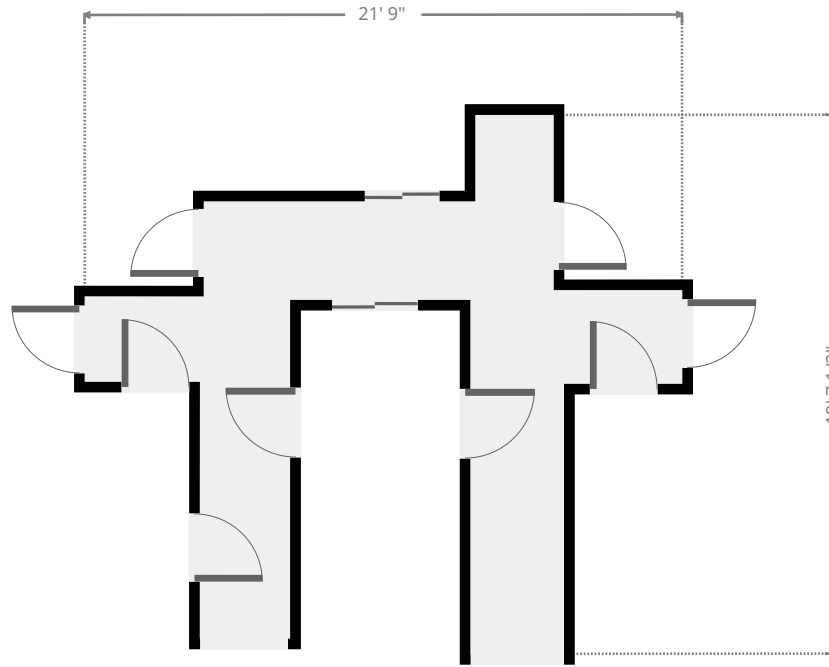
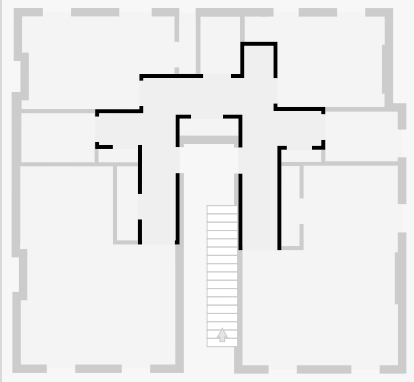
- Height: 5' 4 1/4"

THIS FLOORPLAN IS PROVIDED WITHOUT WARRANTY OF ANY KIND. NAZCA PROPERTIES  
DISCLAIMS ANY WARRANTY INCLUDING, WITHOUT LIMITATION, SATISFACTORY QUALITY OR  
ACCURACY OF DIMENSIONS.



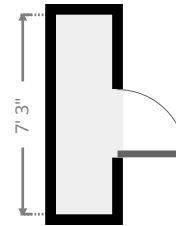
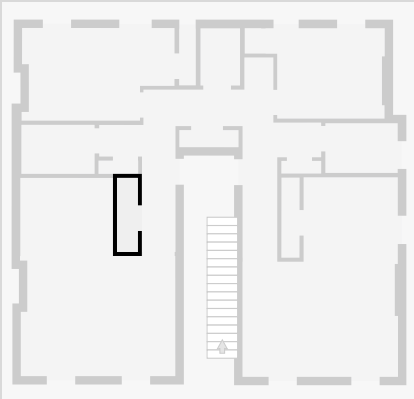
## Hall

Width: 19' 7 1/2"  
Length: 21' 9"  
Area: 166.48 sq ft  
Perimeter: 107' 5"  
Ceiling Height: 7' 5 3/4"

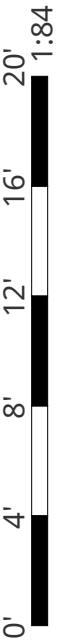


## Closet

Width: 2' 1/2"  
Length: 7' 3"  
Area: 14.81 sq ft  
Perimeter: 18' 7 1/4"

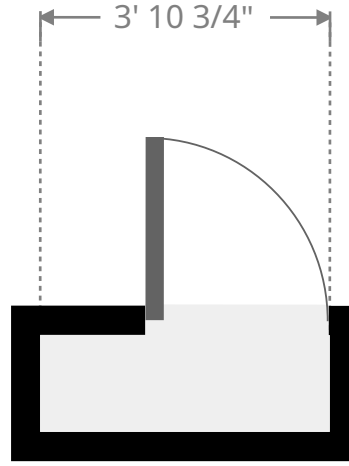
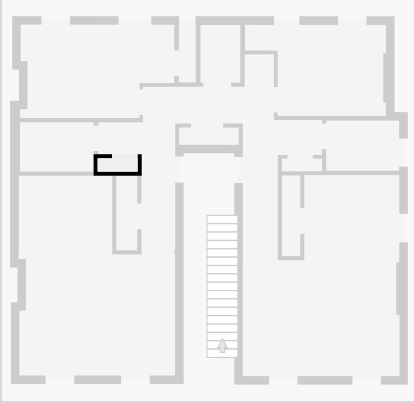


THIS FLOORPLAN IS PROVIDED WITHOUT WARRANTY OF ANY KIND. NAZCA PROPERTIES  
DISCLAIMS ANY WARRANTY INCLUDING, WITHOUT LIMITATION, SATISFACTORY QUALITY OR  
ACCURACY OF DIMENSIONS.



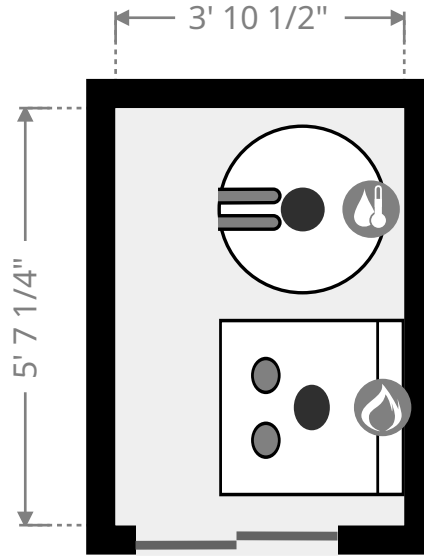
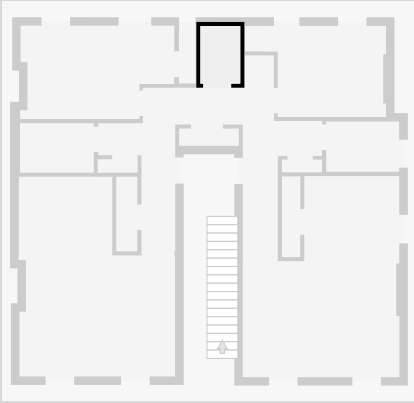
## Closet

Width: 1' 3 3/4"  
 Length: 3' 10 3/4"  
 Area: 5.06 sq ft  
 Perimeter: 10' 4 1/2"

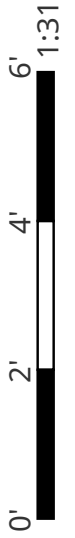


## Closet

Width: 3' 10 1/2"  
 Length: 5' 7 1/4"  
 Area: 21.73 sq ft  
 Perimeter: 18' 11 1/2"

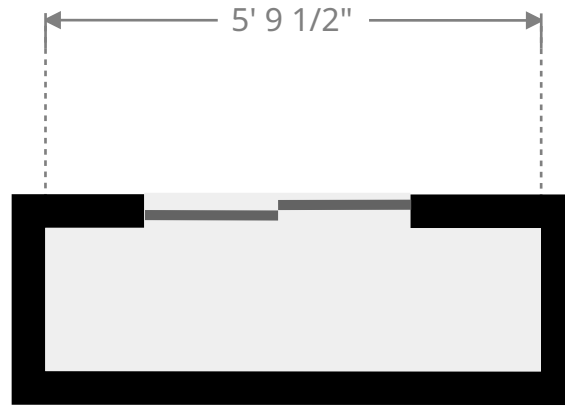
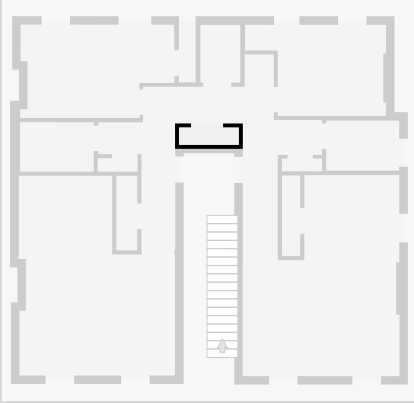


THIS FLOORPLAN IS PROVIDED WITHOUT WARRANTY OF ANY KIND. NAZCA PROPERTIES  
 DISCLAIMS ANY WARRANTY INCLUDING, WITHOUT LIMITATION, SATISFACTORY QUALITY OR  
 ACCURACY OF DIMENSIONS.



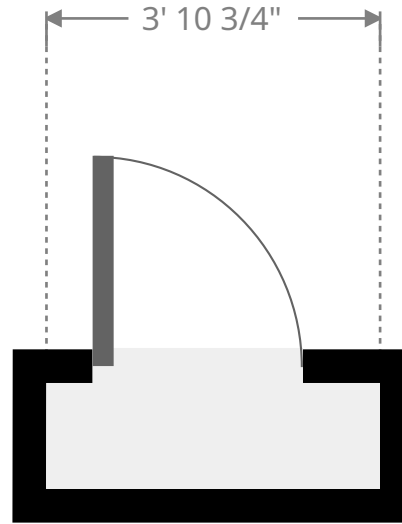
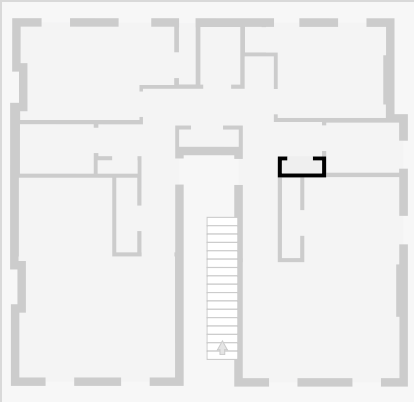
## Closet

Width: 1' 8 1/4"  
Length: 5' 9 1/2"  
Area: 9.72 sq ft  
Perimeter: 14' 11 1/2"

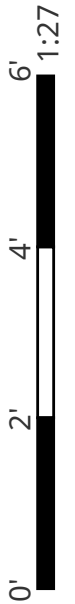


## Closet

Width: 1' 3"  
Length: 3' 11"  
Area: 4.84 sq ft  
Perimeter: 10' 3 1/2"

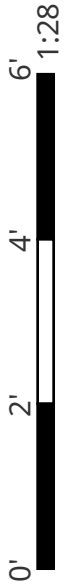
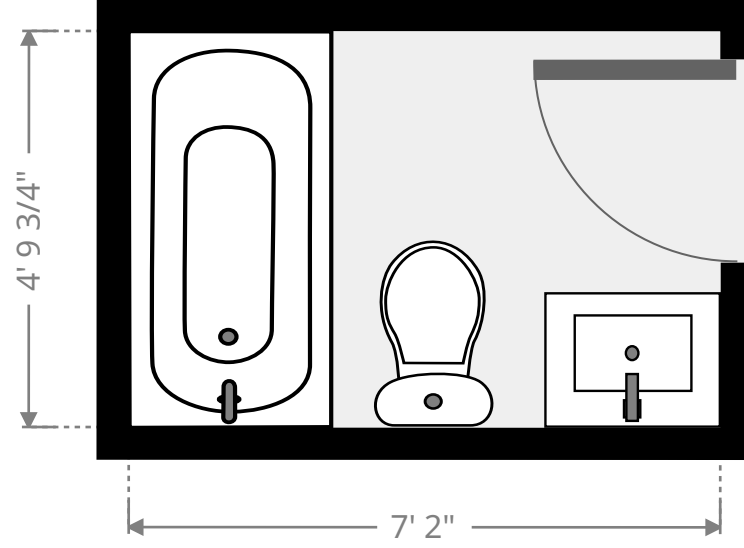
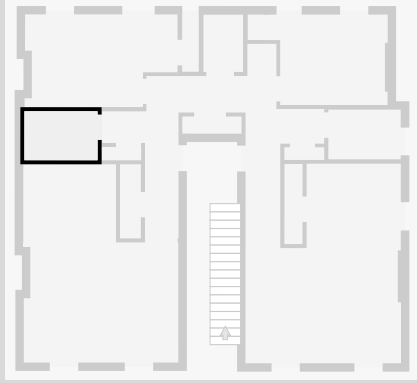


THIS FLOORPLAN IS PROVIDED WITHOUT WARRANTY OF ANY KIND. NAZCA PROPERTIES  
DISCLAIMS ANY WARRANTY INCLUDING, WITHOUT LIMITATION, SATISFACTORY QUALITY OR  
ACCURACY OF DIMENSIONS.



# Bathroom

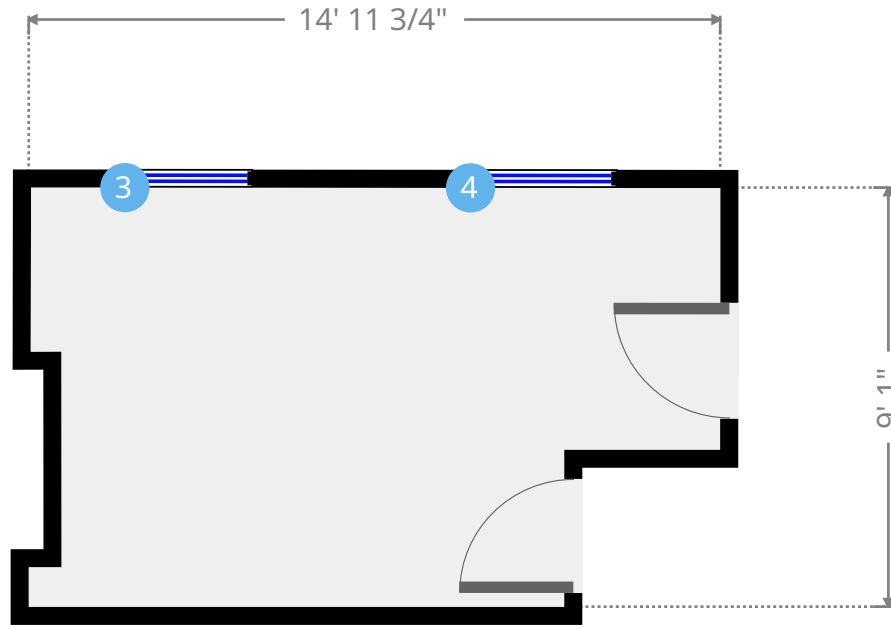
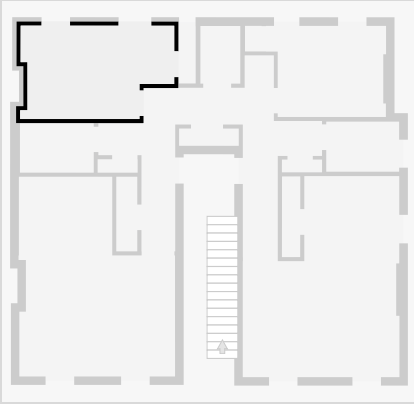
Width: 4' 9 3/4"  
Length: 7' 2"  
Area: 34.49 sq ft  
Perimeter: 23' 11 1/2"  
Ceiling Height: 7' 6 3/4"



THIS FLOORPLAN IS PROVIDED WITHOUT WARRANTY OF ANY KIND. NAZCA PROPERTIES  
DISCLAIMS ANY WARRANTY INCLUDING, WITHOUT LIMITATION, SATISFACTORY QUALITY OR  
ACCURACY OF DIMENSIONS.

# Bedroom

Width: 9' 1"  
Length: 14' 11 3/4"  
Area: 121.01 sq ft  
Perimeter: 49' 5 1/2"



3



Hung Window

- Height: 5' 4 1/4"

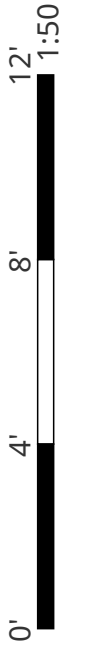
4



Hung Window

- Height: 5' 4 1/4"

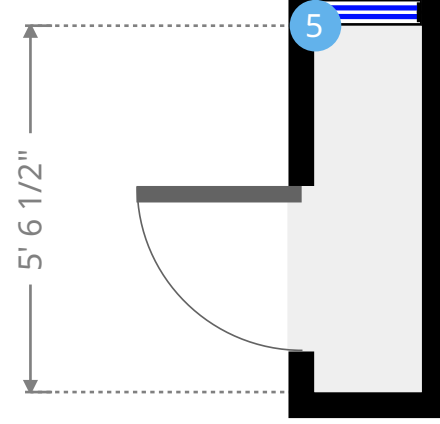
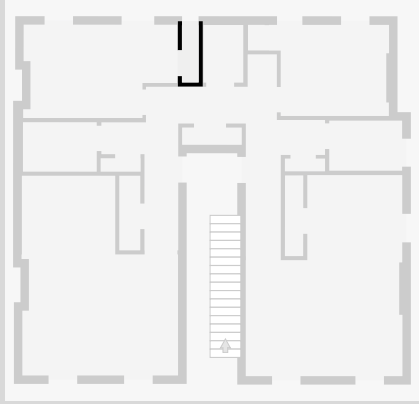
THIS FLOORPLAN IS PROVIDED WITHOUT WARRANTY OF ANY KIND. NAZCA PROPERTIES  
DISCLAIMS ANY WARRANTY INCLUDING, WITHOUT LIMITATION, SATISFACTORY QUALITY OR  
ACCURACY OF DIMENSIONS.





# Closet

Width: 1' 7 1/2"  
Length: 5' 6 3/4"  
Area: 9.04 sq ft  
Perimeter: 14' 4 1/2"

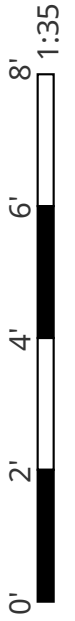


5



Hung Window

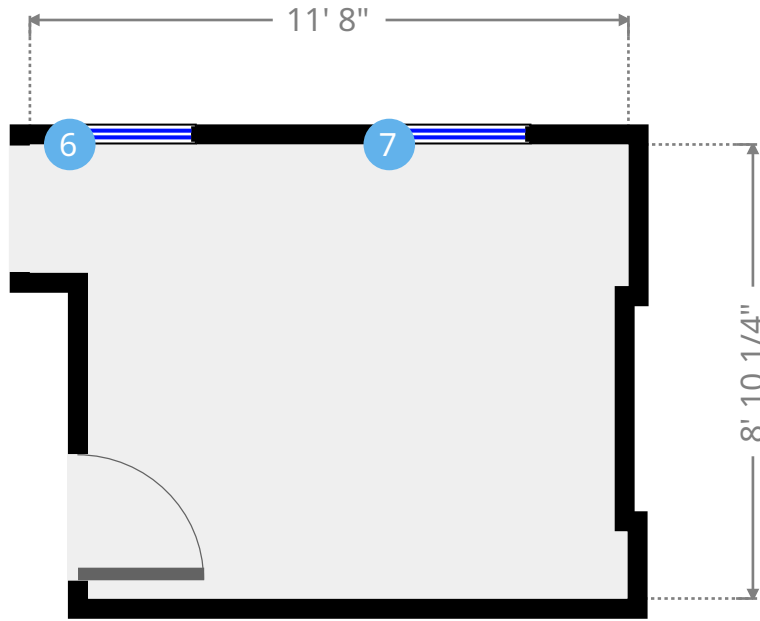
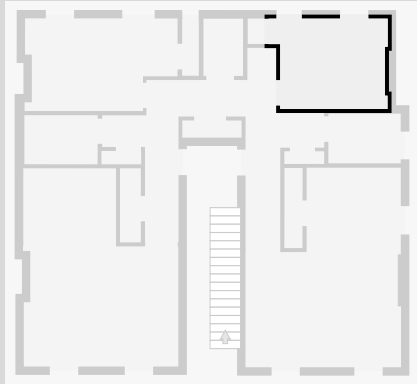
- Height: 2' 9 3/4"



THIS FLOORPLAN IS PROVIDED WITHOUT WARRANTY OF ANY KIND. NAZCA PROPERTIES  
DISCLAIMS ANY WARRANTY INCLUDING, WITHOUT LIMITATION, SATISFACTORY QUALITY OR  
ACCURACY OF DIMENSIONS.

# Bedroom

Width: 8' 10 1/4"  
 Length: 11' 8"  
 Area: 94.82 sq ft  
 Perimeter: 41' 6 3/4"  
 Ceiling Height: 8' 1"



6



Hung Window

- Height: 5' 1 1/4"

7



Hung Window

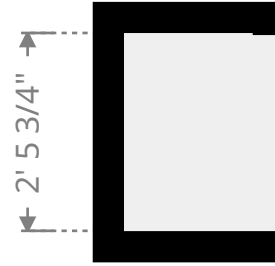
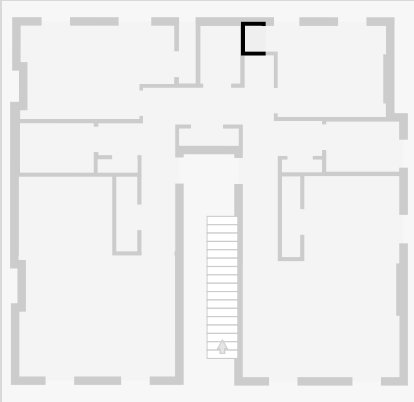
- Height: 5' 3 1/2"

THIS FLOORPLAN IS PROVIDED WITHOUT WARRANTY OF ANY KIND. NAZCA PROPERTIES  
 DISCLAIMS ANY WARRANTY INCLUDING, WITHOUT LIMITATION, SATISFACTORY QUALITY OR  
 ACCURACY OF DIMENSIONS.



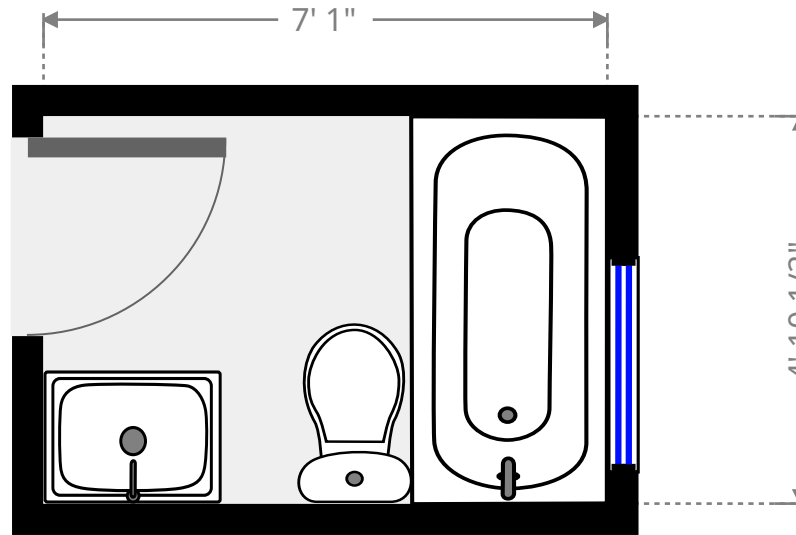
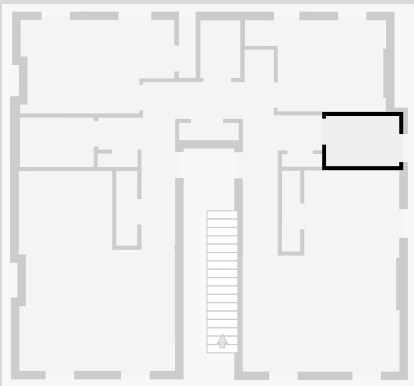
## Closet

Width: 1' 7 1/4"  
Length: 2' 5 3/4"  
Area: 4.01 sq ft  
Perimeter: 8' 2 1/2"

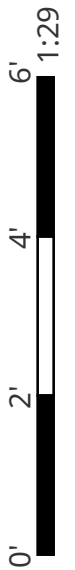


## Bathroom

Width: 4' 10 1/2"  
Length: 7' 1"  
Area: 34.50 sq ft  
Perimeter: 23' 11"  
Ceiling Height: 8' 1 1/4"

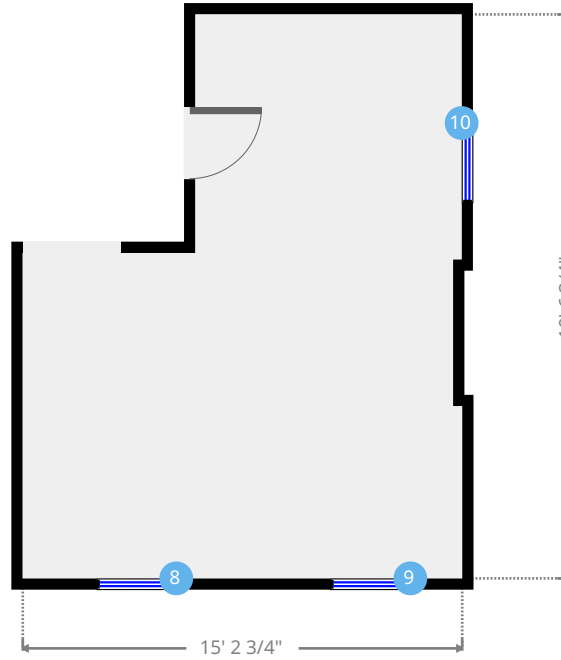
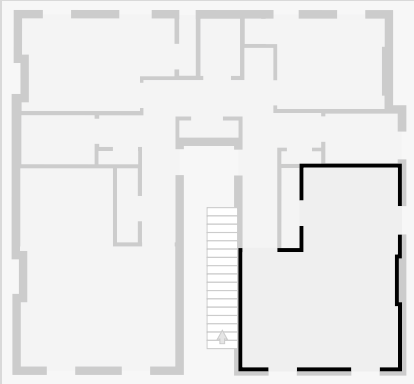


THIS FLOORPLAN IS PROVIDED WITHOUT WARRANTY OF ANY KIND. NAZCA PROPERTIES  
DISCLAIMS ANY WARRANTY INCLUDING, WITHOUT LIMITATION, SATISFACTORY QUALITY OR  
ACCURACY OF DIMENSIONS.



# Living Room

Width: 15' 2 3/4"  
 Length: 19' 6 3/4"  
 Area: 246.63 sq ft  
 Perimeter: 70' 2"  
 Ceiling Height: 8' 10"



THIS FLOORPLAN IS PROVIDED WITHOUT WARRANTY OF ANY KIND. NAZCA PROPERTIES DISCLAIMS ANY WARRANTY INCLUDING, WITHOUT LIMITATION, SATISFACTORY QUALITY OR ACCURACY OF DIMENSIONS.

8



Hung Window

- Height: 5' 2 1/2"

9



Hung Window

- Height: 5' 4 1/2"

10



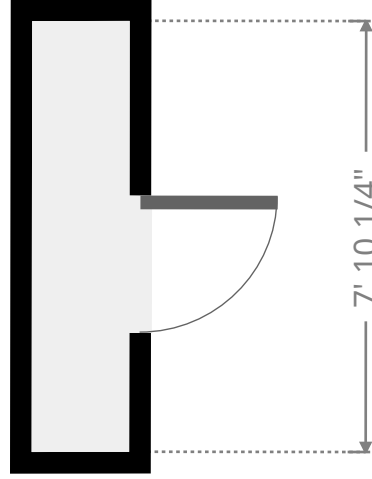
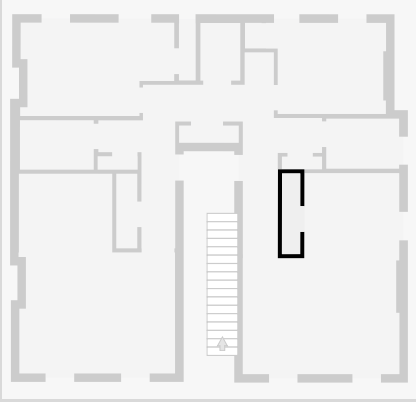
Hung Window

- Height: 5' 4 1/4"



# Closet

Width: 1' 9 1/2"  
Length: 7' 10 1/4"  
Area: 13.92 sq ft  
Perimeter: 19' 2 3/4"



THIS FLOORPLAN IS PROVIDED WITHOUT WARRANTY OF ANY KIND. NAZCA PROPERTIES  
DISCLAIMS ANY WARRANTY INCLUDING, WITHOUT LIMITATION, SATISFACTORY QUALITY OR  
ACCURACY OF DIMENSIONS.