

23 W Daniels St.

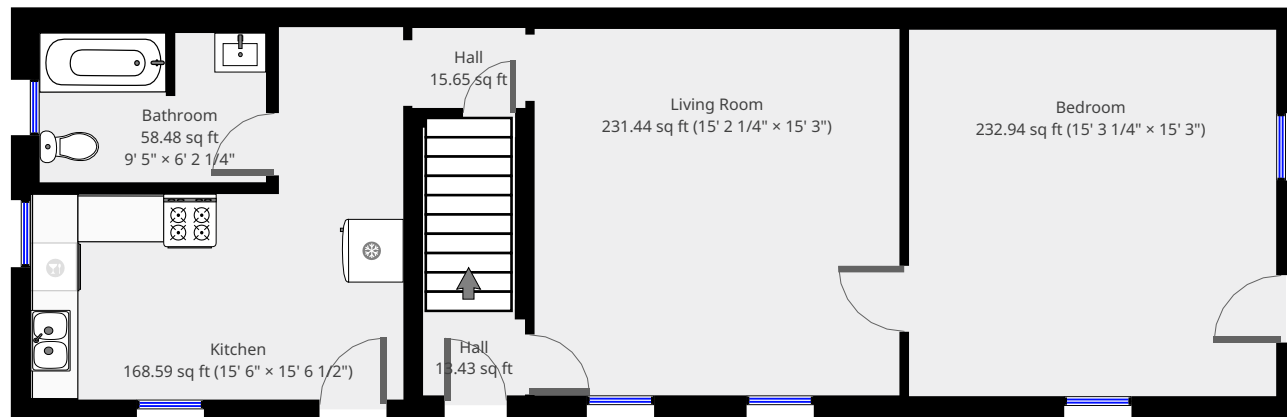
Ground Floor



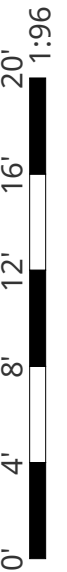
Nazca Properties
manager@nazcaproperties.com
513-535-2154

Statistics

Area: 1742 sq ft
3 Floors
3 Bedrooms
1 Bathroom

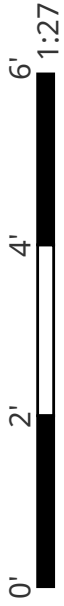
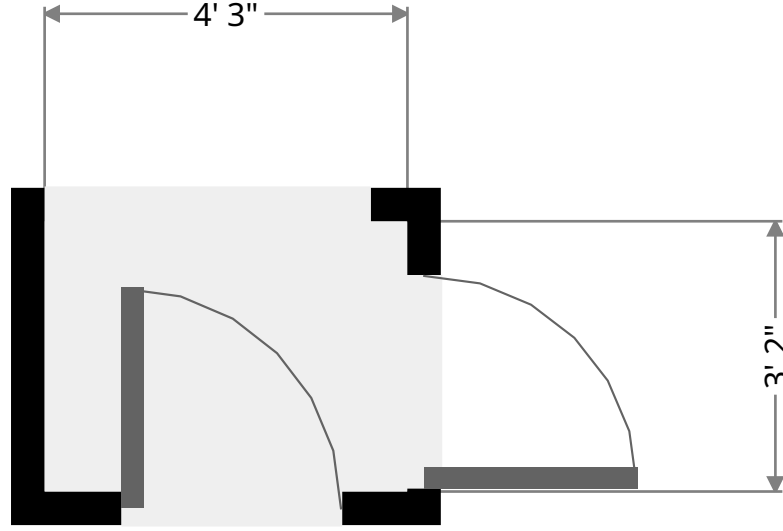
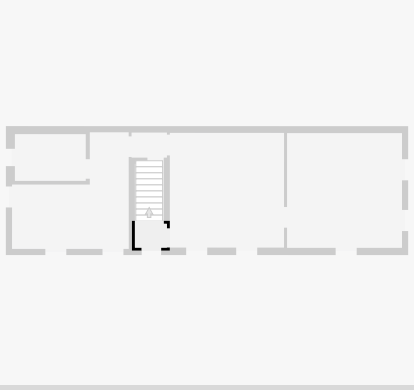


THIS FLOORPLAN IS PROVIDED WITHOUT WARRANTY OF ANY KIND. NAZCA PROPERTIES
DISCLAIMS ANY WARRANTY INCLUDING, WITHOUT LIMITATION, SATISFACTORY QUALITY OR
ACCURACY OF DIMENSIONS.



Hall

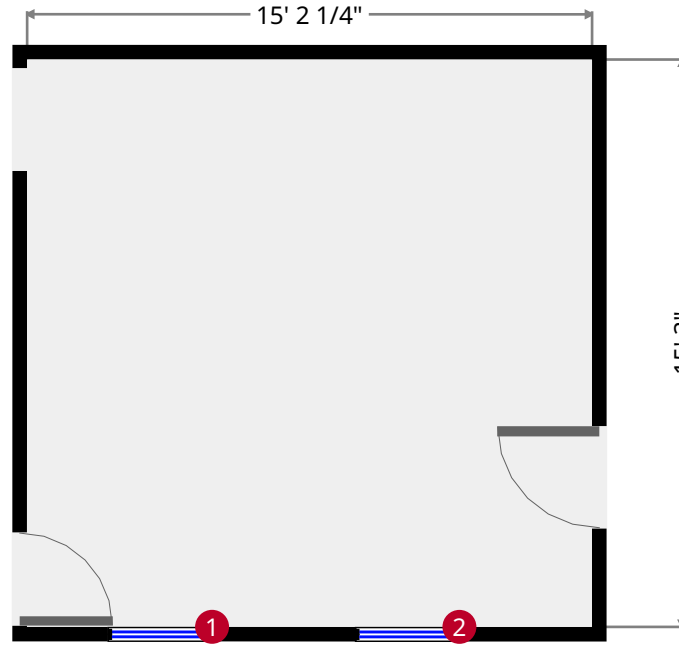
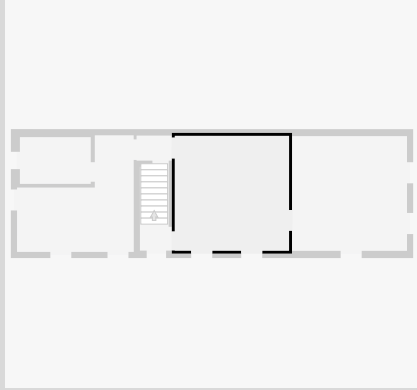
Width:	3' 2"
Length:	4' 3"
Area	13.43 sq ft
Perimeter	14' 9 3/4"
Ceiling Height:	10' 2 3/4"



THIS FLOORPLAN IS PROVIDED WITHOUT WARRANTY OF ANY KIND. NAZCA PROPERTIES
DISCLAIMS ANY WARRANTY INCLUDING, WITHOUT LIMITATION, SATISFACTORY QUALITY OR
ACCURACY OF DIMENSIONS.

Living Room

Width: 15' 2 1/4"
Length: 15' 3"
Area: 231.44 sq ft
Perimeter: 60' 10 1/4"
Ceiling Height: 10' 1 1/2"



1



Hung Window

- Height: 5' 10 1/4"

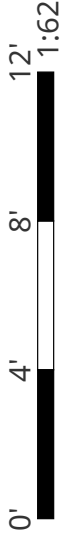
2



Hung Window

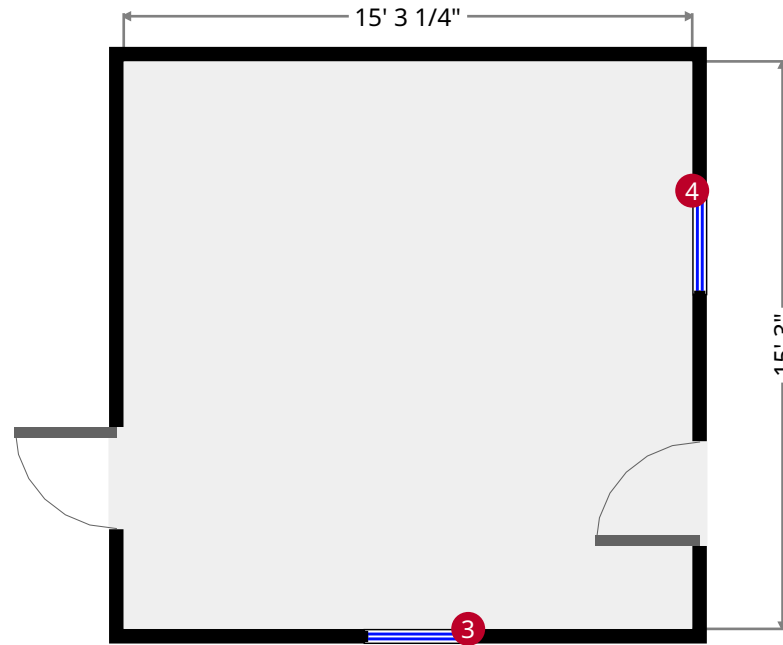
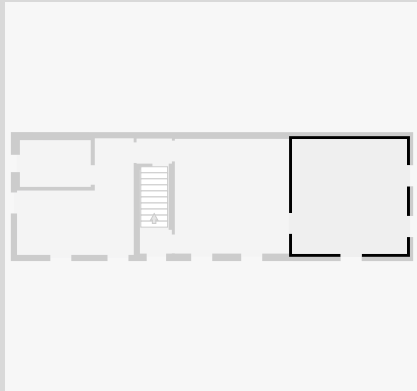
- Height: 5' 10 1/4"

THIS FLOORPLAN IS PROVIDED WITHOUT WARRANTY OF ANY KIND. NAZCA PROPERTIES
DISCLAIMS ANY WARRANTY INCLUDING, WITHOUT LIMITATION, SATISFACTORY QUALITY OR
ACCURACY OF DIMENSIONS.



Bedroom

Width: 15' 3"
Length: 15' 3 1/4"
Area: 232.94 sq ft
Perimeter: 61' 1/2"
Ceiling Height: 10' 2"



3



Hung Window

- Height: 5' 10 1/2"

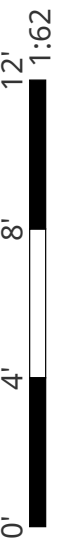
4



Hung Window

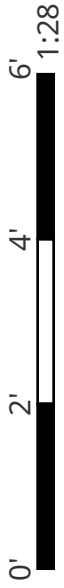
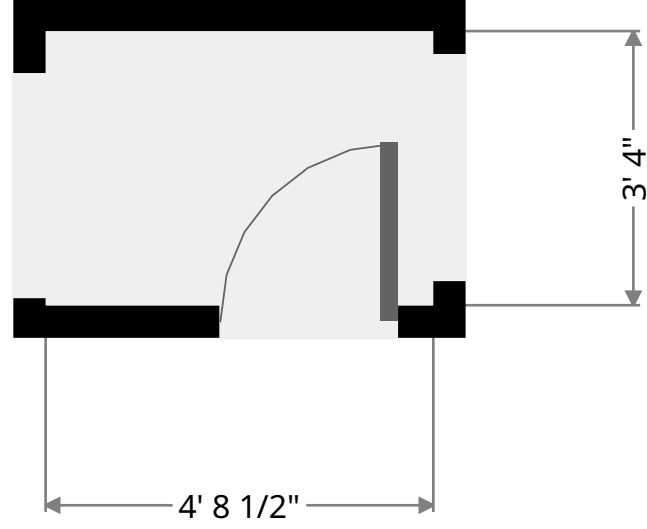
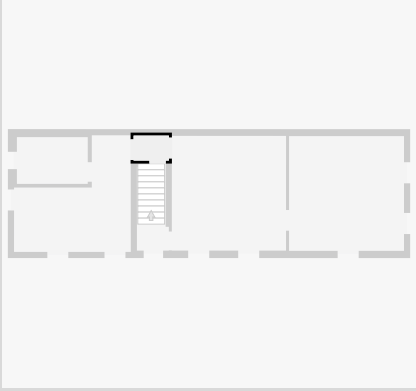
- Height: 5' 10 1/2"

THIS FLOORPLAN IS PROVIDED WITHOUT WARRANTY OF ANY KIND. NAZCA PROPERTIES
DISCLAIMS ANY WARRANTY INCLUDING, WITHOUT LIMITATION, SATISFACTORY QUALITY OR
ACCURACY OF DIMENSIONS.



Hall

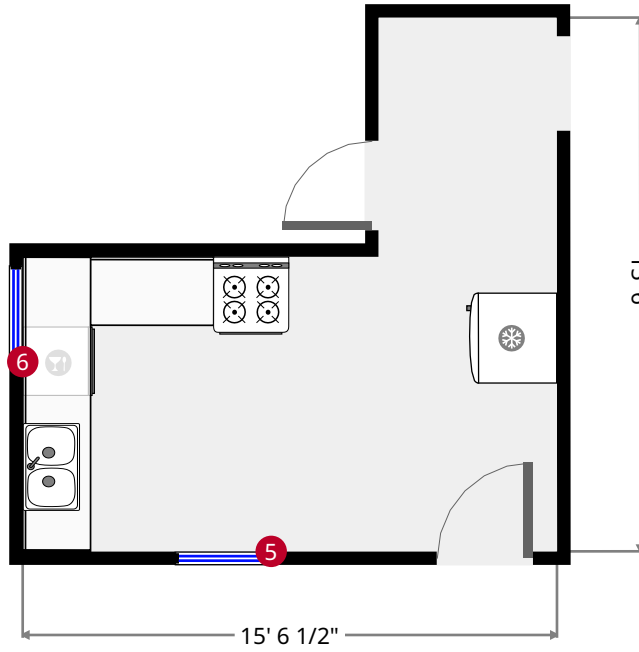
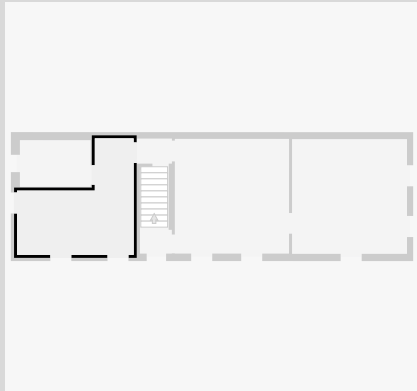
Width: 3' 4"
Length: 4' 8 1/2"
Area: 15.65 sq ft
Perimeter: 16' 3/4"
Ceiling Height: 9' 1/4"



THIS FLOORPLAN IS PROVIDED WITHOUT WARRANTY OF ANY KIND. NAZCA PROPERTIES
DISCLAIMS ANY WARRANTY INCLUDING, WITHOUT LIMITATION, SATISFACTORY QUALITY OR
ACCURACY OF DIMENSIONS.

Kitchen

Width: 15' 6"
 Length: 15' 6 1/2"
 Area: 168.59 sq ft
 Perimeter: 62' 1/4"
 Ceiling Height: 10' 1 3/4"



5



Hung Window

- Height: 5' 9 1/2"

6



Hung Window

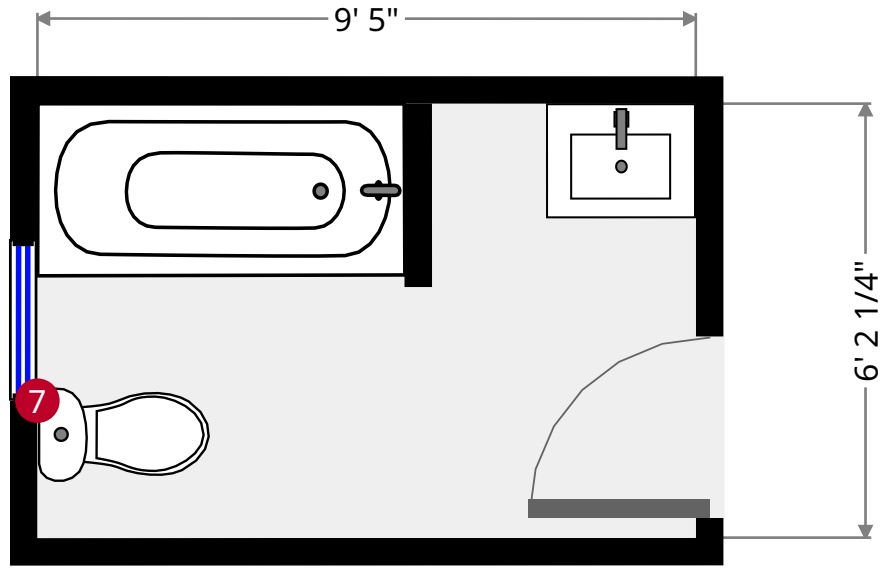
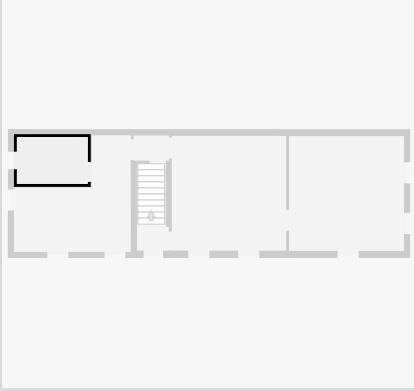
- Height: 5' 9 1/2"

THIS FLOORPLAN IS PROVIDED WITHOUT WARRANTY OF ANY KIND. NAZCA PROPERTIES
 DISCLAIMS ANY WARRANTY INCLUDING, WITHOUT LIMITATION, SATISFACTORY QUALITY OR
 ACCURACY OF DIMENSIONS.



Bathroom

Width: 6' 2 1/4"
Length: 9' 5"
Area: 58.48 sq ft
Perimeter: 31' 3"
Ceiling Height: 10' 1 1/4"



7



Hung Window

- Height: 4' 3 1/2"

THIS FLOORPLAN IS PROVIDED WITHOUT WARRANTY OF ANY KIND. NAZCA PROPERTIES
DISCLAIMS ANY WARRANTY INCLUDING, WITHOUT LIMITATION, SATISFACTORY QUALITY OR
ACCURACY OF DIMENSIONS.



23 W Daniels St.

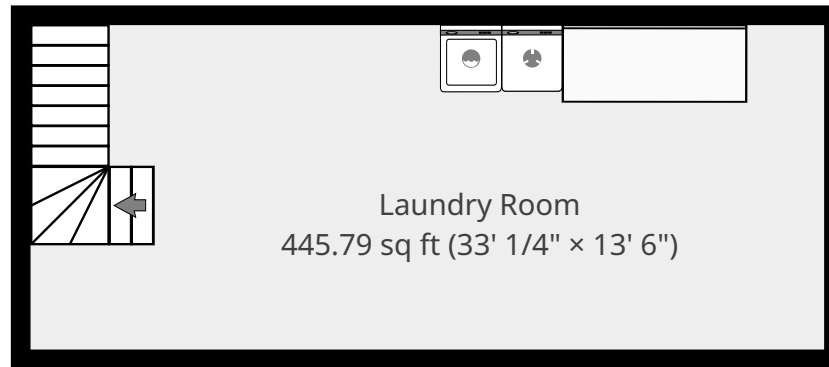
Basement



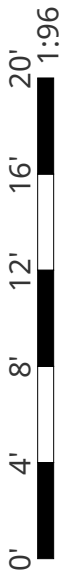
Nazca Properties
manager@nazcaproperties.com
513-535-2154

Statistics

Area: 1742 sq ft
3 Floors
3 Bedrooms
1 Bathroom

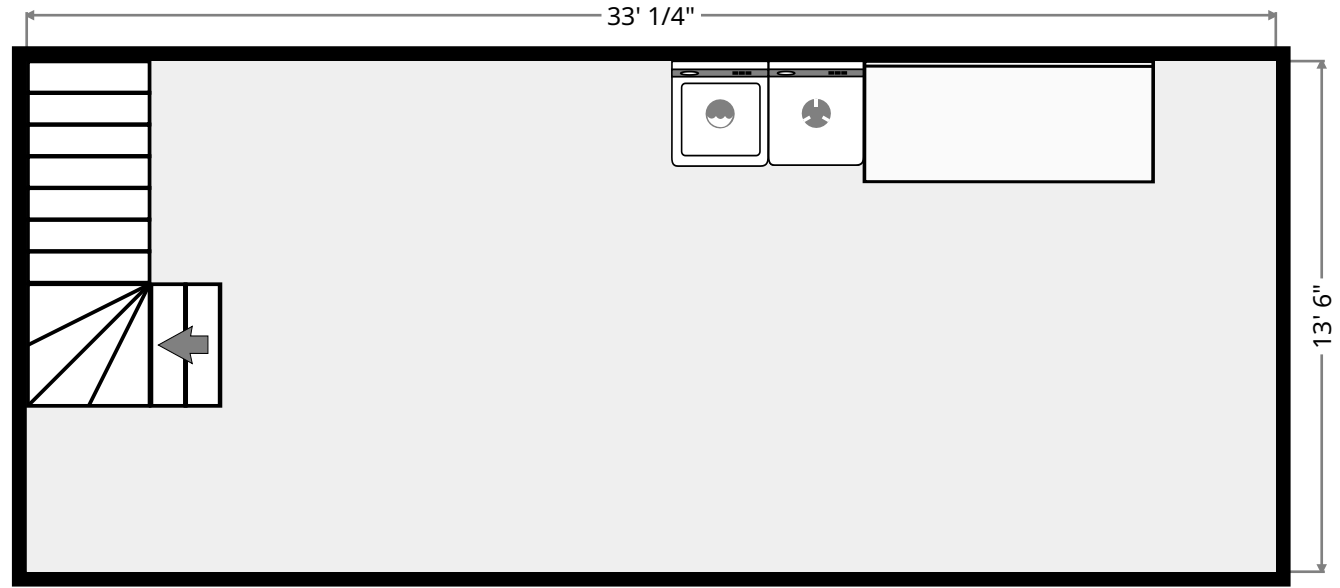
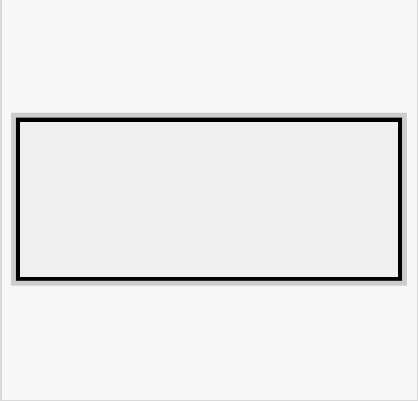


THIS FLOORPLAN IS PROVIDED WITHOUT WARRANTY OF ANY KIND. NAZCA PROPERTIES
DISCLAIMS ANY WARRANTY INCLUDING, WITHOUT LIMITATION, SATISFACTORY QUALITY OR
ACCURACY OF DIMENSIONS.



Laundry Room

Width: 13' 6"
Length: 33' 1/4"
Area: 445.79 sq ft
Perimeter: 93' 1/2"
Ceiling Height: 9' 8 3/4"



THIS FLOORPLAN IS PROVIDED WITHOUT WARRANTY OF ANY KIND. NAZCA PROPERTIES
DISCLAIMS ANY WARRANTY INCLUDING, WITHOUT LIMITATION, SATISFACTORY QUALITY OR
ACCURACY OF DIMENSIONS.



23 W Daniels St.

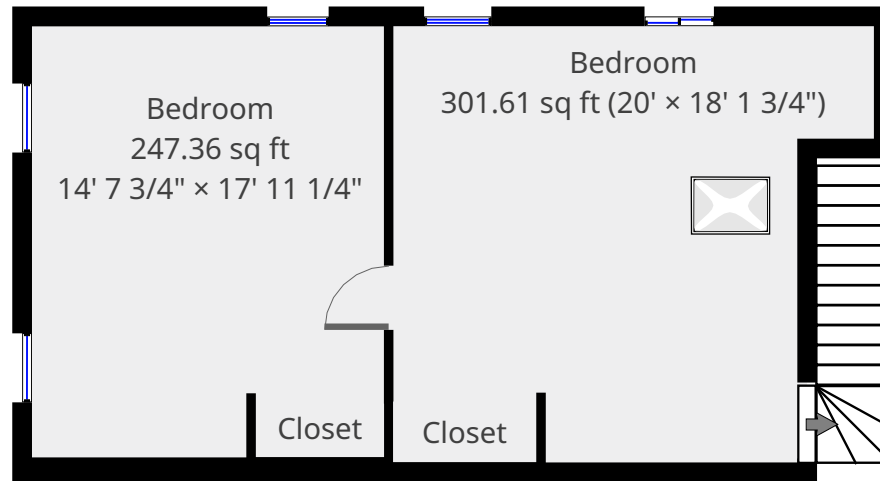
2nd Floor



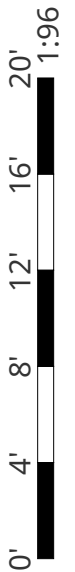
Nazca Properties
manager@nazcaproperties.com
513-535-2154

Statistics

Area: 1742 sq ft
3 Floors
3 Bedrooms
1 Bathroom

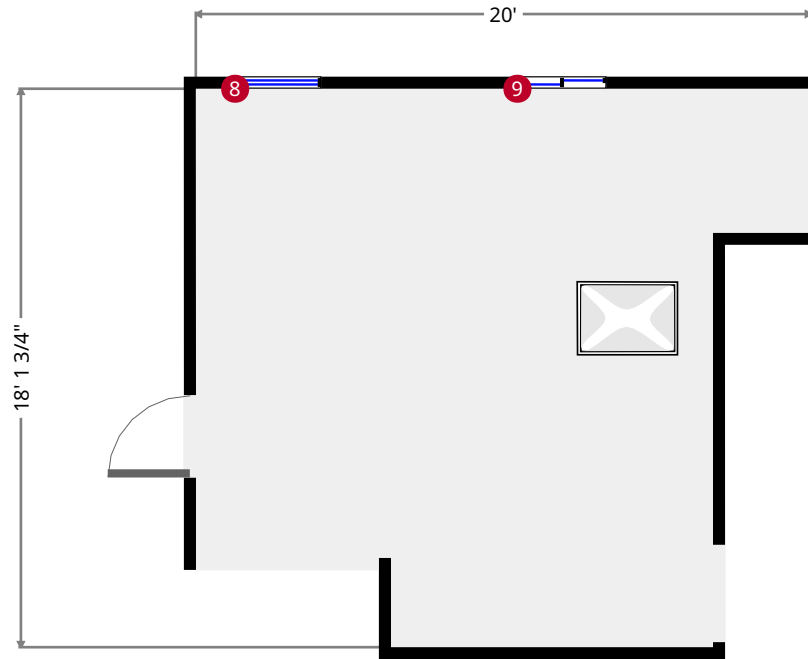
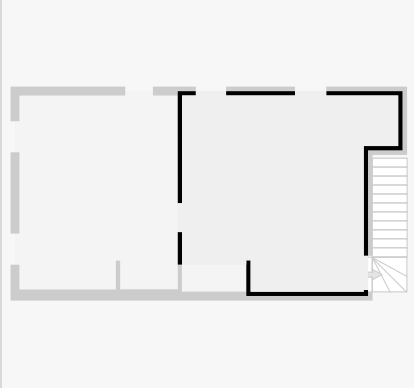


THIS FLOORPLAN IS PROVIDED WITHOUT WARRANTY OF ANY KIND. NAZCA PROPERTIES
DISCLAIMS ANY WARRANTY INCLUDING, WITHOUT LIMITATION, SATISFACTORY QUALITY OR
ACCURACY OF DIMENSIONS.



Bedroom

Width: 18' 1 3/4"
 Length: 20'
 Area: 301.61 sq ft
 Perimeter: 76' 3 1/2"
 Ceiling Height: 8' 9 1/4"



8



Hung Window

- Height: 4' 5"

9



Sliding Window

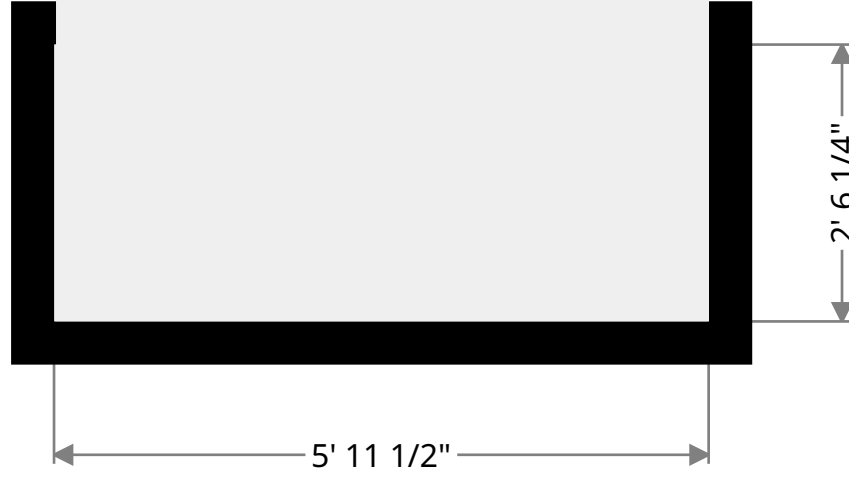
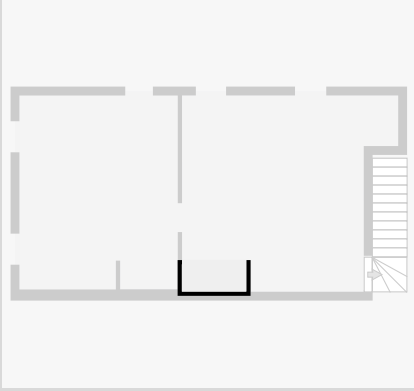
- Height: 1' 7 1/2"

THIS FLOORPLAN IS PROVIDED WITHOUT WARRANTY OF ANY KIND. NAZCA PROPERTIES
 DISCLAIMS ANY WARRANTY INCLUDING, WITHOUT LIMITATION, SATISFACTORY QUALITY OR
 ACCURACY OF DIMENSIONS.



Closet

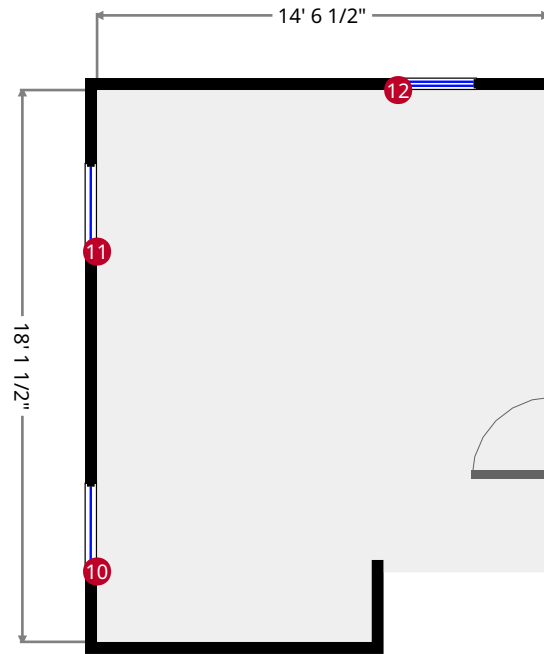
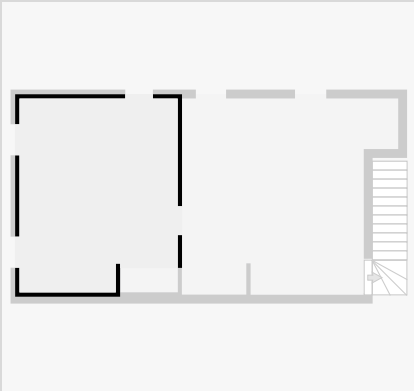
Width: 2' 6 1/4"
Length: 5' 11 1/2"
Area: 15.01 sq ft
Perimeter: 16' 11 1/2"
Ceiling Height: 6' 11 3/4"



THIS FLOORPLAN IS PROVIDED WITHOUT WARRANTY OF ANY KIND. NAZCA PROPERTIES
DISCLAIMS ANY WARRANTY INCLUDING, WITHOUT LIMITATION, SATISFACTORY QUALITY OR
ACCURACY OF DIMENSIONS.

Bedroom

Width: 14' 7 3/4"
 Length: 17' 11 1/4"
 Area: 247.36 sq ft
 Perimeter: 65' 2"
 Ceiling Height: 8' 8 1/4"



10



Awning Window

- Height: 1' 4"

11



Awning Window

- Height: 1' 4"

12



Hung Window

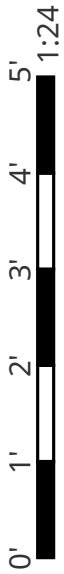
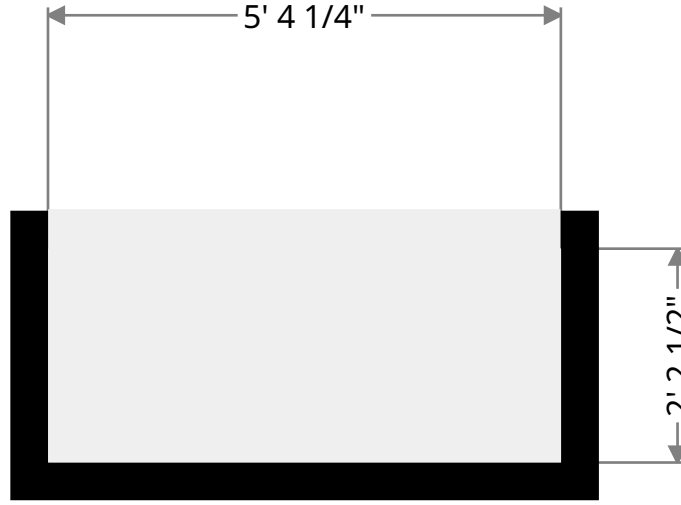
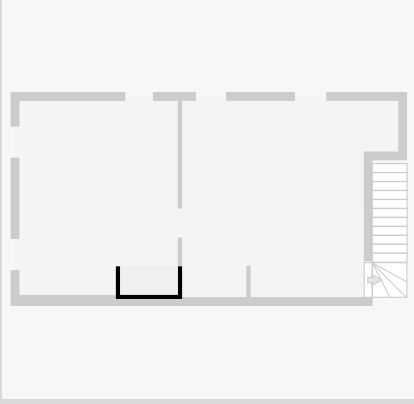
- Height: 3' 11 1/4"

THIS FLOORPLAN IS PROVIDED WITHOUT WARRANTY OF ANY KIND. NAZCA PROPERTIES
 DISCLAIMS ANY WARRANTY INCLUDING, WITHOUT LIMITATION, SATISFACTORY QUALITY OR
 ACCURACY OF DIMENSIONS.



Closet

Width: 2' 2 1/2"
Length: 5' 4 1/4"
Area: 11.87 sq ft
Perimeter: 15' 1 1/2"



THIS FLOORPLAN IS PROVIDED WITHOUT WARRANTY OF ANY KIND. NAZCA PROPERTIES
DISCLAIMS ANY WARRANTY INCLUDING, WITHOUT LIMITATION, SATISFACTORY QUALITY OR
ACCURACY OF DIMENSIONS.