

2404 W.  
Clifton Ave. ...

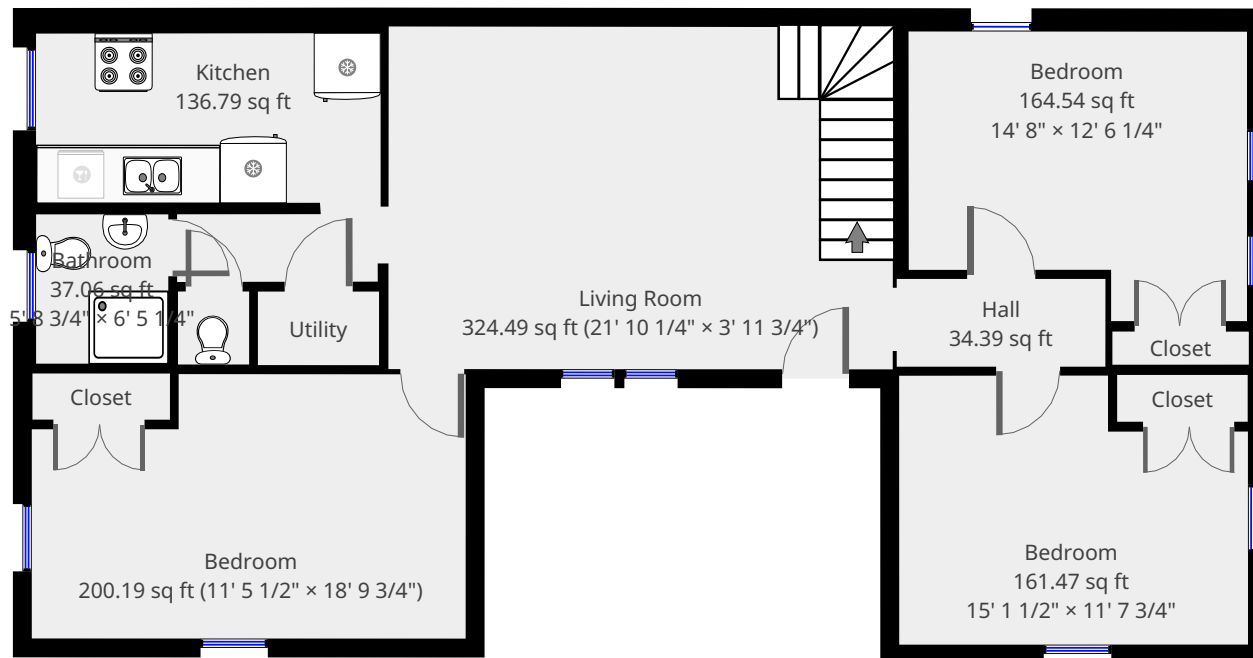
2nd Floor



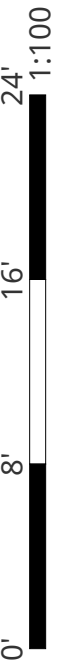
**Nazca Properties**  
manager@nazcaproperties.com  
513-535-2154

## Statistics

Area: 2077 sq ft  
2 Floors  
6 Bedrooms  
3 Bathrooms

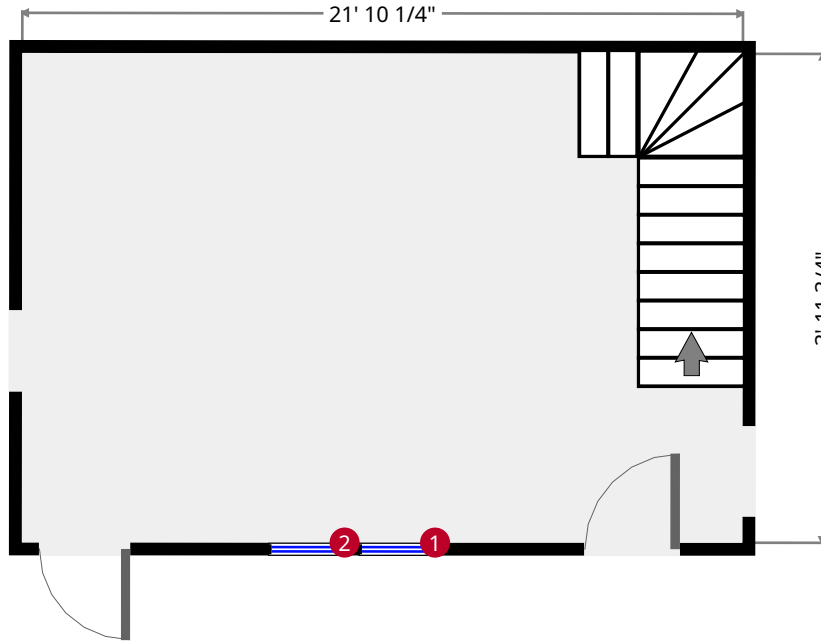
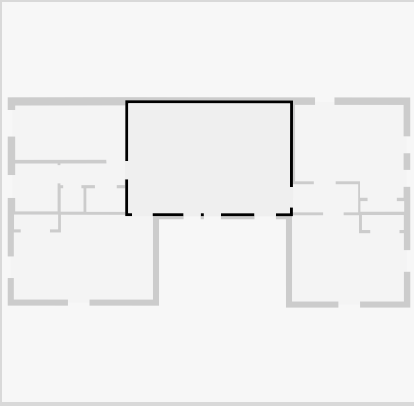


THIS FLOORPLAN IS PROVIDED WITHOUT WARRANTY OF ANY KIND. NAZCA PROPERTIES  
DISCLAIMS ANY WARRANTY INCLUDING, WITHOUT LIMITATION, SATISFACTORY QUALITY OR  
ACCURACY OF DIMENSIONS.



# Living Room

Width: 3' 11 3/4"  
Length: 21' 10 1/4"  
Area: 324.49 sq ft  
Perimeter: 73' 5"



1



Hung Window

- Height: 6' 3 3/4"

2



Hung Window

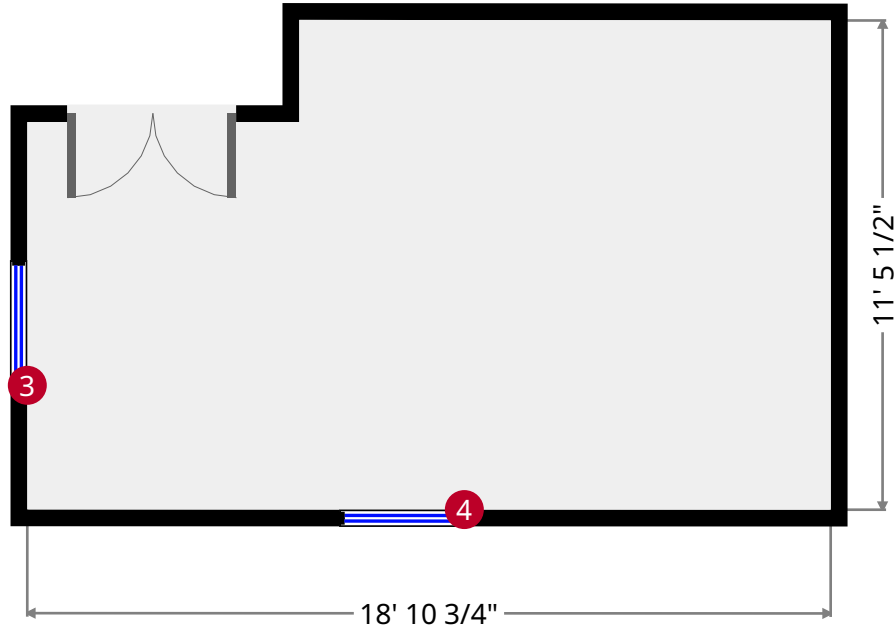
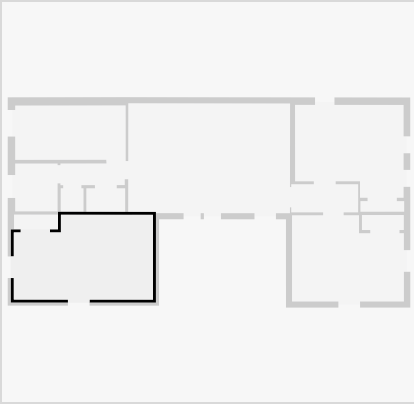
- Height: 6' 3 3/4"

THIS FLOORPLAN IS PROVIDED WITHOUT WARRANTY OF ANY KIND. NAZCA PROPERTIES  
DISCLAIMS ANY WARRANTY INCLUDING, WITHOUT LIMITATION, SATISFACTORY QUALITY OR  
ACCURACY OF DIMENSIONS.



# Bedroom

Width: 11' 5 1/2"  
Length: 18' 9 3/4"  
Area: 200.19 sq ft  
Perimeter: 60' 6 1/4"



3



Hung Window

- Height: 5' 11 1/4"

4



Hung Window

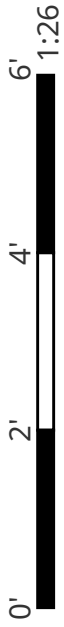
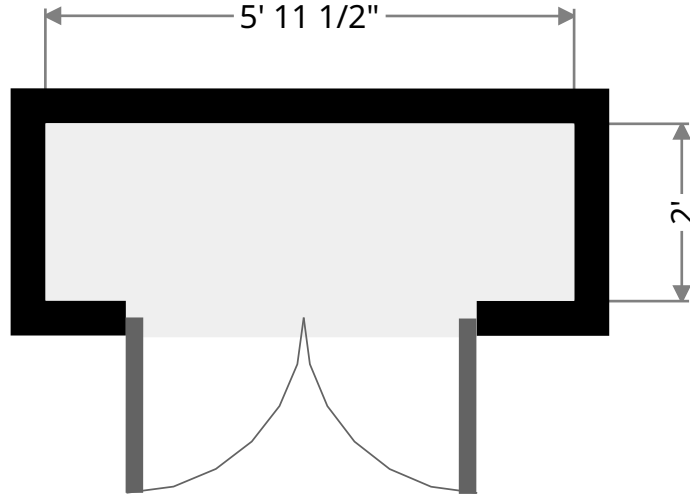
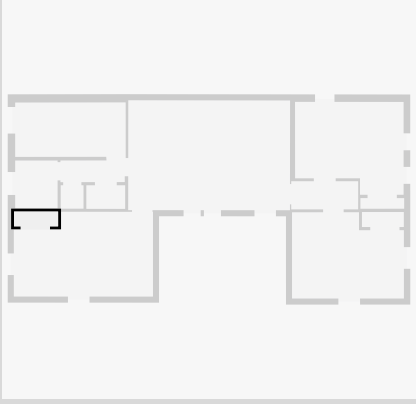
- Height: 5' 11 1/4"

THIS FLOORPLAN IS PROVIDED WITHOUT WARRANTY OF ANY KIND. NAZCA PROPERTIES  
DISCLAIMS ANY WARRANTY INCLUDING, WITHOUT LIMITATION, SATISFACTORY QUALITY OR  
ACCURACY OF DIMENSIONS.



# Closet

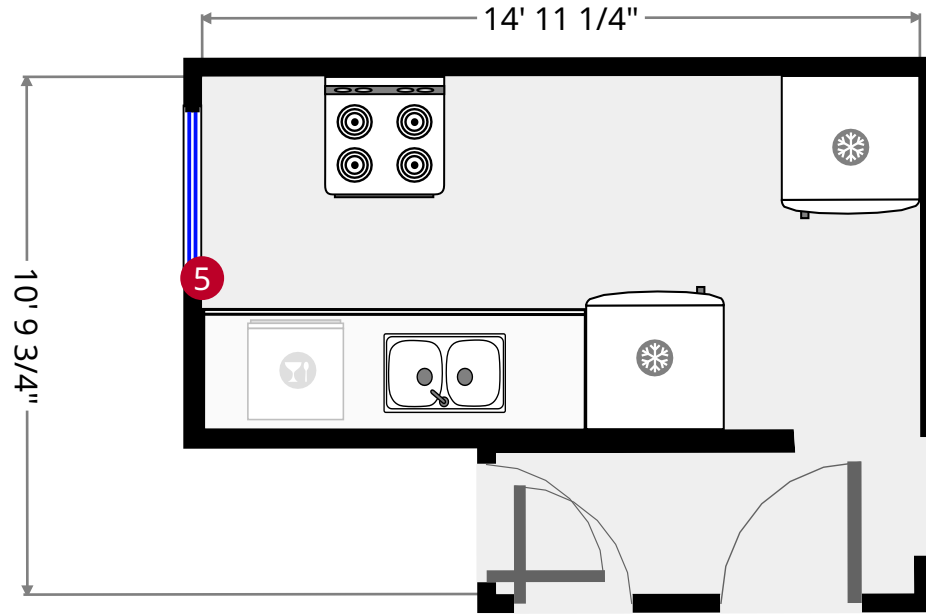
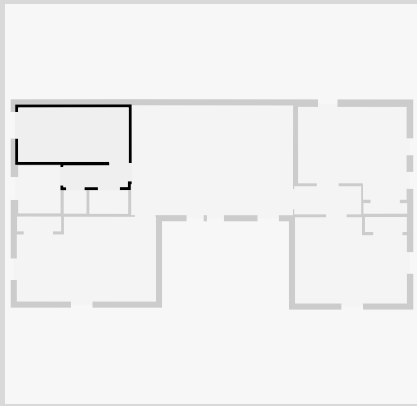
Width: 2'  
Length: 5' 11 1/2"  
Area: 11.90 sq ft  
Perimeter: 15' 11"



THIS FLOORPLAN IS PROVIDED WITHOUT WARRANTY OF ANY KIND. NAZCA PROPERTIES  
DISCLAIMS ANY WARRANTY INCLUDING, WITHOUT LIMITATION, SATISFACTORY QUALITY OR  
ACCURACY OF DIMENSIONS.

# Kitchen

Width: 10' 9 3/4"  
Length: 14' 11 1/4"  
Area: 136.79 sq ft  
Perimeter: 63' 10"



5



Hung Window

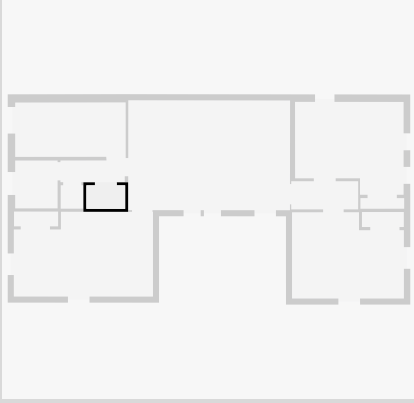
- Height: 6' 6"

THIS FLOORPLAN IS PROVIDED WITHOUT WARRANTY OF ANY KIND. NAZCA PROPERTIES DISCLAIMS ANY WARRANTY INCLUDING, WITHOUT LIMITATION, SATISFACTORY QUALITY OR ACCURACY OF DIMENSIONS.



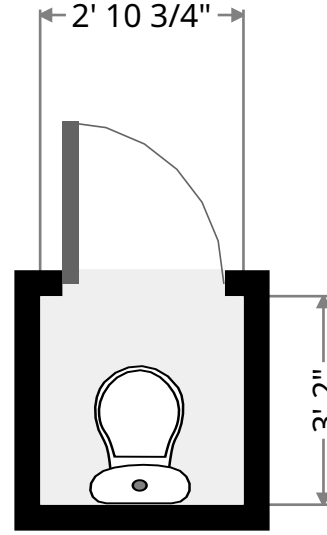
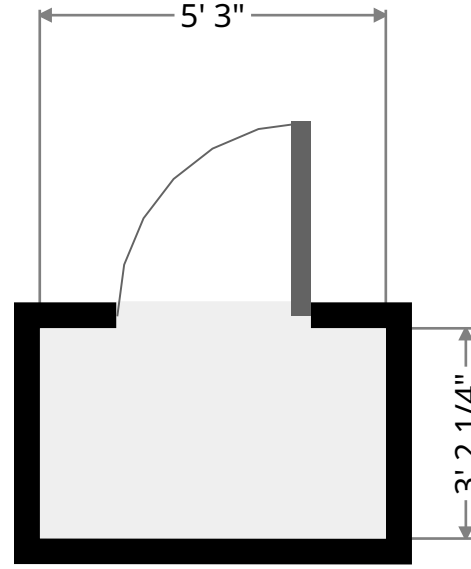
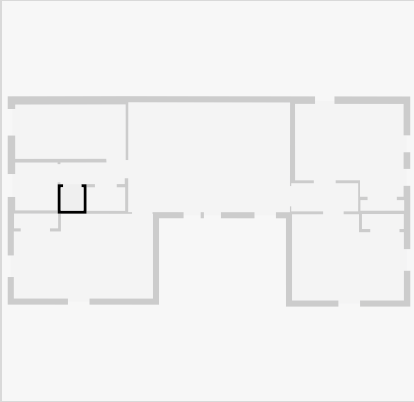
## Utility

Width: 3' 2 1/4"  
Length: 5' 3"  
Area: 16.73 sq ft  
Perimeter: 16' 10 1/2"

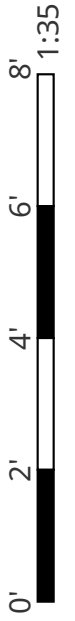


## Water Closet

Width: 3' 1"  
Length: 3' 2"  
Area: 9.75 sq ft  
Perimeter: 12' 6"

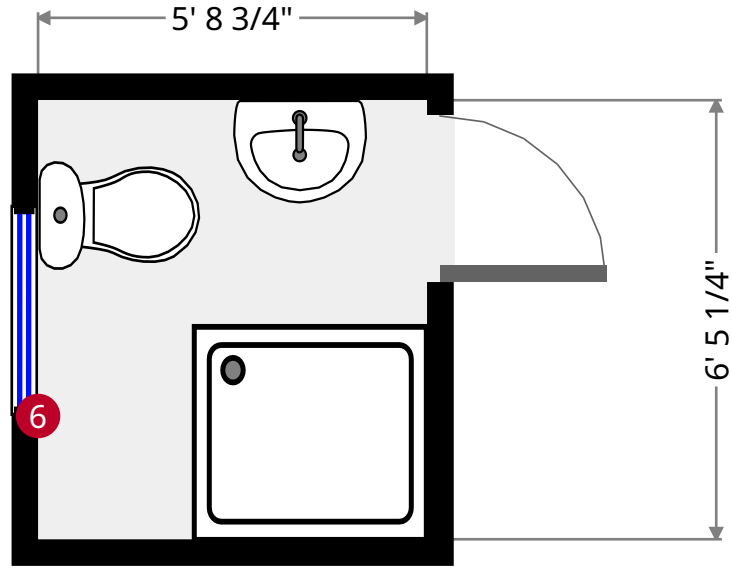
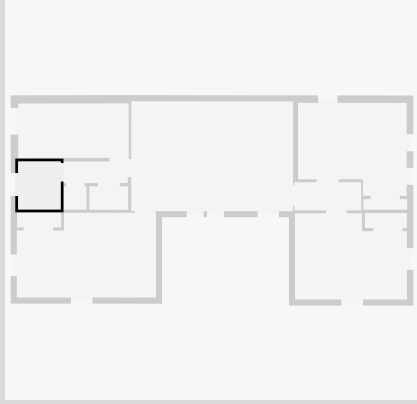


THIS FLOORPLAN IS PROVIDED WITHOUT WARRANTY OF ANY KIND. NAZCA PROPERTIES  
DISCLAIMS ANY WARRANTY INCLUDING, WITHOUT LIMITATION, SATISFACTORY QUALITY OR  
ACCURACY OF DIMENSIONS.



# Bathroom

Width: 5' 8 3/4"  
Length: 6' 5 1/4"  
Area: 37.06 sq ft  
Perimeter: 24' 4 3/4"



6



Hung Window

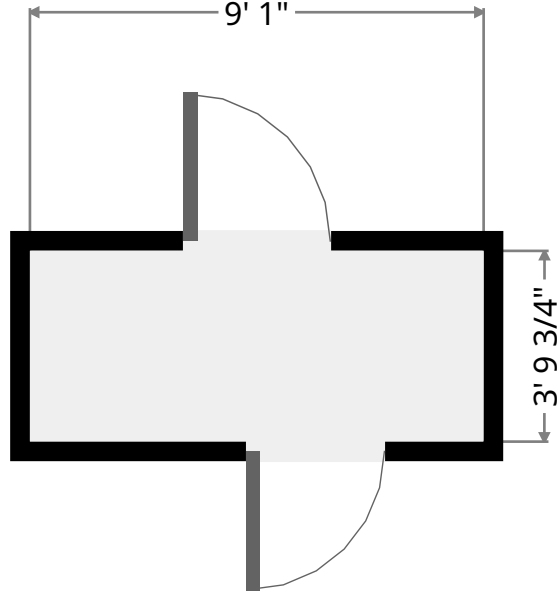
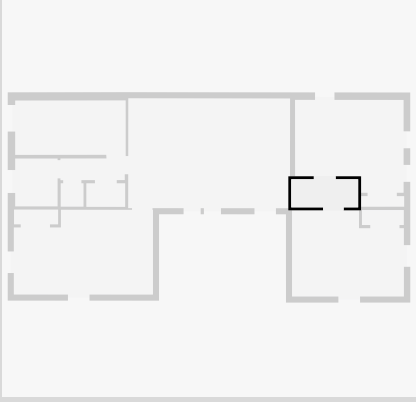
- Height: 6' 5 1/4"

THIS FLOORPLAN IS PROVIDED WITHOUT WARRANTY OF ANY KIND. NAZCA PROPERTIES  
DISCLAIMS ANY WARRANTY INCLUDING, WITHOUT LIMITATION, SATISFACTORY QUALITY OR  
ACCURACY OF DIMENSIONS.



# Hall

Width: 3' 9 3/4"  
Length: 9' 1"  
Area: 34.39 sq ft  
Perimeter: 25' 8 1/4"

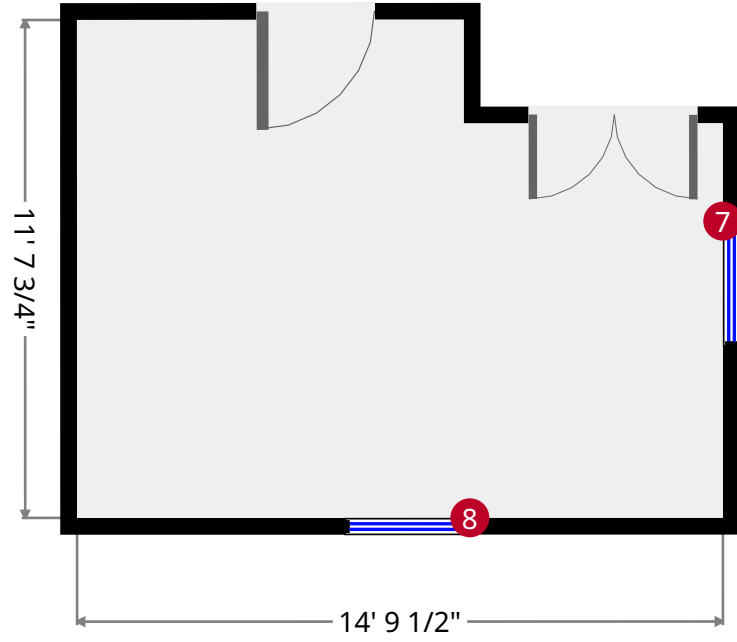
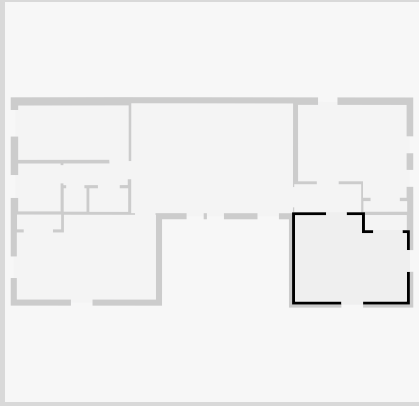


THIS FLOORPLAN IS PROVIDED WITHOUT WARRANTY OF ANY KIND. NAZCA PROPERTIES  
DISCLAIMS ANY WARRANTY INCLUDING, WITHOUT LIMITATION, SATISFACTORY QUALITY OR  
ACCURACY OF DIMENSIONS.



# Bedroom

Width: 11' 7 3/4"  
 Length: 15' 1 1/2"  
 Area: 161.47 sq ft  
 Perimeter: 53' 6 1/2"



7



Hung Window

- Height: 5' 9 1/2"

8



Hung Window

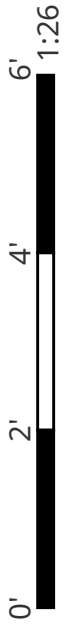
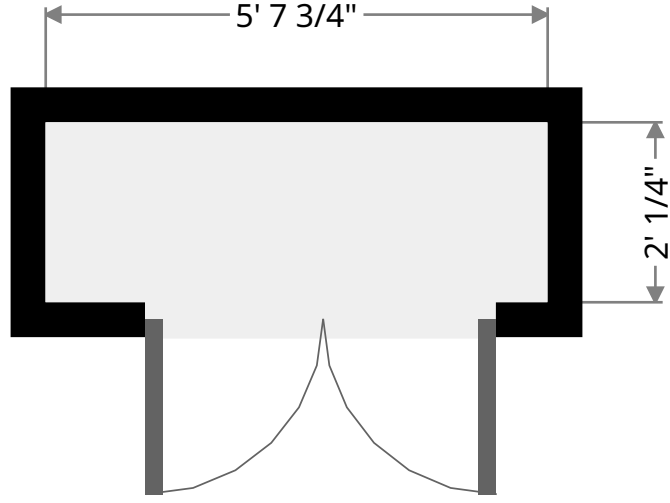
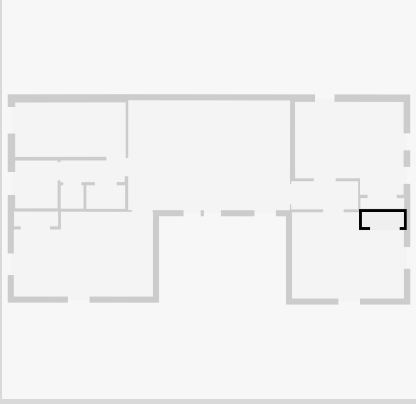
- Height: 5' 9 1/2"

THIS FLOORPLAN IS PROVIDED WITHOUT WARRANTY OF ANY KIND. NAZCA PROPERTIES  
 DISCLAIMS ANY WARRANTY INCLUDING, WITHOUT LIMITATION, SATISFACTORY QUALITY OR  
 ACCURACY OF DIMENSIONS.



# Closet

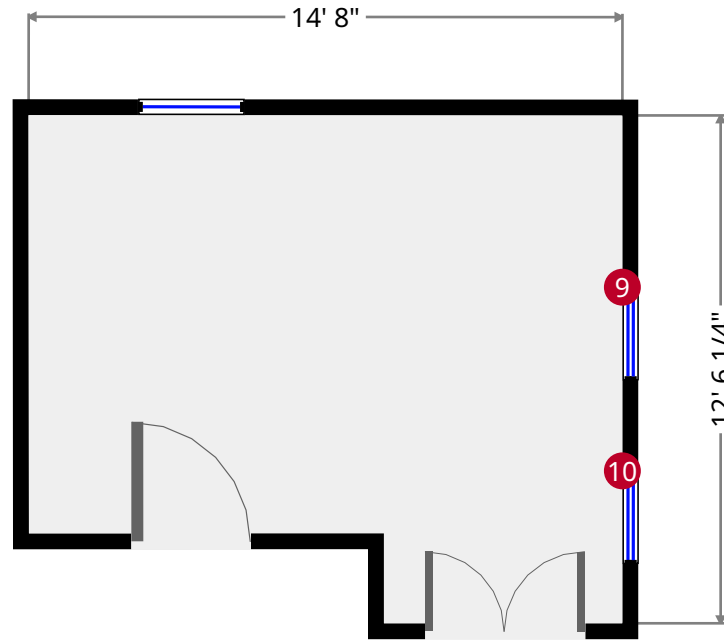
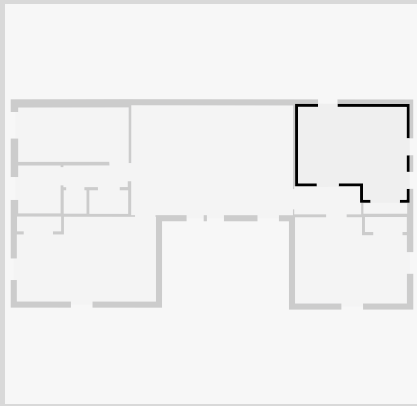
Width: 2' 1/4"  
Length: 5' 7 3/4"  
Area: 11.47 sq ft  
Perimeter: 15' 4 1/2"



THIS FLOORPLAN IS PROVIDED WITHOUT WARRANTY OF ANY KIND. NAZCA PROPERTIES  
DISCLAIMS ANY WARRANTY INCLUDING, WITHOUT LIMITATION, SATISFACTORY QUALITY OR  
ACCURACY OF DIMENSIONS.

# Bedroom

Width: 12' 6 1/4"  
 Length: 14' 8"  
 Area: 164.54 sq ft  
 Perimeter: 54' 5 1/4"



9



Hung Window

- Height: 5' 5"

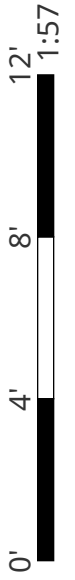
10



Hung Window

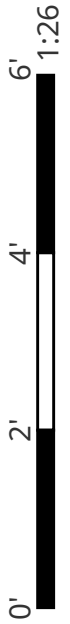
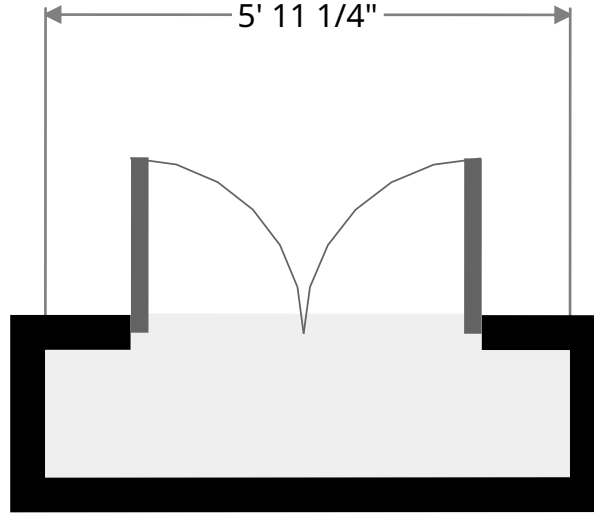
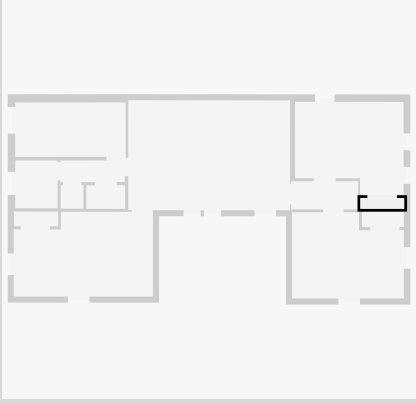
- Height: 5' 5"

THIS FLOORPLAN IS PROVIDED WITHOUT WARRANTY OF ANY KIND. NAZCA PROPERTIES  
 DISCLAIMS ANY WARRANTY INCLUDING, WITHOUT LIMITATION, SATISFACTORY QUALITY OR  
 ACCURACY OF DIMENSIONS.



# Closet

Width: 1' 4 3/4"  
Length: 5' 11 1/4"  
Area: 8.48 sq ft  
Perimeter: 14' 8 1/4"



THIS FLOORPLAN IS PROVIDED WITHOUT WARRANTY OF ANY KIND. NAZCA PROPERTIES  
DISCLAIMS ANY WARRANTY INCLUDING, WITHOUT LIMITATION, SATISFACTORY QUALITY OR  
ACCURACY OF DIMENSIONS.

2404 W.  
Clifton Ave. ...

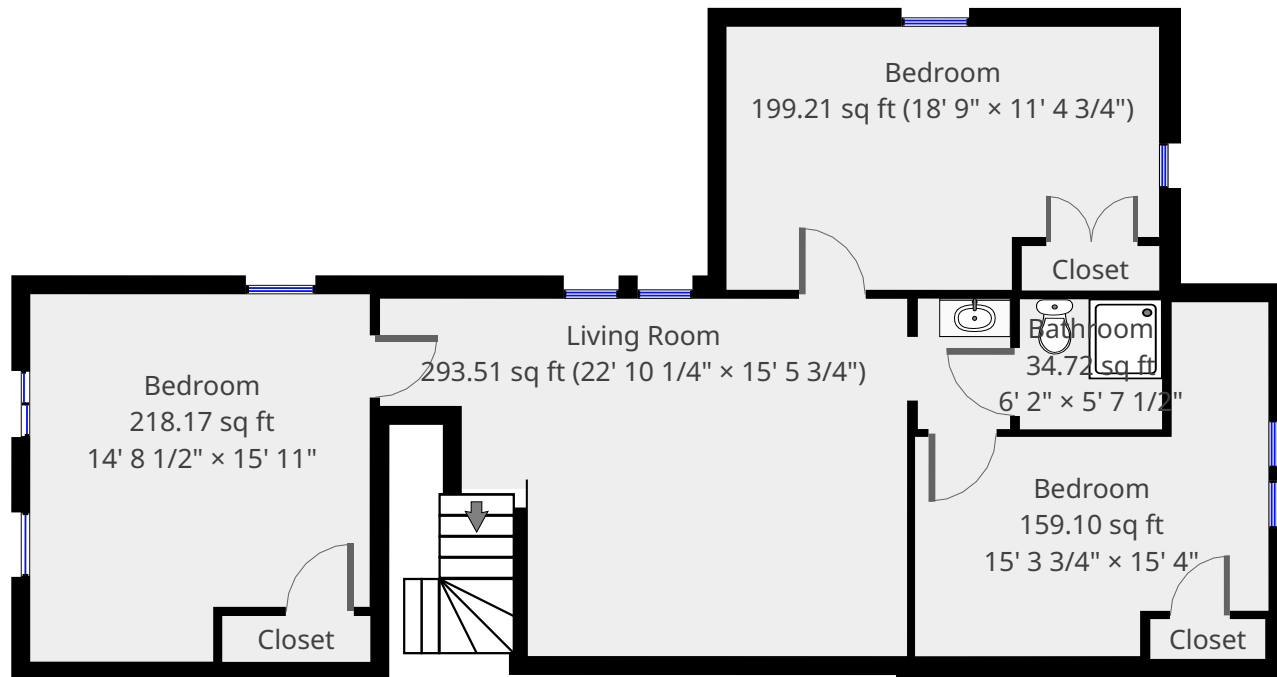
3rd Floor



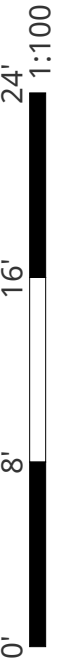
**Nazca Properties**  
manager@nazcaproperties.com  
513-535-2154

## Statistics

Area: 2077 sq ft  
2 Floors  
6 Bedrooms  
3 Bathrooms

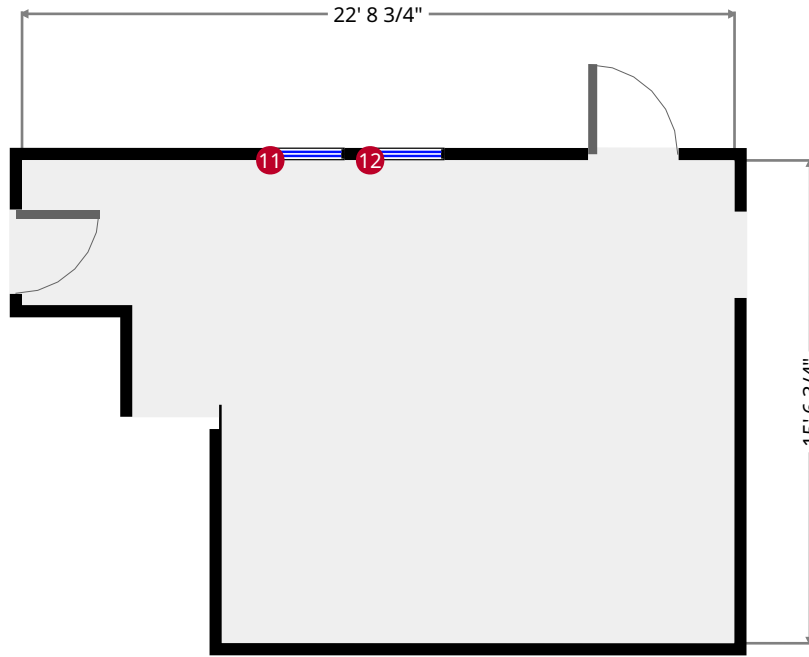
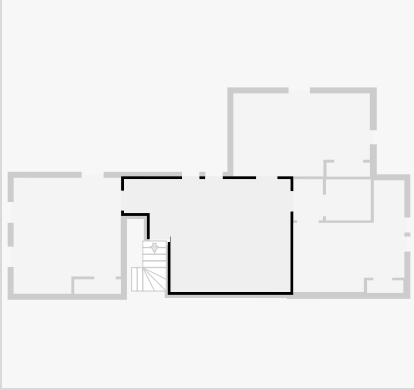


THIS FLOORPLAN IS PROVIDED WITHOUT WARRANTY OF ANY KIND. NAZCA PROPERTIES  
DISCLAIMS ANY WARRANTY INCLUDING, WITHOUT LIMITATION, SATISFACTORY QUALITY OR  
ACCURACY OF DIMENSIONS.



# Living Room

Width: 15' 5 3/4"  
 Length: 22' 10 1/4"  
 Area: 293.51 sq ft  
 Perimeter: 76' 8"  
 Ceiling Height: 9' 11 1/2"



11



Hung Window

- Height: 4' 4 1/2"

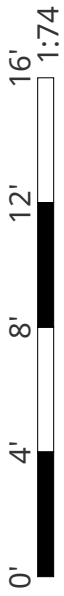
12



Hung Window

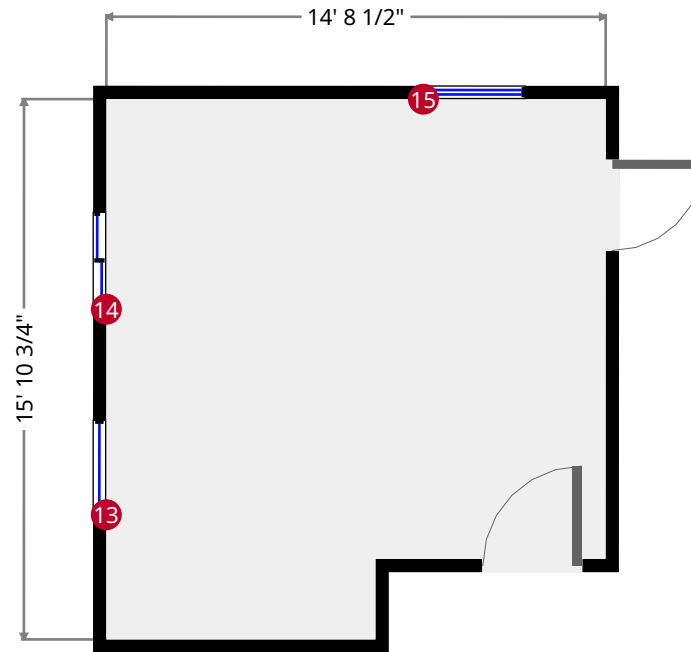
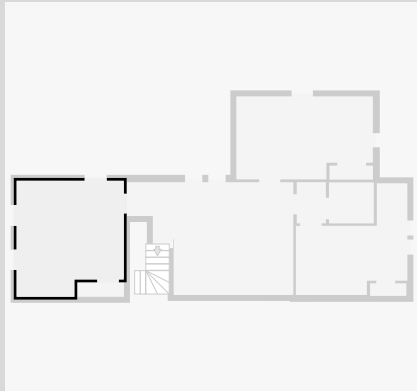
- Height: 4' 4 1/2"

THIS FLOORPLAN IS PROVIDED WITHOUT WARRANTY OF ANY KIND. MAZCA PROPERTIES  
 DISCLAIMS ANY WARRANTY INCLUDING, WITHOUT LIMITATION, SATISFACTORY QUALITY OR  
 ACCURACY OF DIMENSIONS.



# Bedroom

Width: 14' 8 1/2"  
 Length: 15' 11"  
 Area: 218.17 sq ft  
 Perimeter: 61' 3 1/4"  
 Ceiling Height: 7' 1 3/4"



- 13

Fixed Window

- Height: 1' 8 1/4"
- 14

Sliding Window

- Height: 2' 1/4"
- 15

Hung Window

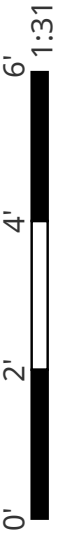
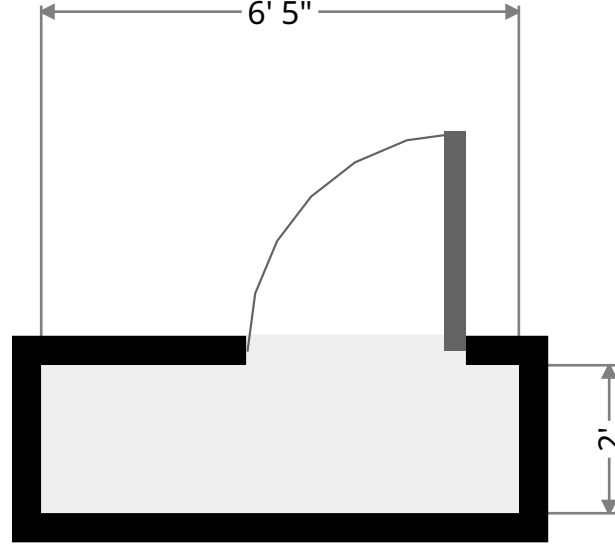
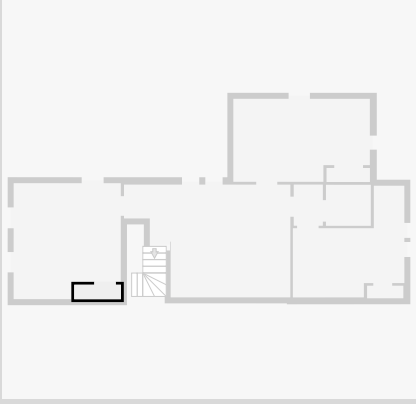
- Height: 3' 5 1/2"

THIS FLOORPLAN IS PROVIDED WITHOUT WARRANTY OF ANY KIND. NAZCA PROPERTIES DISCLAIMS ANY WARRANTY INCLUDING, WITHOUT LIMITATION, SATISFACTORY QUALITY OR ACCURACY OF DIMENSIONS.



# Closet

Width: 2'  
Length: 6' 5"  
Area: 12.76 sq ft  
Perimeter: 16' 9 3/4"

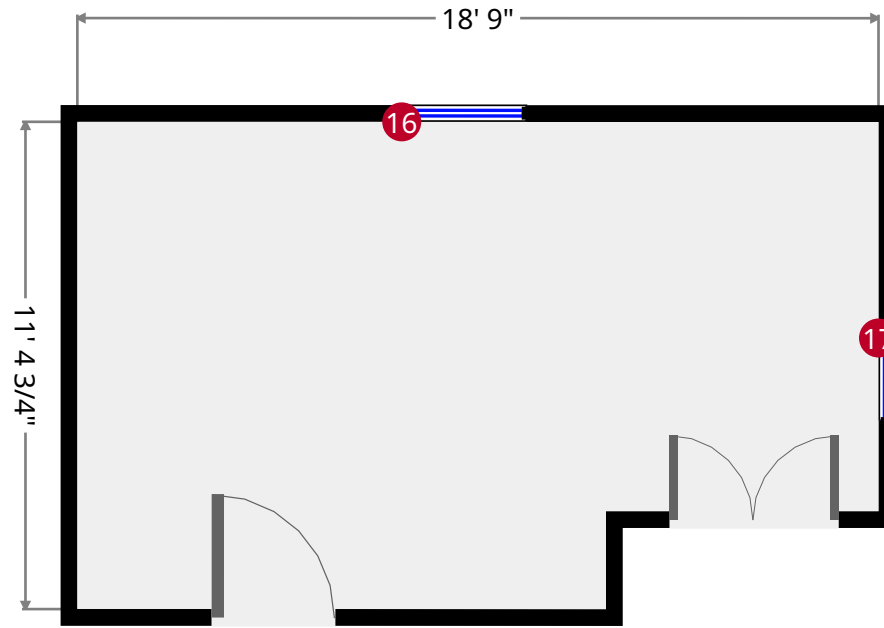
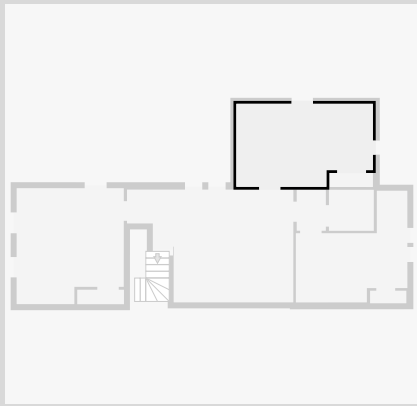


THIS FLOORPLAN IS PROVIDED WITHOUT WARRANTY OF ANY KIND. NAZCA PROPERTIES  
DISCLAIMS ANY WARRANTY INCLUDING, WITHOUT LIMITATION, SATISFACTORY QUALITY OR  
ACCURACY OF DIMENSIONS.



# Bedroom

Width: 11' 4 3/4"  
 Length: 18' 9"  
 Area: 199.21 sq ft  
 Perimeter: 60' 3 3/4"



16



Hung Window

- Height: 4' 10 3/4"

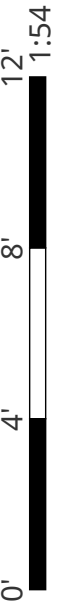
17



Hung Window

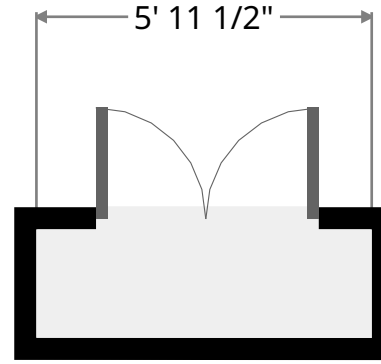
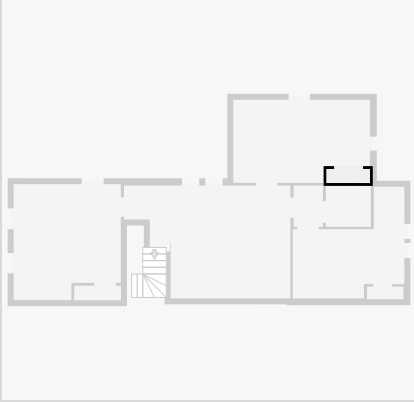
- Height: 4' 10 3/4"

THIS FLOORPLAN IS PROVIDED WITHOUT WARRANTY OF ANY KIND. NAZCA PROPERTIES  
 DISCLAIMS ANY WARRANTY INCLUDING, WITHOUT LIMITATION, SATISFACTORY QUALITY OR  
 ACCURACY OF DIMENSIONS.



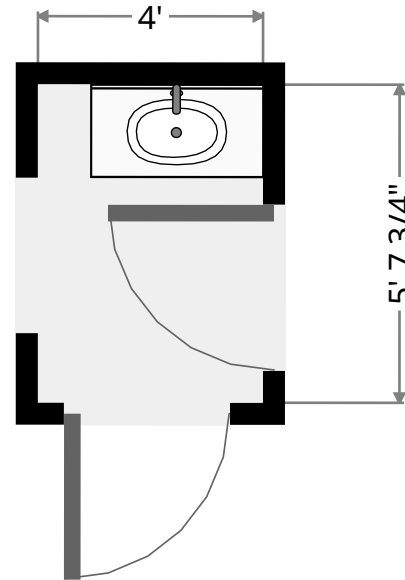
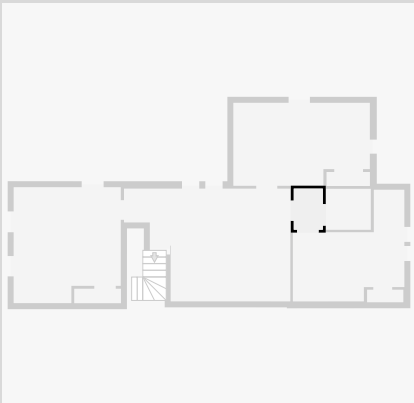
## Closet

Width: 1' 11 1/4"  
Length: 5' 11 1/2"  
Area: 11.48 sq ft  
Perimeter: 15' 9 1/4"

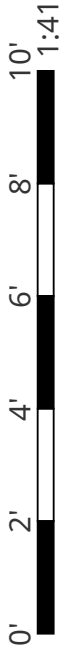


## Bathroom

Width: 4'  
Length: 5' 7 3/4"  
Area: 22.60 sq ft  
Perimeter: 19' 3 1/2"

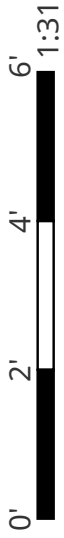
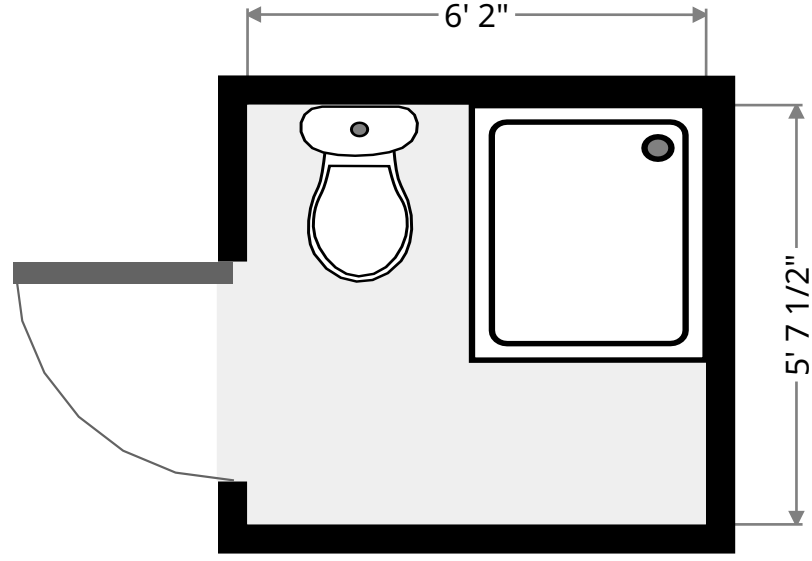
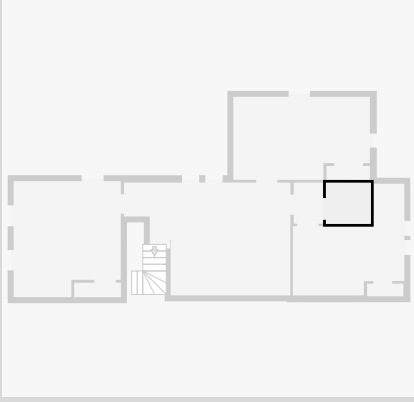


THIS FLOORPLAN IS PROVIDED WITHOUT WARRANTY OF ANY KIND. NAZCA PROPERTIES  
DISCLAIMS ANY WARRANTY INCLUDING, WITHOUT LIMITATION, SATISFACTORY QUALITY OR  
ACCURACY OF DIMENSIONS.



# Bathroom

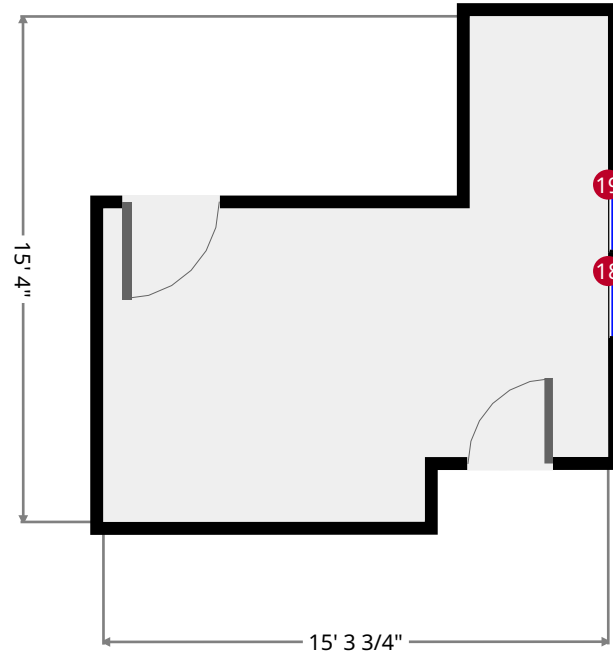
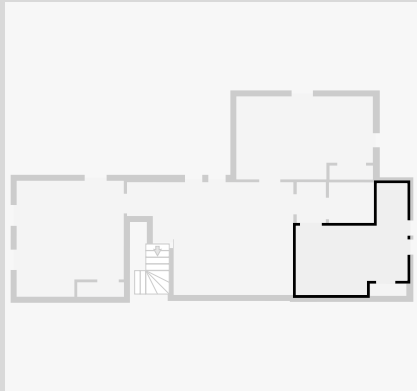
Width: 5' 7 1/2"  
Length: 6' 2"  
Area: 34.72 sq ft  
Perimeter: 23' 7"



THIS FLOORPLAN IS PROVIDED WITHOUT WARRANTY OF ANY KIND. NAZCA PROPERTIES  
DISCLAIMS ANY WARRANTY INCLUDING, WITHOUT LIMITATION, SATISFACTORY QUALITY OR  
ACCURACY OF DIMENSIONS.

# Bedroom

Width: 15' 3 3/4"  
 Length: 15' 4"  
 Area: 159.10 sq ft  
 Perimeter: 61' 3 3/4"  
 Ceiling Height: 9' 1 1/2"



18



Hung Window

- Height: 5' 7 1/2"

19



Hung Window

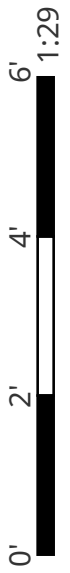
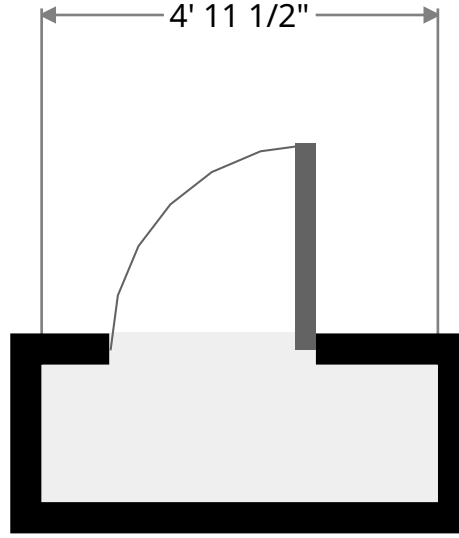
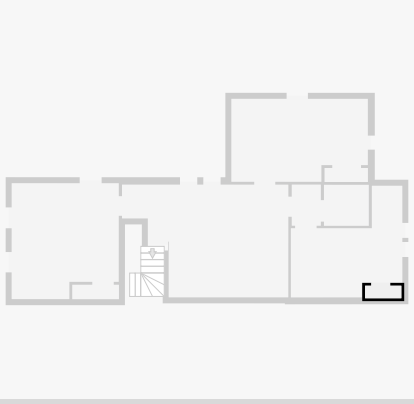
- Height: 5' 7 1/2"

THIS FLOORPLAN IS PROVIDED WITHOUT WARRANTY OF ANY KIND. NAZCA PROPERTIES  
 DISCLAIMS ANY WARRANTY INCLUDING, WITHOUT LIMITATION, SATISFACTORY QUALITY OR  
 ACCURACY OF DIMENSIONS.



# Closet

Width: 1' 8 3/4"  
Length: 4' 11 1/2"  
Area: 8.59 sq ft  
Perimeter: 13' 5"



THIS FLOORPLAN IS PROVIDED WITHOUT WARRANTY OF ANY KIND. NAZCA PROPERTIES  
DISCLAIMS ANY WARRANTY INCLUDING, WITHOUT LIMITATION, SATISFACTORY QUALITY OR  
ACCURACY OF DIMENSIONS.