

2701 Euclid Ave. Apt. 1



270,



Nazca Properties

manager@nazcaproperties.com

513-535-2154

Statistics

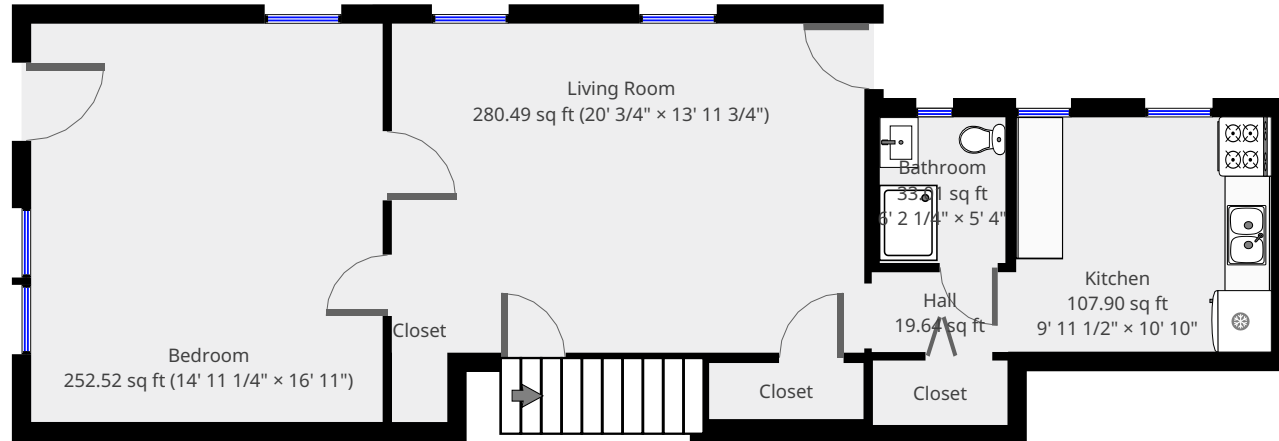
Area: 1016 sq ft

2 Floors

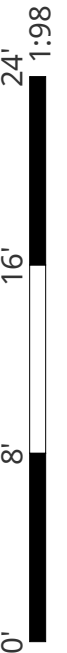
2 Bedrooms

1 Bathroom

1st Floor

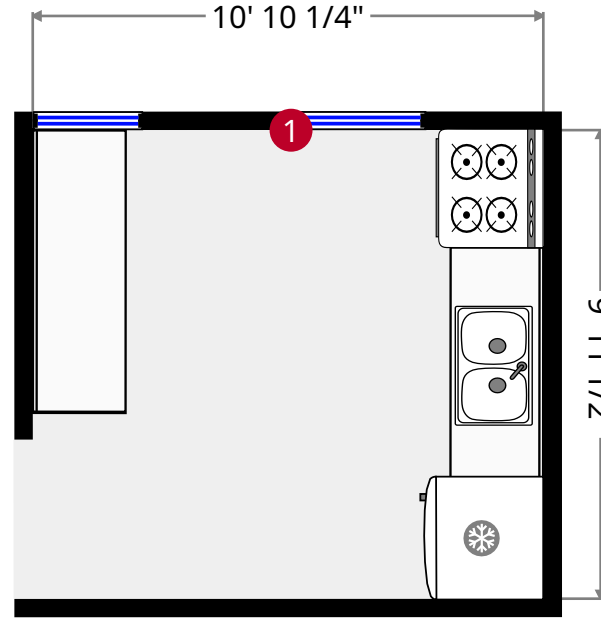
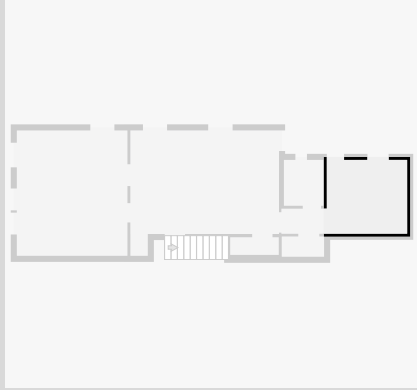


THIS FLOORPLAN IS PROVIDED WITHOUT WARRANTY OF ANY KIND. NAZCA PROPERTIES
DISCLAIMS ANY WARRANTY INCLUDING, WITHOUT LIMITATION, SATISFACTORY QUALITY OR
ACCURACY OF DIMENSIONS.



Kitchen

Width: 9' 11 1/2"
Length: 10' 10"
Area: 107.90 sq ft
Perimeter: 41' 7"
Ceiling Height: 10' 1 3/4"



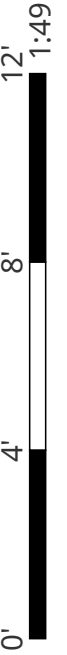
1



Hung Window

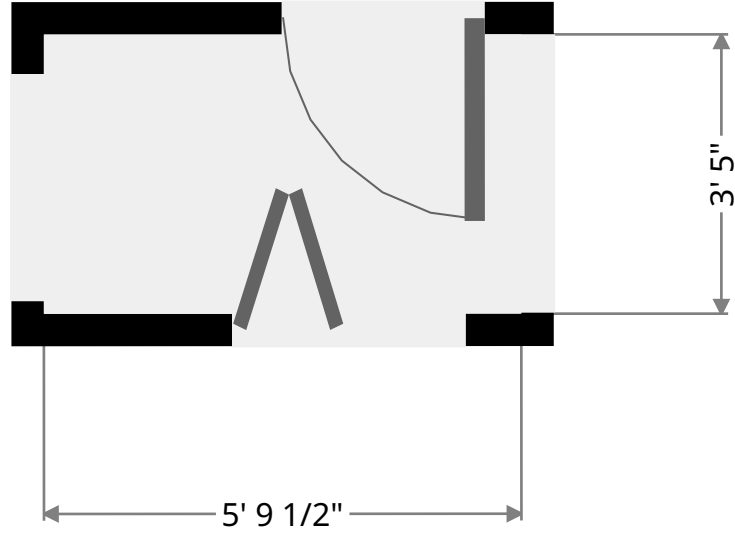
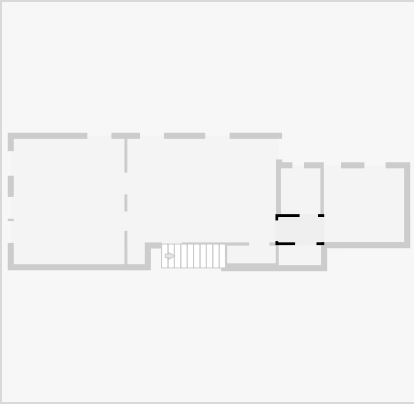
- Height: 4' 5 1/4"

THIS FLOORPLAN IS PROVIDED WITHOUT WARRANTY OF ANY KIND. NAZCA PROPERTIES
DISCLAIMS ANY WARRANTY INCLUDING, WITHOUT LIMITATION, SATISFACTORY QUALITY OR
ACCURACY OF DIMENSIONS.



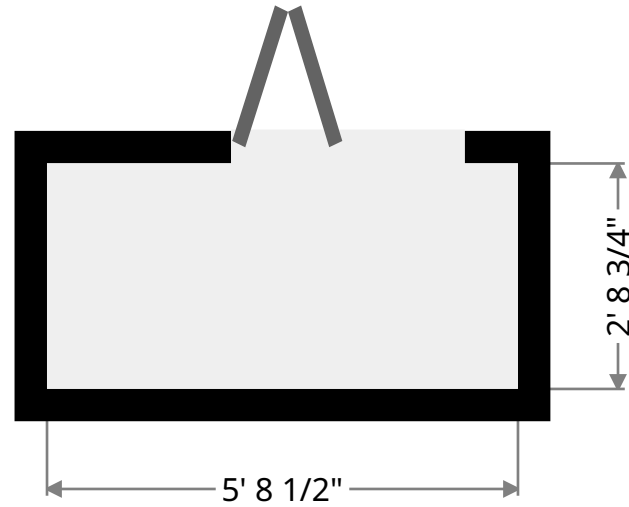
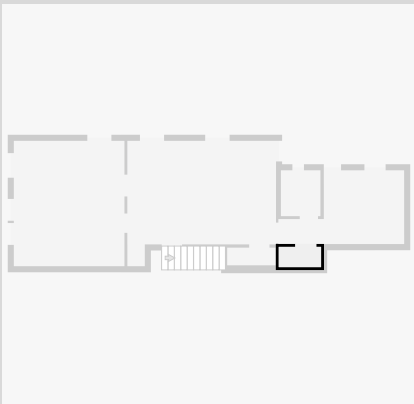
Hall

Width: 3' 4 3/4"
Length: 5' 9 1/2"
Area: 19.64 sq ft
Perimeter: 18' 4 1/2"

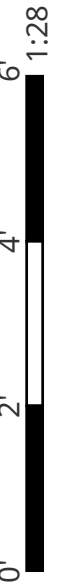


Closet

Width: 2' 8 3/4"
Length: 5' 8 1/2"
Area: 15.64 sq ft
Perimeter: 16' 10 3/4"

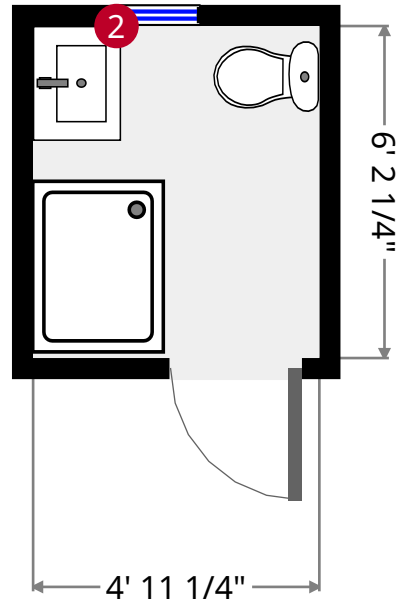
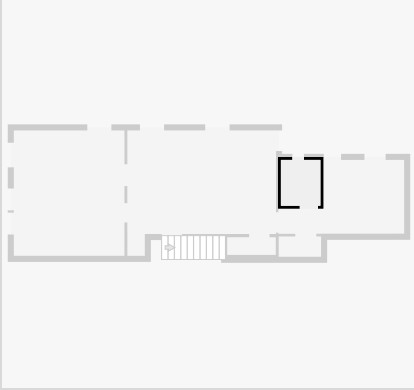


THIS FLOORPLAN IS PROVIDED WITHOUT WARRANTY OF ANY KIND. NAZCA PROPERTIES
DISCLAIMS ANY WARRANTY INCLUDING, WITHOUT LIMITATION, SATISFACTORY QUALITY OR
ACCURACY OF DIMENSIONS.



Bathroom

Width: 5' 4"
Length: 6' 2 1/4"
Area: 33.01 sq ft
Perimeter: 23' 1/2"
Ceiling Height: 7' 9 1/4"



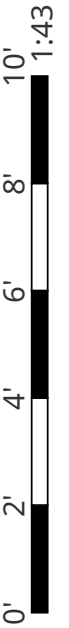
2



Hung Window

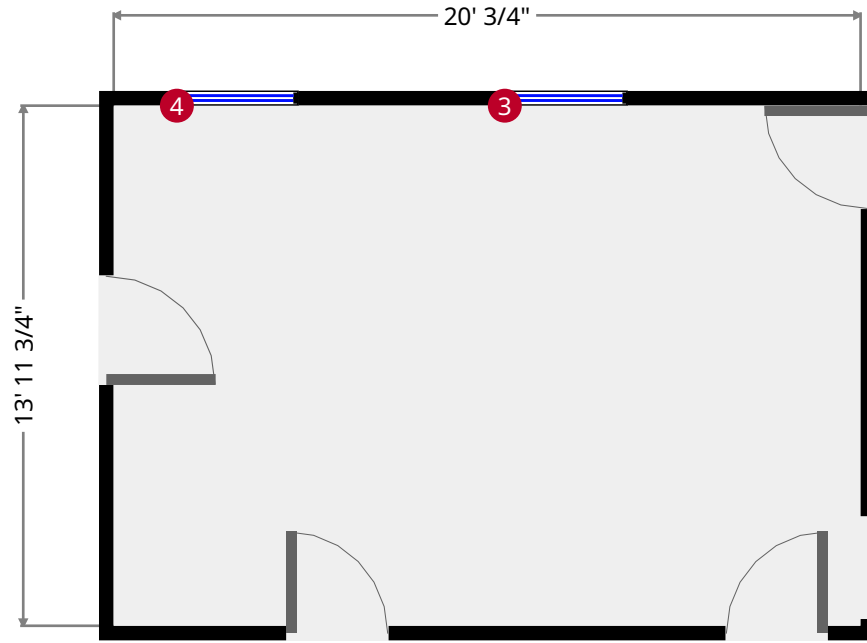
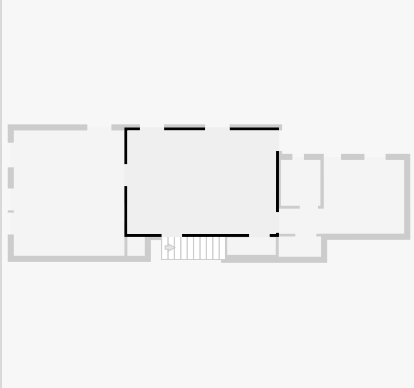
- Height: 2' 9 1/2"

THIS FLOORPLAN IS PROVIDED WITHOUT WARRANTY OF ANY KIND. NAZCA PROPERTIES
DISCLAIMS ANY WARRANTY INCLUDING, WITHOUT LIMITATION, SATISFACTORY QUALITY OR
ACCURACY OF DIMENSIONS.



Living Room

Width: 13' 11 3/4"
 Length: 20' 3/4"
 Area: 280.49 sq ft
 Perimeter: 68' 1"
 Ceiling Height: 10' 4"



3



Hung Window

- Height: 7' 3 1/2"

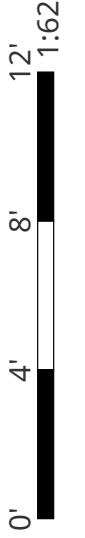
4



Hung Window

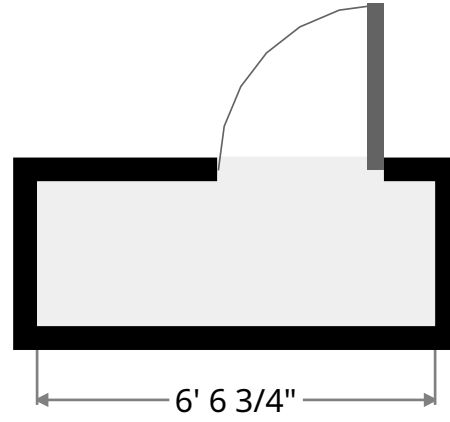
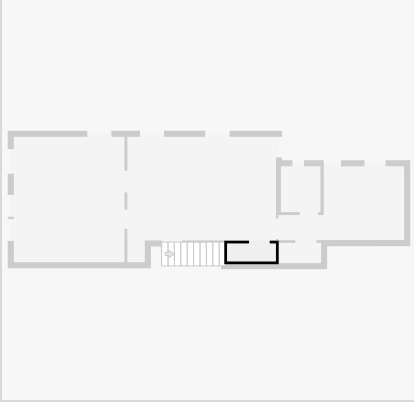
- Height: 7' 3 1/2"

THIS FLOORPLAN IS PROVIDED WITHOUT WARRANTY OF ANY KIND. NAZCA PROPERTIES
 DISCLAIMS ANY WARRANTY INCLUDING, WITHOUT LIMITATION, SATISFACTORY QUALITY OR
 ACCURACY OF DIMENSIONS.



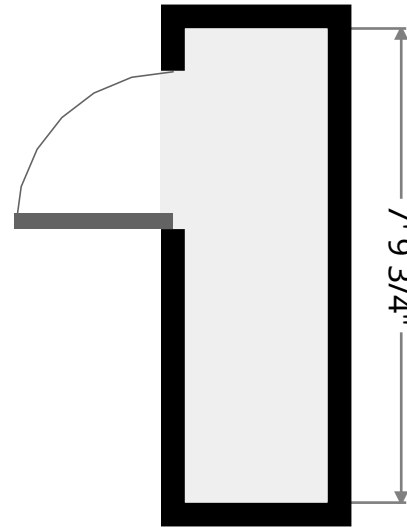
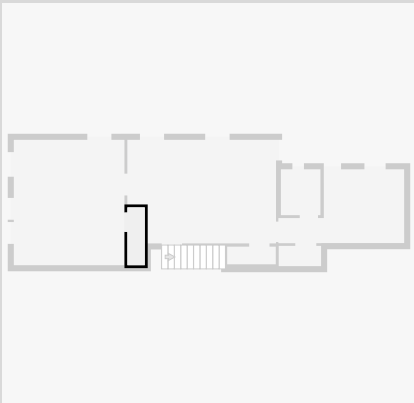
Closet

Width: 2' 4 1/2"
Length: 6' 6 3/4"
Area: 15.61 sq ft
Perimeter: 17' 10 1/2"



Closet

Width: 2' 4 1/4"
Length: 7' 9 3/4"
Area: 18.34 sq ft
Perimeter: 20' 3 3/4"

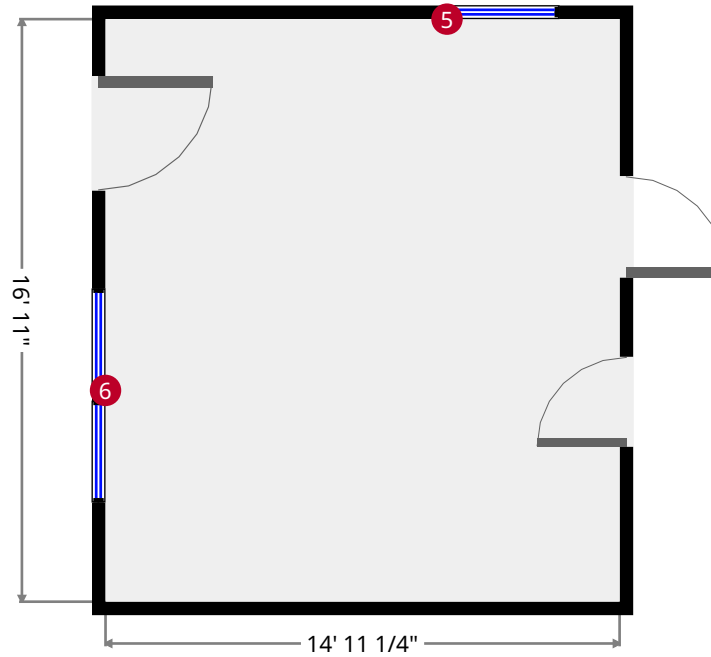
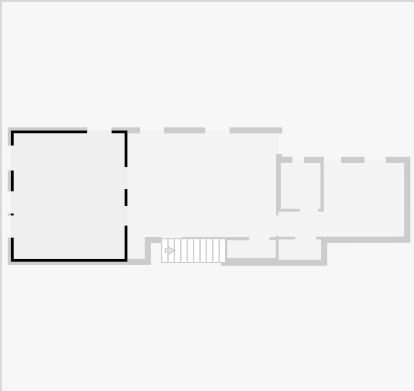


THIS FLOORPLAN IS PROVIDED WITHOUT WARRANTY OF ANY KIND. NAZCA PROPERTIES
DISCLAIMS ANY WARRANTY INCLUDING, WITHOUT LIMITATION, SATISFACTORY QUALITY OR
ACCURACY OF DIMENSIONS.



Bedroom

Width: 14' 11 1/4"
Length: 16' 11"
Area: 252.52 sq ft
Perimeter: 63' 8 1/4"
Ceiling Height: 10' 4 1/4"



5



Hung Window

- Height: 7' 3 1/4"

6



Hung Window

- Height: 7' 3 1/4"

THIS FLOORPLAN IS PROVIDED WITHOUT WARRANTY OF ANY KIND. NAZCA PROPERTIES
DISCLAIMS ANY WARRANTY INCLUDING, WITHOUT LIMITATION, SATISFACTORY QUALITY OR
ACCURACY OF DIMENSIONS.



2701 Euclid Ave. Apt. 1



270,

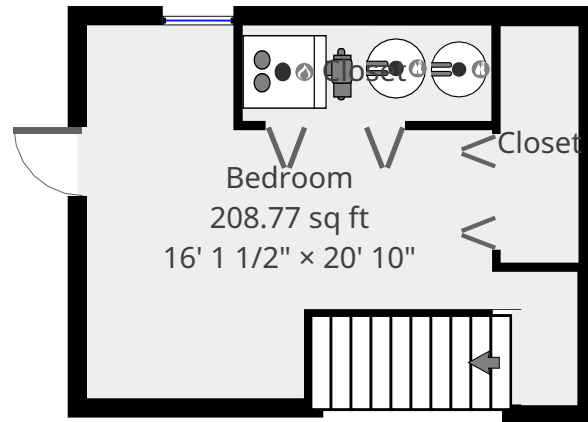


Nazca Properties
manager@nazcaproperties.com
513-535-2154

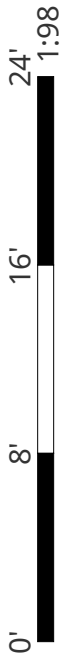
Statistics

Area: 1016 sq ft
2 Floors
2 Bedrooms
1 Bathroom

Basement

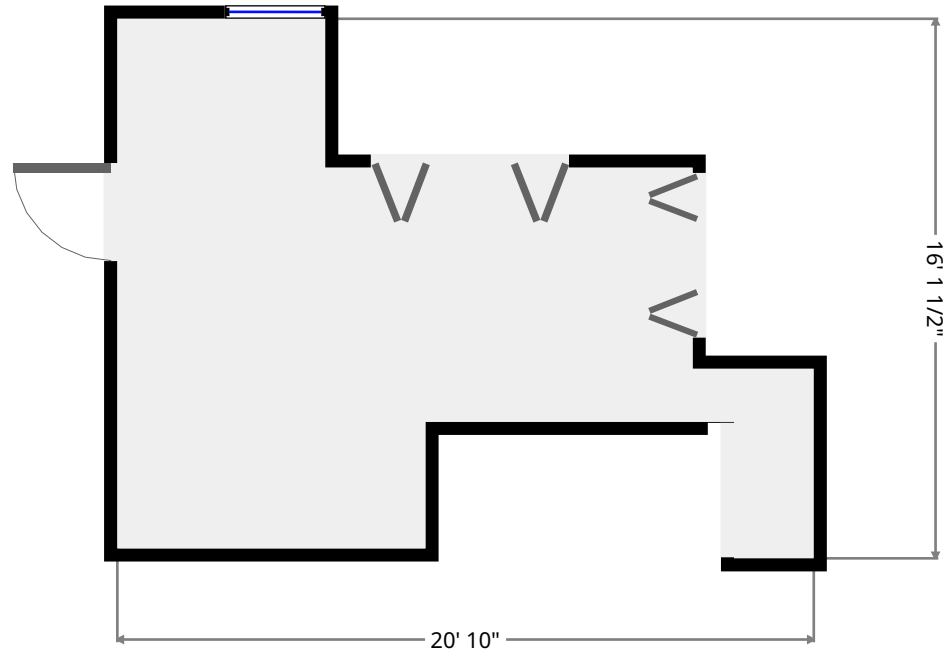
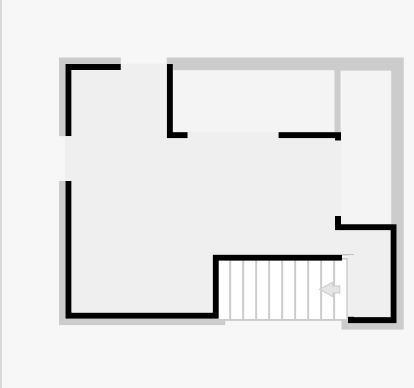


THIS FLOORPLAN IS PROVIDED WITHOUT WARRANTY OF ANY KIND. NAZCA PROPERTIES
DISCLAIMS ANY WARRANTY INCLUDING, WITHOUT LIMITATION, SATISFACTORY QUALITY OR
ACCURACY OF DIMENSIONS.



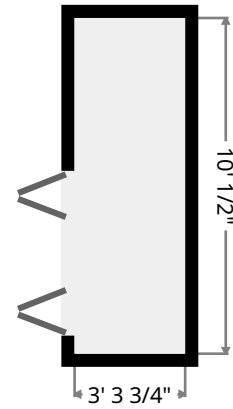
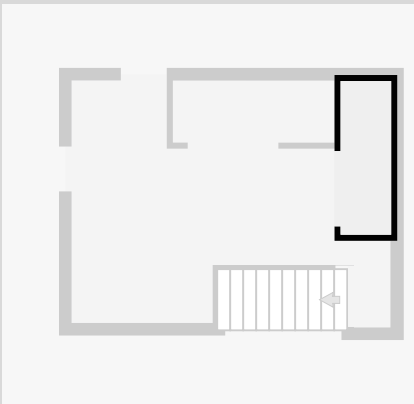
Bedroom

Width: 16' 1 1/2"
Length: 20' 10"
Area: 208.77 sq ft
Perimeter: 81' 6"
Ceiling Height: 6' 11 3/4"



Closet

Width: 3' 3 3/4"
Length: 10' 1/2"
Area: 33.20 sq ft
Perimeter: 26' 8 1/4"

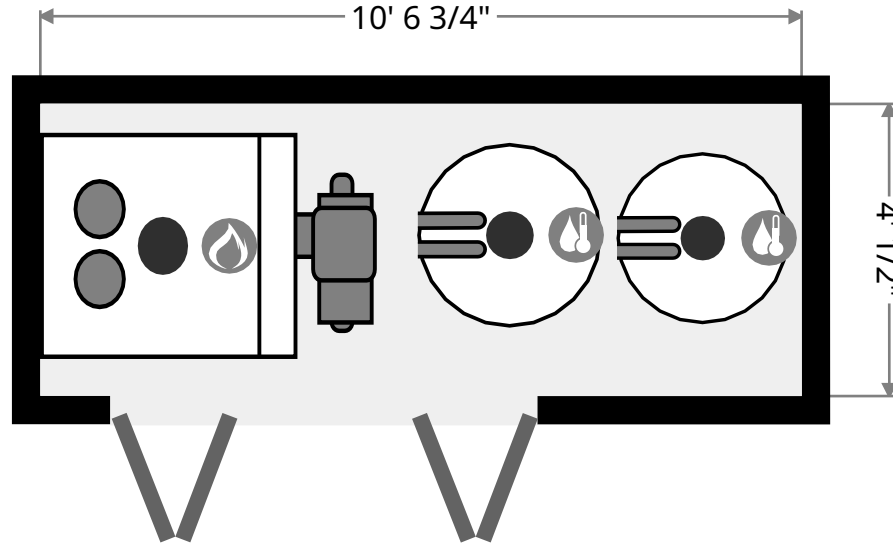
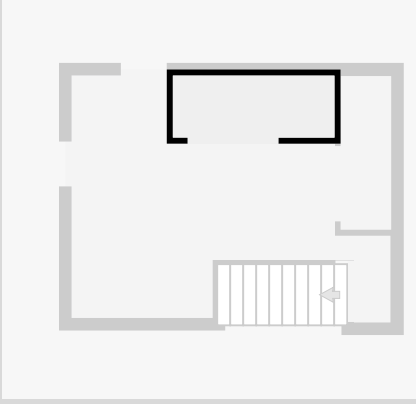


THIS FLOORPLAN IS PROVIDED WITHOUT WARRANTY OF ANY KIND. NAZCA PROPERTIES
DISCLAIMS ANY WARRANTY INCLUDING, WITHOUT LIMITATION, SATISFACTORY QUALITY OR
ACCURACY OF DIMENSIONS.



Closet

Width: 4' 1/2"
Length: 10' 6 3/4"
Area: 42.78 sq ft
Perimeter: 29' 2 3/4"



THIS FLOORPLAN IS PROVIDED WITHOUT WARRANTY OF ANY KIND. NAZCA PROPERTIES
DISCLAIMS ANY WARRANTY INCLUDING, WITHOUT LIMITATION, SATISFACTORY QUALITY OR
ACCURACY OF DIMENSIONS.