

# 2701 Euclid Ave. Apt. 2

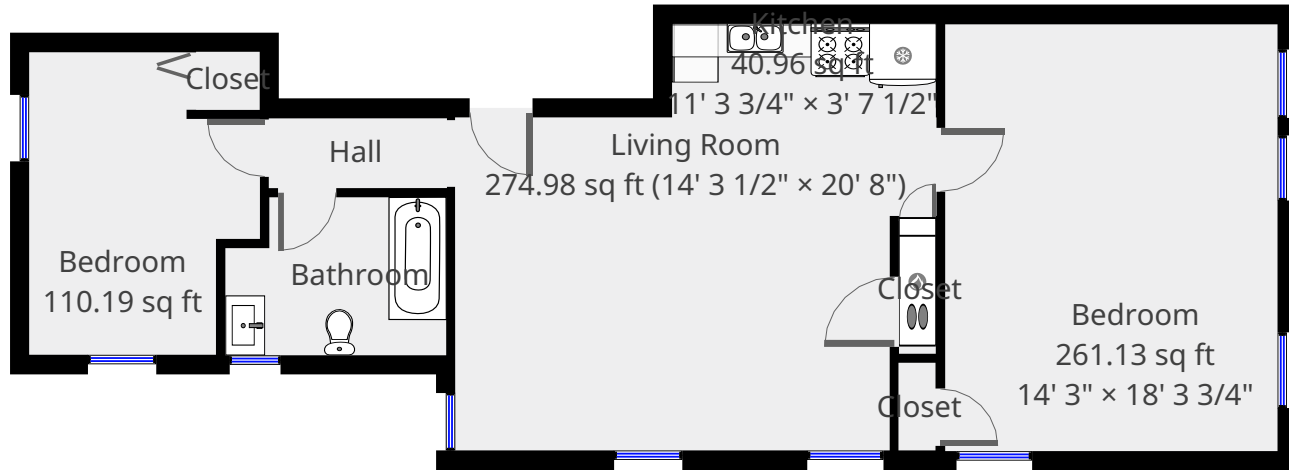


**Nazca Properties**  
manager@nazcaproperties.com  
513-535-2154

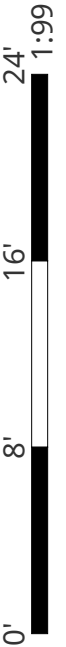
## Statistics

Area: 792 sq ft  
1 Floor  
2 Bedrooms  
1 Bathroom

2nd Floor

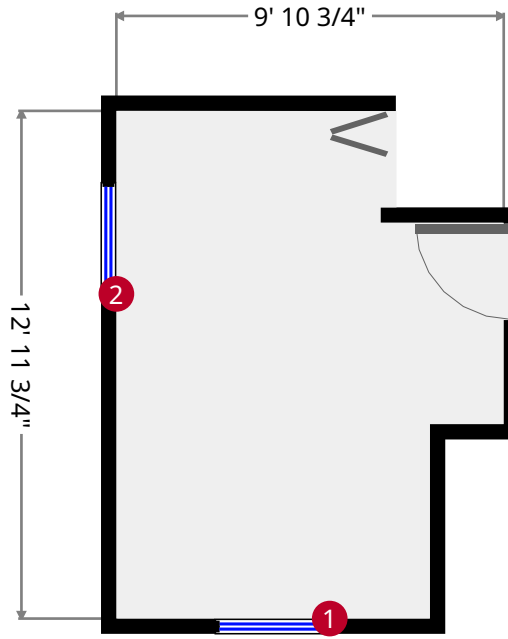
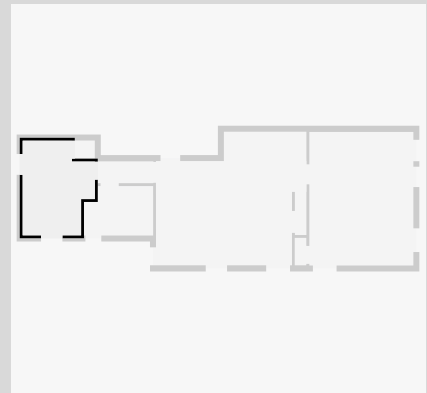


THIS FLOORPLAN IS PROVIDED WITHOUT WARRANTY OF ANY KIND. NAZCA PROPERTIES  
DISCLAIMS ANY WARRANTY INCLUDING, WITHOUT LIMITATION, SATISFACTORY QUALITY OR  
ACCURACY OF DIMENSIONS.



# Bedroom

Width: 9' 10 3/4"  
 Length: 12' 11 3/4"  
 Area: 110.19 sq ft  
 Perimeter: 45' 9 1/4"  
 Ceiling Height: 8' 6 1/4"



1



Hung Window

- Height: 5' 2 3/4"

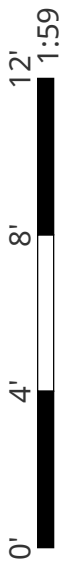
2



Hung Window

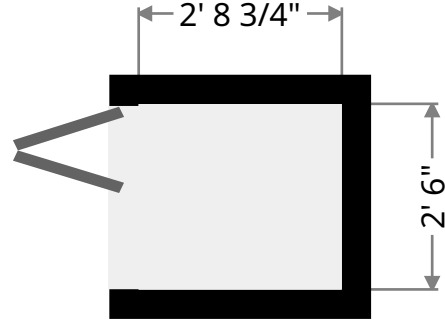
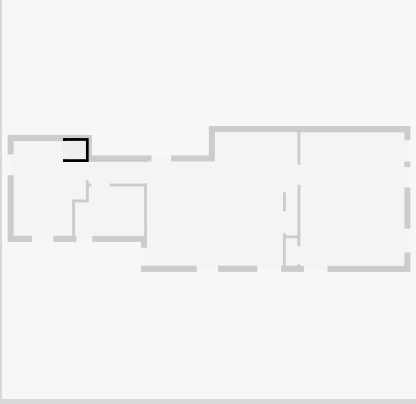
- Height: 5' 2 1/2"

THIS FLOORPLAN IS PROVIDED WITHOUT WARRANTY OF ANY KIND. NAZCA PROPERTIES  
 DISCLAIMS ANY WARRANTY INCLUDING, WITHOUT LIMITATION, SATISFACTORY QUALITY OR  
 ACCURACY OF DIMENSIONS.



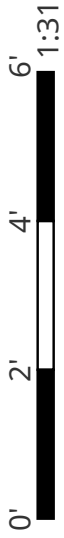
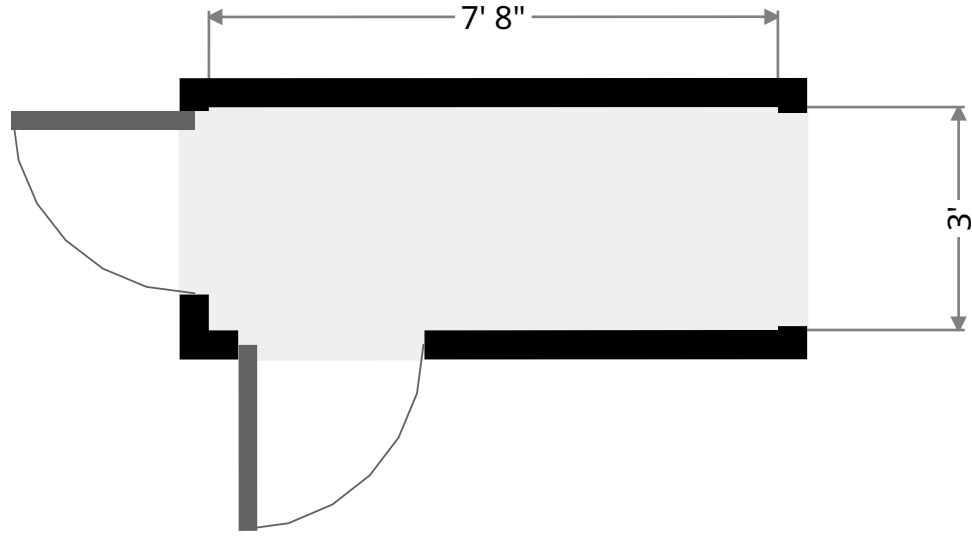
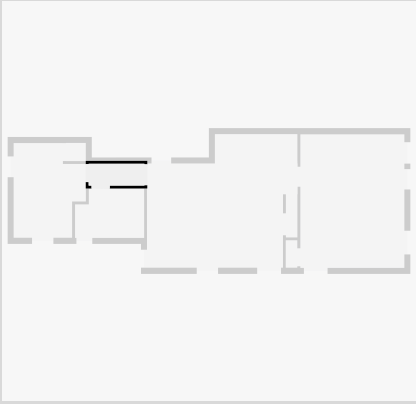
## Closet

Width: 2' 6"  
Length: 2' 8 3/4"  
Area: 6.81 sq ft  
Perimeter: 10' 5 1/4"



## Hall

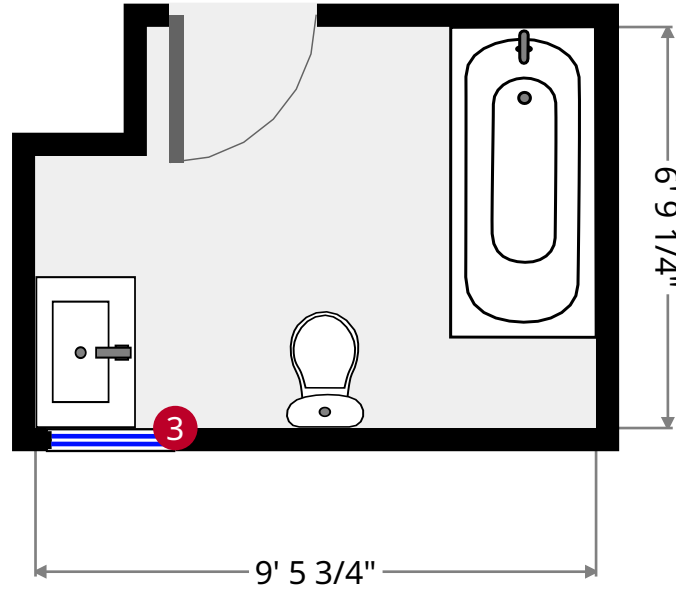
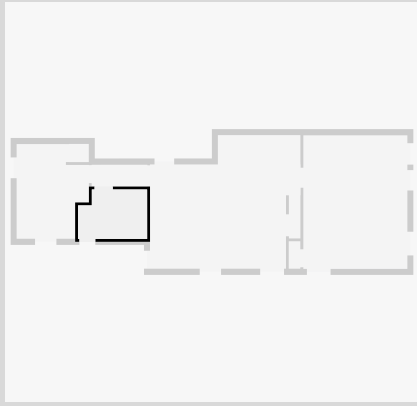
Width: 3'  
Length: 7' 8"  
Area: 22.90 sq ft  
Perimeter: 21' 3 1/4"



THIS FLOORPLAN IS PROVIDED WITHOUT WARRANTY OF ANY KIND. NAZCA PROPERTIES  
DISCLAIMS ANY WARRANTY INCLUDING, WITHOUT LIMITATION, SATISFACTORY QUALITY OR  
ACCURACY OF DIMENSIONS.

# Bathroom

Width: 6' 9 1/4"  
Length: 9' 5 3/4"  
Area: 60.10 sq ft  
Perimeter: 32' 6"



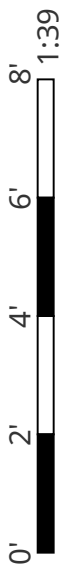
3



Hung Window

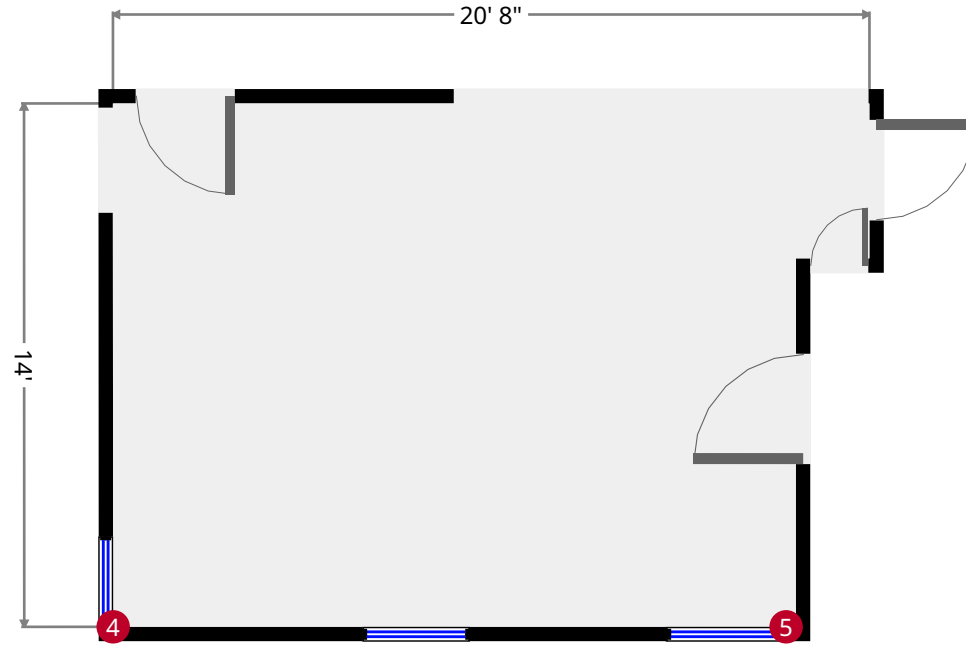
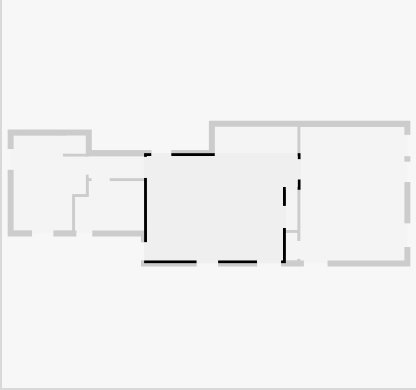
- Height: 3' 7 1/2"

THIS FLOORPLAN IS PROVIDED WITHOUT WARRANTY OF ANY KIND. NAZCA PROPERTIES  
DISCLAIMS ANY WARRANTY INCLUDING, WITHOUT LIMITATION, SATISFACTORY QUALITY OR  
ACCURACY OF DIMENSIONS.



# Living Room

Width: 14' 3 1/2"  
Length: 20' 8"  
Area: 274.98 sq ft  
Perimeter: 69' 10 1/2"  
Ceiling Height: 9' 9 1/2"



4



Hung Window

- Height: 4' 7 1/2"

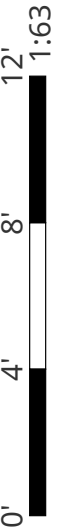
5



Hung Window

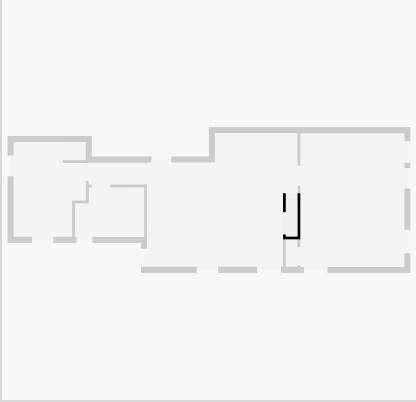
- Height: 6' 7 1/2"

THIS FLOORPLAN IS PROVIDED WITHOUT WARRANTY OF ANY KIND. NAZCA PROPERTIES  
DISCLAIMS ANY WARRANTY INCLUDING, WITHOUT LIMITATION, SATISFACTORY QUALITY OR  
ACCURACY OF DIMENSIONS.



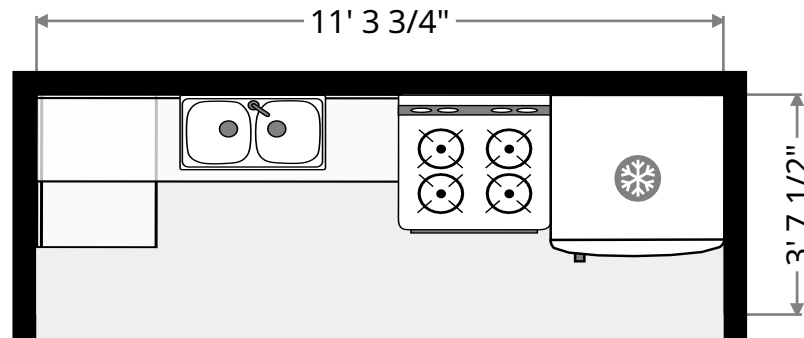
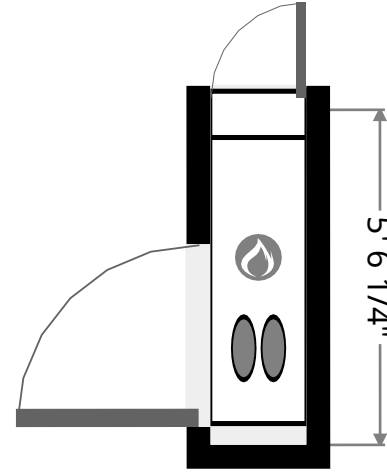
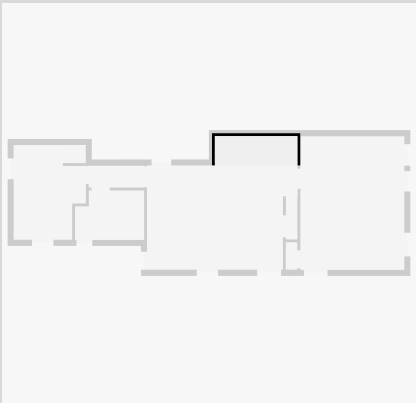
## Closet

Width: 1' 7"  
 Length: 5' 6 1/4"  
 Area: 8.71 sq ft  
 Perimeter: 14' 2 1/4"

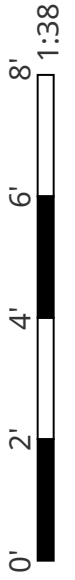


## Kitchen

Width: 3' 7 1/2"  
 Length: 11' 3 3/4"  
 Area: 40.96 sq ft  
 Perimeter: 29' 10 1/2"

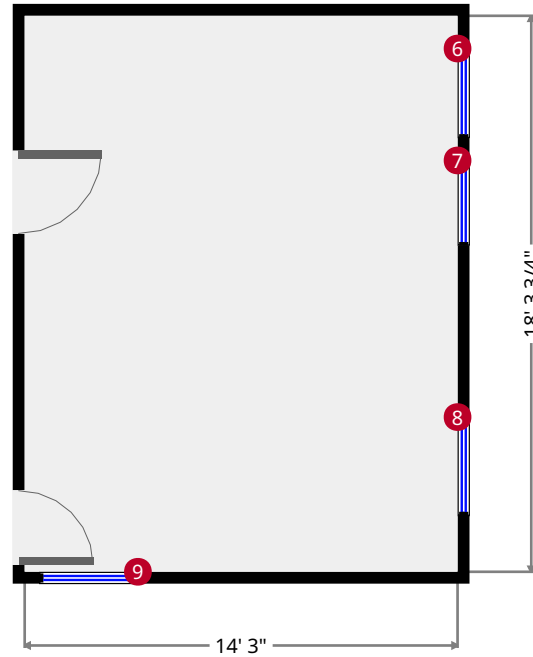
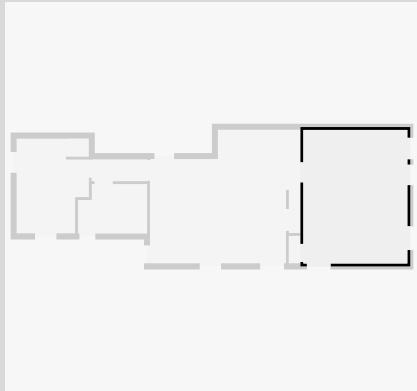


THIS FLOORPLAN IS PROVIDED WITHOUT WARRANTY OF ANY KIND. NAZCA PROPERTIES  
 DISCLAIMS ANY WARRANTY INCLUDING, WITHOUT LIMITATION, SATISFACTORY QUALITY OR  
 ACCURACY OF DIMENSIONS.



# Bedroom

Width: 14' 3"  
 Length: 18' 3 3/4"  
 Area: 261.13 sq ft  
 Perimeter: 65' 1 3/4"  
 Ceiling Height: 9' 10 3/4"



6



Hung Window

- Height: 6' 7 3/4"

7



Hung Window

- Height: 6' 7 1/4"

8



Hung Window

- Height: 6' 7 1/2"

9



Hung Window

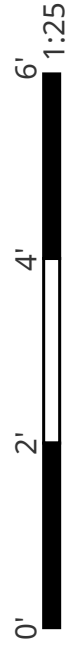
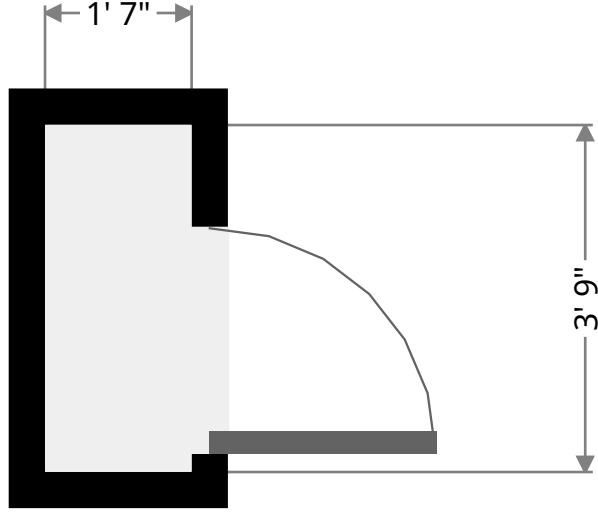
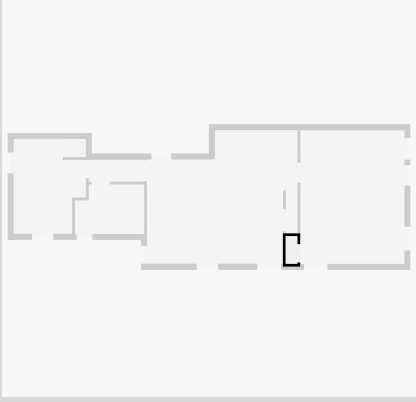
- Height: 6' 7 1/2"

THIS FLOORPLAN IS PROVIDED WITHOUT WARRANTY OF ANY KIND. NAZCA PROPERTIES  
 DISCLAIMS ANY WARRANTY INCLUDING, WITHOUT LIMITATION, SATISFACTORY QUALITY OR  
 ACCURACY OF DIMENSIONS.



# Closet

Width: 1' 7"  
Length: 3' 9"  
Area: 5.97 sq ft  
Perimeter: 10' 8 1/4"



THIS FLOORPLAN IS PROVIDED WITHOUT WARRANTY OF ANY KIND. NAZCA PROPERTIES  
DISCLAIMS ANY WARRANTY INCLUDING, WITHOUT LIMITATION, SATISFACTORY QUALITY OR  
ACCURACY OF DIMENSIONS.