

# 2701 Euclid Ave. Apt. 3

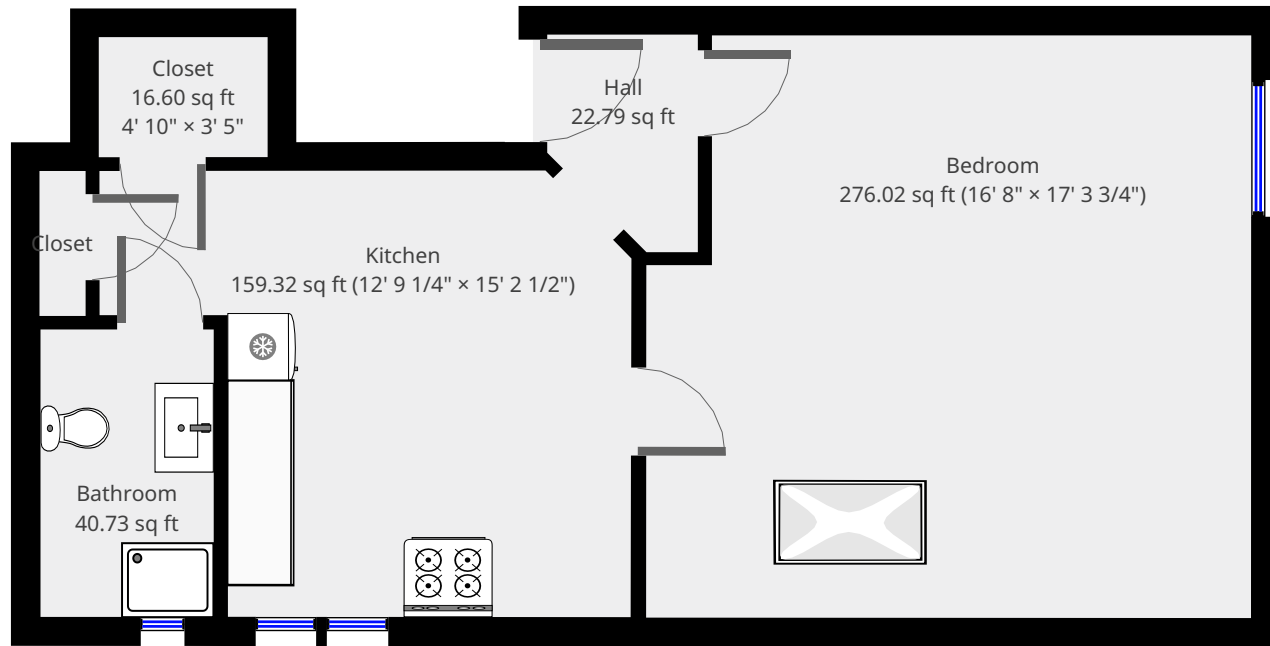
3rd Floor



**Nazca Properties**  
manager@nazcaproperties.com  
513-535-2154

## Statistics

Area: 521 sq ft  
1 Floor  
1 Bedroom  
1 Bathroom

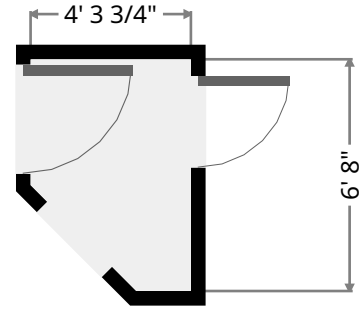
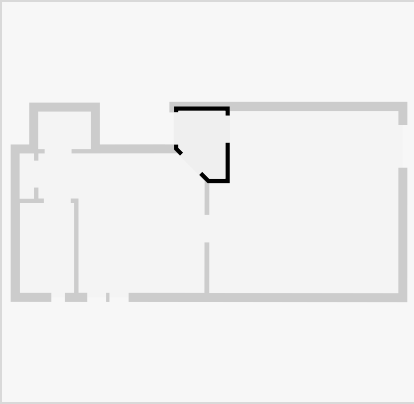


THIS FLOORPLAN IS PROVIDED WITHOUT WARRANTY OF ANY KIND. NAZCA PROPERTIES  
DISCLAIMS ANY WARRANTY INCLUDING, WITHOUT LIMITATION, SATISFACTORY QUALITY OR  
ACCURACY OF DIMENSIONS.



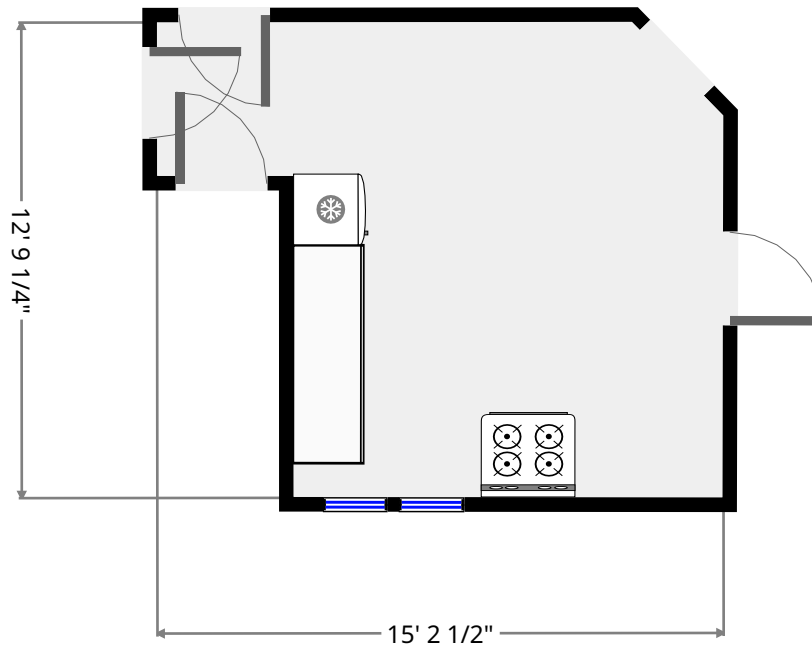
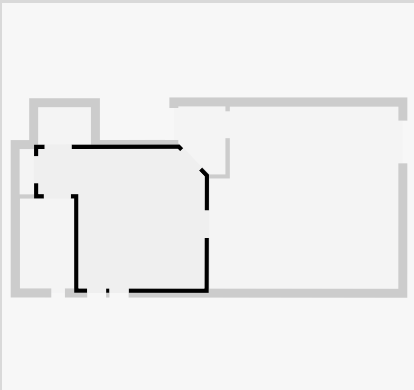
## Hall

Width: 4' 3 3/4"  
Length: 6' 2 3/4"  
Area: 22.79 sq ft  
Perimeter: 19' 4 3/4"



## Kitchen

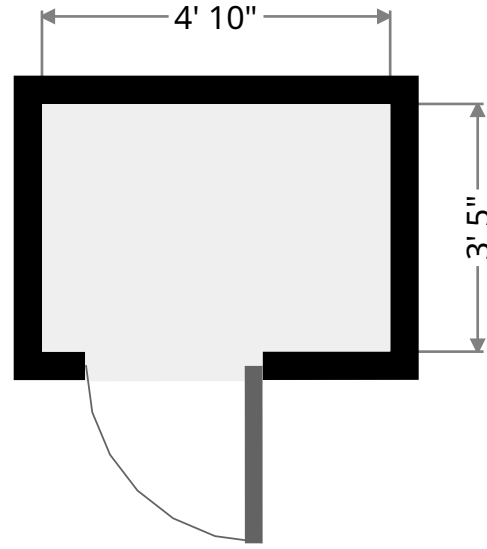
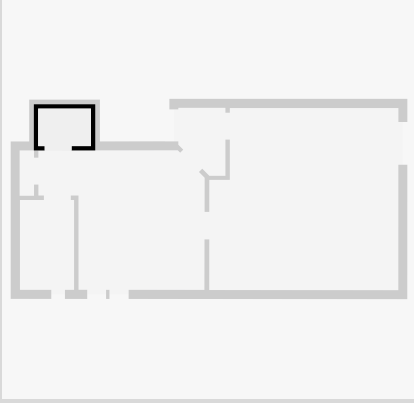
Width: 12' 9 1/4"  
Length: 15' 2 1/2"  
Area: 159.32 sq ft  
Perimeter: 54' 5 3/4"  
Ceiling Height: 8' 8 1/2"



THIS FLOORPLAN IS PROVIDED WITHOUT WARRANTY OF ANY KIND. NAZCA PROPERTIES  
DISCLAIMS ANY WARRANTY INCLUDING, WITHOUT LIMITATION, SATISFACTORY QUALITY OR  
ACCURACY OF DIMENSIONS.

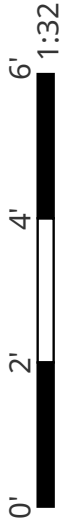
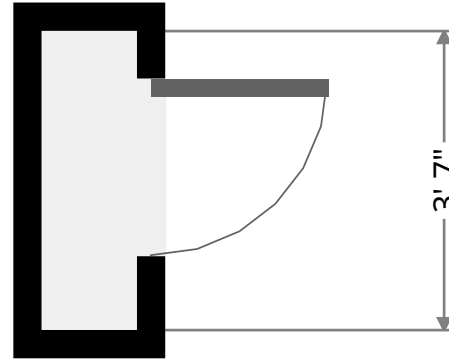
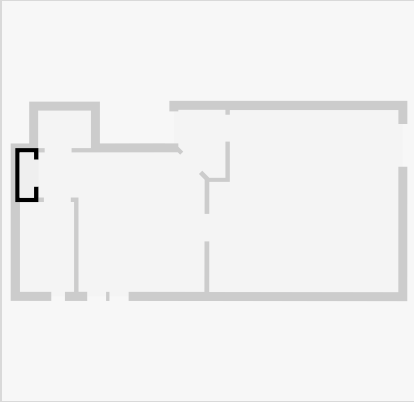
## Closet

Width: 3' 5"  
Length: 4' 10"  
Area: 16.60 sq ft  
Perimeter: 16' 6 1/2"



## Closet

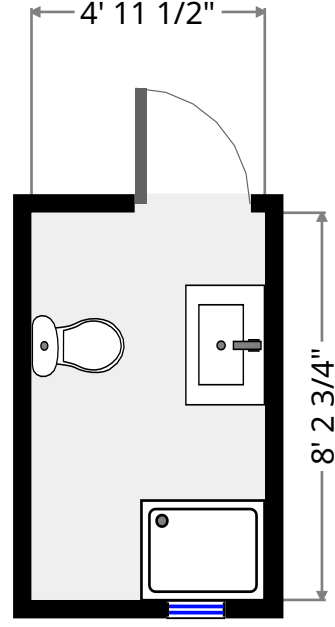
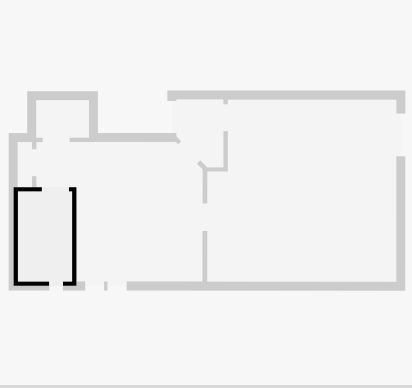
Width: 1' 3 3/4"  
Length: 4' 1 3/4"  
Area: 5.47 sq ft  
Perimeter: 10' 11 1/4"



THIS FLOORPLAN IS PROVIDED WITHOUT WARRANTY OF ANY KIND. NAZCA PROPERTIES  
DISCLAIMS ANY WARRANTY INCLUDING, WITHOUT LIMITATION, SATISFACTORY QUALITY OR  
ACCURACY OF DIMENSIONS.

# Bathroom

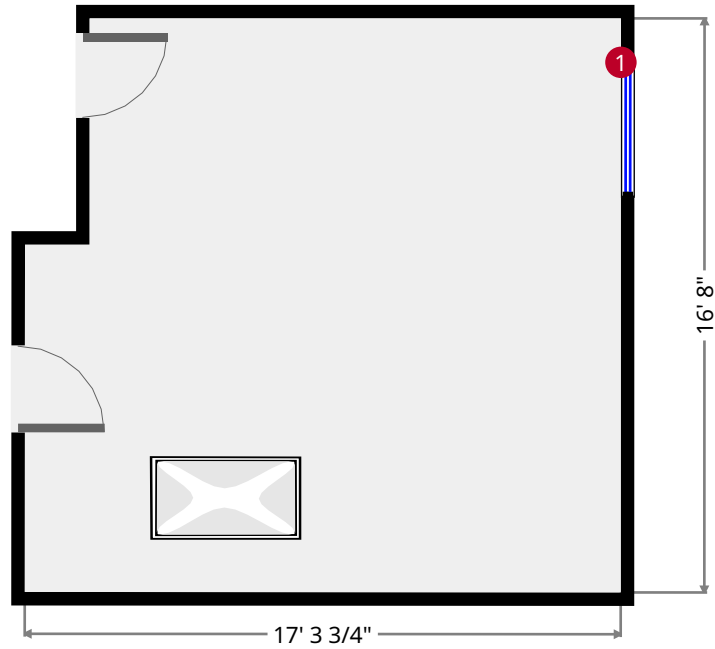
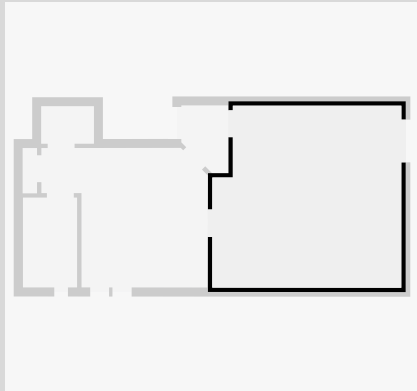
Width: 4' 11 1/2"  
Length: 8' 2 3/4"  
Area: 40.73 sq ft  
Perimeter: 26' 4 1/4"  
Ceiling Height: 6' 11 1/4"



THIS FLOORPLAN IS PROVIDED WITHOUT WARRANTY OF ANY KIND. NAZCA PROPERTIES  
DISCLAIMS ANY WARRANTY INCLUDING, WITHOUT LIMITATION, SATISFACTORY QUALITY OR  
ACCURACY OF DIMENSIONS.

# Bedroom

Width: 16' 8"  
Length: 17' 3 3/4"  
Area: 276.02 sq ft  
Perimeter: 67' 11 1/4"  
Ceiling Height: 8' 8 1/2"



1



Hung Window

- Height: 3' 11 1/2"

THIS FLOORPLAN IS PROVIDED WITHOUT WARRANTY OF ANY KIND. NAZCA PROPERTIES  
DISCLAIMS ANY WARRANTY INCLUDING, WITHOUT LIMITATION, SATISFACTORY QUALITY OR  
ACCURACY OF DIMENSIONS.

