

2703 Euclid Ave. Apt. 2

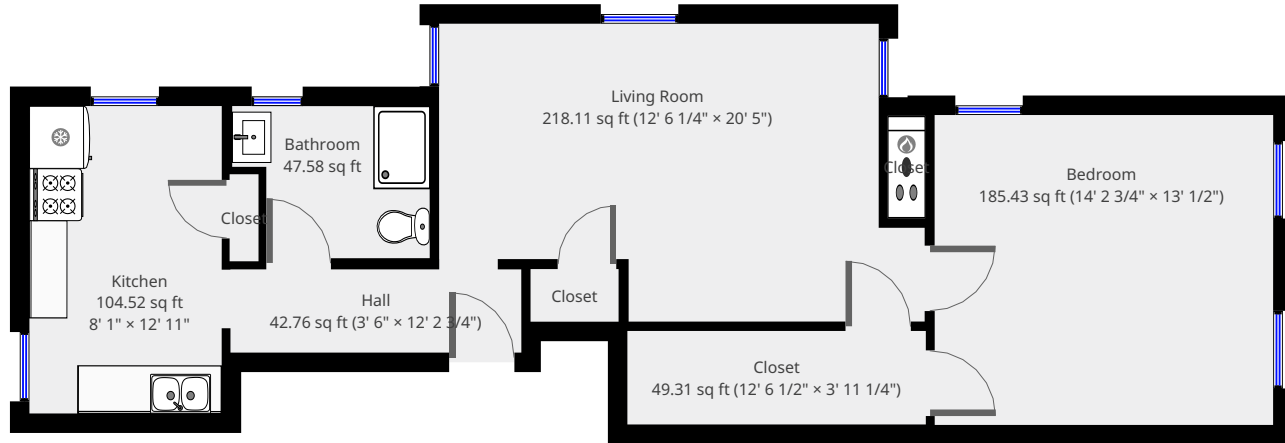
2nd Floor



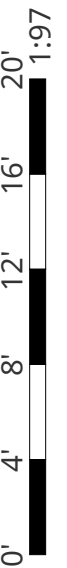
Nazca Properties
manager@nazcaproperties.com
513-535-2154

Statistics

Area: 667 sq ft
1 Floor
1 Bedroom
1 Bathroom

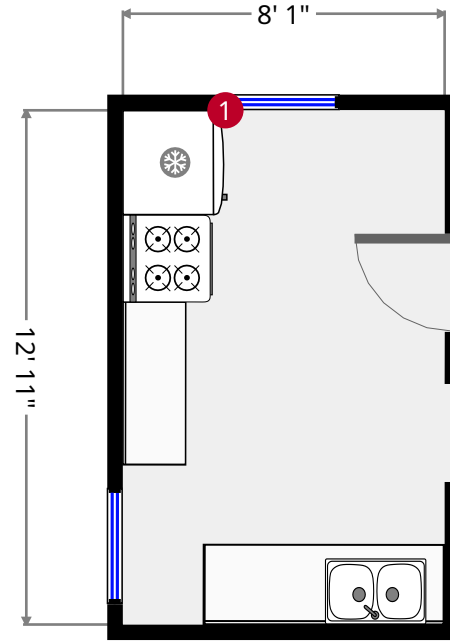
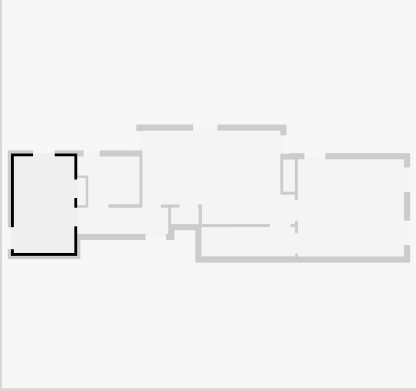


THIS FLOORPLAN IS PROVIDED WITHOUT WARRANTY OF ANY KIND. NAZCA PROPERTIES
DISCLAIMS ANY WARRANTY INCLUDING, WITHOUT LIMITATION, SATISFACTORY QUALITY OR
ACCURACY OF DIMENSIONS.



Kitchen

Width: 8' 1"
Length: 12' 11"
Area: 104.52 sq ft
Perimeter: 42' 1/4"
Ceiling Height: 8' 6"



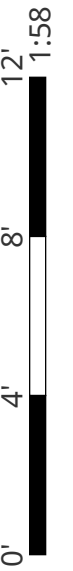
1



Hung Window

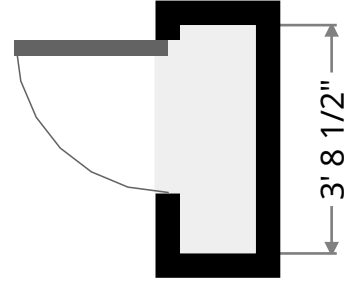
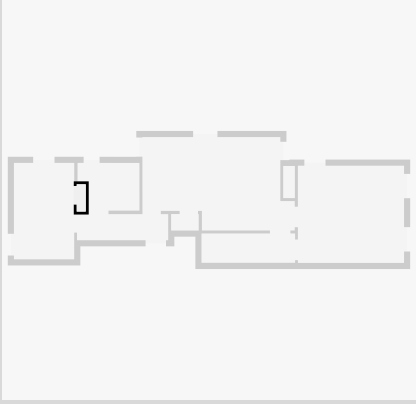
- Height: 5' 1/4"

THIS FLOORPLAN IS PROVIDED WITHOUT WARRANTY OF ANY KIND. NAZCA PROPERTIES
DISCLAIMS ANY WARRANTY INCLUDING, WITHOUT LIMITATION, SATISFACTORY QUALITY OR
ACCURACY OF DIMENSIONS.



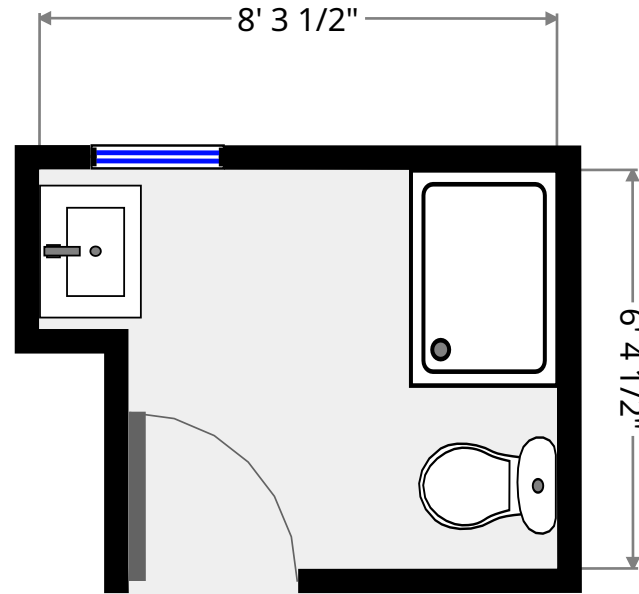
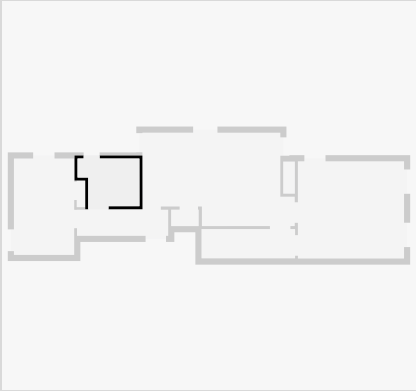
Closet

Width: 1' 3"
Length: 3' 8 1/2"
Area: 4.44 sq ft
Perimeter: 9' 9"



Bathroom

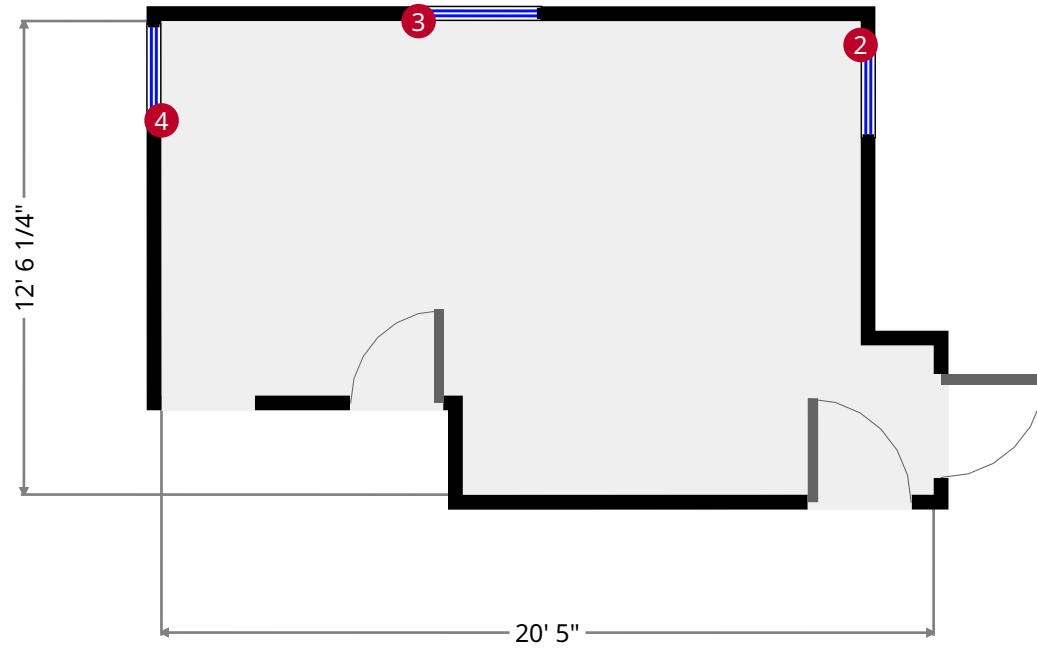
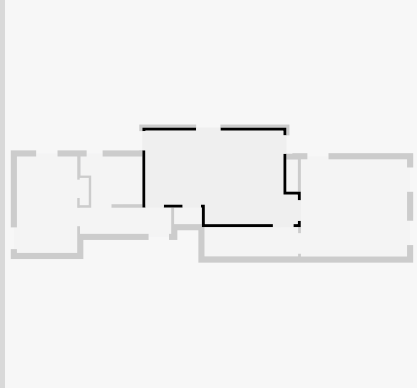
Width: 6' 4 1/2"
Length: 8' 3 1/2"
Area: 47.58 sq ft
Perimeter: 29' 4 3/4"
Ceiling Height: 8' 5 1/4"



THIS FLOORPLAN IS PROVIDED WITHOUT WARRANTY OF ANY KIND. NAZCA PROPERTIES
DISCLAIMS ANY WARRANTY INCLUDING, WITHOUT LIMITATION, SATISFACTORY QUALITY OR
ACCURACY OF DIMENSIONS.

Living Room

Width: 12' 6 1/4"
 Length: 20' 5"
 Area: 218.11 sq ft
 Perimeter: 65' 10 1/2"
 Ceiling Height: 9' 10 1/4"



2



Hung Window

- Height: 6' 4 1/2"

3



Hung Window

- Height: 6' 7 1/2"

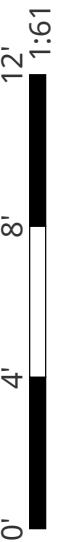
4



Hung Window

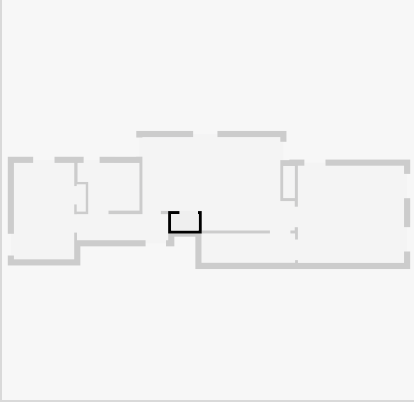
- Height: 4' 6 1/4"

THIS FLOORPLAN IS PROVIDED WITHOUT WARRANTY OF ANY KIND. NAZCA PROPERTIES
 DISCLAIMS ANY WARRANTY INCLUDING, WITHOUT LIMITATION, SATISFACTORY QUALITY OR
 ACCURACY OF DIMENSIONS.



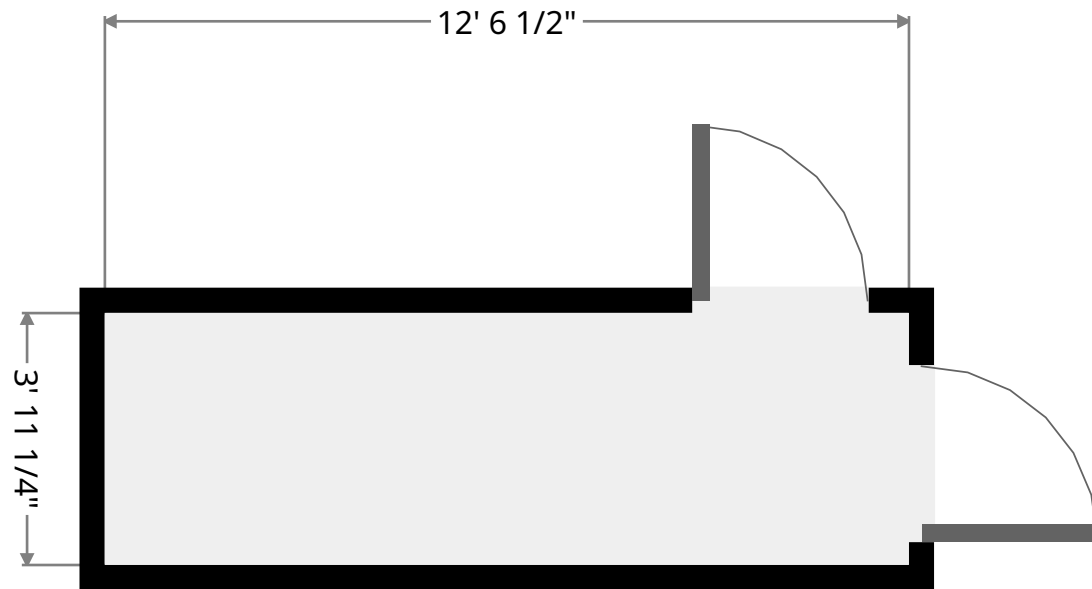
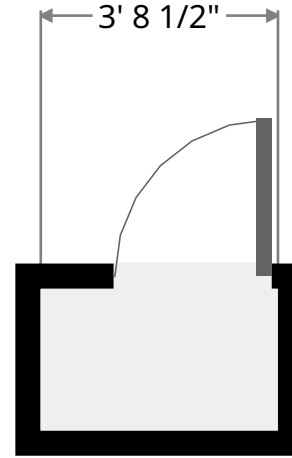
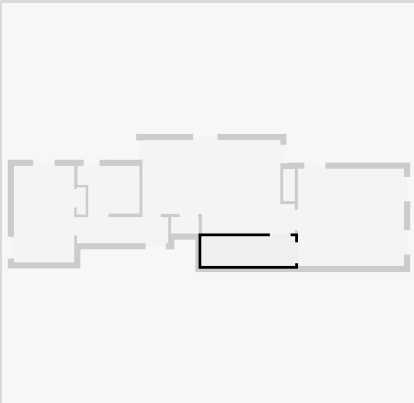
Closet

Width: 2' 2 1/2"
Length: 3' 8 1/2"
Area: 8.18 sq ft
Perimeter: 11' 10"



Closet

Width: 3' 11 1/4"
Length: 12' 6 1/2"
Area: 49.31 sq ft
Perimeter: 32' 11 1/2"

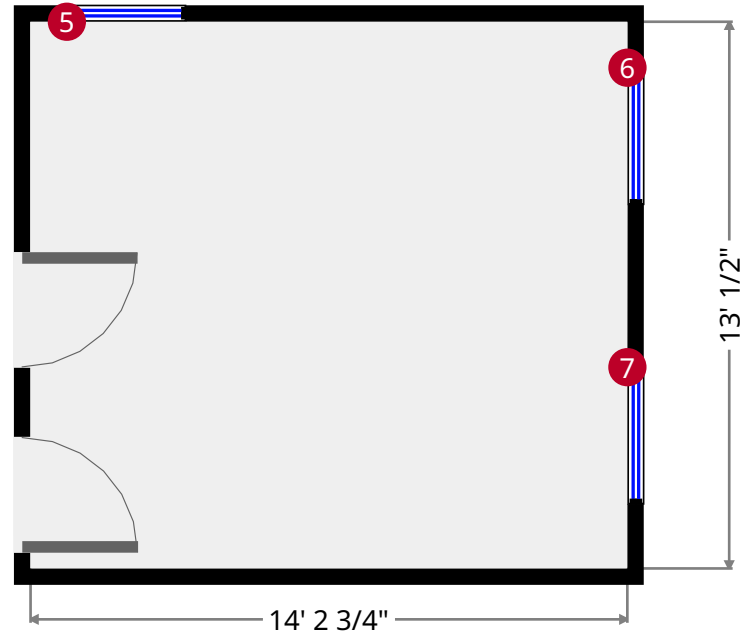
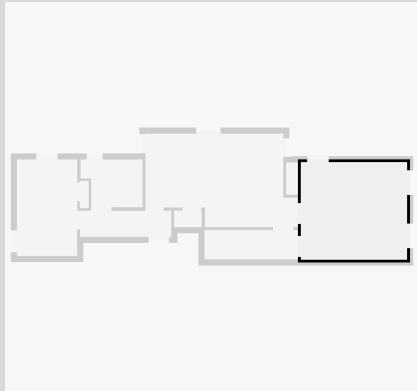


THIS FLOORPLAN IS PROVIDED WITHOUT WARRANTY OF ANY KIND. NAZCA PROPERTIES
DISCLAIMS ANY WARRANTY INCLUDING, WITHOUT LIMITATION, SATISFACTORY QUALITY OR
ACCURACY OF DIMENSIONS.



Bedroom

Width: 13' 1/2"
 Length: 14' 2 3/4"
 Area: 185.43 sq ft
 Perimeter: 54' 6 1/4"
 Ceiling Height: 9' 10 1/4"



5



Hung Window

- Height: 6' 2 3/4"

6



Hung Window

- Height: 6' 7 1/2"

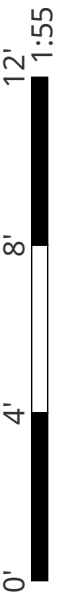
7



Hung Window

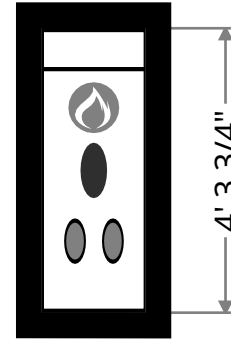
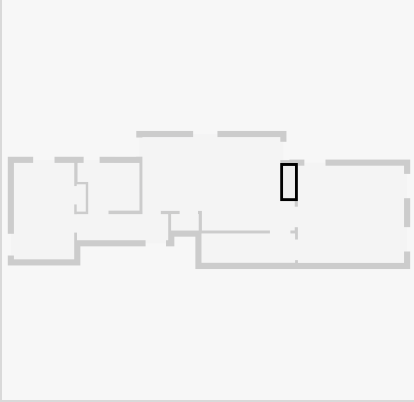
- Height: 6' 7 1/4"

THIS FLOORPLAN IS PROVIDED WITHOUT WARRANTY OF ANY KIND. NAZCA PROPERTIES
 DISCLAIMS ANY WARRANTY INCLUDING, WITHOUT LIMITATION, SATISFACTORY QUALITY OR
 ACCURACY OF DIMENSIONS.



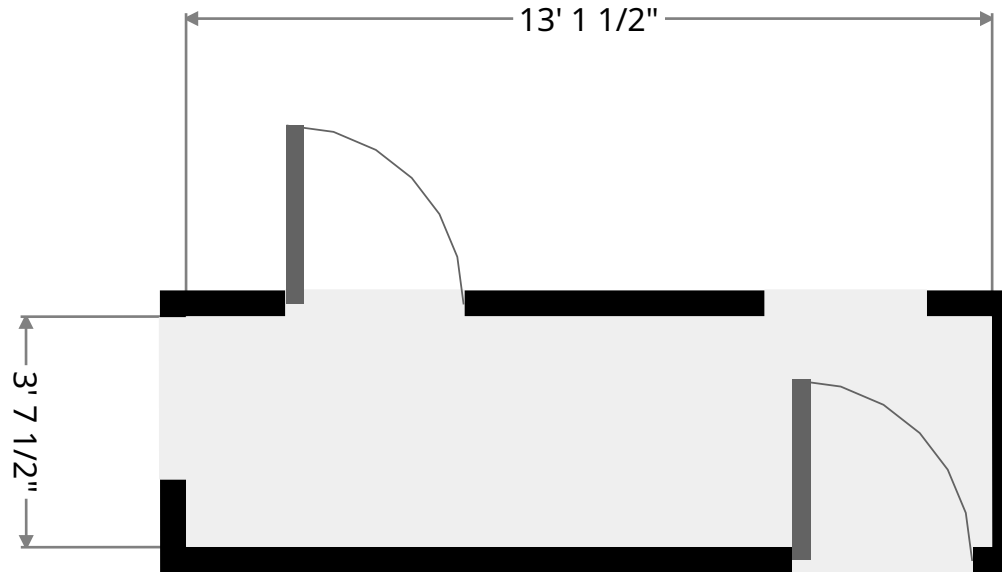
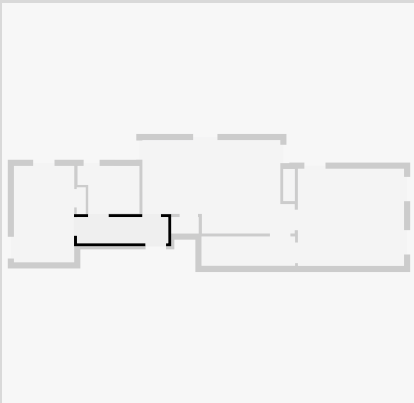
Closet

Width: 1' 6 3/4"
Length: 4' 3 3/4"
Area: 6.76 sq ft
Perimeter: 11' 9 1/4"



Hall

Width: 3' 6"
Length: 12' 2 3/4"
Area: 42.76 sq ft
Perimeter: 31' 5 1/2"



THIS FLOORPLAN IS PROVIDED WITHOUT WARRANTY OF ANY KIND. NAZCA PROPERTIES
DISCLAIMS ANY WARRANTY INCLUDING, WITHOUT LIMITATION, SATISFACTORY QUALITY OR
ACCURACY OF DIMENSIONS.

