

# 2715 Euclid Ave. Apt. 1

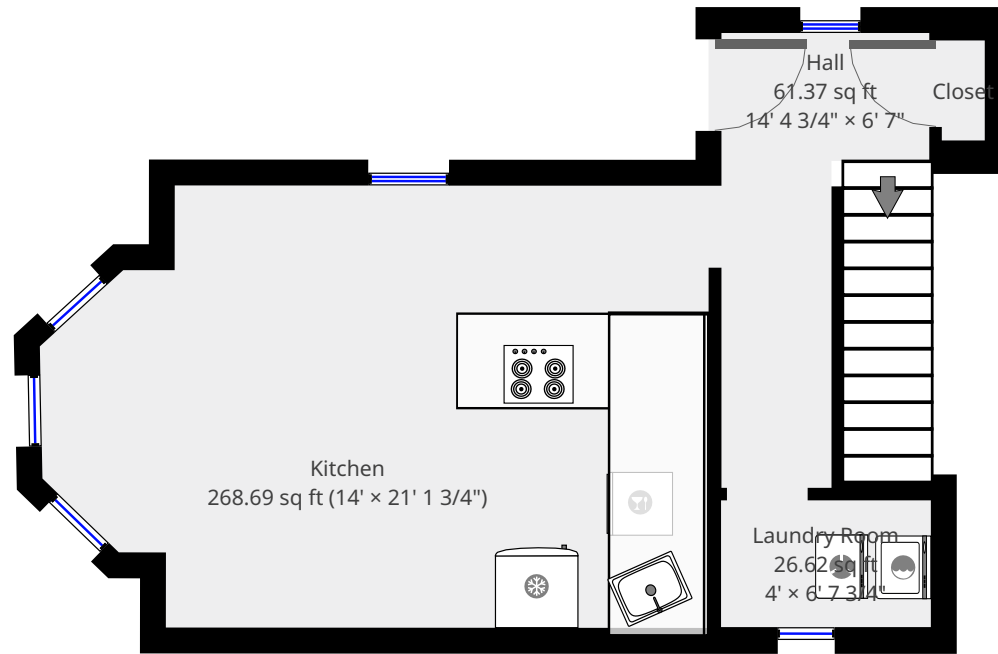


**Nazca Properties**  
manager@nazcaproperties.com  
513-535-2154

## Statistics

Area: 1280 sq ft  
3 Floors  
3 Bedrooms  
2 Bathrooms

## 1st Floor

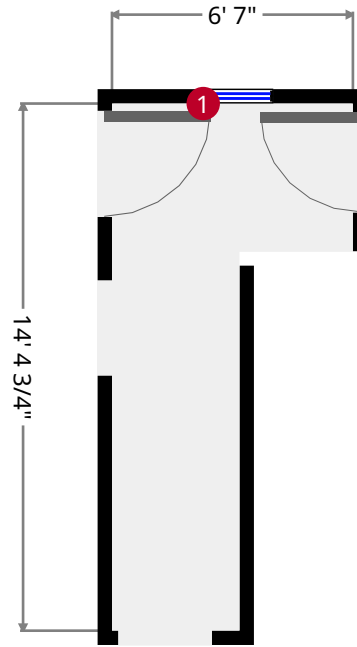
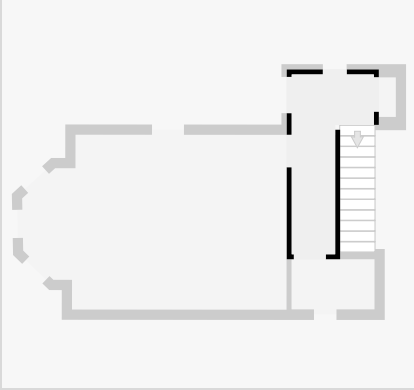


THIS FLOORPLAN IS PROVIDED WITHOUT WARRANTY OF ANY KIND. NAZCA PROPERTIES  
DISCLAIMS ANY WARRANTY INCLUDING, WITHOUT LIMITATION, SATISFACTORY QUALITY OR  
ACCURACY OF DIMENSIONS.



# Hall

Width: 6' 7"  
Length: 14' 4 3/4"  
Area: 61.37 sq ft  
Perimeter: 41' 11 1/4"  
Ceiling Height: 11' 4"

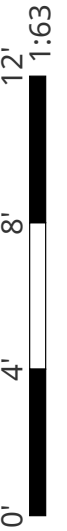


1



Hung Window

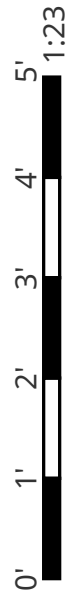
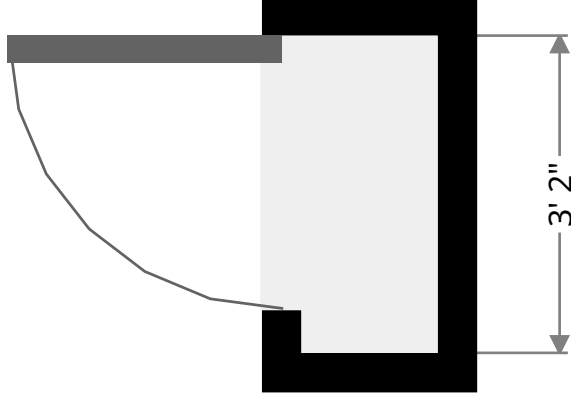
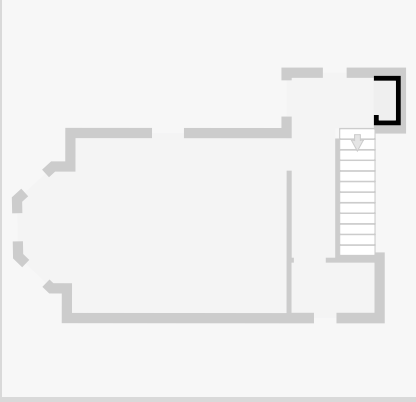
- Height: 7' 1 1/4"



THIS FLOORPLAN IS PROVIDED WITHOUT WARRANTY OF ANY KIND. NAZCA PROPERTIES  
DISCLAIMS ANY WARRANTY INCLUDING, WITHOUT LIMITATION, SATISFACTORY QUALITY OR  
ACCURACY OF DIMENSIONS.

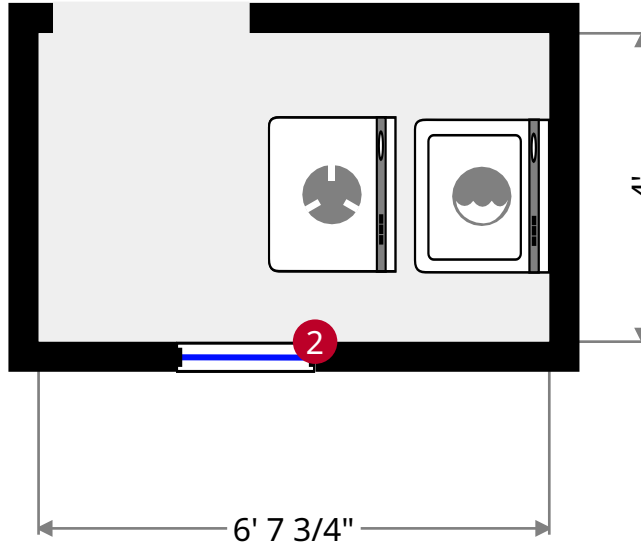
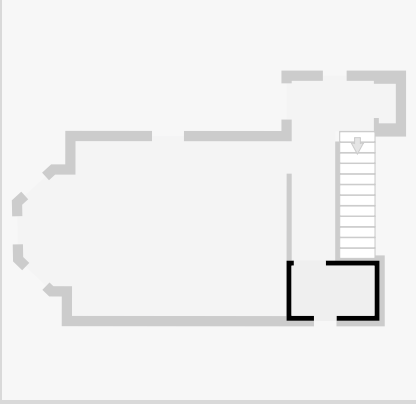
# Closet

Width: 1' 4 1/4"  
Length: 3' 2"  
Area: 4.30 sq ft  
Perimeter: 9' 1/2"



# Laundry Room

Width: 4'  
Length: 6' 7 3/4"  
Area: 26.62 sq ft  
Perimeter: 21' 3 1/2"



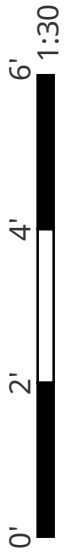
2



Fixed Window

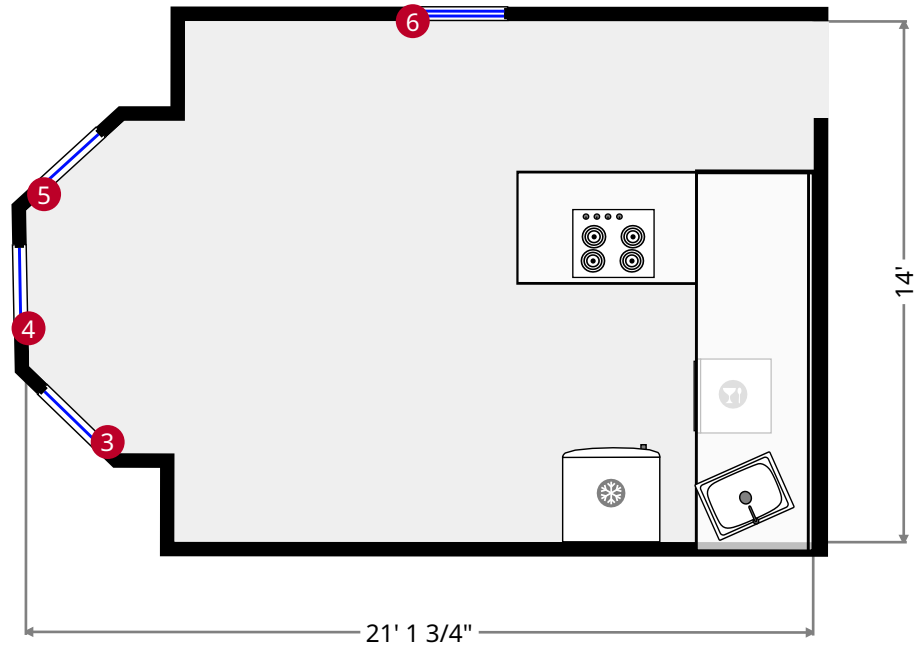
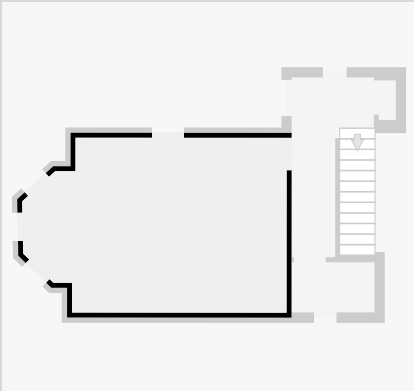
- Height: 2' 4"

THIS FLOORPLAN IS PROVIDED WITHOUT WARRANTY OF ANY KIND. NAZCA PROPERTIES  
DISCLAIMS ANY WARRANTY INCLUDING, WITHOUT LIMITATION, SATISFACTORY QUALITY OR  
ACCURACY OF DIMENSIONS.



# Kitchen

Width: 14'  
 Length: 21' 1 3/4"  
 Area: 268.69 sq ft  
 Perimeter: 67' 4"  
 Ceiling Height: 11' 4"



- 3

//

Fixed Window

- Height: 7' 1 3/4"
- 4

//

Fixed Window

- Height: 7' 1"
- 5

//

Fixed Window

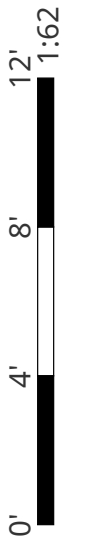
- Height: 7' 1 1/4"
- 6

↑

Hung Window

- Height: 7' 2 1/2"

THIS FLOORPLAN IS PROVIDED WITHOUT WARRANTY OF ANY KIND. NAZCA PROPERTIES DISCLAIMS ANY WARRANTY INCLUDING, WITHOUT LIMITATION, SATISFACTORY QUALITY OR ACCURACY OF DIMENSIONS.



# 2715 Euclid Ave. Apt. 1

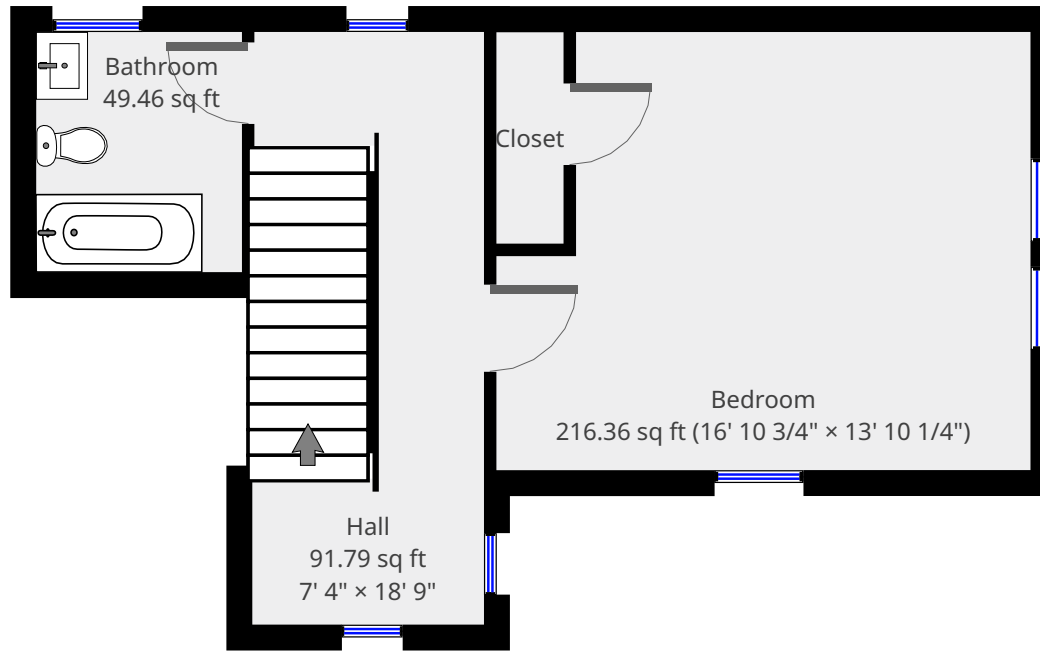
## 2nd Floor



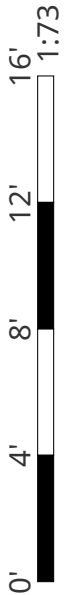
**Nazca Properties**  
manager@nazcaproperties.com  
513-535-2154

### Statistics

Area: 1280 sq ft  
3 Floors  
3 Bedrooms  
2 Bathrooms

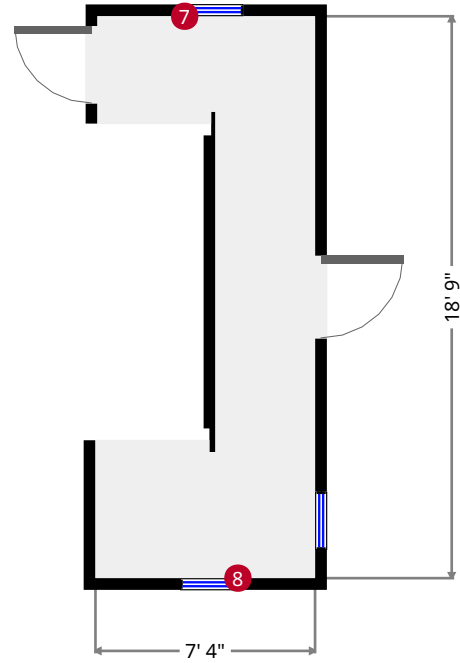
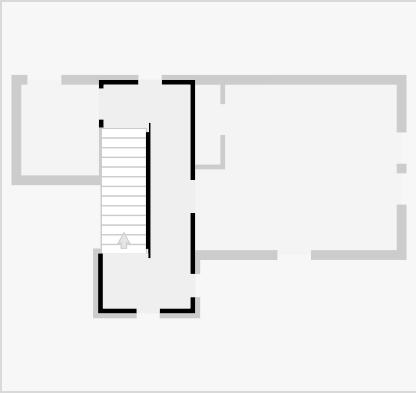


THIS FLOORPLAN IS PROVIDED WITHOUT WARRANTY OF ANY KIND. NAZCA PROPERTIES  
DISCLAIMS ANY WARRANTY INCLUDING, WITHOUT LIMITATION, SATISFACTORY QUALITY OR  
ACCURACY OF DIMENSIONS.



# Hall

Width: 7' 4"  
Length: 18' 9"  
Area: 91.79 sq ft  
Perimeter: 60' 1/2"  
Ceiling Height: 10' 3 1/2"



7



Hung Window

- Height: 6' 9 1/4"

8



Hung Window

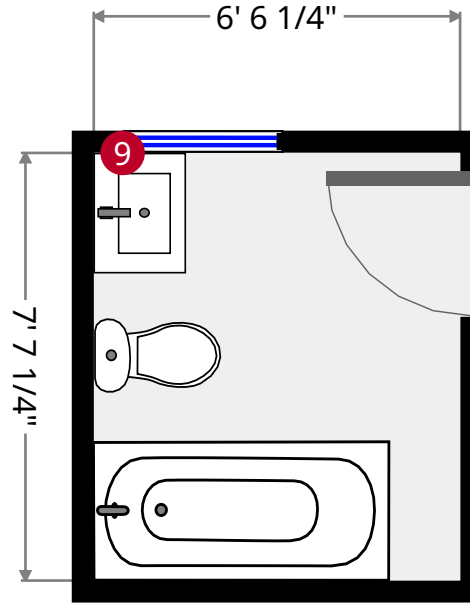
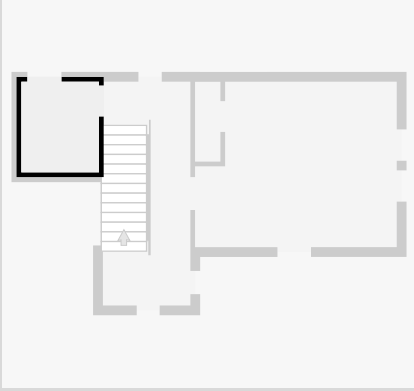
- Height: 6' 9 1/4"

THIS FLOORPLAN IS PROVIDED WITHOUT WARRANTY OF ANY KIND. NAZCA PROPERTIES  
DISCLAIMS ANY WARRANTY INCLUDING, WITHOUT LIMITATION, SATISFACTORY QUALITY OR  
ACCURACY OF DIMENSIONS.



# Bathroom

Width: 6' 6 1/4"  
 Length: 7' 7 1/4"  
 Area: 49.46 sq ft  
 Perimeter: 28' 2 1/2"  
 Ceiling Height: 7' 9 1/2"



9



Hung Window

- Height: 2' 9"

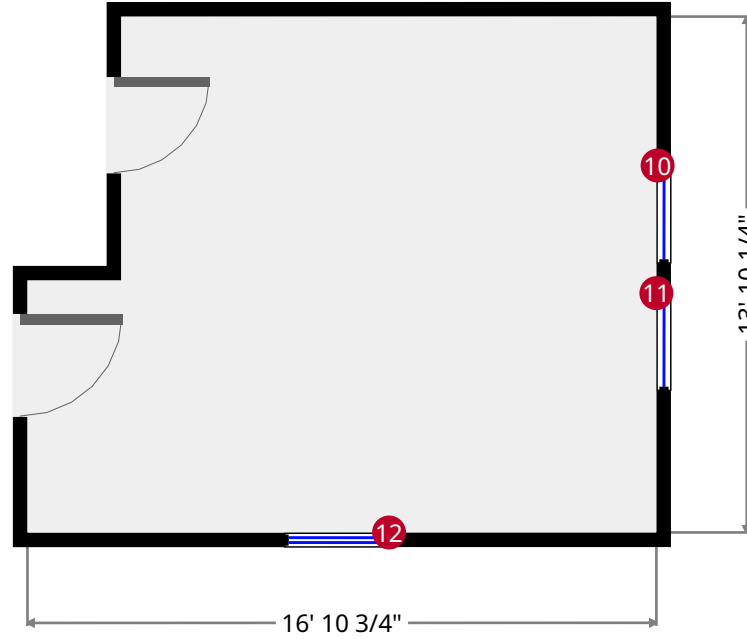
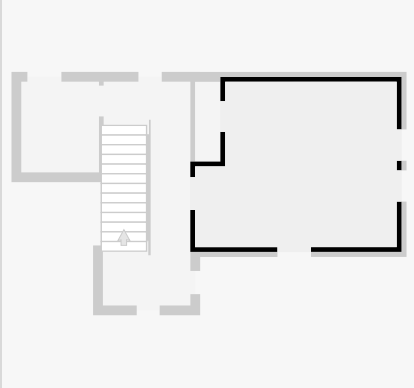
THIS FLOORPLAN IS PROVIDED WITHOUT WARRANTY OF ANY KIND. NAZCA PROPERTIES  
 DISCLAIMS ANY WARRANTY INCLUDING, WITHOUT LIMITATION, SATISFACTORY QUALITY OR  
 ACCURACY OF DIMENSIONS.





# Bedroom

Width: 13' 10 1/4"  
 Length: 16' 10 3/4"  
 Area: 216.36 sq ft  
 Perimeter: 61' 6 1/4"  
 Ceiling Height: 10' 4"



10



Fixed Window

- Height: 6' 9"

11



Fixed Window

- Height: 6' 9"

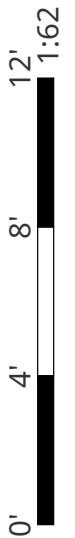
12



Hung Window

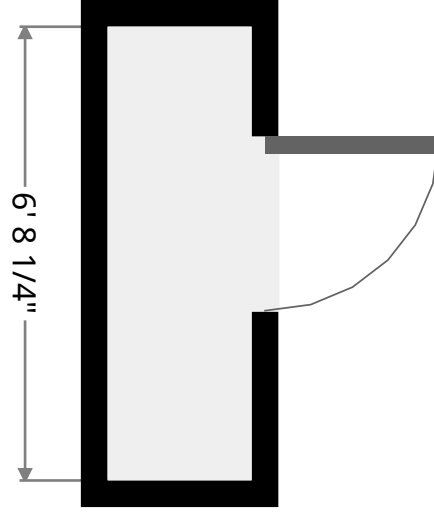
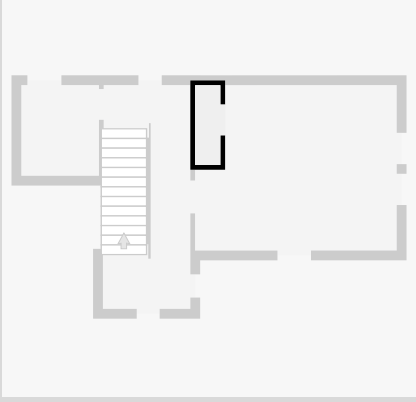
- Height: 6' 8 3/4"

THIS FLOORPLAN IS PROVIDED WITHOUT WARRANTY OF ANY KIND. NAZCA PROPERTIES  
 DISCLAIMS ANY WARRANTY INCLUDING, WITHOUT LIMITATION, SATISFACTORY QUALITY OR  
 ACCURACY OF DIMENSIONS.



# Closet

Width: 2' 1 1/2"  
Length: 6' 8 1/4"  
Area: 14.22 sq ft  
Perimeter: 17' 7 1/2"



THIS FLOORPLAN IS PROVIDED WITHOUT WARRANTY OF ANY KIND. NAZCA PROPERTIES  
DISCLAIMS ANY WARRANTY INCLUDING, WITHOUT LIMITATION, SATISFACTORY QUALITY OR  
ACCURACY OF DIMENSIONS.

# 2715 Euclid Ave. Apt. 1

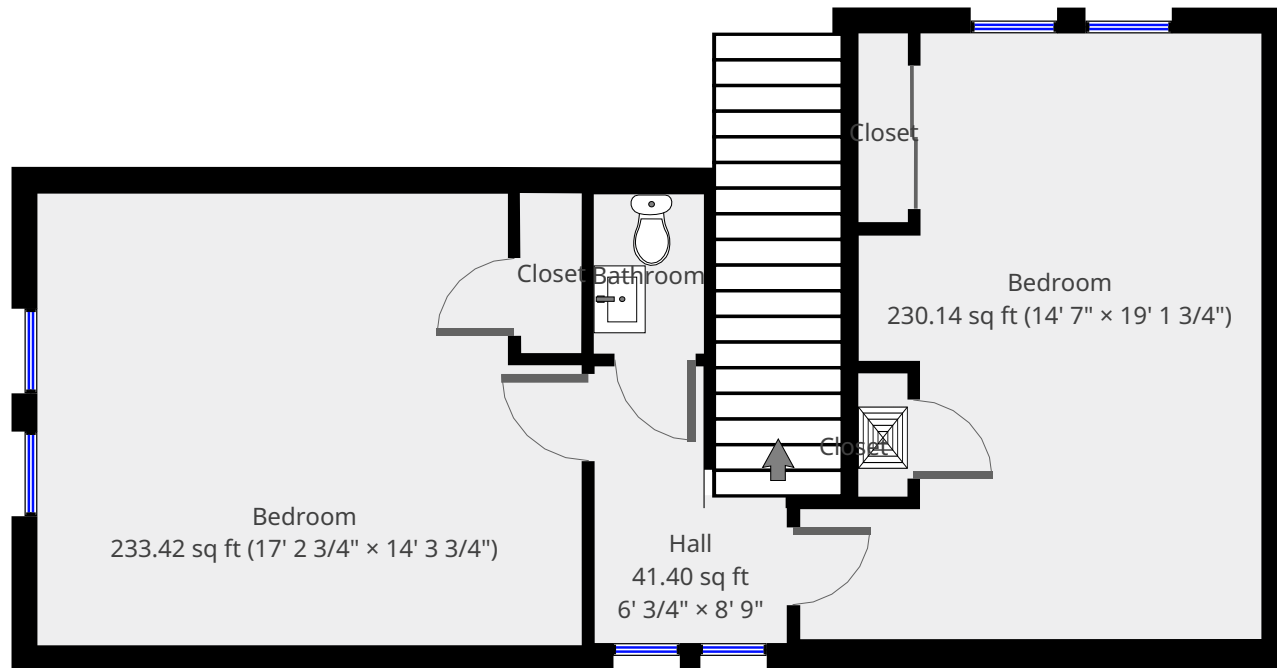
3rd Floor



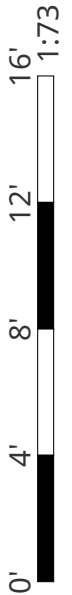
**Nazca Properties**  
manager@nazcaproperties.com  
513-535-2154

## Statistics

Area: 1280 sq ft  
3 Floors  
3 Bedrooms  
2 Bathrooms

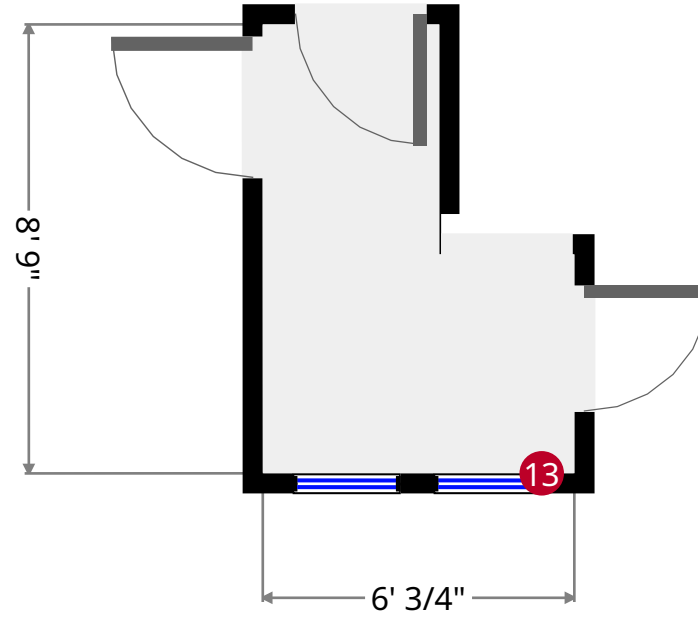
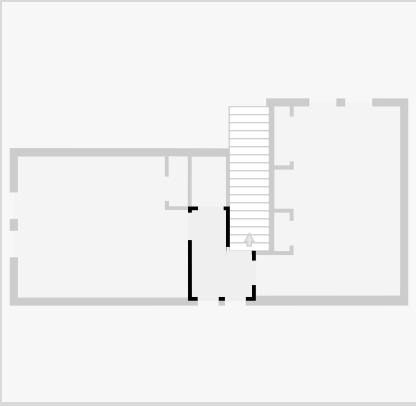


THIS FLOORPLAN IS PROVIDED WITHOUT WARRANTY OF ANY KIND. NAZCA PROPERTIES  
DISCLAIMS ANY WARRANTY INCLUDING, WITHOUT LIMITATION, SATISFACTORY QUALITY OR  
ACCURACY OF DIMENSIONS.



# Hall

Width: 6' 3/4"  
Length: 8' 9"  
Area: 41.40 sq ft  
Perimeter: 29' 8"



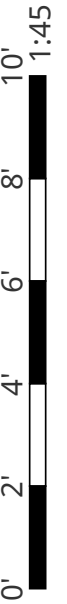
13



Hung Window

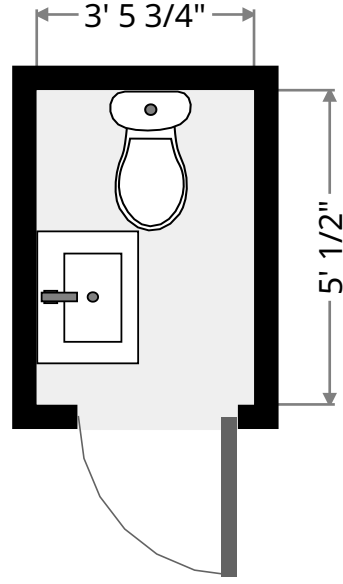
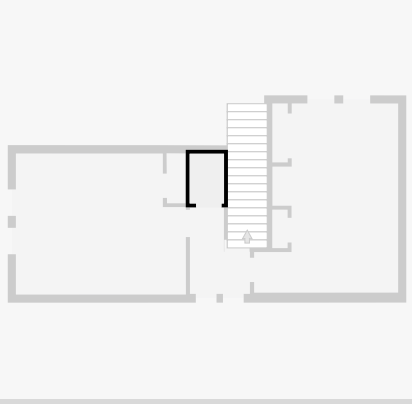
- Height: 2' 10 1/2"

THIS FLOORPLAN IS PROVIDED WITHOUT WARRANTY OF ANY KIND. NAZCA PROPERTIES  
DISCLAIMS ANY WARRANTY INCLUDING, WITHOUT LIMITATION, SATISFACTORY QUALITY OR  
ACCURACY OF DIMENSIONS.



# Bathroom

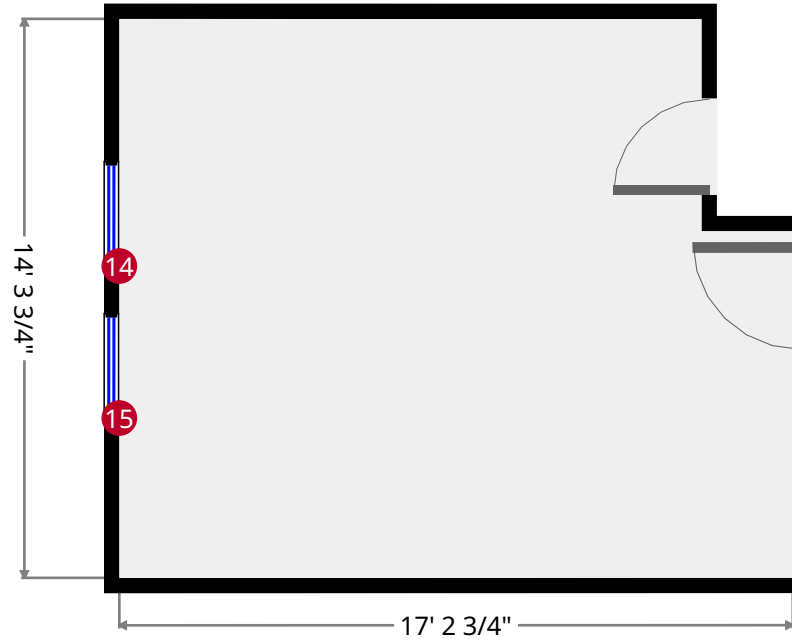
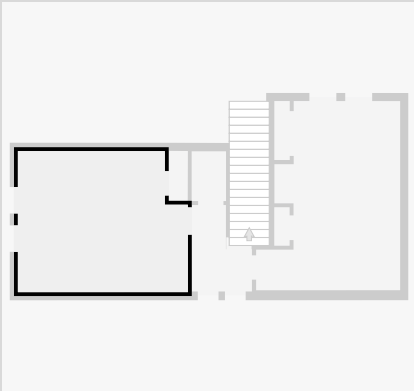
Width: 3' 5 3/4"  
Length: 5' 1/2"  
Area: 17.56 sq ft  
Perimeter: 17' 1/2"



THIS FLOORPLAN IS PROVIDED WITHOUT WARRANTY OF ANY KIND. NAZCA PROPERTIES  
DISCLAIMS ANY WARRANTY INCLUDING, WITHOUT LIMITATION, SATISFACTORY QUALITY OR  
ACCURACY OF DIMENSIONS.

# Bedroom

Width: 14' 3 3/4"  
Length: 17' 2 3/4"  
Area: 233.42 sq ft  
Perimeter: 63' 1/4"  
Ceiling Height: 8' 6"



14



Hung Window

- Height: 3' 5"

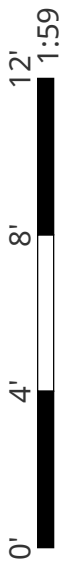
15



Hung Window

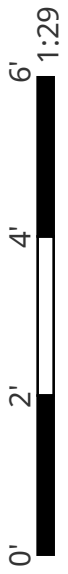
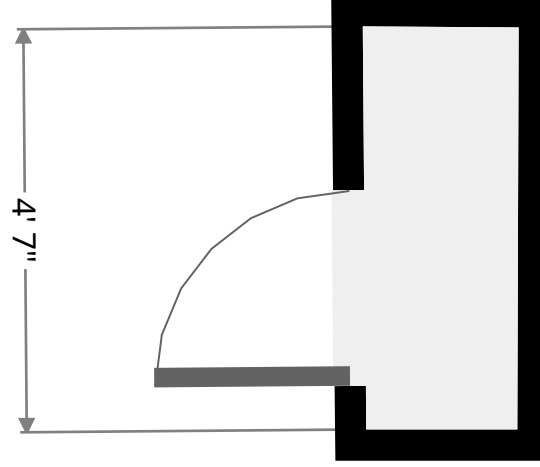
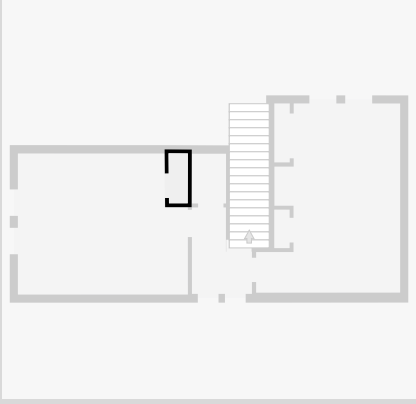
- Height: 3' 5"

THIS FLOORPLAN IS PROVIDED WITHOUT WARRANTY OF ANY KIND. NAZCA PROPERTIES  
DISCLAIMS ANY WARRANTY INCLUDING, WITHOUT LIMITATION, SATISFACTORY QUALITY OR  
ACCURACY OF DIMENSIONS.



# Closet

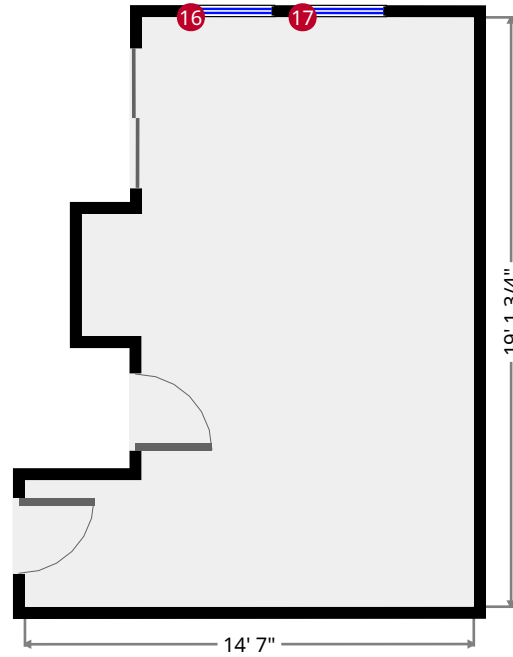
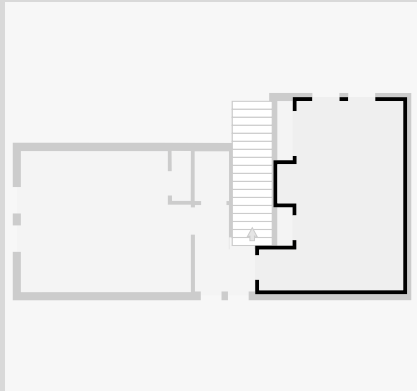
Width: 1' 11 1/2"  
Length: 5' 3/4"  
Area: 9.76 sq ft  
Perimeter: 13' 11 3/4"



THIS FLOORPLAN IS PROVIDED WITHOUT WARRANTY OF ANY KIND. NAZCA PROPERTIES  
DISCLAIMS ANY WARRANTY INCLUDING, WITHOUT LIMITATION, SATISFACTORY QUALITY OR  
ACCURACY OF DIMENSIONS.

# Bedroom

Width: 14' 7"  
Length: 19' 1 3/4"  
Area: 230.14 sq ft  
Perimeter: 71' 4 1/2"  
Ceiling Height: 8' 6 1/4"



16



Hung Window

- Height: 3' 4 3/4"

17



Hung Window

- Height: 3' 4 3/4"

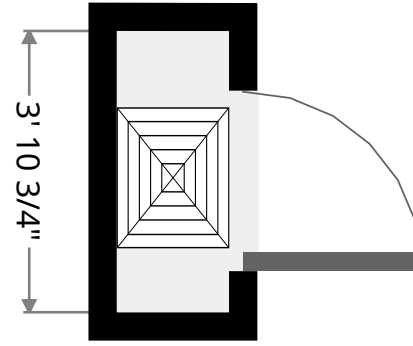
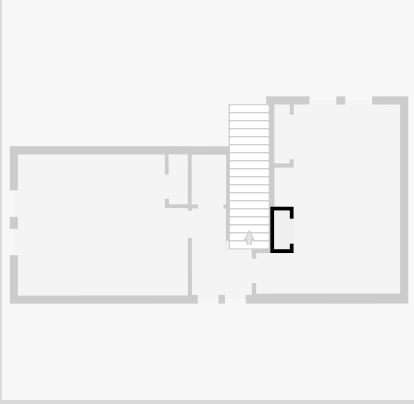
THIS FLOORPLAN IS PROVIDED WITHOUT WARRANTY OF ANY KIND. NAZCA PROPERTIES  
DISCLAIMS ANY WARRANTY INCLUDING, WITHOUT LIMITATION, SATISFACTORY QUALITY OR  
ACCURACY OF DIMENSIONS.





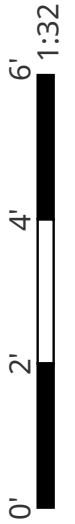
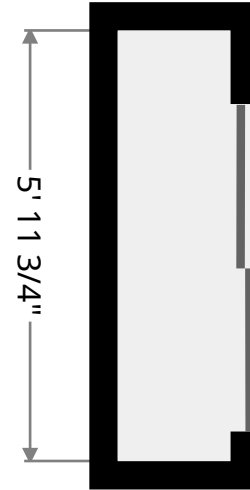
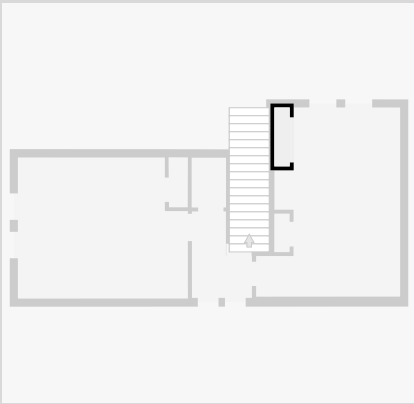
## Closet

Width: 1' 6 3/4"  
Length: 3' 10 3/4"  
Area: 6.06 sq ft  
Perimeter: 10' 11"



## Closet

Width: 1' 6 3/4"  
Length: 5' 11 3/4"  
Area: 9.32 sq ft  
Perimeter: 15' 3/4"



THIS FLOORPLAN IS PROVIDED WITHOUT WARRANTY OF ANY KIND. NAZCA PROPERTIES  
DISCLAIMS ANY WARRANTY INCLUDING, WITHOUT LIMITATION, SATISFACTORY QUALITY OR  
ACCURACY OF DIMENSIONS.