

# 2715 Euclid Ave. Apt. 2

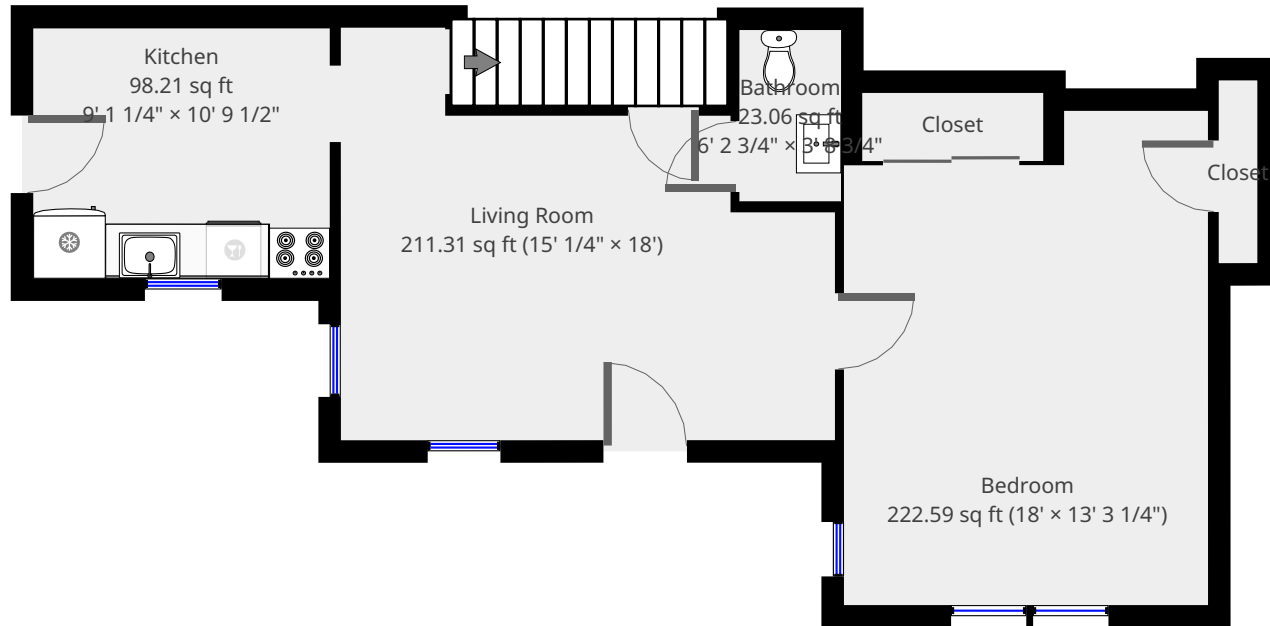


**Nazca Properties**  
manager@nazcaproperties.com  
513-535-2154

## Statistics

Area: 1226 sq ft  
3 Floors  
3 Bedrooms  
2 Bathrooms

## 1st Floor

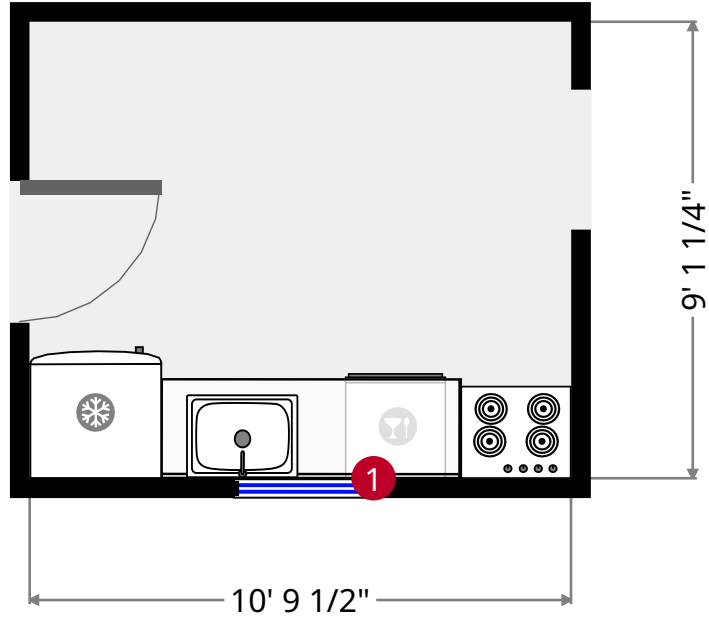
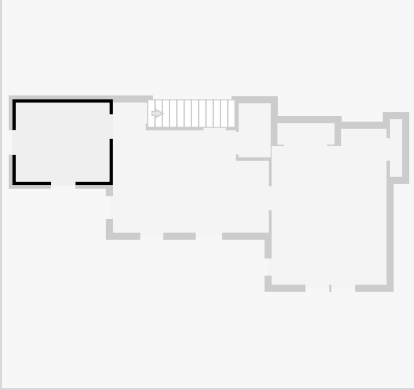


THIS FLOORPLAN IS PROVIDED WITHOUT WARRANTY OF ANY KIND. NAZCA PROPERTIES  
DISCLAIMS ANY WARRANTY INCLUDING, WITHOUT LIMITATION, SATISFACTORY QUALITY OR  
ACCURACY OF DIMENSIONS.



# Kitchen

Width: 9' 1 1/4"  
Length: 10' 9 1/2"  
Area: 98.21 sq ft  
Perimeter: 39' 9 1/2"  
Ceiling Height: 10' 3 1/2"



1



Hung Window

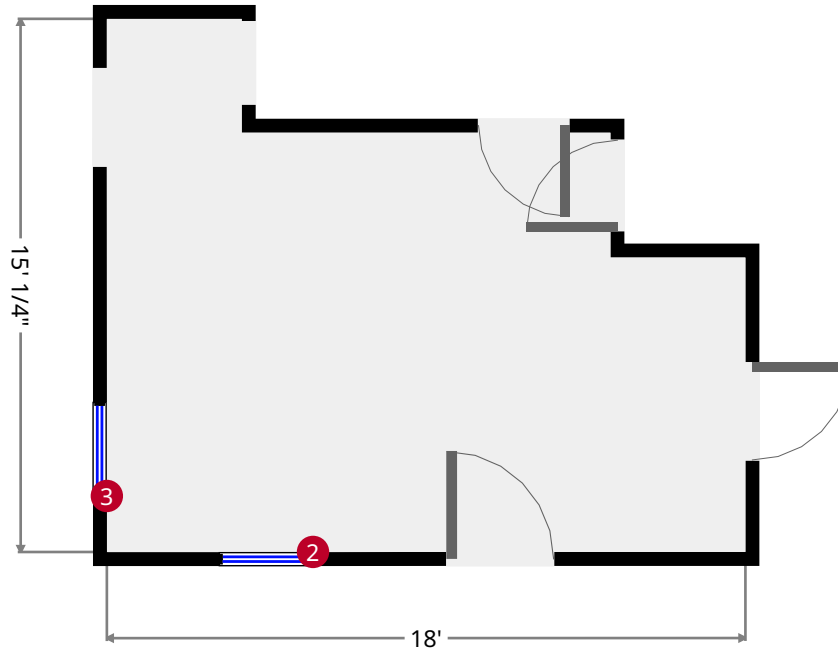
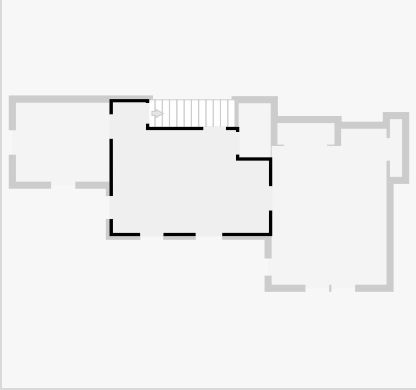
- Height: 5' 11 3/4"

THIS FLOORPLAN IS PROVIDED WITHOUT WARRANTY OF ANY KIND. NAZCA PROPERTIES  
DISCLAIMS ANY WARRANTY INCLUDING, WITHOUT LIMITATION, SATISFACTORY QUALITY OR  
ACCURACY OF DIMENSIONS.



# Living Room

Width: 15' 1/4"  
Length: 18'  
Area: 211.31 sq ft  
Perimeter: 66' 1/4"  
Ceiling Height: 11' 3"



2



Hung Window

- Height: 6' 3 1/2"

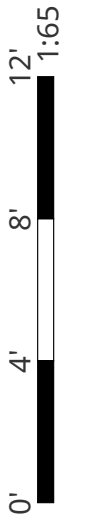
3



Hung Window

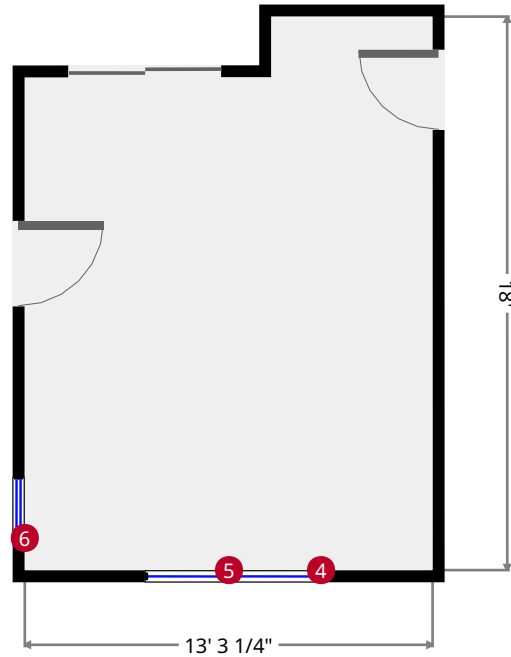
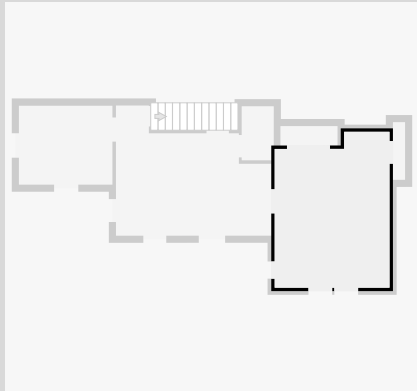
- Height: 6' 3 1/2"

THIS FLOORPLAN IS PROVIDED WITHOUT WARRANTY OF ANY KIND. NAZCA PROPERTIES  
DISCLAIMS ANY WARRANTY INCLUDING, WITHOUT LIMITATION, SATISFACTORY QUALITY OR  
ACCURACY OF DIMENSIONS.



# Bedroom

Width: 13' 3 1/4"  
 Length: 18'  
 Area: 222.59 sq ft  
 Perimeter: 62' 5 3/4"  
 Ceiling Height: 11' 2 1/2"



- 4
Fixed Window
- Height: 6' 10"

---

- 5
Fixed Window
- Height: 6' 9 3/4"

---

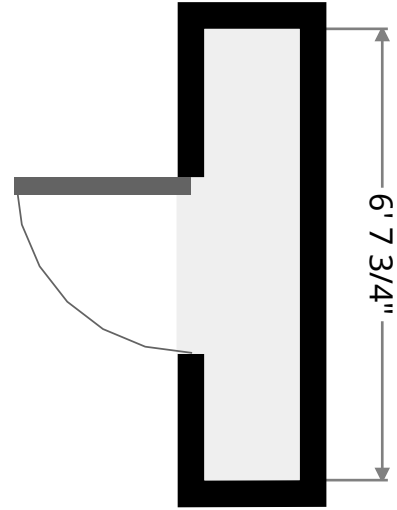
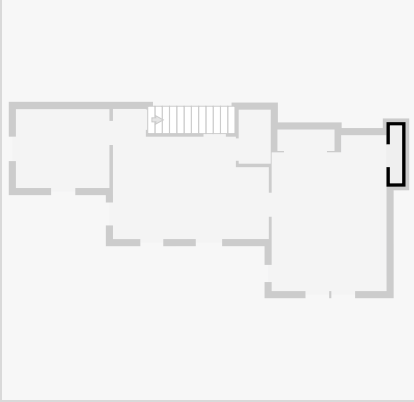
- 6
Hung Window
- Height: 7' 4"

THIS FLOORPLAN IS PROVIDED WITHOUT WARRANTY OF ANY KIND. NAZCA PROPERTIES DISCLAIMS ANY WARRANTY INCLUDING, WITHOUT LIMITATION, SATISFACTORY QUALITY OR ACCURACY OF DIMENSIONS.



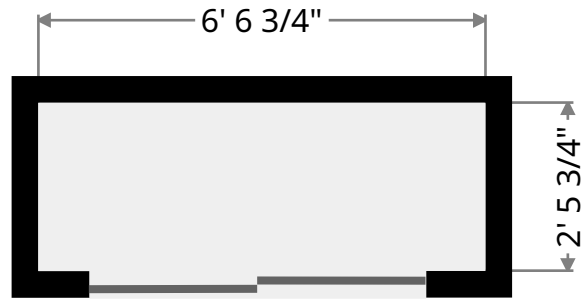
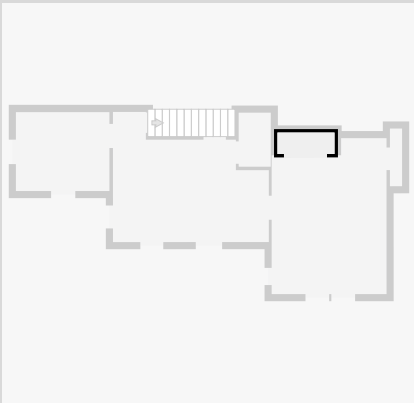
## Closet

Width: 1' 4 3/4"  
Length: 6' 7 3/4"  
Area: 9.34 sq ft  
Perimeter: 16' 1 1/4"



## Closet

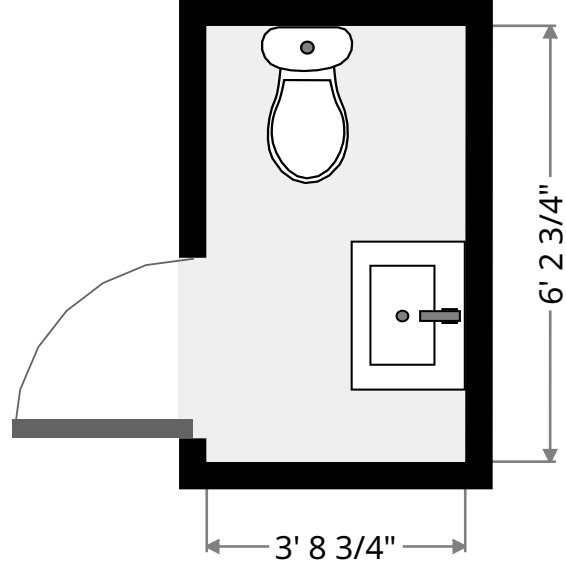
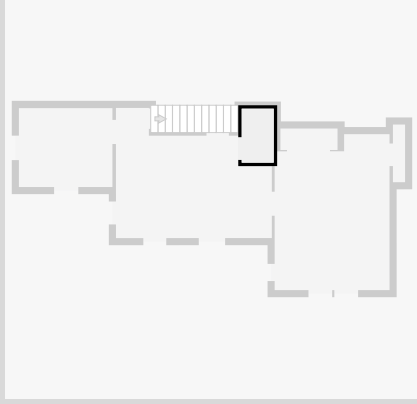
Width: 2' 5 3/4"  
Length: 6' 6 3/4"  
Area: 16.33 sq ft  
Perimeter: 18' 1 1/2"



THIS FLOORPLAN IS PROVIDED WITHOUT WARRANTY OF ANY KIND. NAZCA PROPERTIES  
DISCLAIMS ANY WARRANTY INCLUDING, WITHOUT LIMITATION, SATISFACTORY QUALITY OR  
ACCURACY OF DIMENSIONS.

# Bathroom

Width: 3' 8 3/4"  
Length: 6' 2 3/4"  
Area: 23.06 sq ft  
Perimeter: 19' 10 1/2"



THIS FLOORPLAN IS PROVIDED WITHOUT WARRANTY OF ANY KIND. NAZCA PROPERTIES  
DISCLAIMS ANY WARRANTY INCLUDING, WITHOUT LIMITATION, SATISFACTORY QUALITY OR  
ACCURACY OF DIMENSIONS.

# 2715 Euclid Ave. Apt. 2

## 2nd Floor



**Nazca Properties**  
manager@nazcaproperties.com  
513-535-2154

### Statistics

Area: 1226 sq ft  
3 Floors  
3 Bedrooms  
2 Bathrooms

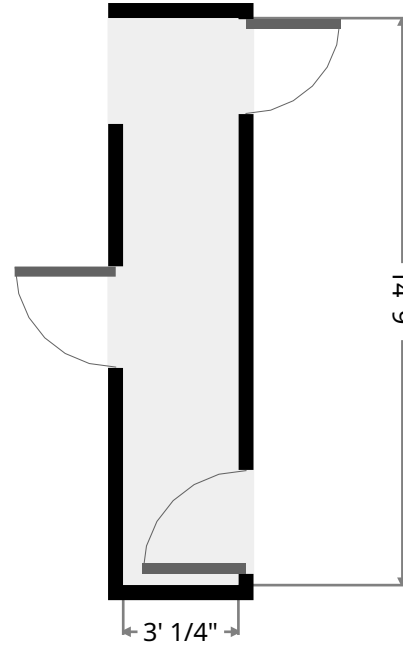
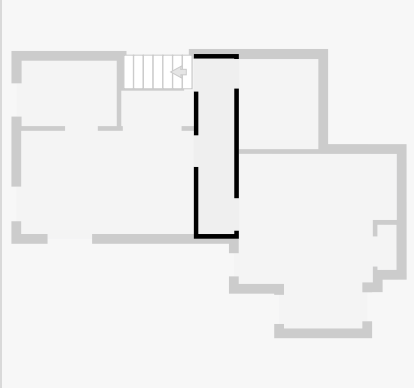


THIS FLOORPLAN IS PROVIDED WITHOUT WARRANTY OF ANY KIND. NAZCA PROPERTIES  
DISCLAIMS ANY WARRANTY INCLUDING, WITHOUT LIMITATION, SATISFACTORY QUALITY OR  
ACCURACY OF DIMENSIONS.



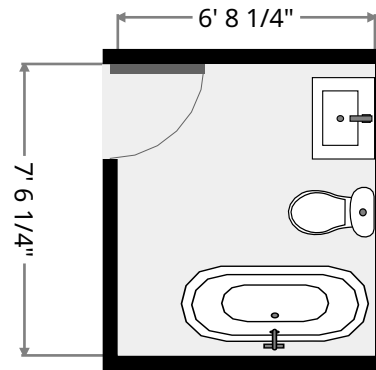
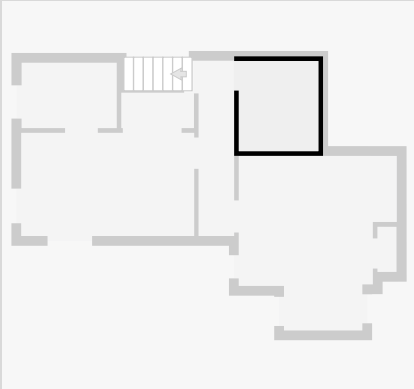
## Hall

Width: 3' 1/4"  
Length: 14' 9"  
Area: 44.14 sq ft  
Perimeter: 35' 5 3/4"  
Ceiling Height: 10' 2 1/2"

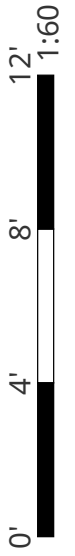


## Bathroom

Width: 6' 8 1/4"  
Length: 7' 7"  
Area: 50.67 sq ft  
Perimeter: 28' 6 1/4"  
Ceiling Height: 7' 9"



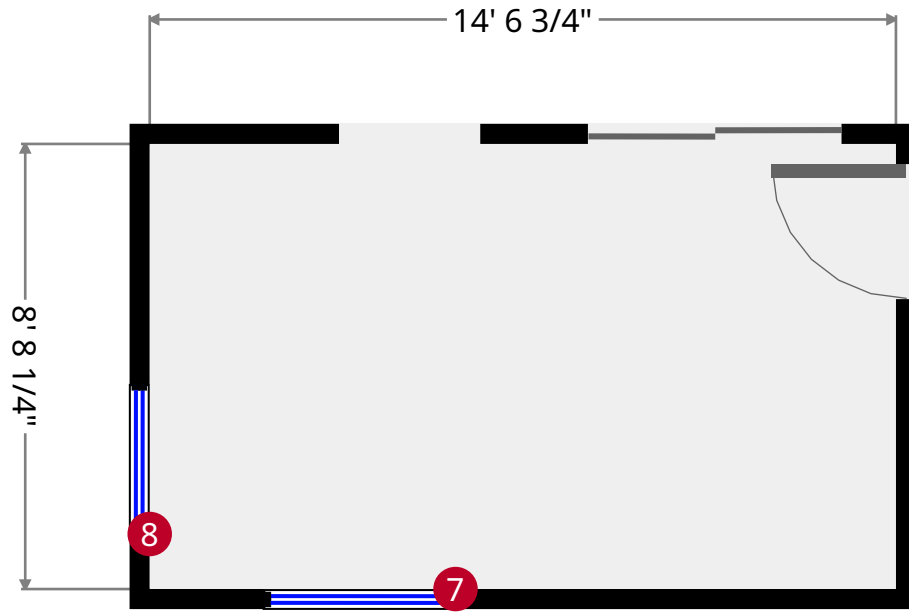
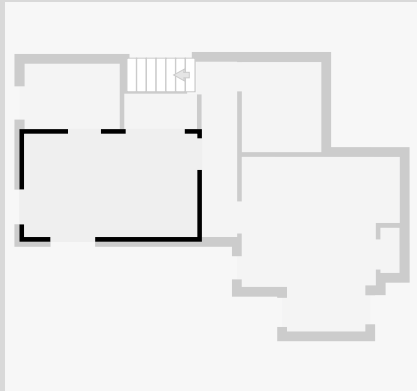
THIS FLOORPLAN IS PROVIDED WITHOUT WARRANTY OF ANY KIND. NAZCA PROPERTIES  
DISCLAIMS ANY WARRANTY INCLUDING, WITHOUT LIMITATION, SATISFACTORY QUALITY OR  
ACCURACY OF DIMENSIONS.





# Bedroom

Width: 8' 8 1/4"  
Length: 14' 6 3/4"  
Area: 126.34 sq ft  
Perimeter: 46' 5 3/4"  
Ceiling Height: 10' 2"



7



Hung Window

- Height: 6' 4 1/4"

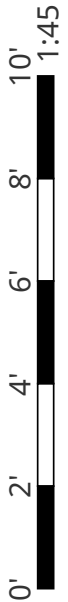
8



Hung Window

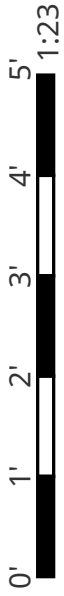
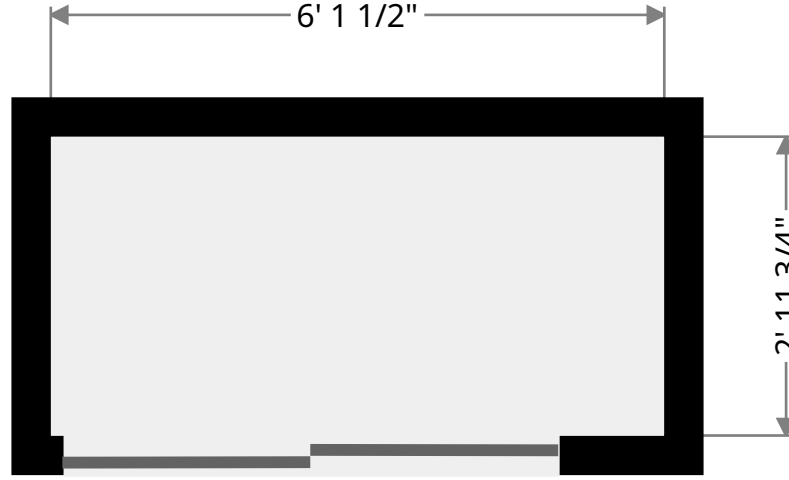
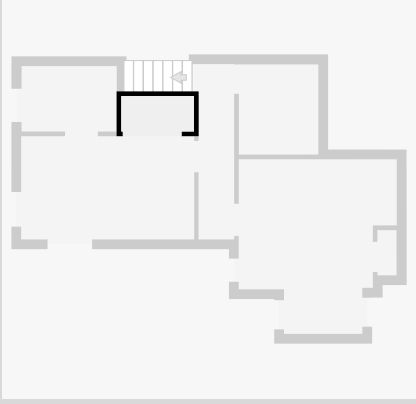
- Height: 6' 3"

THIS FLOORPLAN IS PROVIDED WITHOUT WARRANTY OF ANY KIND. NAZCA PROPERTIES  
DISCLAIMS ANY WARRANTY INCLUDING, WITHOUT LIMITATION, SATISFACTORY QUALITY OR  
ACCURACY OF DIMENSIONS.



# Closet

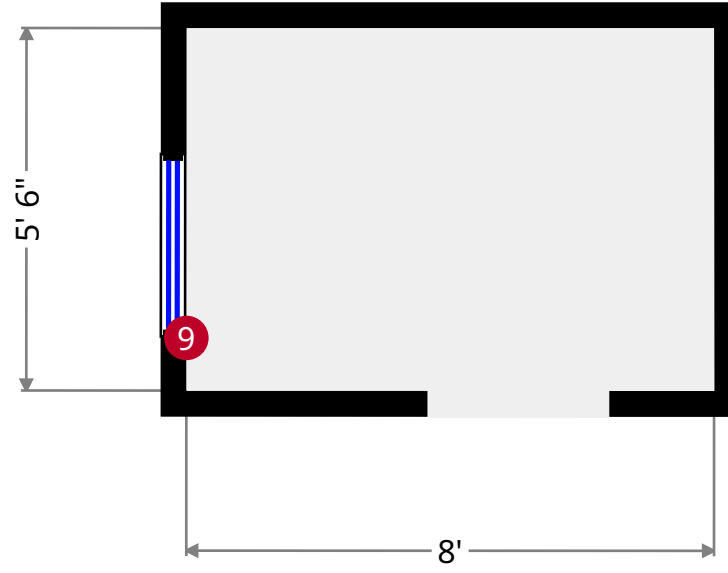
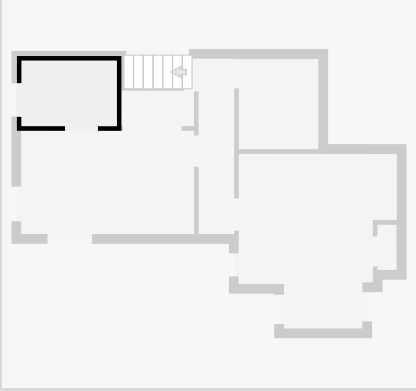
Width: 2' 11 3/4"  
Length: 6' 1 1/2"  
Area: 18.22 sq ft  
Perimeter: 18' 2 1/4"



THIS FLOORPLAN IS PROVIDED WITHOUT WARRANTY OF ANY KIND. NAZCA PROPERTIES  
DISCLAIMS ANY WARRANTY INCLUDING, WITHOUT LIMITATION, SATISFACTORY QUALITY OR  
ACCURACY OF DIMENSIONS.

# Study

Width: 5' 6"  
Length: 8'  
Area: 44.01 sq ft  
Perimeter: 27'  
Ceiling Height: 10' 3 1/4"



9



Hung Window

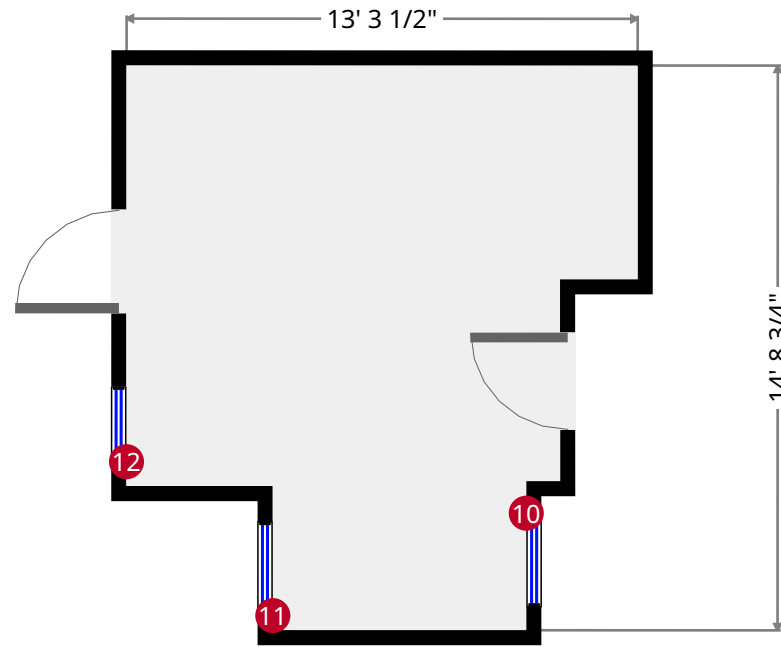
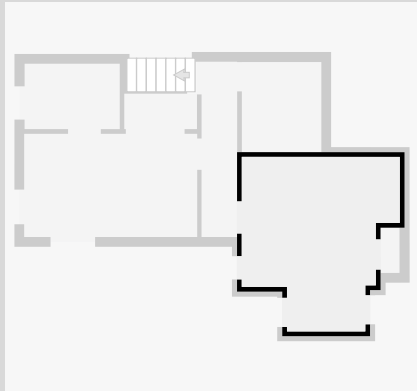
- Height: 6' 1 1/4"



THIS FLOORPLAN IS PROVIDED WITHOUT WARRANTY OF ANY KIND. NAZCA PROPERTIES  
DISCLAIMS ANY WARRANTY INCLUDING, WITHOUT LIMITATION, SATISFACTORY QUALITY OR  
ACCURACY OF DIMENSIONS.

# Bedroom

Width: 13' 3 1/2"  
 Length: 14' 8 3/4"  
 Area: 159.14 sq ft  
 Perimeter: 55' 11 1/2"  
 Ceiling Height: 10' 4 1/4"



10



Hung Window

- Height: 6' 9 1/4"

11



Hung Window

- Height: 6' 9 1/4"

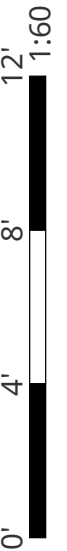
12



Hung Window

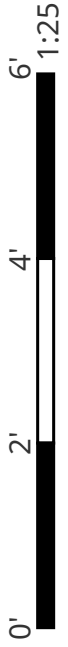
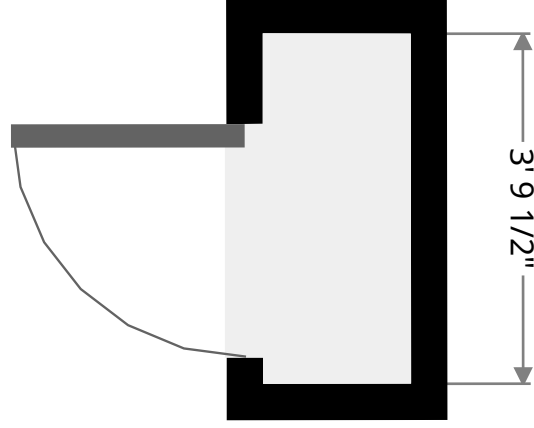
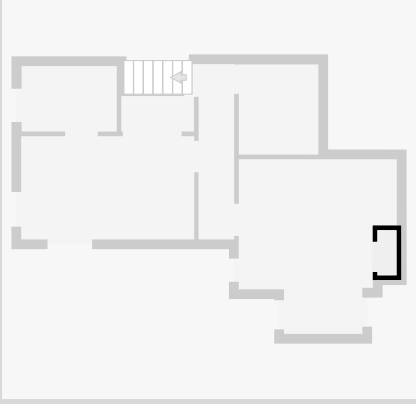
- Height: 6' 8"

THIS FLOORPLAN IS PROVIDED WITHOUT WARRANTY OF ANY KIND. NAZCA PROPERTIES  
 DISCLAIMS ANY WARRANTY INCLUDING, WITHOUT LIMITATION, SATISFACTORY QUALITY OR  
 ACCURACY OF DIMENSIONS.



# Closet

Width: 1' 7 1/4"  
Length: 3' 9 1/2"  
Area: 6.09 sq ft  
Perimeter: 10' 9 1/2"



THIS FLOORPLAN IS PROVIDED WITHOUT WARRANTY OF ANY KIND. NAZCA PROPERTIES  
DISCLAIMS ANY WARRANTY INCLUDING, WITHOUT LIMITATION, SATISFACTORY QUALITY OR  
ACCURACY OF DIMENSIONS.

# 2715 Euclid Ave. Apt. 2

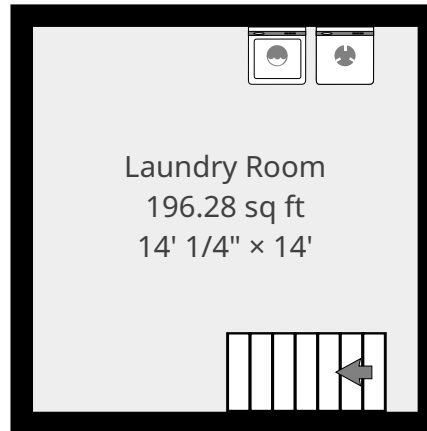


**Nazca Properties**  
manager@nazcaproperties.com  
513-535-2154

## Statistics

Area: 1226 sq ft  
3 Floors  
3 Bedrooms  
2 Bathrooms

## Basement

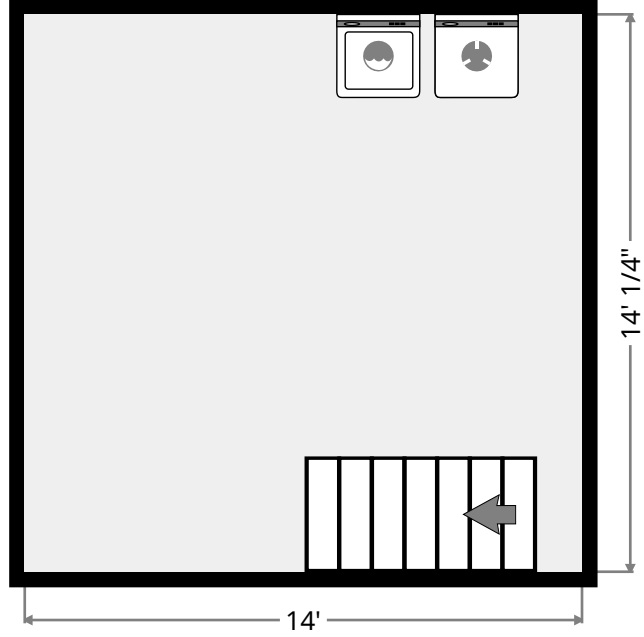
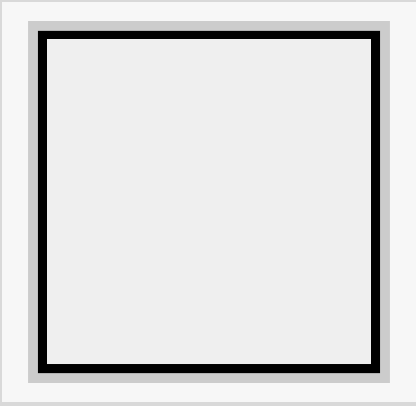


THIS FLOORPLAN IS PROVIDED WITHOUT WARRANTY OF ANY KIND. NAZCA PROPERTIES  
DISCLAIMS ANY WARRANTY INCLUDING, WITHOUT LIMITATION, SATISFACTORY QUALITY OR  
ACCURACY OF DIMENSIONS.



# Laundry Room

Width: 14'  
Length: 14' 1/4"  
Area: 196.28 sq ft  
Perimeter: 56' 1/2"



THIS FLOORPLAN IS PROVIDED WITHOUT WARRANTY OF ANY KIND. NAZCA PROPERTIES  
DISCLAIMS ANY WARRANTY INCLUDING, WITHOUT LIMITATION, SATISFACTORY QUALITY OR  
ACCURACY OF DIMENSIONS.