

# 502 Riddle Rd. Apt. 1

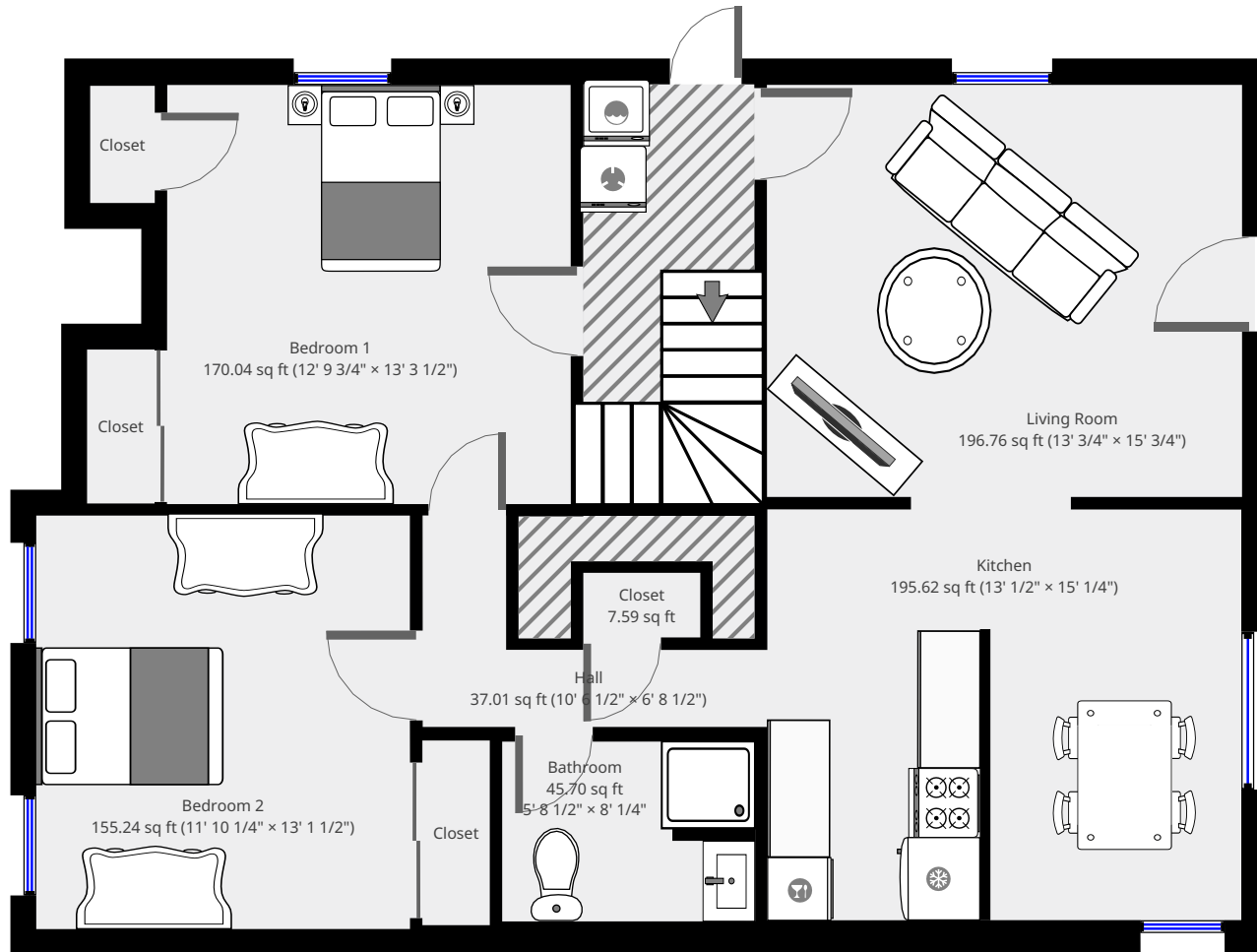
1st Floor



**Nazca Properties**  
manager@nazcaproperties.com  
513-535-2154

## Statistics

Area: 839 sq ft  
1 Floor  
2 Bedrooms  
1 Bathroom

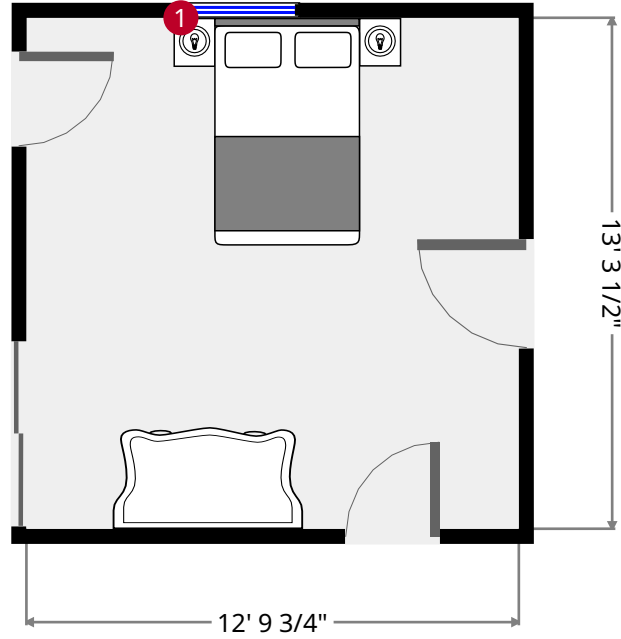
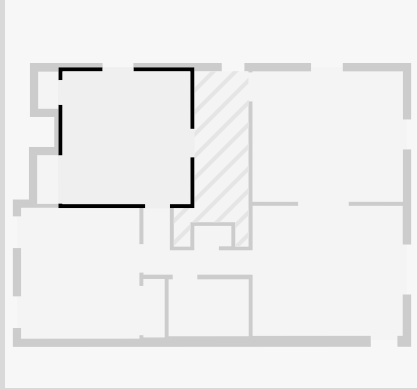


THIS FLOORPLAN IS PROVIDED WITHOUT WARRANTY OF ANY KIND. NAZCA PROPERTIES  
DISCLAIMS ANY WARRANTY INCLUDING, WITHOUT LIMITATION, SATISFACTORY QUALITY OR  
ACCURACY OF DIMENSIONS.



# Bedroom 1

Width: 12' 9 3/4"  
Length: 13' 3 1/2"  
Area: 170.04 sq ft  
Perimeter: 52' 2"  
Ceiling Height: 9' 4 1/2"



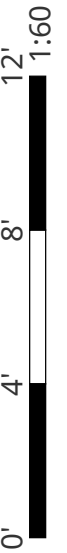
1



Hung Window

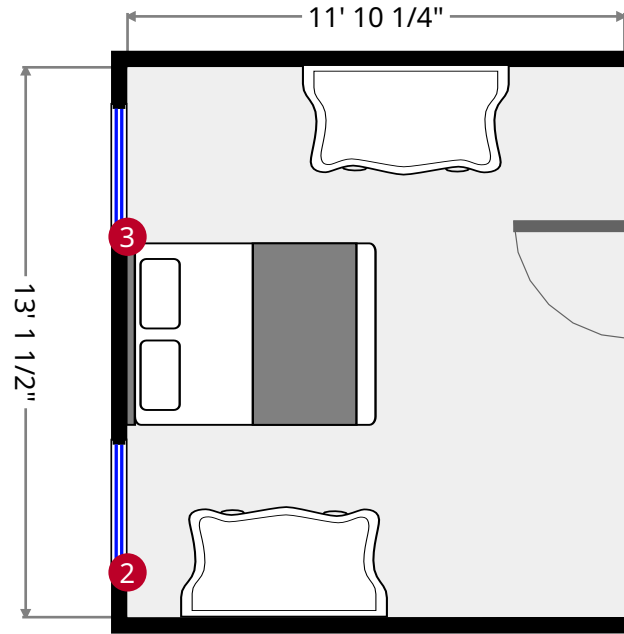
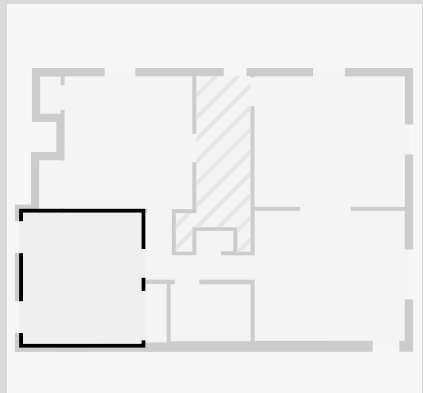
- Height: 5' 10"

THIS FLOORPLAN IS PROVIDED WITHOUT WARRANTY OF ANY KIND. NAZCA PROPERTIES  
DISCLAIMS ANY WARRANTY INCLUDING, WITHOUT LIMITATION, SATISFACTORY QUALITY OR  
ACCURACY OF DIMENSIONS.



# Bedroom 2

Width: 11' 10 1/4"  
 Length: 13' 1 1/2"  
 Area: 155.24 sq ft  
 Perimeter: 49' 10 3/4"  
 Ceiling Height: 9' 4 3/4"



2



Hung Window

- Height: 5' 11"

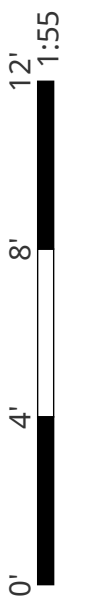
3



Hung Window

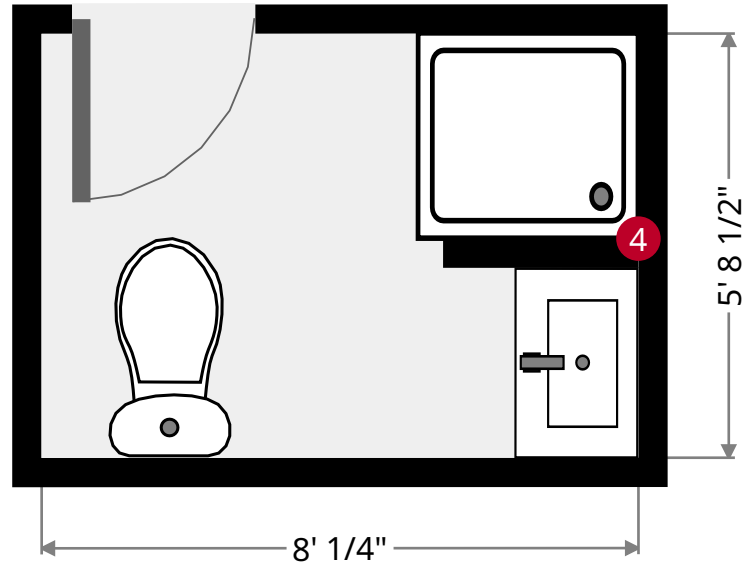
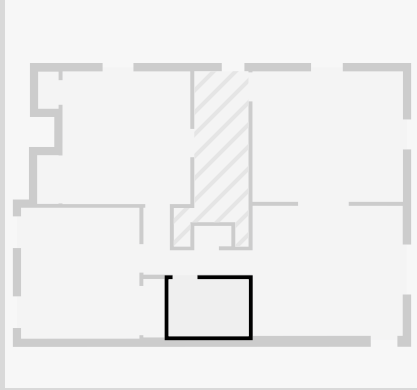
- Height: 5' 11"

THIS FLOORPLAN IS PROVIDED WITHOUT WARRANTY OF ANY KIND. NAZCA PROPERTIES  
 DISCLAIMS ANY WARRANTY INCLUDING, WITHOUT LIMITATION, SATISFACTORY QUALITY OR  
 ACCURACY OF DIMENSIONS.



# Bathroom

Width: 5' 8 1/2"  
Length: 8' 1/4"  
Area: 45.70 sq ft  
Perimeter: 27' 5 1/4"  
Ceiling Height: 8' 8 3/4"

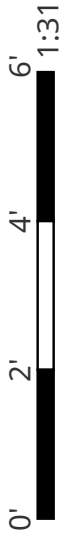


4



Partition Wall

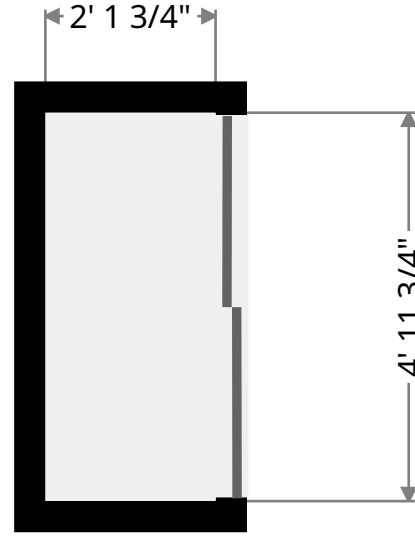
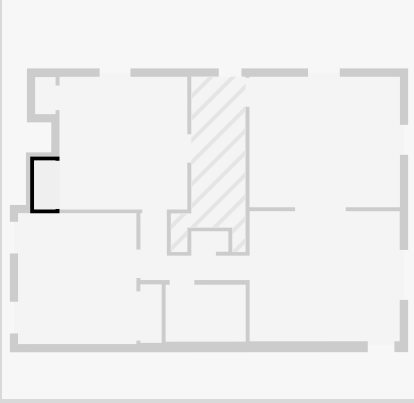
- Height: 8' 9"



THIS FLOORPLAN IS PROVIDED WITHOUT WARRANTY OF ANY KIND. NAZCA PROPERTIES  
DISCLAIMS ANY WARRANTY INCLUDING, WITHOUT LIMITATION, SATISFACTORY QUALITY OR  
ACCURACY OF DIMENSIONS.

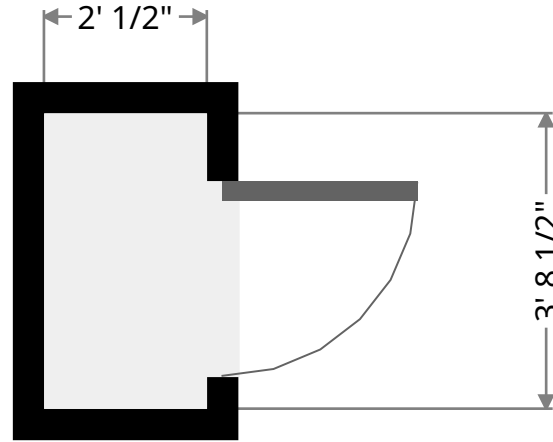
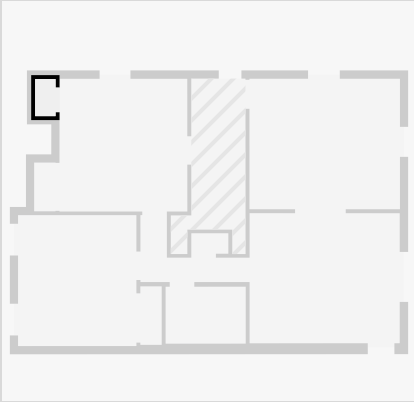
## Closet

Width: 2' 1 3/4"  
Length: 4' 10 1/2"  
Area: 10.44 sq ft  
Perimeter: 14' 1 1/2"

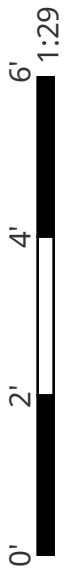


## Closet

Width: 2' 1/2"  
Length: 3' 8 1/2"  
Area: 7.60 sq ft  
Perimeter: 11' 6 1/4"

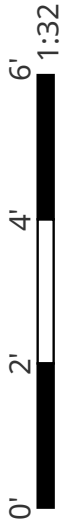
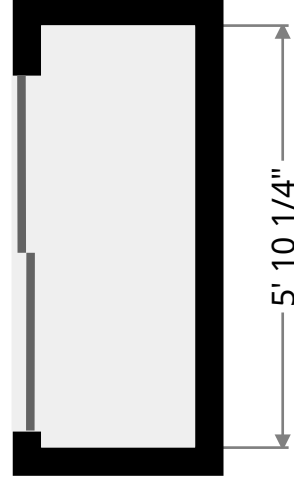
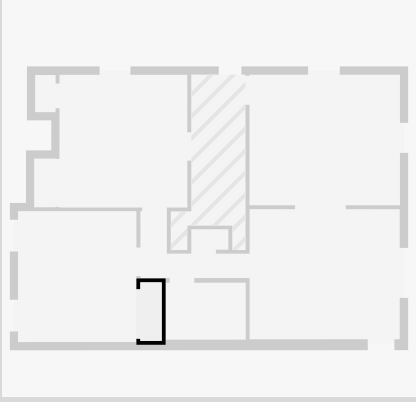


THIS FLOORPLAN IS PROVIDED WITHOUT WARRANTY OF ANY KIND. NAZCA PROPERTIES  
DISCLAIMS ANY WARRANTY INCLUDING, WITHOUT LIMITATION, SATISFACTORY QUALITY OR  
ACCURACY OF DIMENSIONS.



# Closet

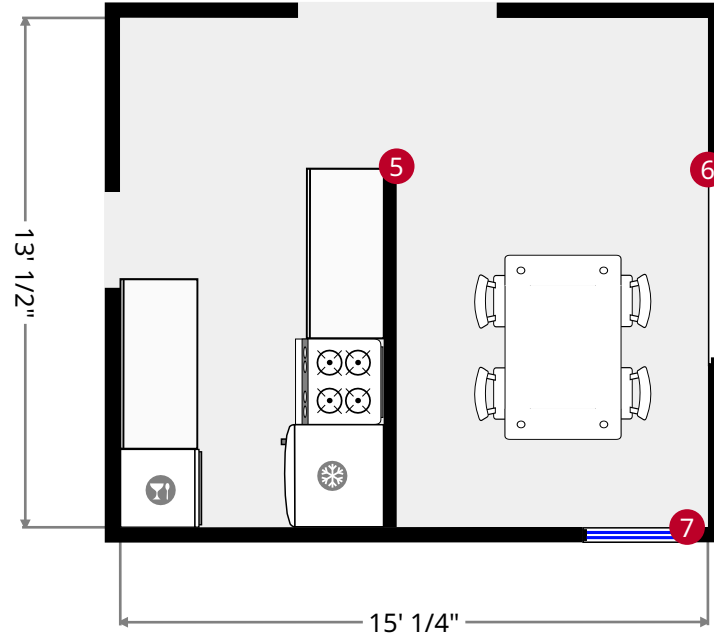
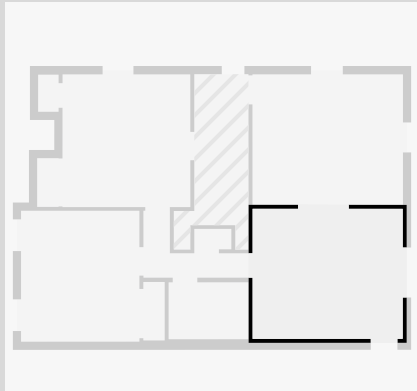
Width: 2' 1 3/4"  
Length: 5' 10 1/4"  
Area: 12.52 sq ft  
Perimeter: 15' 11 3/4"



THIS FLOORPLAN IS PROVIDED WITHOUT WARRANTY OF ANY KIND. NAZCA PROPERTIES  
DISCLAIMS ANY WARRANTY INCLUDING, WITHOUT LIMITATION, SATISFACTORY QUALITY OR  
ACCURACY OF DIMENSIONS.

# Kitchen

Width: 13' 1/2"  
 Length: 15' 1/4"  
 Area: 195.62 sq ft  
 Perimeter: 56' 1"  
 Ceiling Height: 9' 4 1/4"



5



Partition Wall

- Height: 3' 5 1/4"

6



Fixed Window

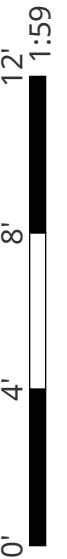
- Height: 5' 11 3/4"

7



Hung Window

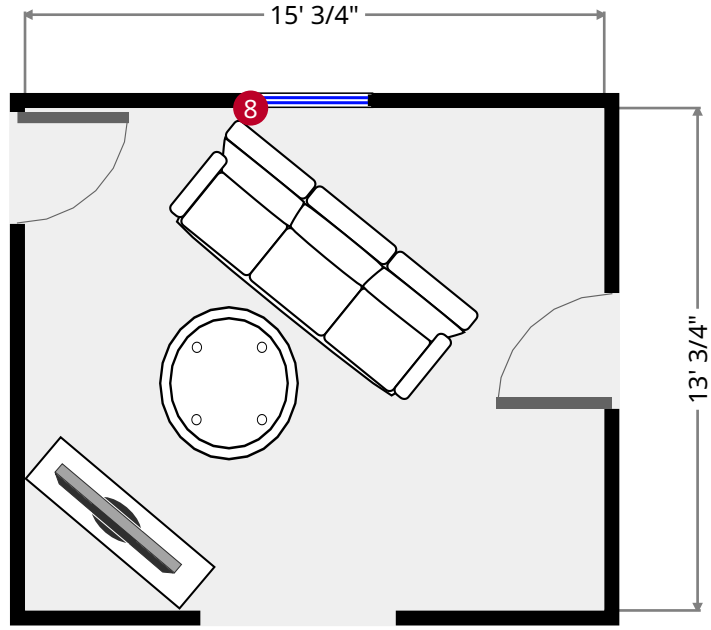
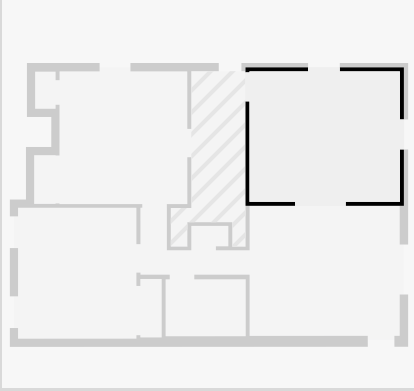
- Height: 4' 3"



THIS FLOORPLAN IS PROVIDED WITHOUT WARRANTY OF ANY KIND. NAZCA PROPERTIES  
 DISCLAIMS ANY WARRANTY INCLUDING, WITHOUT LIMITATION, SATISFACTORY QUALITY OR  
 ACCURACY OF DIMENSIONS.

# Living Room

Width: 13' 3/4"  
Length: 15' 3/4"  
Area: 196.76 sq ft  
Perimeter: 56' 3"  
Ceiling Height: 9' 8 3/4"



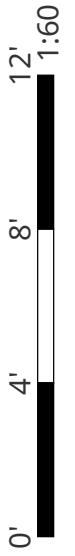
8



Hung Window

- Height: 5' 11 1/4"

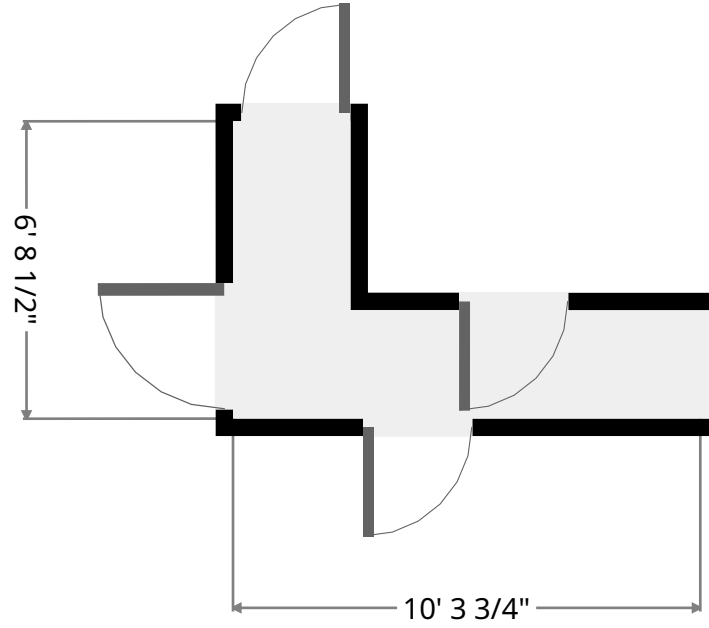
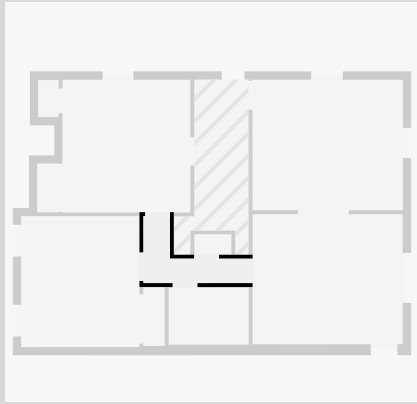
THIS FLOORPLAN IS PROVIDED WITHOUT WARRANTY OF ANY KIND. NAZCA PROPERTIES  
DISCLAIMS ANY WARRANTY INCLUDING, WITHOUT LIMITATION, SATISFACTORY QUALITY OR  
ACCURACY OF DIMENSIONS.





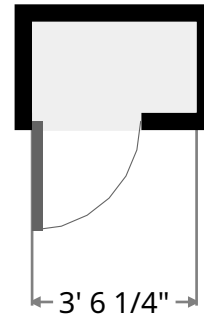
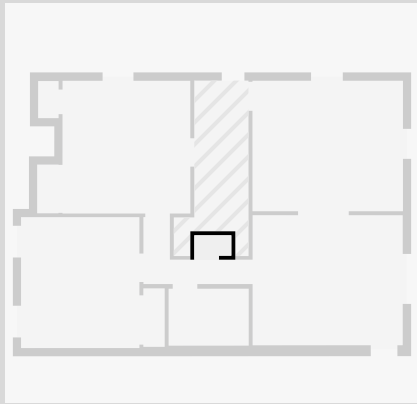
# Hall

Width: 6' 8 1/2"  
Length: 10' 6 1/2"  
Area: 37.01 sq ft  
Perimeter: 34' 5 1/2"



# Closet

Width: 2' 1/2"  
Length: 3' 8 1/2"  
Area: 7.59 sq ft  
Perimeter: 11' 6"



THIS FLOORPLAN IS PROVIDED WITHOUT WARRANTY OF ANY KIND. NAZCA PROPERTIES  
DISCLAIMS ANY WARRANTY INCLUDING, WITHOUT LIMITATION, SATISFACTORY QUALITY OR  
ACCURACY OF DIMENSIONS.

