

**502 Riddle Rd.  
Apt. 2**

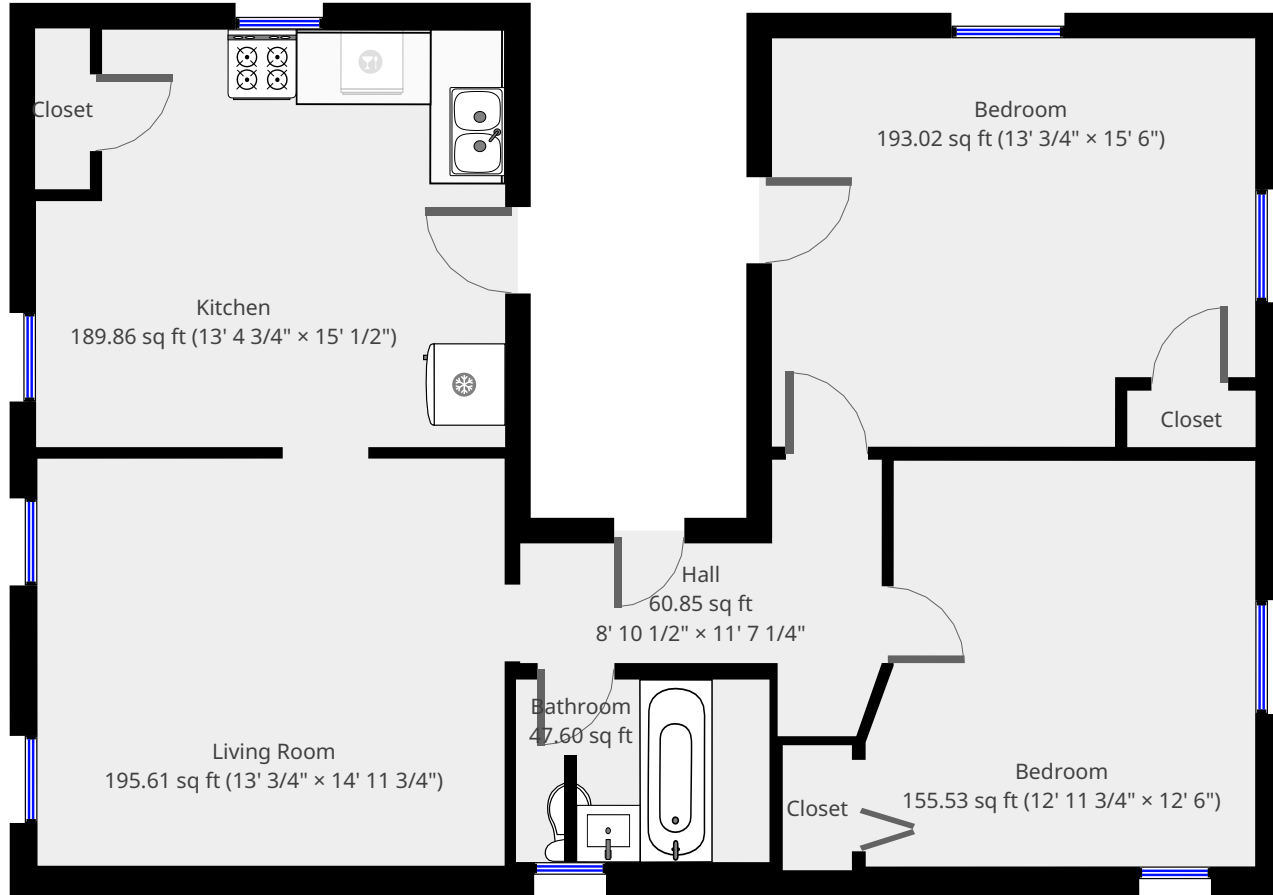
2nd Floor



**Nazca Properties**  
manager@nazcaproperties.com  
513-535-2154

**Statistics**

Area: 868 sq ft  
1 Floor  
2 Bedrooms  
1 Bathroom

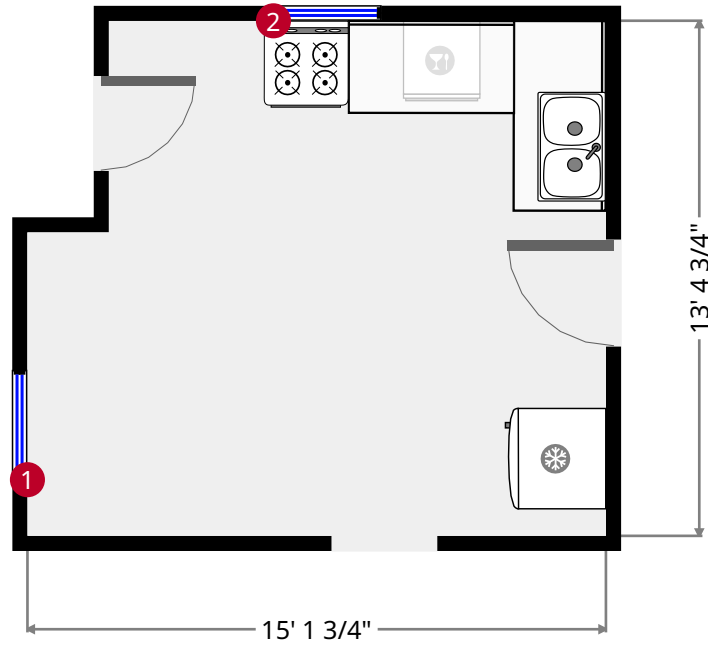
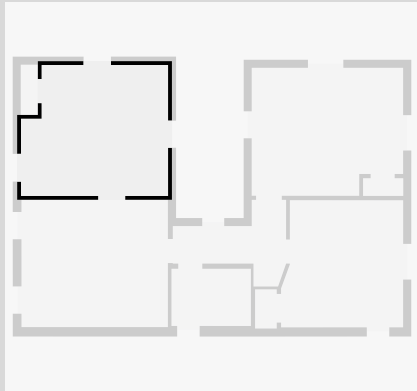


THIS FLOORPLAN IS PROVIDED WITHOUT WARRANTY OF ANY KIND. NAZCA PROPERTIES  
DISCLAIMS ANY WARRANTY INCLUDING, WITHOUT LIMITATION, SATISFACTORY QUALITY OR  
ACCURACY OF DIMENSIONS.



# Kitchen

Width: 13' 4 3/4"  
 Length: 15' 1/2"  
 Area: 189.86 sq ft  
 Perimeter: 56' 10 1/2"  
 Ceiling Height: 8' 11 3/4"



1



Hung Window

- Height: 5' 3 1/4"

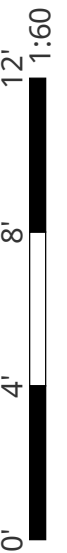
2



Hung Window

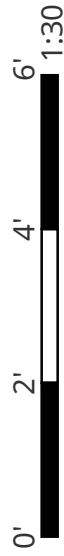
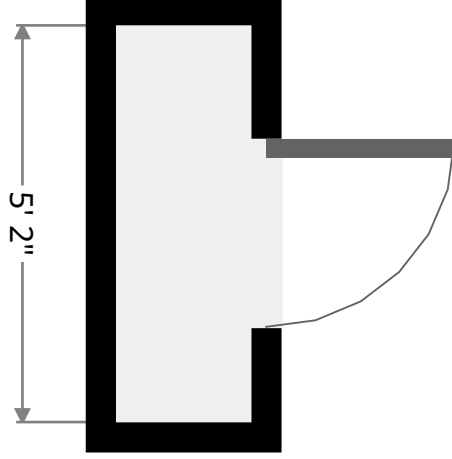
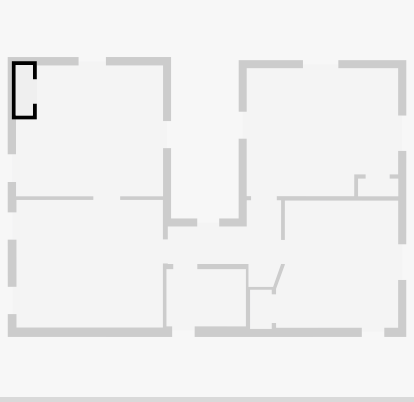
- Height: 3' 11"

THIS FLOORPLAN IS PROVIDED WITHOUT WARRANTY OF ANY KIND. NAZCA PROPERTIES  
 DISCLAIMS ANY WARRANTY INCLUDING, WITHOUT LIMITATION, SATISFACTORY QUALITY OR  
 ACCURACY OF DIMENSIONS.



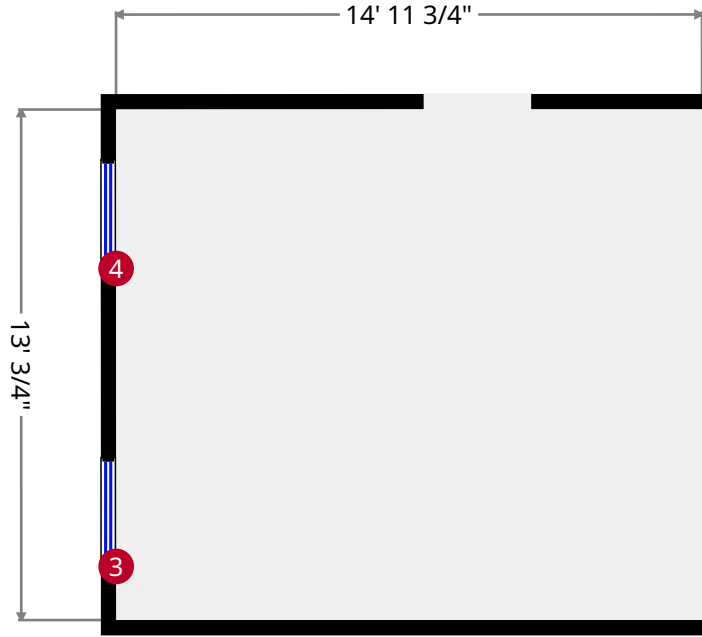
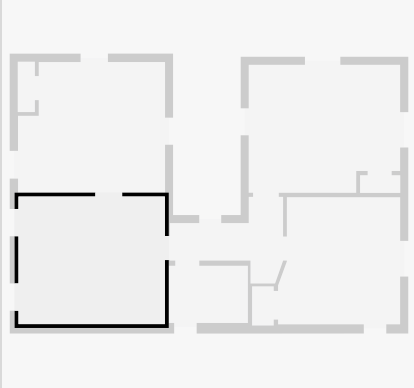
# Closet

Width: 1' 9 1/4"  
Length: 5' 2"  
Area: 9.07 sq ft  
Perimeter: 13' 10"



# Living Room

Width: 13' 3/4"  
 Length: 14' 11 3/4"  
 Area: 195.61 sq ft  
 Perimeter: 56' 1"  
 Ceiling Height: 8' 11 1/2"



3



Hung Window

- Height: 5' 4 1/2"

4



Hung Window

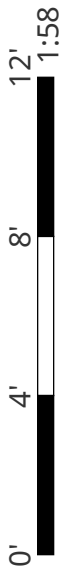
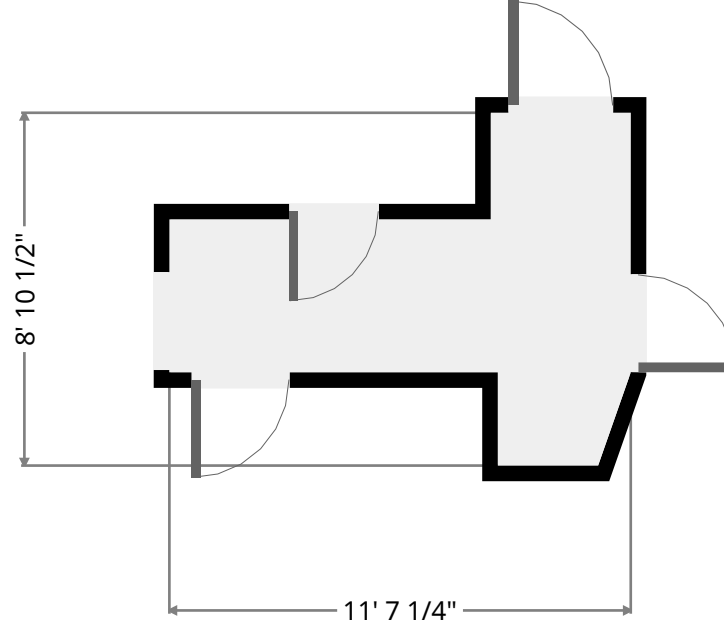
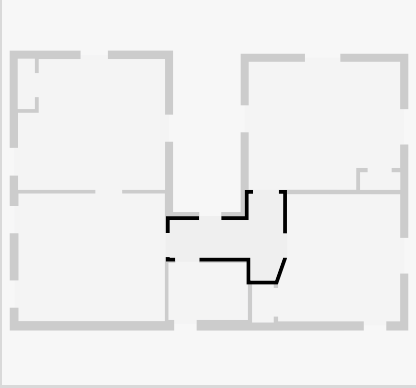
- Height: 5' 4 1/2"

THIS FLOORPLAN IS PROVIDED WITHOUT WARRANTY OF ANY KIND. MAZCA PROPERTIES  
 DISCLAIMS ANY WARRANTY INCLUDING, WITHOUT LIMITATION, SATISFACTORY QUALITY OR  
 ACCURACY OF DIMENSIONS.



# Hall

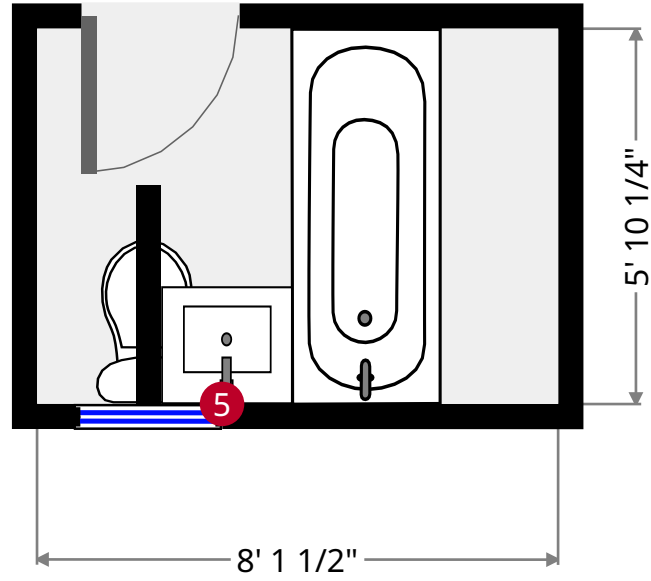
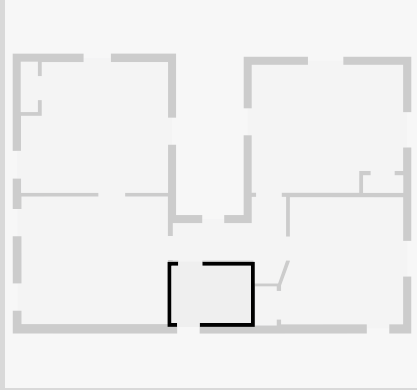
Width: 8' 10 1/2"  
Length: 11' 7 1/4"  
Area: 60.85 sq ft  
Perimeter: 40' 3"  
Ceiling Height: 9' 1/4"



THIS FLOORPLAN IS PROVIDED WITHOUT WARRANTY OF ANY KIND. NAZCA PROPERTIES  
DISCLAIMS ANY WARRANTY INCLUDING, WITHOUT LIMITATION, SATISFACTORY QUALITY OR  
ACCURACY OF DIMENSIONS.

# Bathroom

Width: 5' 10 1/4"  
Length: 8' 1 1/2"  
Area: 47.60 sq ft  
Perimeter: 27' 11 3/4"  
Ceiling Height: 9' 1/4"



5



Hung Window

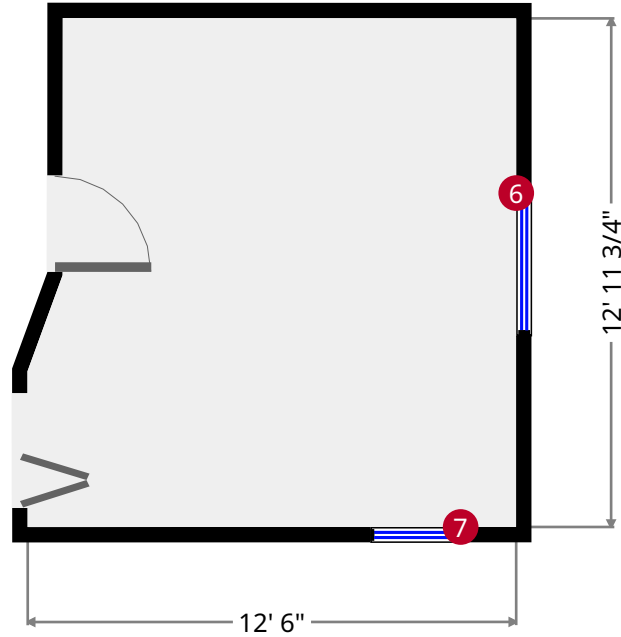
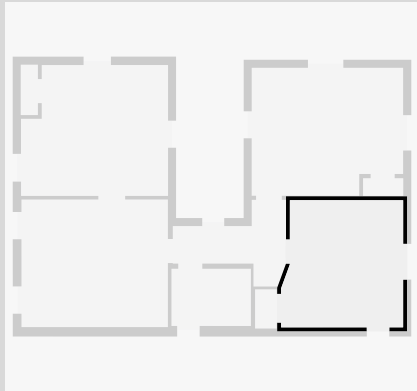
- Height: 4' 1/2"

THIS FLOORPLAN IS PROVIDED WITHOUT WARRANTY OF ANY KIND. NAZCA PROPERTIES  
DISCLAIMS ANY WARRANTY INCLUDING, WITHOUT LIMITATION, SATISFACTORY QUALITY OR  
ACCURACY OF DIMENSIONS.



# Bedroom

Width: 12' 6"  
Length: 12' 11 3/4"  
Area: 155.53 sq ft  
Perimeter: 50' 3 1/4"  
Ceiling Height: 9' 1 1/4"



6



Hung Window

- Height: 5' 3 1/2"

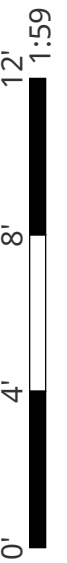
7



Hung Window

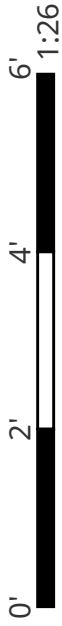
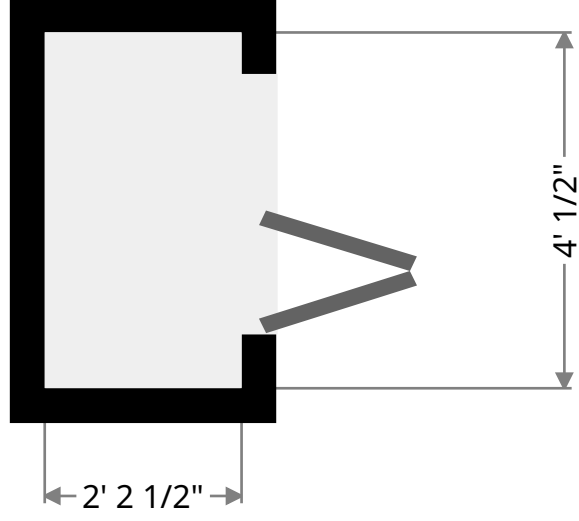
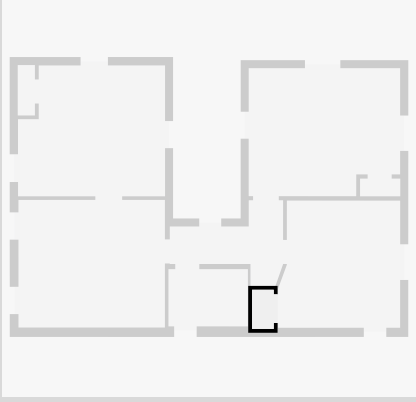
- Height: 4' 3 1/4"

THIS FLOORPLAN IS PROVIDED WITHOUT WARRANTY OF ANY KIND. NAZCA PROPERTIES  
DISCLAIMS ANY WARRANTY INCLUDING, WITHOUT LIMITATION, SATISFACTORY QUALITY OR  
ACCURACY OF DIMENSIONS.



# Closet

Width: 2' 2 1/2"  
Length: 4' 1/2"  
Area: 8.89 sq ft  
Perimeter: 12' 5 1/2"

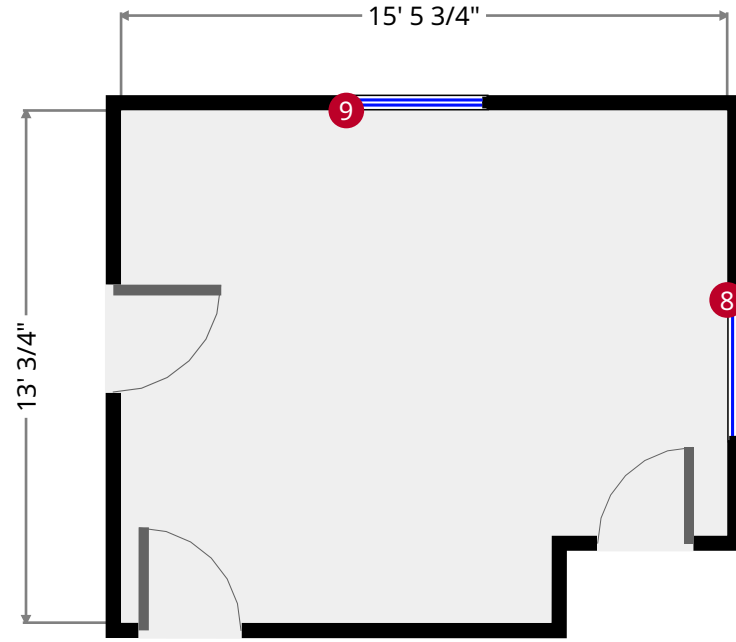
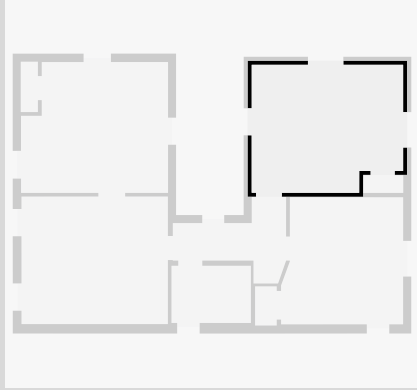


THIS FLOORPLAN IS PROVIDED WITHOUT WARRANTY OF ANY KIND. NAZCA PROPERTIES  
DISCLAIMS ANY WARRANTY INCLUDING, WITHOUT LIMITATION, SATISFACTORY QUALITY OR  
ACCURACY OF DIMENSIONS.



# Bedroom

Width: 13' 3/4"  
Length: 15' 6"  
Area: 193.02 sq ft  
Perimeter: 57' 2 1/2"  
Ceiling Height: 9' 3/4"



8



Hung Window

- Height: 5' 3 1/2"

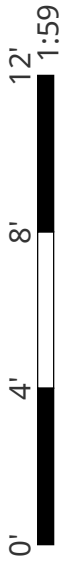
9



Hung Window

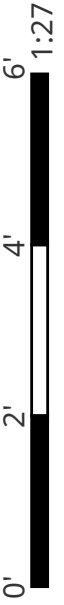
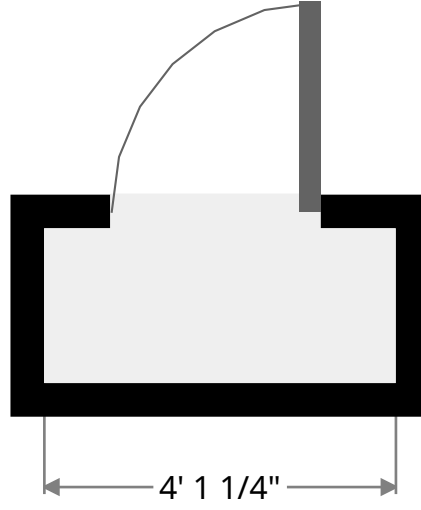
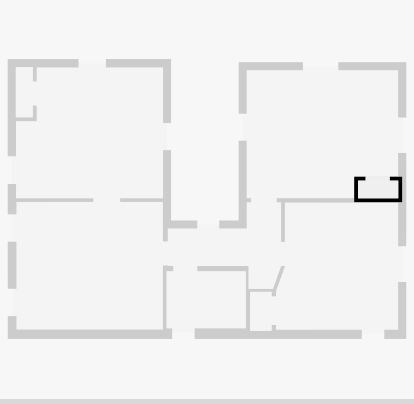
- Height: 5' 3 1/2"

THIS FLOORPLAN IS PROVIDED WITHOUT WARRANTY OF ANY KIND. NAZCA PROPERTIES  
DISCLAIMS ANY WARRANTY INCLUDING, WITHOUT LIMITATION, SATISFACTORY QUALITY OR  
ACCURACY OF DIMENSIONS.



# Closet

Width: 1' 9 3/4"  
Length: 4' 1 1/4"  
Area: 7.45 sq ft  
Perimeter: 11' 10 1/4"



THIS FLOORPLAN IS PROVIDED WITHOUT WARRANTY OF ANY KIND. NAZCA PROPERTIES  
DISCLAIMS ANY WARRANTY INCLUDING, WITHOUT LIMITATION, SATISFACTORY QUALITY OR  
ACCURACY OF DIMENSIONS.