

**502 Riddle Rd.
Apt. 3**

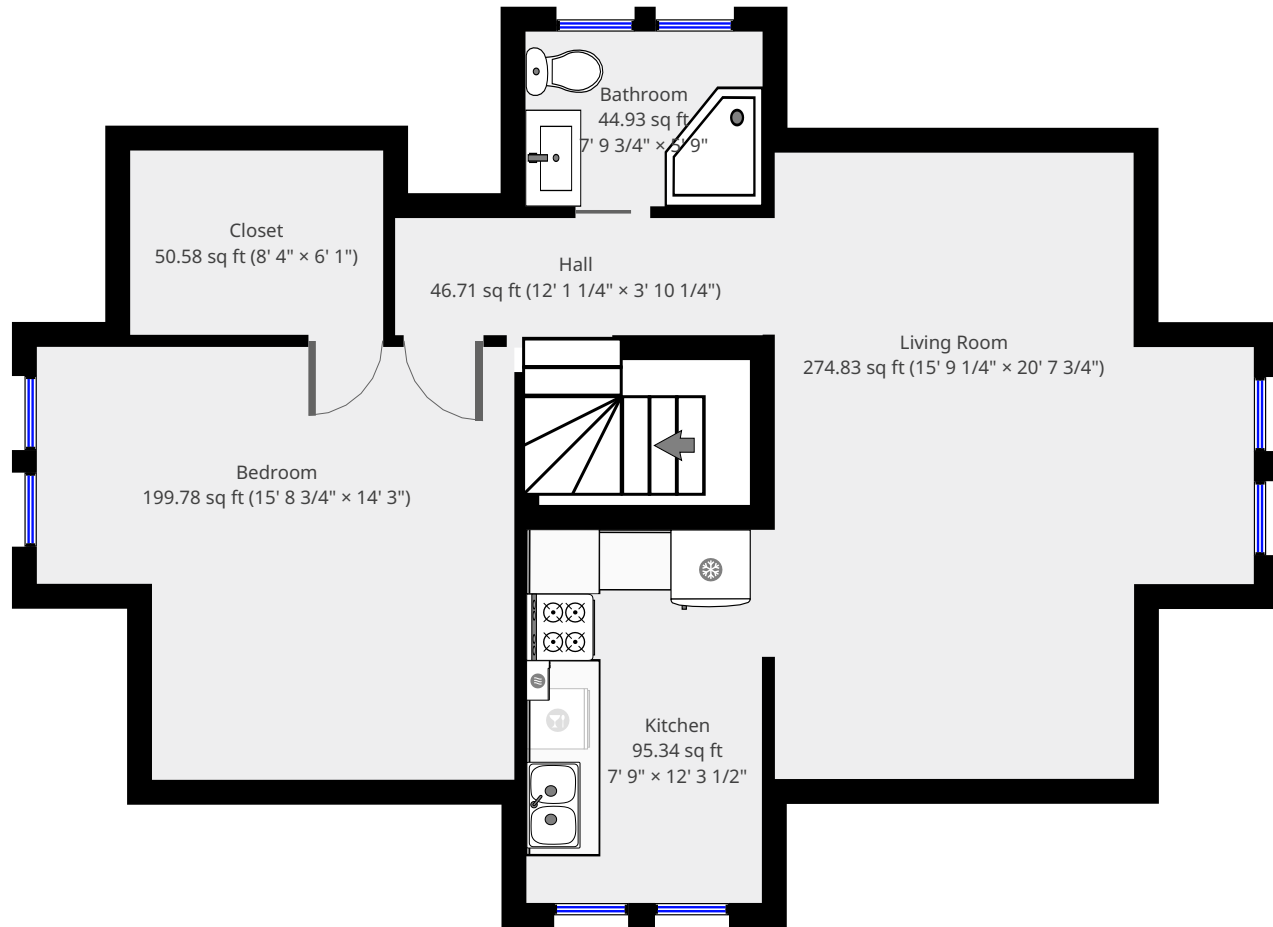
3rd Floor



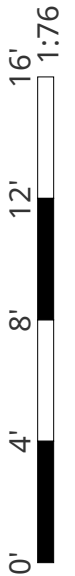
Nazca Properties
manager@nazcaproperties.com
513-535-2154

Statistics

Area: 712 sq ft
1 Floor
1 Bedroom
1 Bathroom

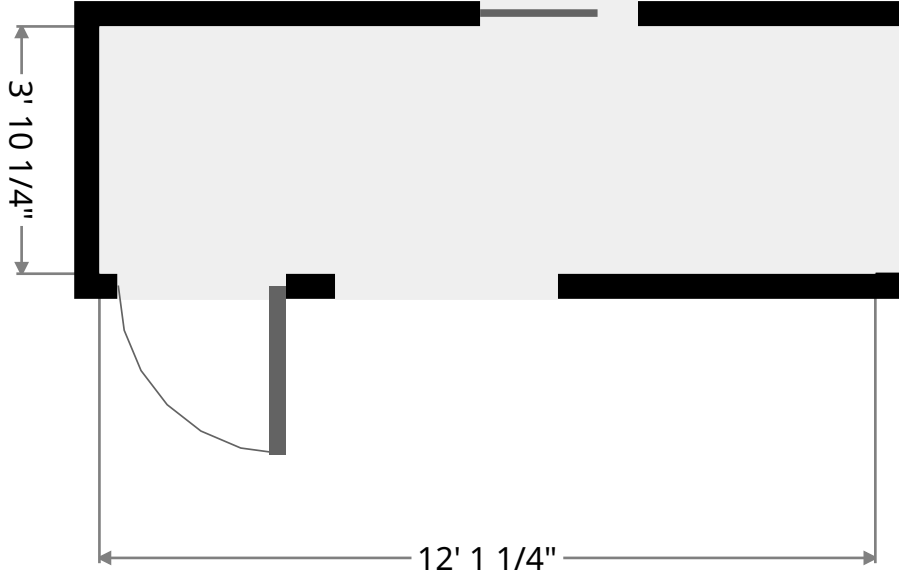
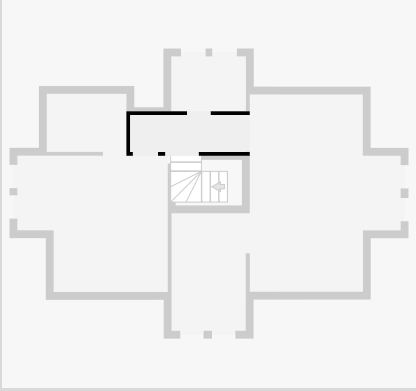


THIS FLOORPLAN IS PROVIDED WITHOUT WARRANTY OF ANY KIND. NAZCA PROPERTIES
DISCLAIMS ANY WARRANTY INCLUDING, WITHOUT LIMITATION, SATISFACTORY QUALITY OR
ACCURACY OF DIMENSIONS.



Hall

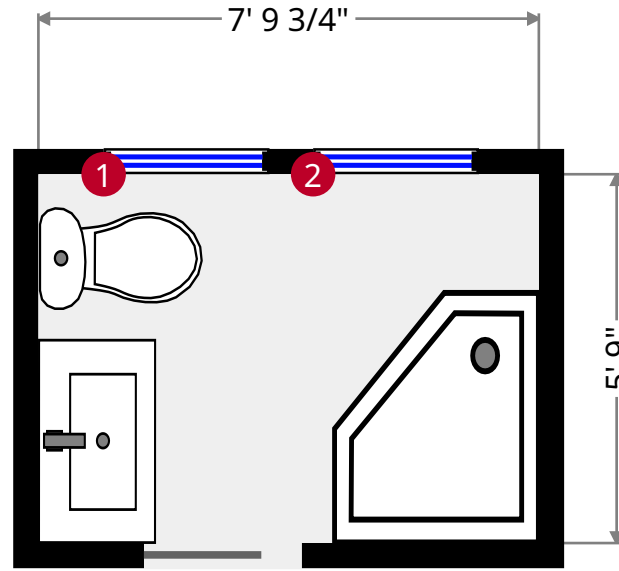
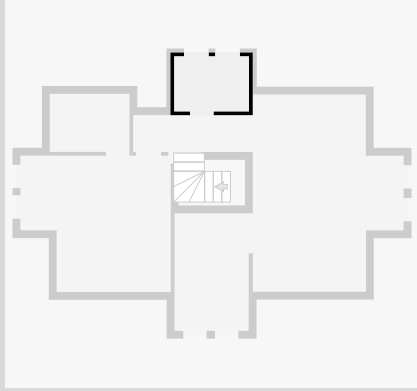
Width: 3' 10 1/4"
Length: 12' 1 1/4"
Area: 46.71 sq ft
Perimeter: 31' 11 1/4"
Ceiling Height: 8' 5 1/4"



THIS FLOORPLAN IS PROVIDED WITHOUT WARRANTY OF ANY KIND. NAZCA PROPERTIES
DISCLAIMS ANY WARRANTY INCLUDING, WITHOUT LIMITATION, SATISFACTORY QUALITY OR
ACCURACY OF DIMENSIONS.

Bathroom

Width: 5' 9"
 Length: 7' 9 3/4"
 Area: 44.93 sq ft
 Perimeter: 27' 1 1/2"
 Ceiling Height: 8' 3"



1



Hung Window

- Height: 4' 8 3/4"

2



Hung Window

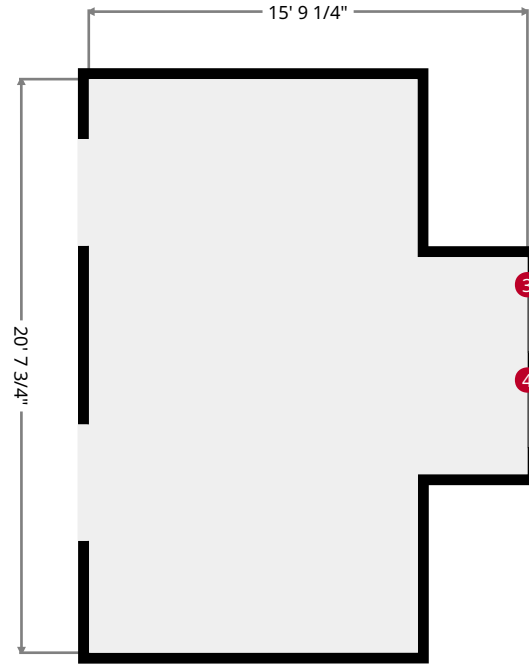
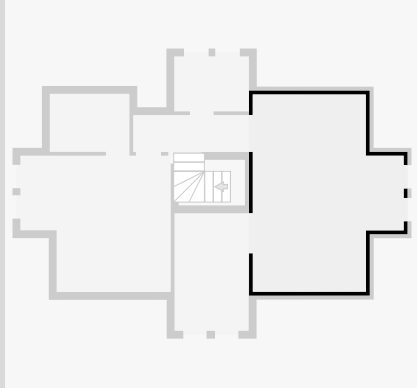
- Height: 4' 8 3/4"

THIS FLOORPLAN IS PROVIDED WITHOUT WARRANTY OF ANY KIND. NAZCA PROPERTIES
 DISCLAIMS ANY WARRANTY INCLUDING, WITHOUT LIMITATION, SATISFACTORY QUALITY OR
 ACCURACY OF DIMENSIONS.



Living Room

Width: 15' 9 1/4"
Length: 20' 7 3/4"
Area: 274.83 sq ft
Perimeter: 72' 9 3/4"
Ceiling Height: 8' 4 1/2"



3



Hung Window

- Height: 4' 7 3/4"

4



Hung Window

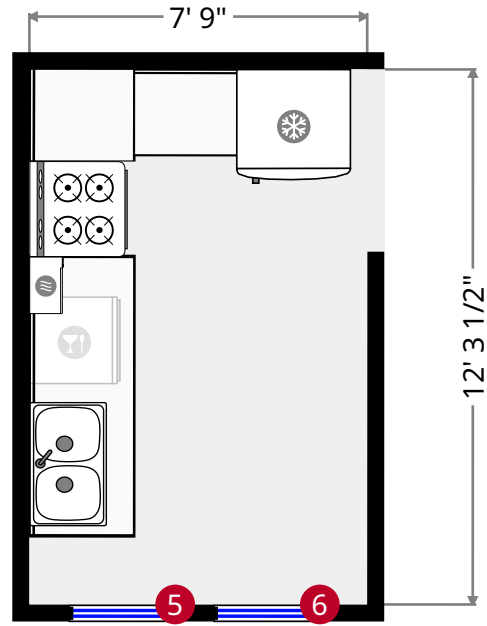
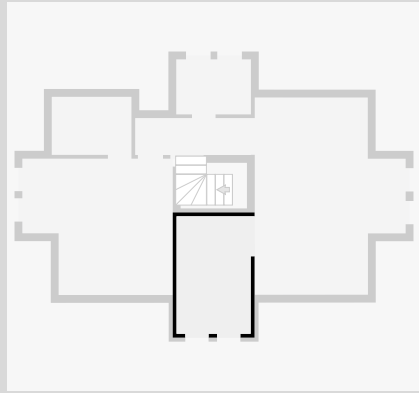
- Height: 4' 7 3/4"

THIS FLOORPLAN IS PROVIDED WITHOUT WARRANTY OF ANY KIND. NAZCA PROPERTIES
DISCLAIMS ANY WARRANTY INCLUDING, WITHOUT LIMITATION, SATISFACTORY QUALITY OR
ACCURACY OF DIMENSIONS.



Kitchen

Width: 7' 9"
Length: 12' 3 1/2"
Area: 95.34 sq ft
Perimeter: 40' 1 1/4"
Ceiling Height: 8' 5 1/2"



5



Hung Window

- Height: 4' 7 1/2"

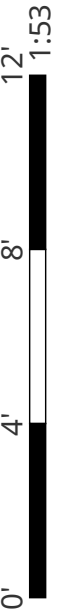
6



Hung Window

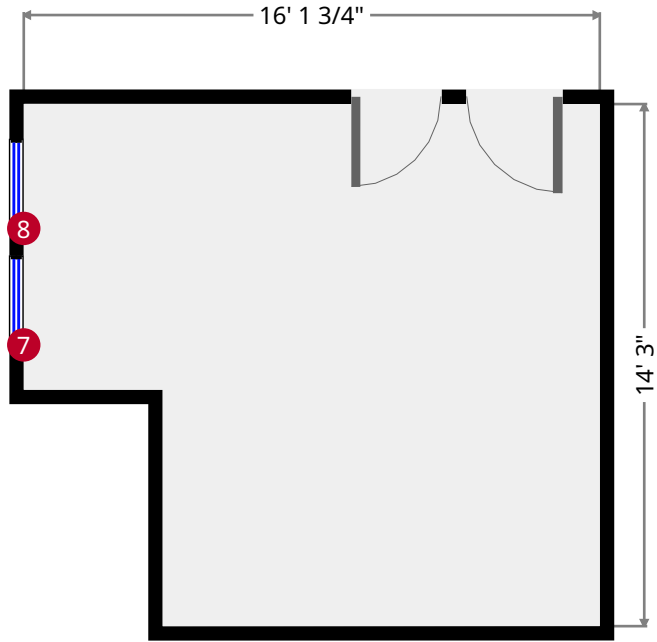
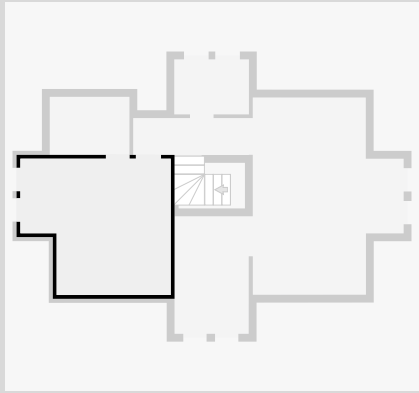
- Height: 4' 7 1/2"

THIS FLOORPLAN IS PROVIDED WITHOUT WARRANTY OF ANY KIND. NAZCA PROPERTIES
DISCLAIMS ANY WARRANTY INCLUDING, WITHOUT LIMITATION, SATISFACTORY QUALITY OR
ACCURACY OF DIMENSIONS.



Bedroom

Width: 14' 3"
 Length: 15' 8 3/4"
 Area: 199.78 sq ft
 Perimeter: 59' 11 3/4"
 Ceiling Height: 8' 6 1/2"



7



Hung Window

- Height: 4' 7 3/4"

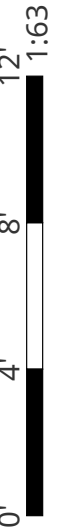
8



Hung Window

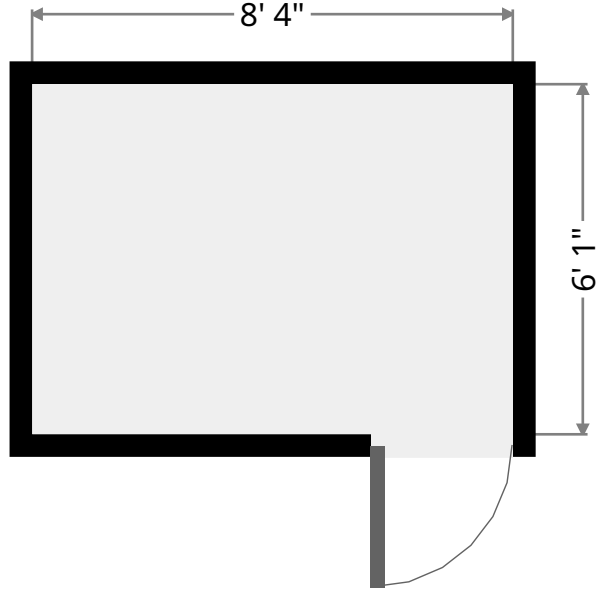
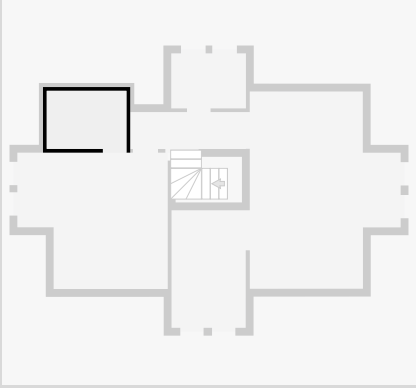
- Height: 4' 7 3/4"

THIS FLOORPLAN IS PROVIDED WITHOUT WARRANTY OF ANY KIND. NAZCA PROPERTIES
 DISCLAIMS ANY WARRANTY INCLUDING, WITHOUT LIMITATION, SATISFACTORY QUALITY OR
 ACCURACY OF DIMENSIONS.



Closet

Width: 6' 1"
Length: 8' 4"
Area: 50.58 sq ft
Perimeter: 28' 9 3/4"
Ceiling Height: 7' 2"



THIS FLOORPLAN IS PROVIDED WITHOUT WARRANTY OF ANY KIND. NAZCA PROPERTIES
DISCLAIMS ANY WARRANTY INCLUDING, WITHOUT LIMITATION, SATISFACTORY QUALITY OR
ACCURACY OF DIMENSIONS.