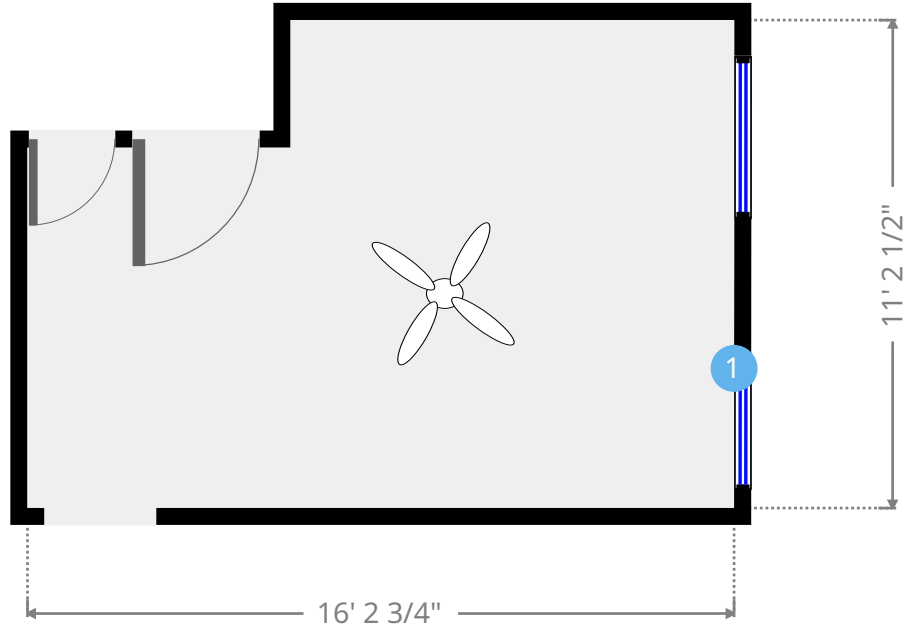
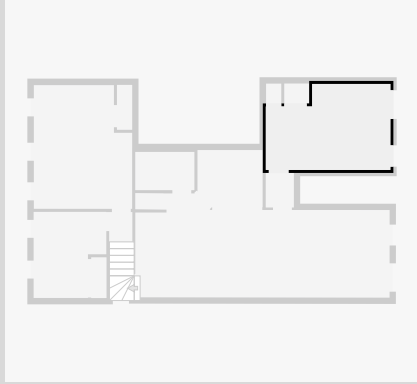


Bedroom

Width: 11' 2 1/2"
Length: 16' 2 3/4"
Area: 164.14 sq ft
Perimeter: 54' 10 1/2"
Ceiling Height: 11' 9 1/2"



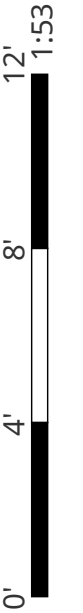
1



Hung Window

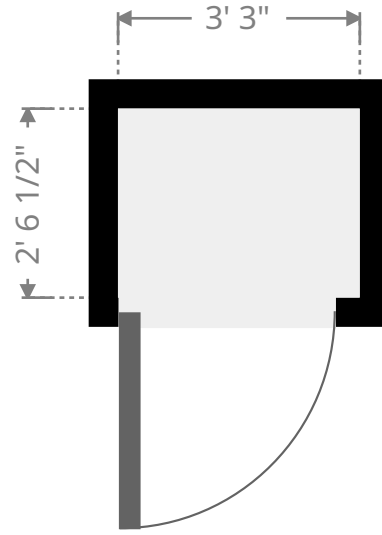
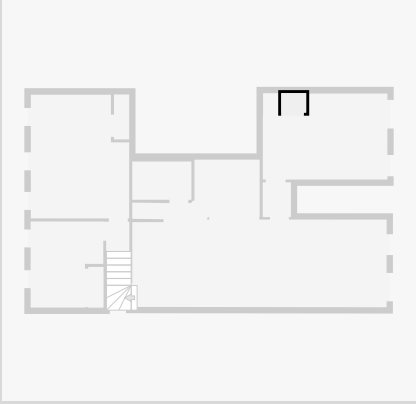
- Height: 5' 7"

THIS FLOORPLAN IS PROVIDED WITHOUT WARRANTY OF ANY KIND. NAZCA PROPERTIES
DISCLAIMS ANY WARRANTY INCLUDING, WITHOUT LIMITATION, SATISFACTORY QUALITY OR
ACCURACY OF DIMENSIONS.



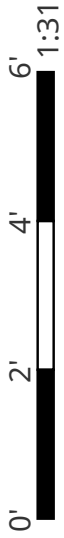
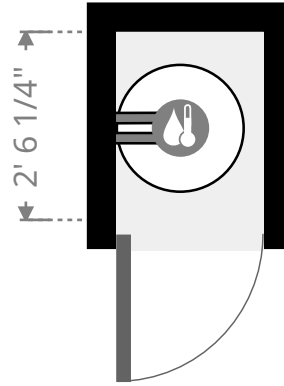
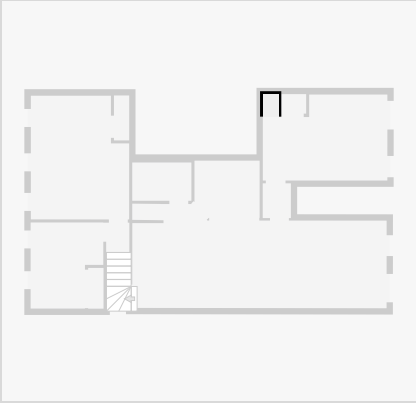
Closet

Width: 2' 6 1/2"
Length: 3' 3"
Area: 8.25 sq ft
Perimeter: 11' 7"



Utility

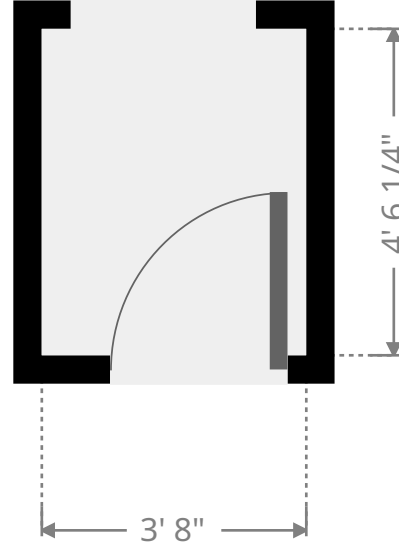
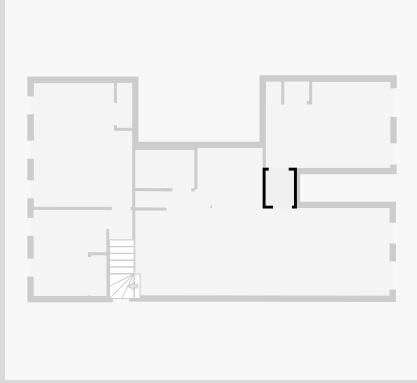
Width: 1' 11 3/4"
Length: 2' 6 1/4"
Area: 5.01 sq ft
Perimeter: 9' 1/4"



THIS FLOORPLAN IS PROVIDED WITHOUT WARRANTY OF ANY KIND. NAZCA PROPERTIES
DISCLAIMS ANY WARRANTY INCLUDING, WITHOUT LIMITATION, SATISFACTORY QUALITY OR
ACCURACY OF DIMENSIONS.

Hall

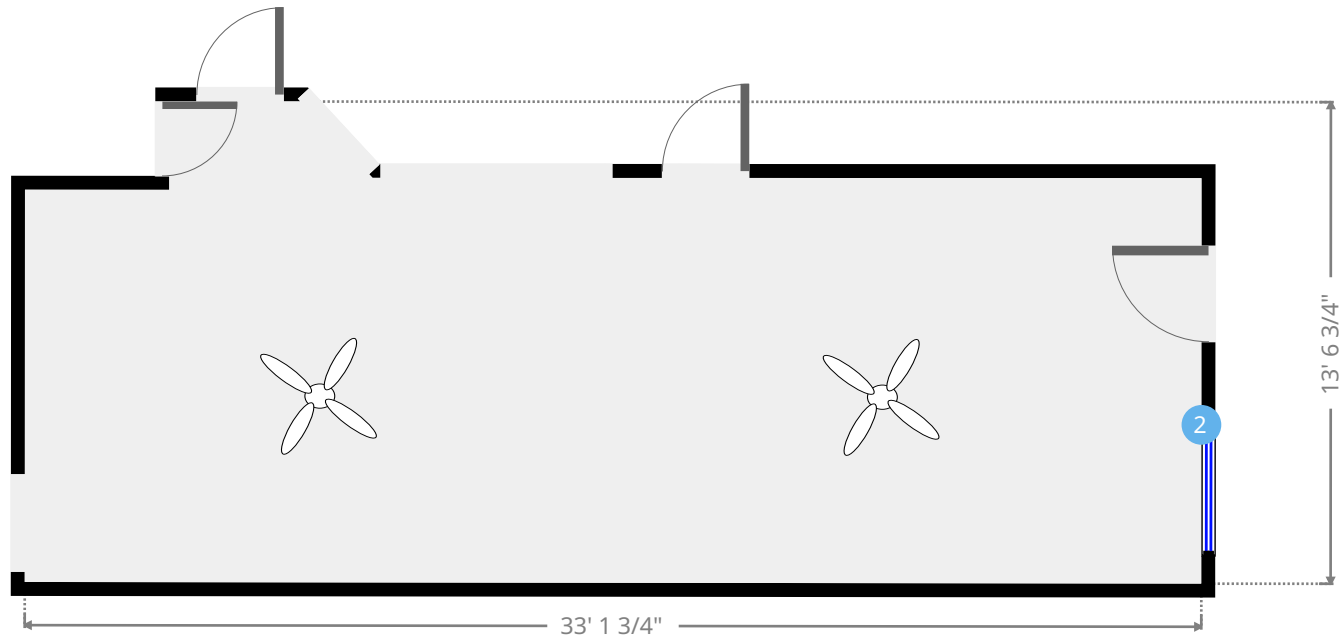
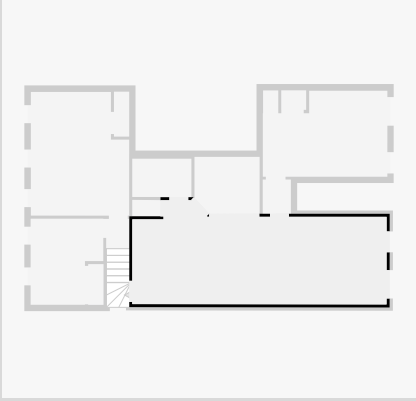
Width: 3' 8"
Length: 4' 6 1/4"
Area: 16.61 sq ft
Perimeter: 16' 4 3/4"
Ceiling Height: 7' 1 3/4"



THIS FLOORPLAN IS PROVIDED WITHOUT WARRANTY OF ANY KIND. NAZCA PROPERTIES
DISCLAIMS ANY WARRANTY INCLUDING, WITHOUT LIMITATION, SATISFACTORY QUALITY OR
ACCURACY OF DIMENSIONS.

Living Room

Width: 13' 6 3/4"
Length: 33' 1 3/4"
Area: 386.81 sq ft
Perimeter: 92' 2 1/4"
Ceiling Height: 11' 6 1/4"



THIS FLOORPLAN IS PROVIDED WITHOUT WARRANTY OF ANY KIND. NAZCA PROPERTIES
DISCLAIMS ANY WARRANTY INCLUDING, WITHOUT LIMITATION, SATISFACTORY QUALITY OR
ACCURACY OF DIMENSIONS.



2



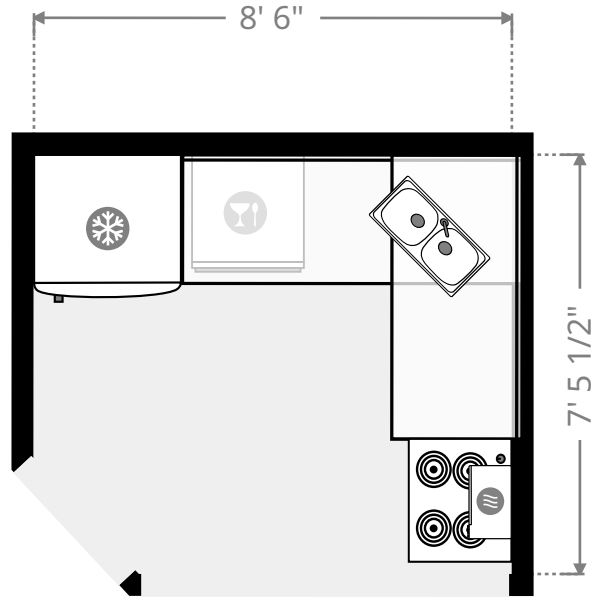
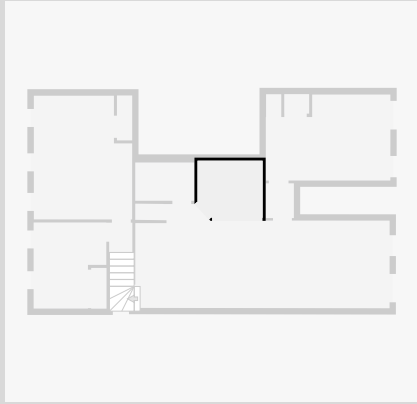
Hung Window

- Height: 5' 8 3/4"

THIS FLOORPLAN IS PROVIDED WITHOUT WARRANTY OF ANY KIND. NAZCA PROPERTIES
DISCLAIMS ANY WARRANTY INCLUDING, WITHOUT LIMITATION, SATISFACTORY QUALITY OR
ACCURACY OF DIMENSIONS.

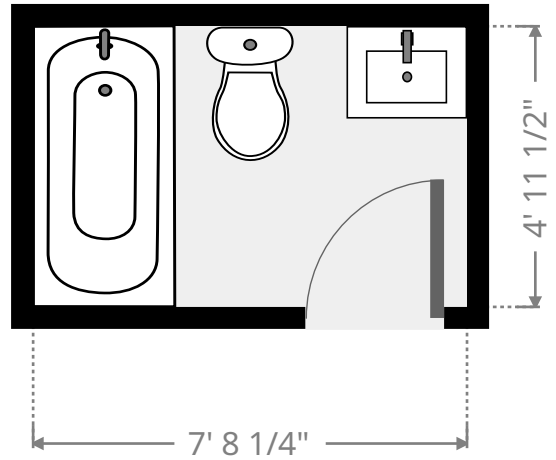
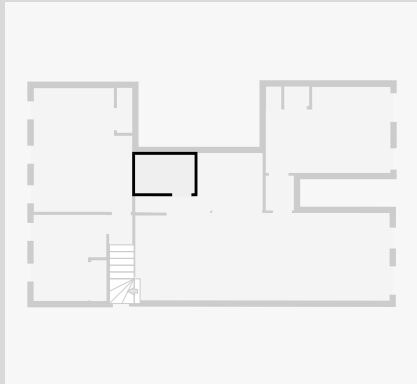
Kitchen

Width: 7' 5 1/2"
Length: 8' 6"
Area: 61.36 sq ft
Perimeter: 30' 9"

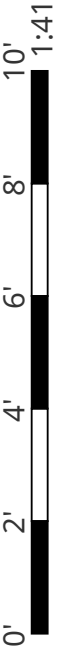


Bathroom

Width: 4' 11 3/4"
Length: 7' 8 1/2"
Area: 38.45 sq ft
Perimeter: 25' 4 3/4"
Ceiling Height: 7' 11 1/4"

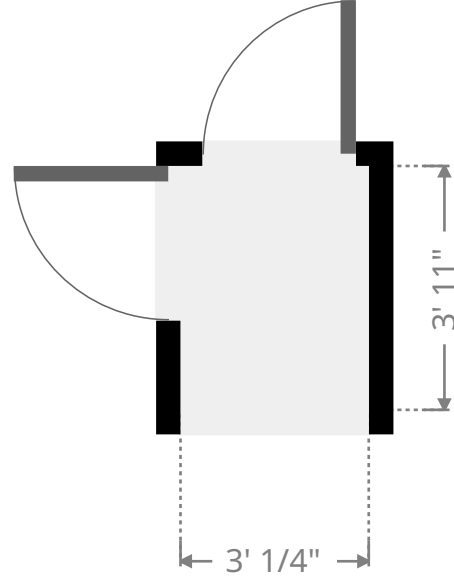
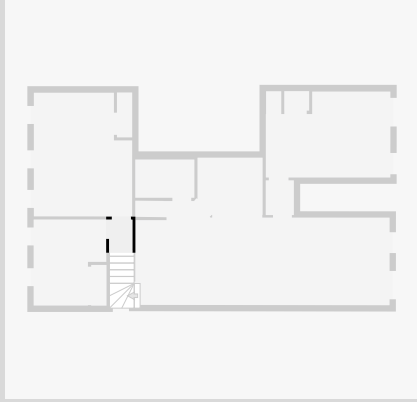


THIS FLOORPLAN IS PROVIDED WITHOUT WARRANTY OF ANY KIND. NAZCA PROPERTIES
DISCLAIMS ANY WARRANTY INCLUDING, WITHOUT LIMITATION, SATISFACTORY QUALITY OR
ACCURACY OF DIMENSIONS.



Hall

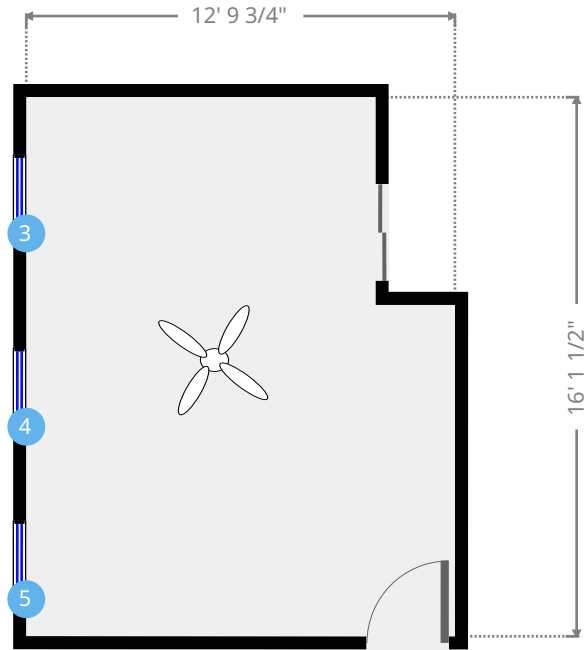
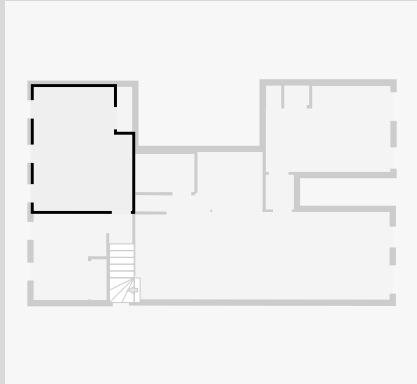
Width: 3' 1/4"
Length: 3' 11"
Area: 11.80 sq ft
Perimeter: 13' 10 1/4"



THIS FLOORPLAN IS PROVIDED WITHOUT WARRANTY OF ANY KIND. NAZCA PROPERTIES
DISCLAIMS ANY WARRANTY INCLUDING, WITHOUT LIMITATION, SATISFACTORY QUALITY OR
ACCURACY OF DIMENSIONS.

Master Bedroom

Width: 12' 9 3/4"
 Length: 16' 1 1/2"
 Area: 191.79 sq ft
 Perimeter: 57' 10 1/2"
 Ceiling Height: 8' 1/2"



3



Hung Window

- Height: 4' 10"

4



Hung Window

- Height: 4' 10"

5



Hung Window

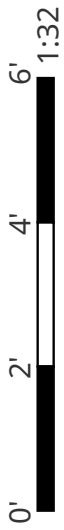
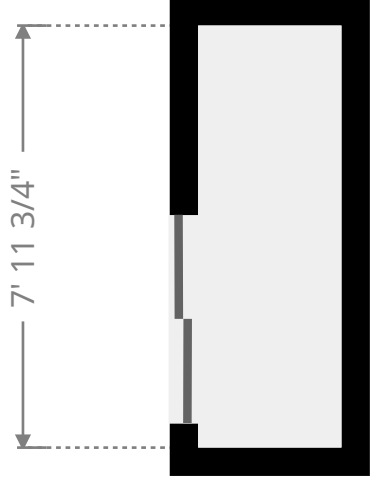
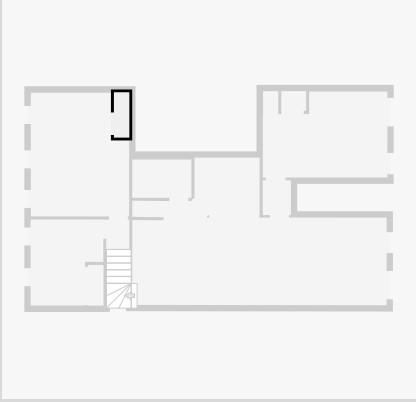
- Height: 4' 10"

THIS FLOORPLAN IS PROVIDED WITHOUT WARRANTY OF ANY KIND. NAZCA PROPERTIES
 DISCLAIMS ANY WARRANTY INCLUDING, WITHOUT LIMITATION, SATISFACTORY QUALITY OR
 ACCURACY OF DIMENSIONS.



Closet

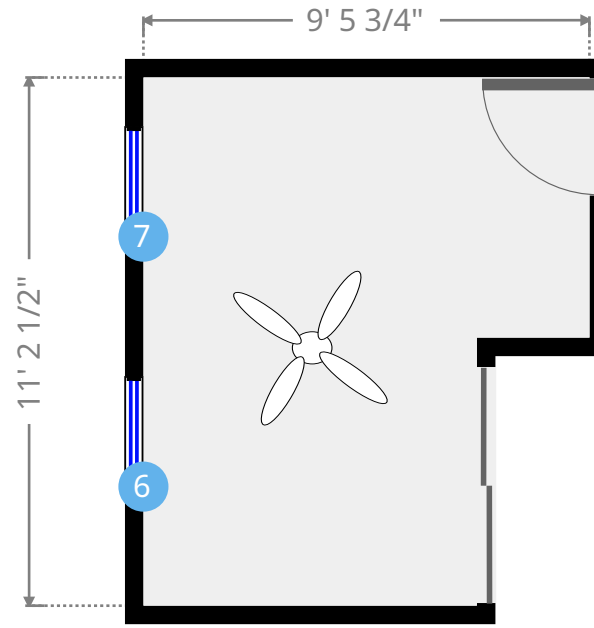
Width: 1' 11 3/4"
Length: 5' 10 1/4"
Area: 11.64 sq ft
Perimeter: 15' 8 1/4"



THIS FLOORPLAN IS PROVIDED WITHOUT WARRANTY OF ANY KIND. NAZCA PROPERTIES
DISCLAIMS ANY WARRANTY INCLUDING, WITHOUT LIMITATION, SATISFACTORY QUALITY OR
ACCURACY OF DIMENSIONS.

Bedroom

Width: 9' 5 3/4"
 Length: 11' 2 3/4"
 Area: 92.65 sq ft
 Perimeter: 41' 4 1/2"
 Ceiling Height: 7' 11 1/4"



6



Hung Window

- Height: 4' 10"

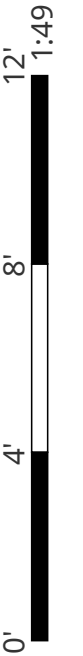
7



Hung Window

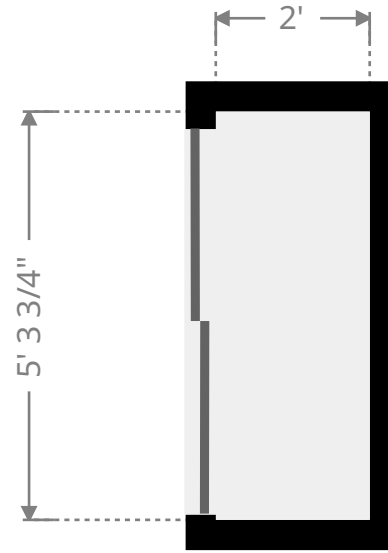
- Height: 4' 10"

THIS FLOORPLAN IS PROVIDED WITHOUT WARRANTY OF ANY KIND. NAZCA PROPERTIES
 DISCLAIMS ANY WARRANTY INCLUDING, WITHOUT LIMITATION, SATISFACTORY QUALITY OR
 ACCURACY OF DIMENSIONS.



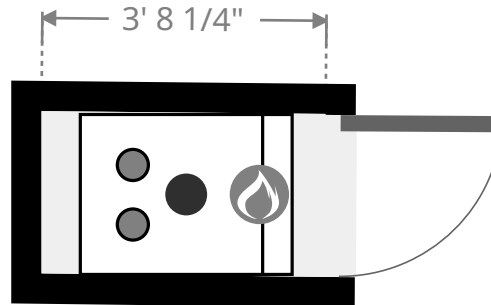
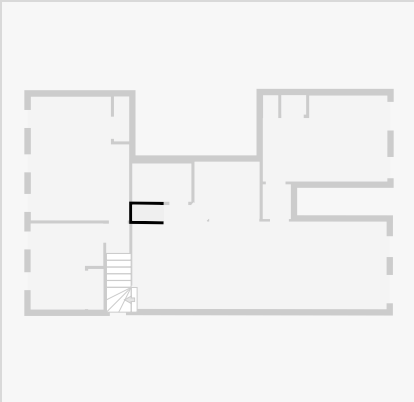
Closet

Width: 2'
Length: 5' 3 3/4"
Area: 10.62 sq ft
Perimeter: 14' 7 1/2"



Furnace Room

Width: 2' 1 3/4"
Length: 3' 8 1/4"
Area: 7.80 sq ft
Perimeter: 11' 7 1/4"



THIS FLOORPLAN IS PROVIDED WITHOUT WARRANTY OF ANY KIND. NAZCA PROPERTIES
DISCLAIMS ANY WARRANTY INCLUDING, WITHOUT LIMITATION, SATISFACTORY QUALITY OR
ACCURACY OF DIMENSIONS.