

445 W McMicken A...

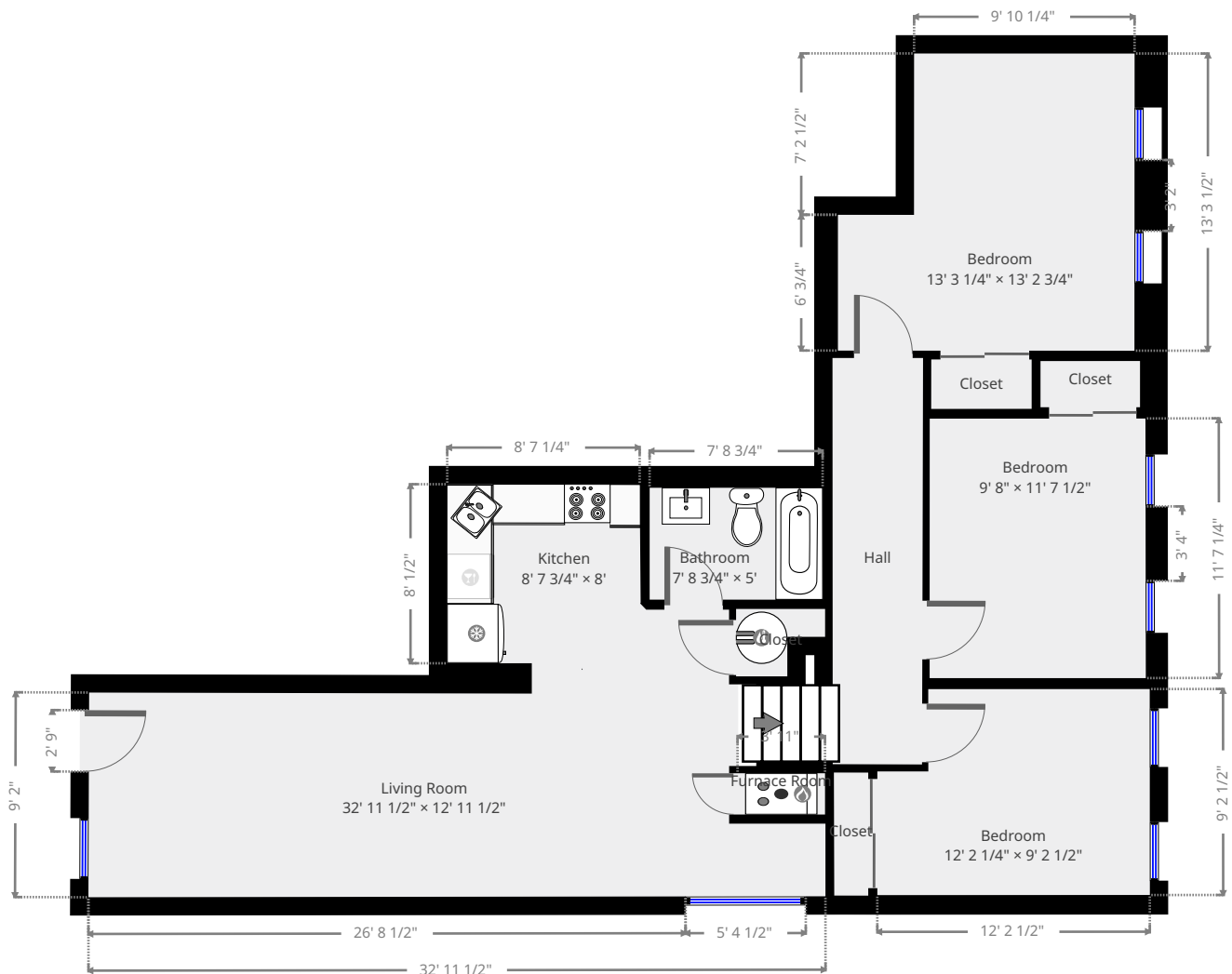
Ground Floor



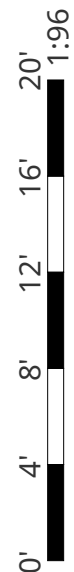
Nazca Properties
 manager@nazcaproperties.com
 513-535-2154

Statistics

Area: 1090 sq ft
 1 Floor
 3 Bedrooms
 1 Bathroom

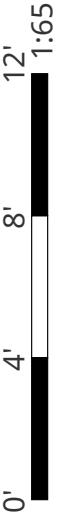
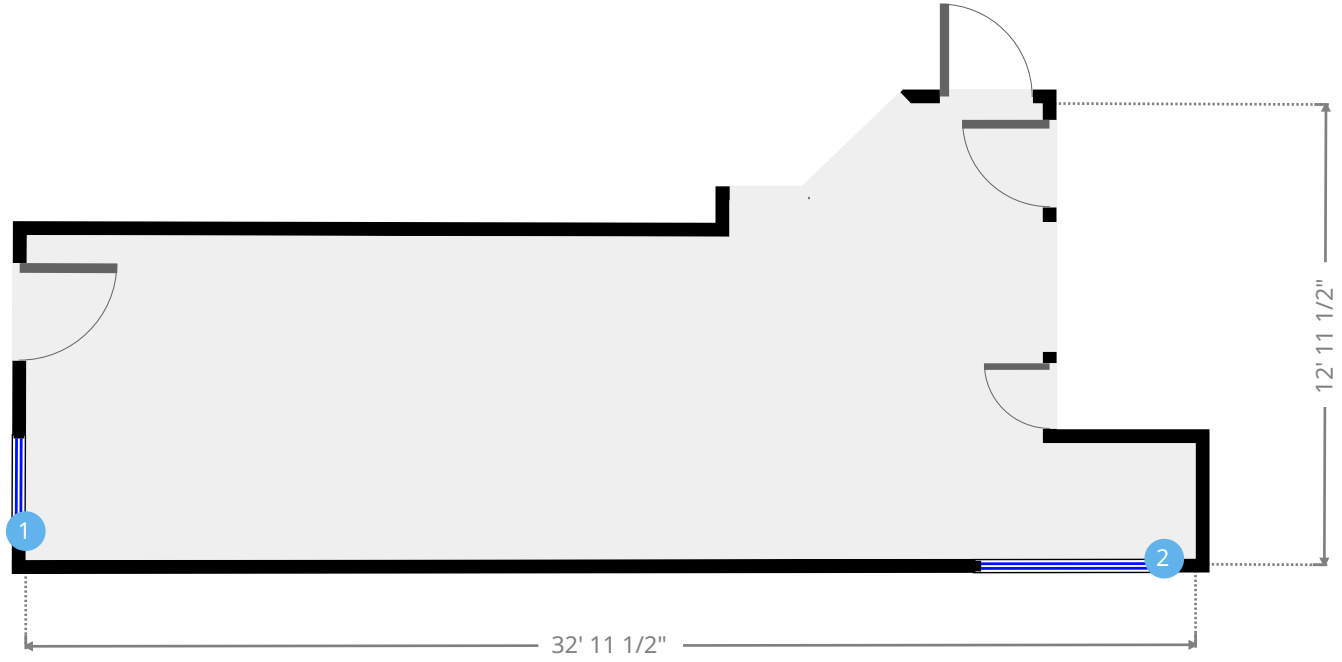
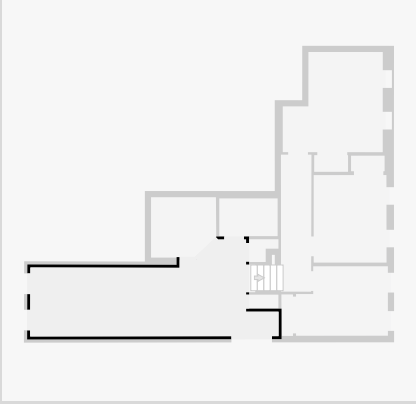


THIS FLOORPLAN IS PROVIDED WITHOUT WARRANTY OF ANY KIND. NAZCA PROPERTIES DISCLAIMS ANY WARRANTY INCLUDING, WITHOUT LIMITATION, SATISFACTORY QUALITY OR ACCURACY OF DIMENSIONS.



Living Room

Width: 12' 11 1/2"
Length: 32' 11 1/2"
Area: 297.99 sq ft
Perimeter: 89' 11 3/4"



THIS FLOORPLAN IS PROVIDED WITHOUT WARRANTY OF ANY KIND. NAZCA PROPERTIES
DISCLAIMS ANY WARRANTY INCLUDING, WITHOUT LIMITATION, SATISFACTORY QUALITY OR
ACCURACY OF DIMENSIONS.

1



Hung Window

- Height: 5' 7"

2



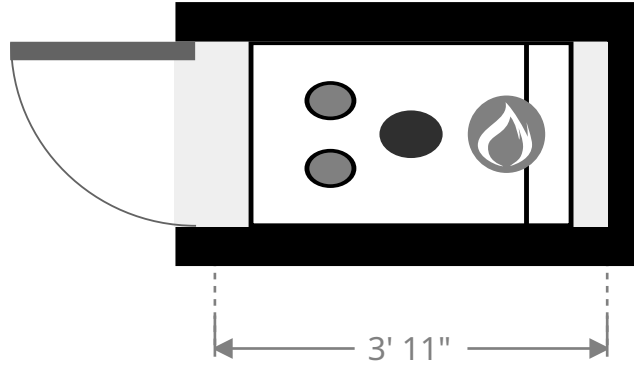
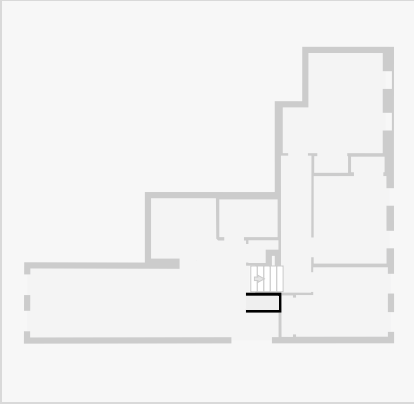
Hung Window

- Height: 2' 9 1/4"

THIS FLOORPLAN IS PROVIDED WITHOUT WARRANTY OF ANY KIND. NAZCA PROPERTIES
DISCLAIMS ANY WARRANTY INCLUDING, WITHOUT LIMITATION, SATISFACTORY QUALITY OR
ACCURACY OF DIMENSIONS.

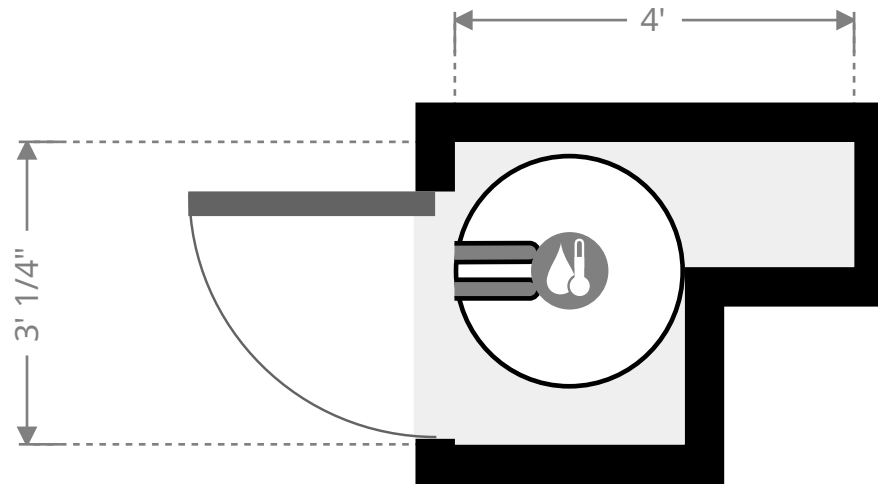
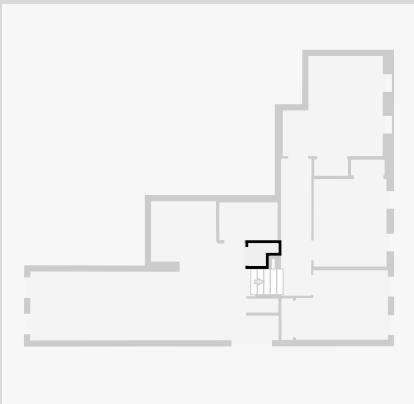
Furnace Room

Width: 1' 10 1/4"
Length: 3' 11"
Area: 7.21 sq ft
Perimeter: 11' 6"



Closet

Width: 3' 1/4"
Length: 3' 11 3/4"
Area: 9.01 sq ft
Perimeter: 13' 11 3/4"

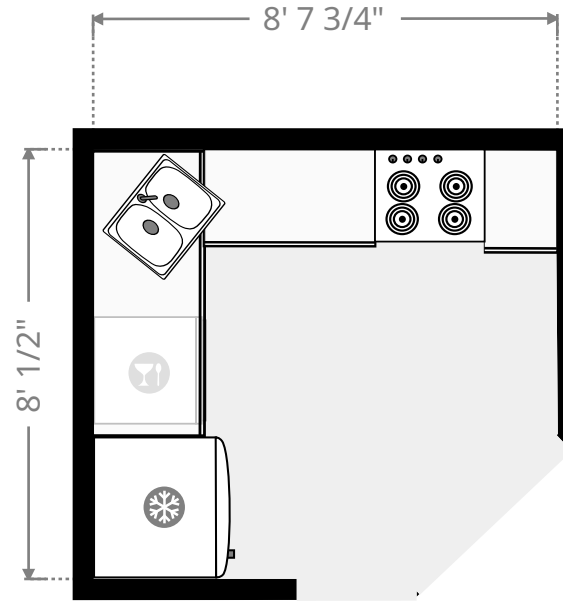
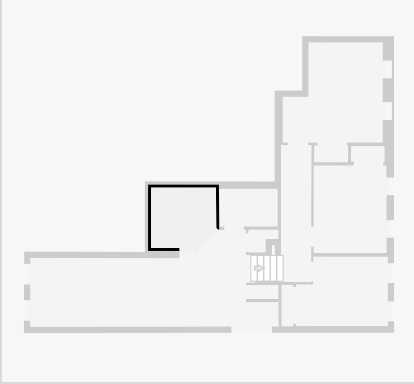


THIS FLOORPLAN IS PROVIDED WITHOUT WARRANTY OF ANY KIND. NAZCA PROPERTIES
DISCLAIMS ANY WARRANTY INCLUDING, WITHOUT LIMITATION, SATISFACTORY QUALITY OR
ACCURACY OF DIMENSIONS.



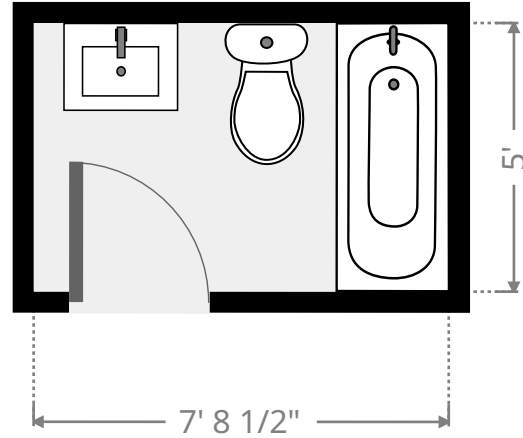
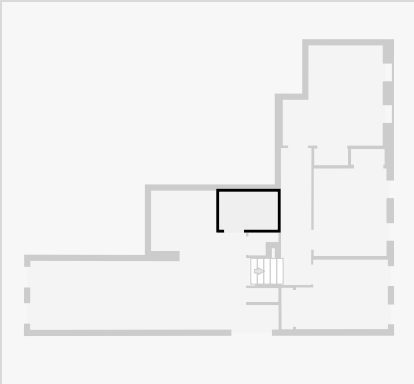
Kitchen

Width: 8'
Length: 8' 7 3/4"
Area: 65.25 sq ft
Perimeter: 31' 7 3/4"
Ceiling Height: 11' 8 1/4"



Bathroom

Width: 5'
Length: 7' 8 3/4"
Area: 38.72 sq ft
Perimeter: 25' 5 3/4"
Ceiling Height: 7' 11 3/4"

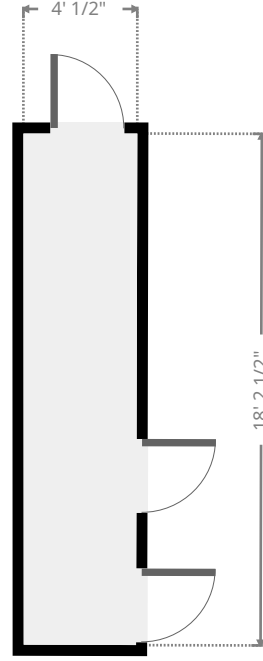
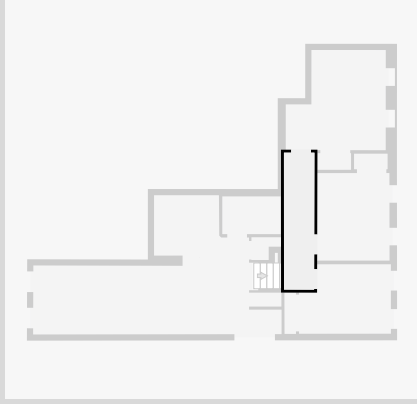


THIS FLOORPLAN IS PROVIDED WITHOUT WARRANTY OF ANY KIND. NAZCA PROPERTIES
DISCLAIMS ANY WARRANTY INCLUDING, WITHOUT LIMITATION, SATISFACTORY QUALITY OR
ACCURACY OF DIMENSIONS.



Hall

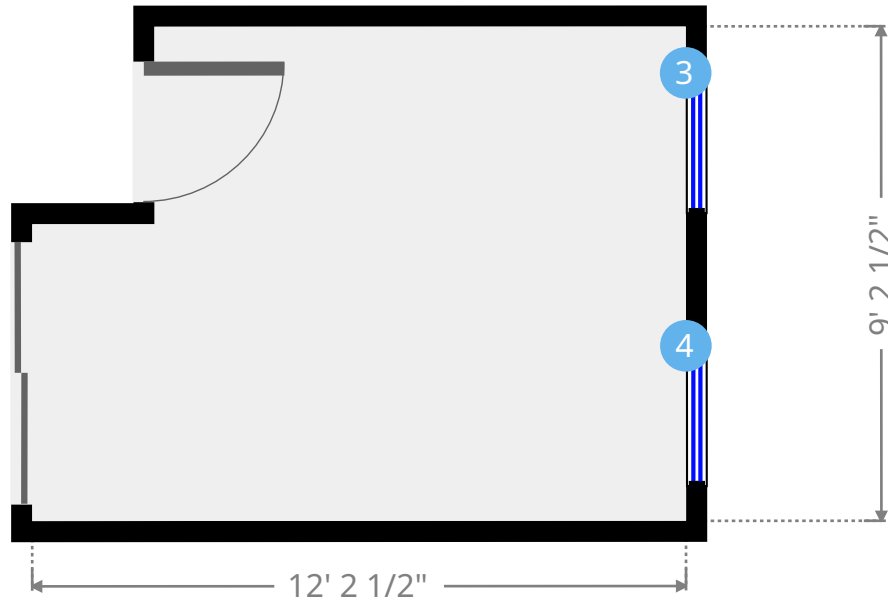
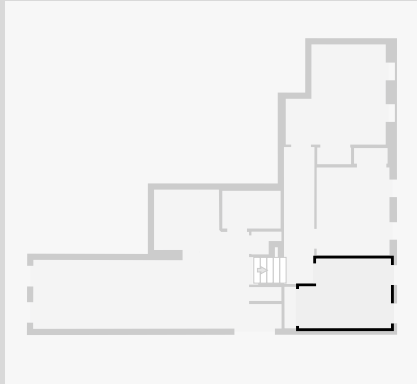
Width: 4' 1/2"
Length: 18' 2 1/4"
Area: 73.08 sq ft
Perimeter: 44' 4 3/4"



THIS FLOORPLAN IS PROVIDED WITHOUT WARRANTY OF ANY KIND. NAZCA PROPERTIES
DISCLAIMS ANY WARRANTY INCLUDING, WITHOUT LIMITATION, SATISFACTORY QUALITY OR
ACCURACY OF DIMENSIONS.

Bedroom

Width: 9' 2 1/2"
Length: 12' 2 1/4"
Area: 103.85 sq ft
Perimeter: 42' 9 1/2"
Ceiling Height: 8' 2 1/2"



3



Hung Window

- Height: 3' 9 1/4"

4



Hung Window

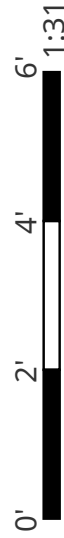
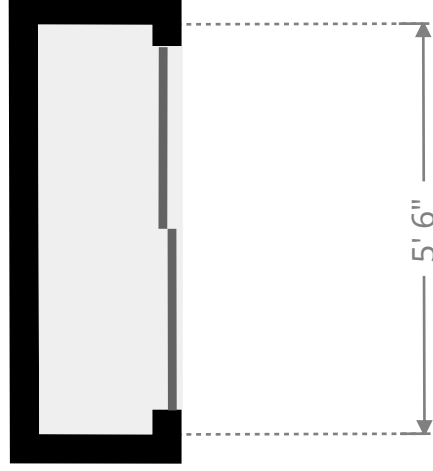
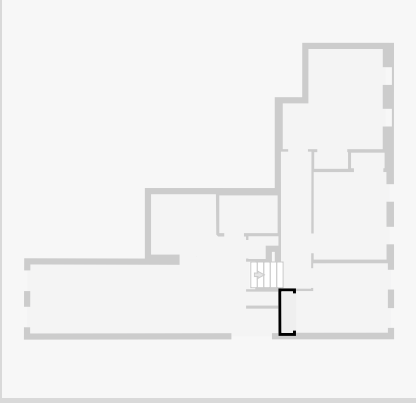
- Height: 3' 9 1/4"

THIS FLOORPLAN IS PROVIDED WITHOUT WARRANTY OF ANY KIND. NAZCA PROPERTIES
DISCLAIMS ANY WARRANTY INCLUDING, WITHOUT LIMITATION, SATISFACTORY QUALITY OR
ACCURACY OF DIMENSIONS.



Closet

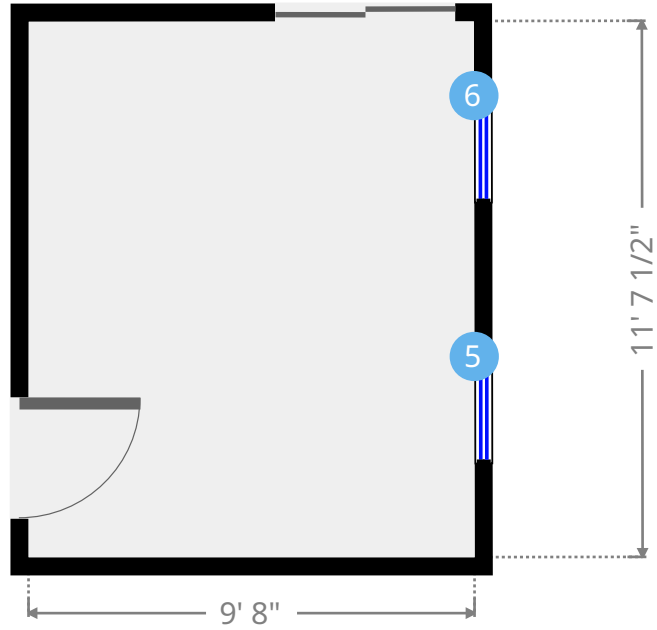
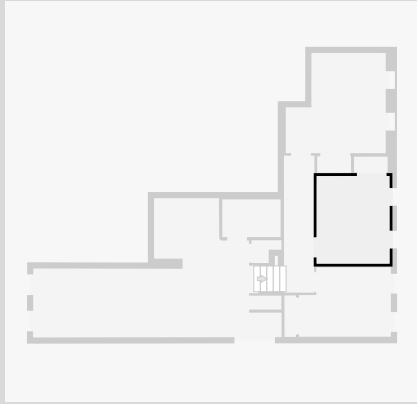
Width: 1' 6 1/2"
Length: 5' 6"
Area: 8.40 sq ft
Perimeter: 14' 3/4"



THIS FLOORPLAN IS PROVIDED WITHOUT WARRANTY OF ANY KIND. NAZCA PROPERTIES
DISCLAIMS ANY WARRANTY INCLUDING, WITHOUT LIMITATION, SATISFACTORY QUALITY OR
ACCURACY OF DIMENSIONS.

Bedroom

Width: 9' 8"
Length: 11' 7 1/2"
Area: 112.08 sq ft
Perimeter: 42' 6 1/4"



5



Hung Window

- Height: 4' 10 3/4"

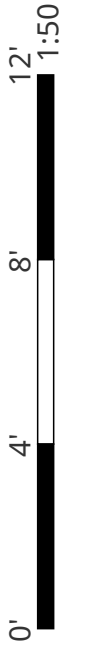
6



Hung Window

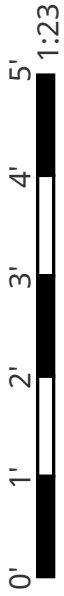
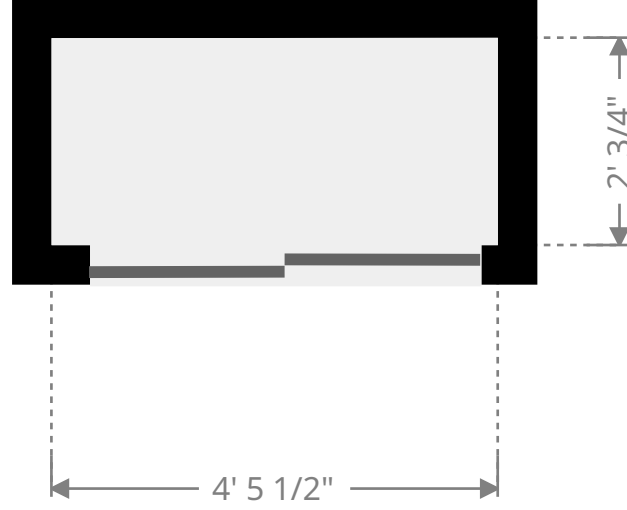
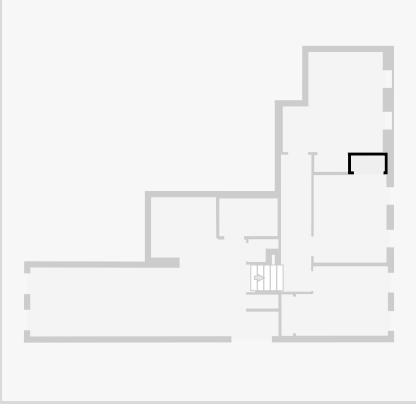
- Height: 4' 10 3/4"

THIS FLOORPLAN IS PROVIDED WITHOUT WARRANTY OF ANY KIND. NAZCA PROPERTIES
DISCLAIMS ANY WARRANTY INCLUDING, WITHOUT LIMITATION, SATISFACTORY QUALITY OR
ACCURACY OF DIMENSIONS.



Closet

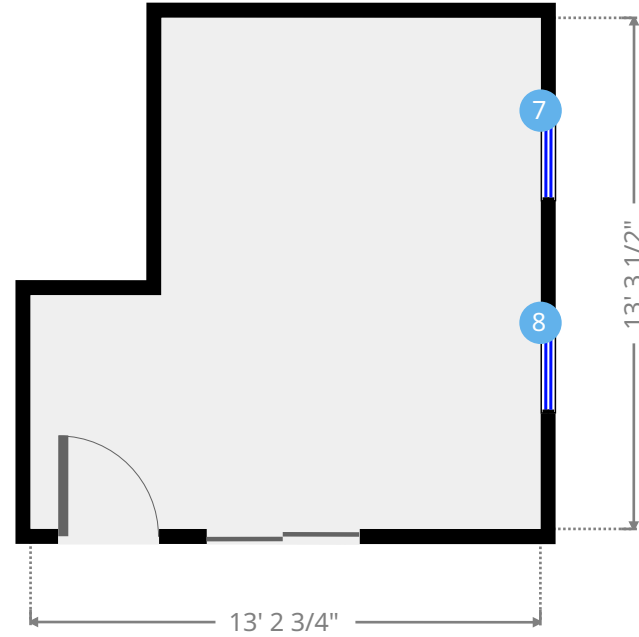
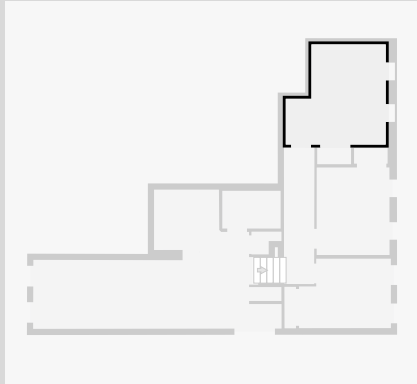
Width: 2' 3/4"
Length: 4' 5 1/2"
Area: 9.19 sq ft
Perimeter: 13' 1/4"



THIS FLOORPLAN IS PROVIDED WITHOUT WARRANTY OF ANY KIND. NAZCA PROPERTIES
DISCLAIMS ANY WARRANTY INCLUDING, WITHOUT LIMITATION, SATISFACTORY QUALITY OR
ACCURACY OF DIMENSIONS.

Bedroom

Width: 13' 2 3/4"
 Length: 13' 3 1/4"
 Area: 151.67 sq ft
 Perimeter: 53' 1 1/4"
 Ceiling Height: 8' 3 1/2"



7



Hung Window

- Height: 4' 11 1/4"

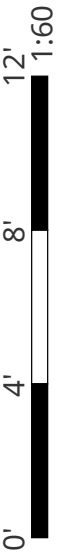
8



Hung Window

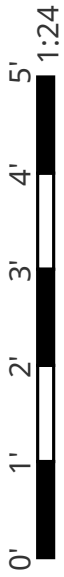
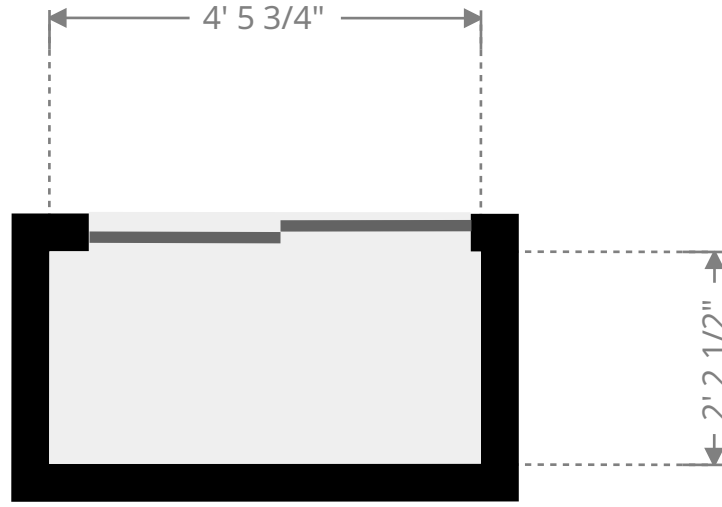
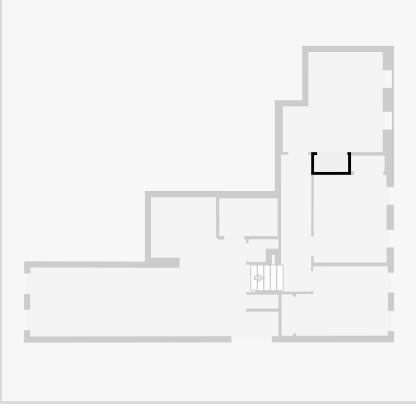
- Height: 4' 11 1/4"

THIS FLOORPLAN IS PROVIDED WITHOUT WARRANTY OF ANY KIND. NAZCA PROPERTIES
 DISCLAIMS ANY WARRANTY INCLUDING, WITHOUT LIMITATION, SATISFACTORY QUALITY OR
 ACCURACY OF DIMENSIONS.



Closet

Width: 2' 2 1/2"
Length: 4' 6"
Area: 9.91 sq ft
Perimeter: 13' 4 3/4"



THIS FLOORPLAN IS PROVIDED WITHOUT WARRANTY OF ANY KIND. NAZCA PROPERTIES
DISCLAIMS ANY WARRANTY INCLUDING, WITHOUT LIMITATION, SATISFACTORY QUALITY OR
ACCURACY OF DIMENSIONS.