

445 W. McMicken A...

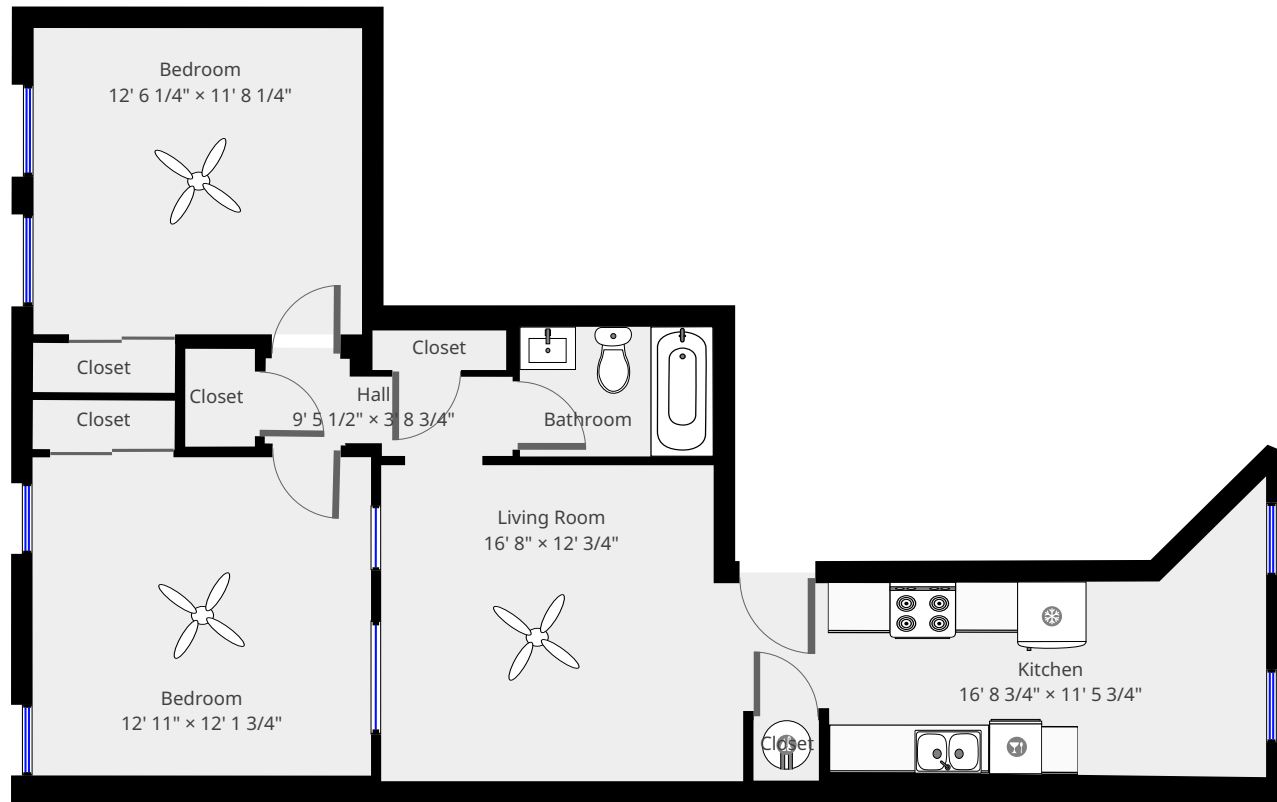
2nd Floor



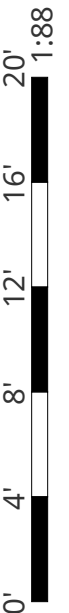
Nazca Properties
manager@nazcaproperties.com
513-535-2154

Statistics

Area: 885 sq ft
1 Floor
2 Bedrooms
1 Bathroom

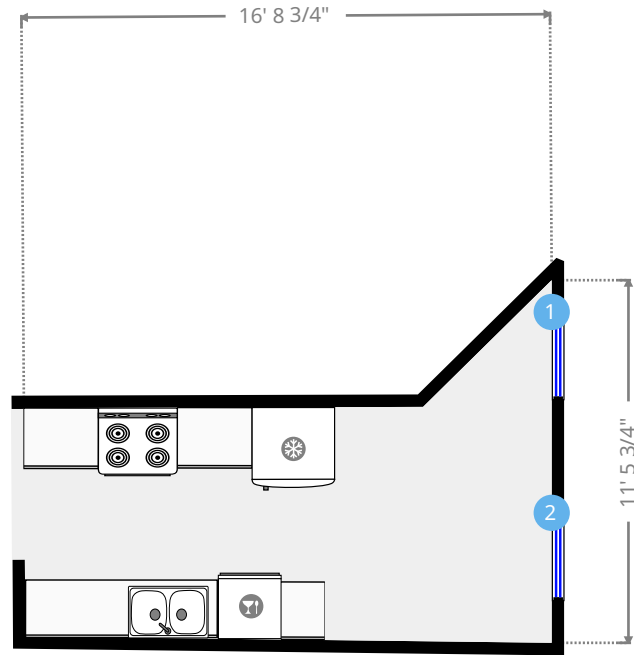
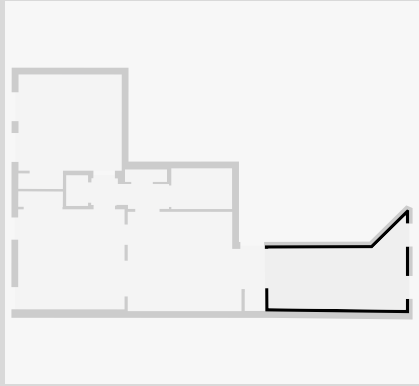


THIS FLOORPLAN IS PROVIDED WITHOUT WARRANTY OF ANY KIND. NAZCA PROPERTIES
DISCLAIMS ANY WARRANTY INCLUDING, WITHOUT LIMITATION, SATISFACTORY QUALITY OR
ACCURACY OF DIMENSIONS.



Kitchen

Width: 11' 5 3/4"
 Length: 16' 8 3/4"
 Area: 130.68 sq ft
 Perimeter: 53' 8 1/4"
 Ceiling Height: 10' 6"



THIS FLOORPLAN IS PROVIDED WITHOUT WARRANTY OF ANY KIND. NAZCA PROPERTIES
 DISCLAIMS ANY WARRANTY INCLUDING, WITHOUT LIMITATION, SATISFACTORY QUALITY OR
 ACCURACY OF DIMENSIONS.

1



Hung Window

- Height: 6' 10 1/2"

2



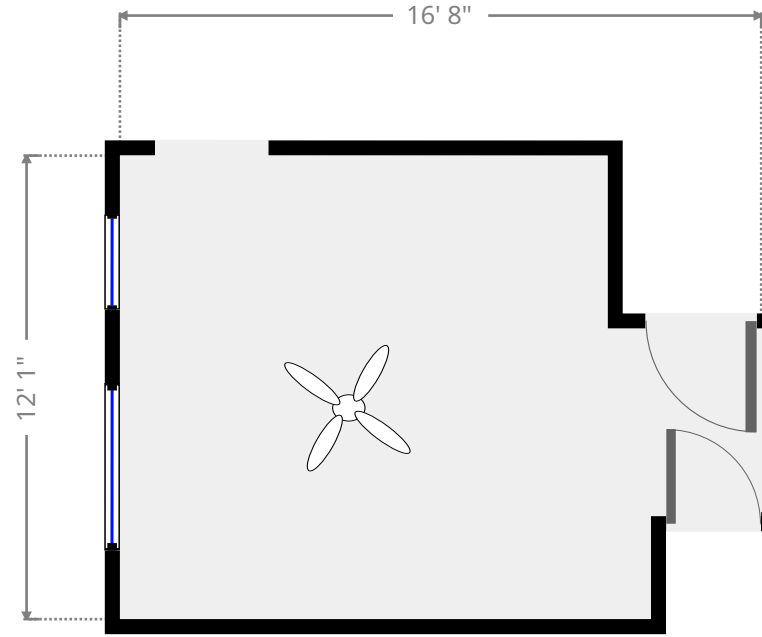
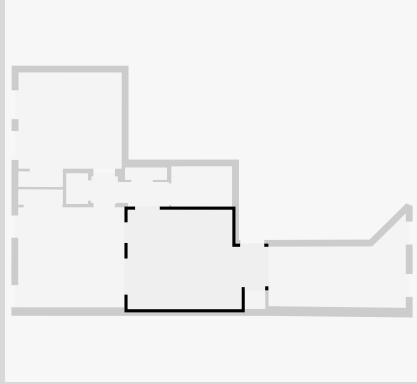
Hung Window

- Height: 6' 10 1/2"



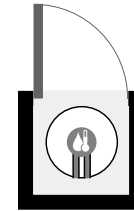
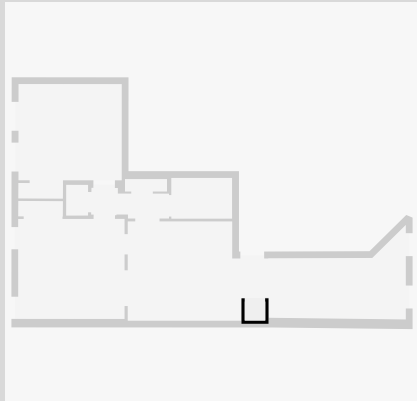
Living Room

Width: 12' 3/4"
Length: 16' 8"
Area: 175.31 sq ft
Perimeter: 57' 5 1/2"
Ceiling Height: 10' 6 3/4"

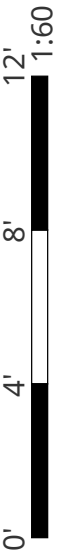


Closet

Width: 2' 3 3/4"
Length: 2' 6"
Area: 5.74 sq ft
Perimeter: 9' 7"

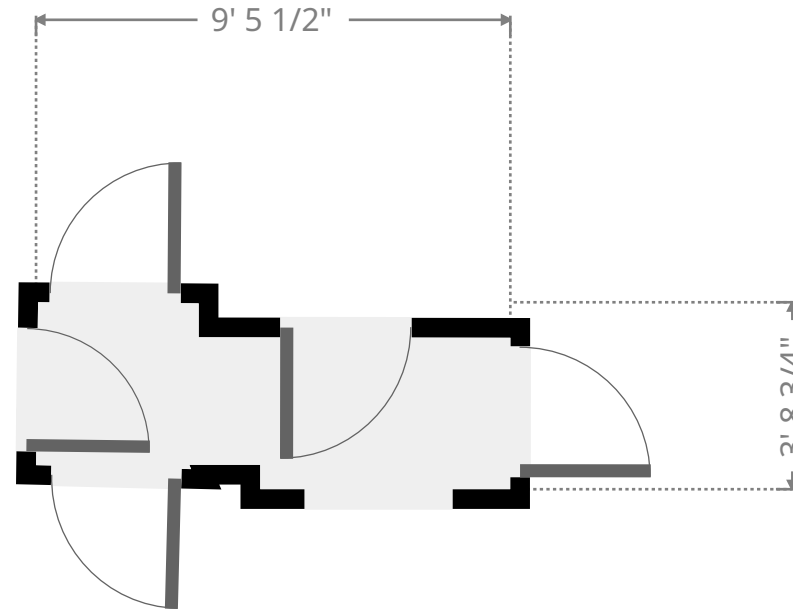
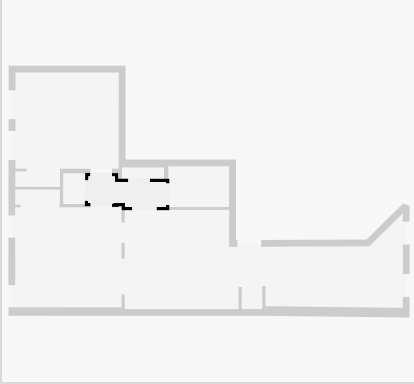


THIS FLOORPLAN IS PROVIDED WITHOUT WARRANTY OF ANY KIND. NAZCA PROPERTIES
DISCLAIMS ANY WARRANTY INCLUDING, WITHOUT LIMITATION, SATISFACTORY QUALITY OR
ACCURACY OF DIMENSIONS.



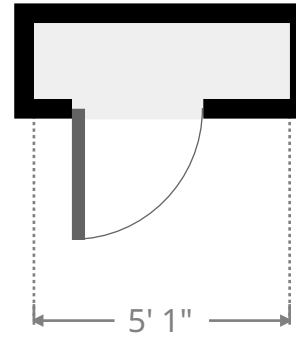
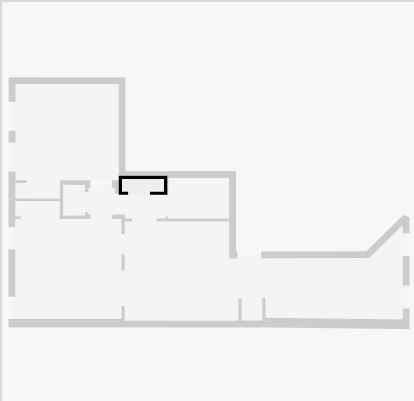
Hall

Width: 3' 8 3/4"
Length: 9' 5 1/2"
Area: 28.73 sq ft
Perimeter: 26' 5"
Ceiling Height: 10' 7"



Closet

Width: 1' 6"
Length: 5' 1 1/4"
Area: 7.69 sq ft
Perimeter: 13' 2 1/2"

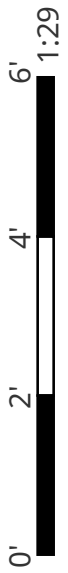
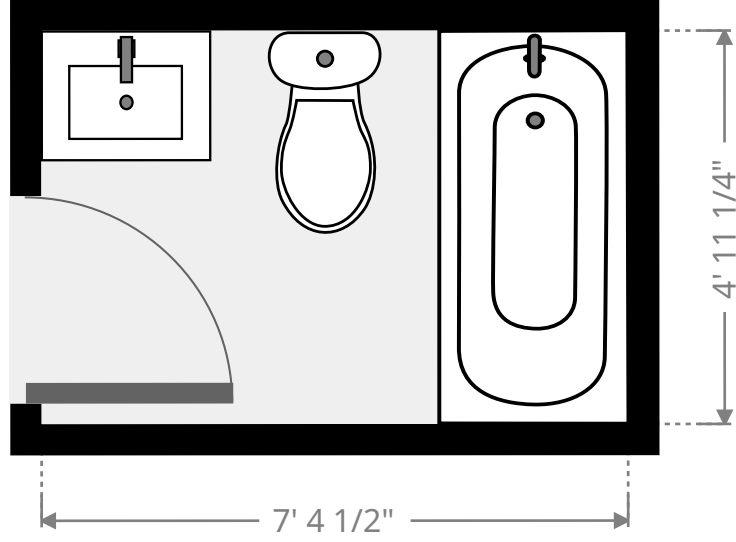
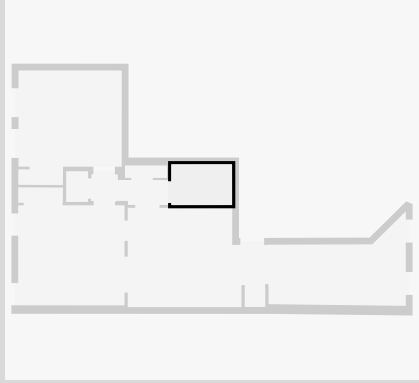


THIS FLOORPLAN IS PROVIDED WITHOUT WARRANTY OF ANY KIND. NAZCA PROPERTIES
DISCLAIMS ANY WARRANTY INCLUDING, WITHOUT LIMITATION, SATISFACTORY QUALITY OR
ACCURACY OF DIMENSIONS.



Bathroom

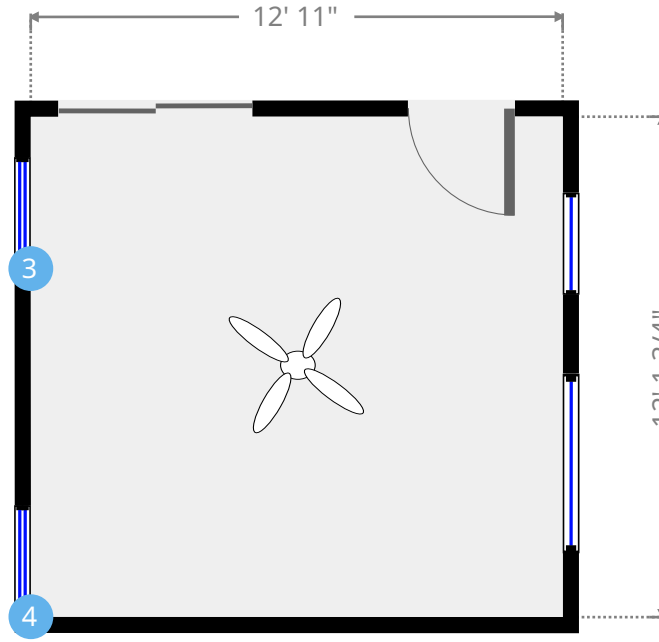
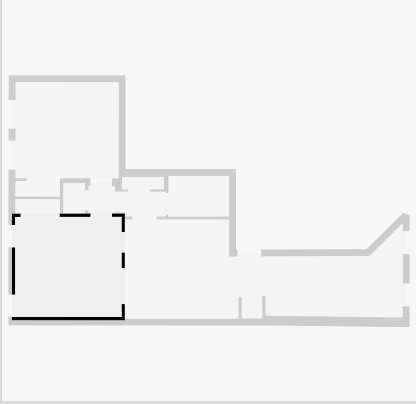
Width: 4' 11 1/4"
Length: 7' 4 1/2"
Area: 36.45 sq ft
Perimeter: 24' 7 1/2"
Ceiling Height: 8'



THIS FLOORPLAN IS PROVIDED WITHOUT WARRANTY OF ANY KIND. NAZCA PROPERTIES
DISCLAIMS ANY WARRANTY INCLUDING, WITHOUT LIMITATION, SATISFACTORY QUALITY OR
ACCURACY OF DIMENSIONS.

Bedroom

Width: 12' 1 3/4"
Length: 12' 11"
Area: 156.70 sq ft
Perimeter: 50' 1 1/4"



3



Hung Window

- Height: 4' 8"

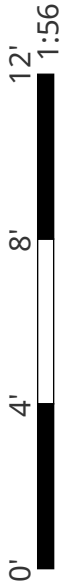
4



Hung Window

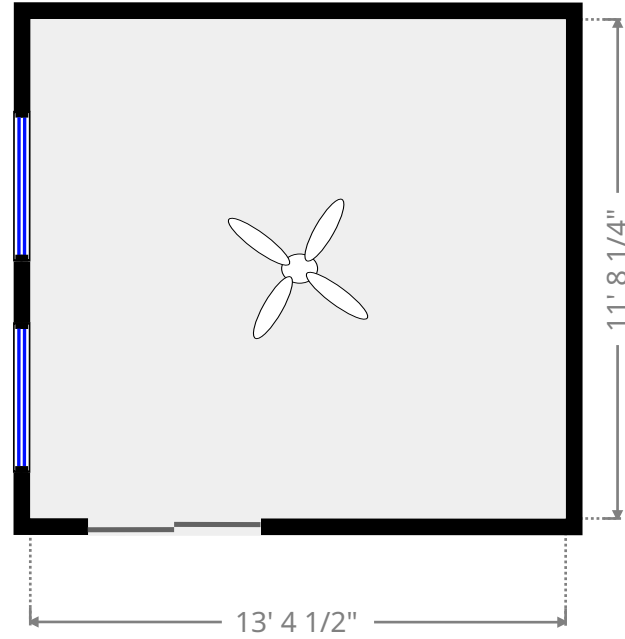
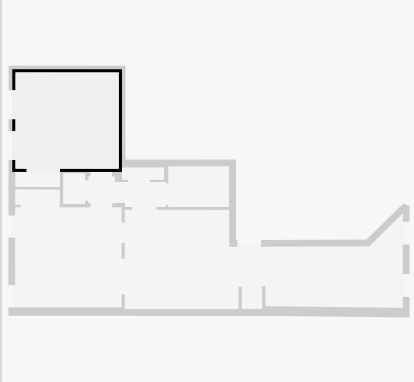
- Height: 4' 8"

THIS FLOORPLAN IS PROVIDED WITHOUT WARRANTY OF ANY KIND. NAZCA PROPERTIES
DISCLAIMS ANY WARRANTY INCLUDING, WITHOUT LIMITATION, SATISFACTORY QUALITY OR
ACCURACY OF DIMENSIONS.



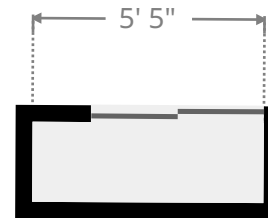
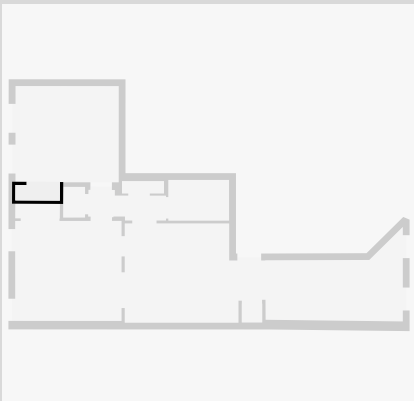
Bedroom

Width: 11' 8 1/4"
Length: 12' 6 1/4"
Area: 146.32 sq ft
Perimeter: 48' 5"
Ceiling Height: 8' 4 3/4"

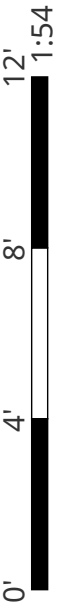


Closet

Width: 1' 10 1/2"
Length: 5' 5"
Area: 10.14 sq ft
Perimeter: 14' 7"

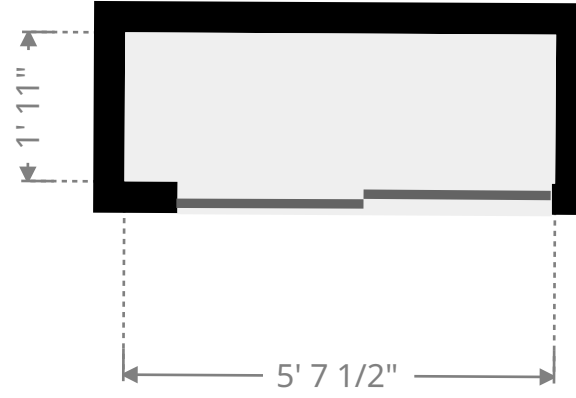
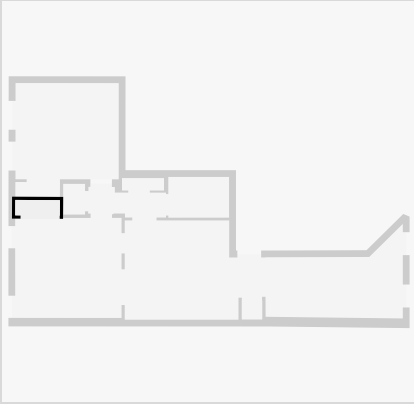


THIS FLOORPLAN IS PROVIDED WITHOUT WARRANTY OF ANY KIND. NAZCA PROPERTIES
DISCLAIMS ANY WARRANTY INCLUDING, WITHOUT LIMITATION, SATISFACTORY QUALITY OR
ACCURACY OF DIMENSIONS.



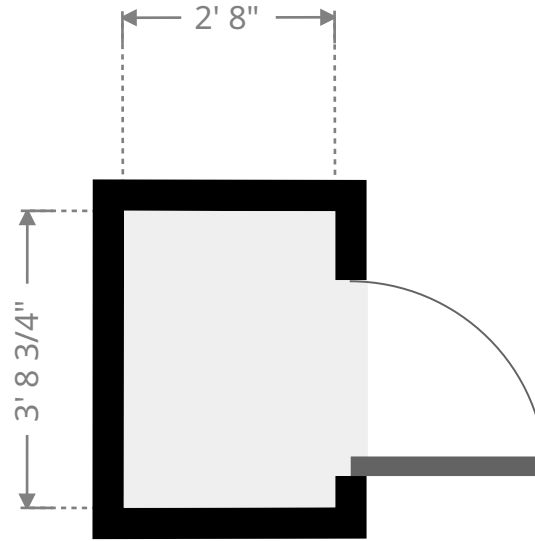
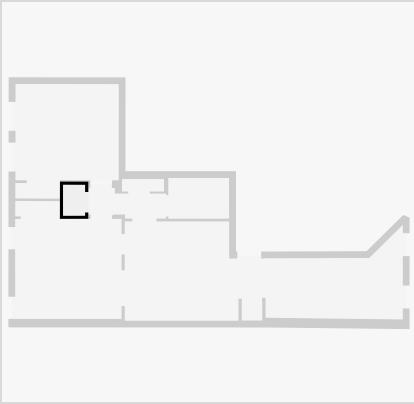
Closet

Width: 1' 10 1/2"
Length: 5' 5"
Area: 10.14 sq ft
Perimeter: 14' 7"



Closet

Width: 2' 8"
Length: 3' 8 3/4"
Area: 9.90 sq ft
Perimeter: 12' 9 1/4"



THIS FLOORPLAN IS PROVIDED WITHOUT WARRANTY OF ANY KIND. NAZCA PROPERTIES
DISCLAIMS ANY WARRANTY INCLUDING, WITHOUT LIMITATION, SATISFACTORY QUALITY OR
ACCURACY OF DIMENSIONS.

