

# 445 W McMicken A...

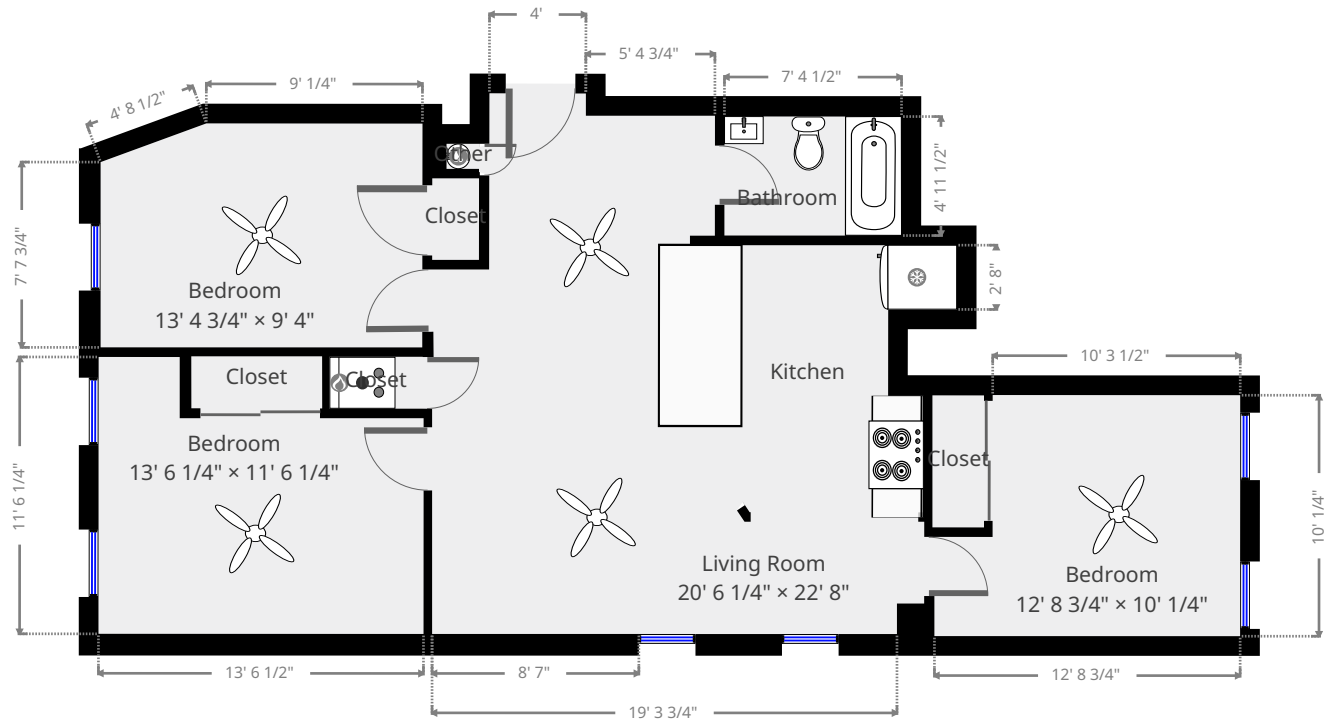
## 2nd Floor



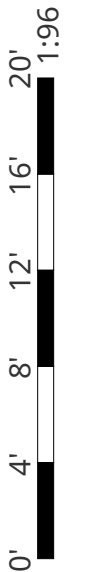
**Nazca Properties**  
 manager@nazcaproperties.com  
 513-535-2154

### Statistics

Area: 980 sq ft  
 1 Floor  
 3 Bedrooms  
 1 Bathroom

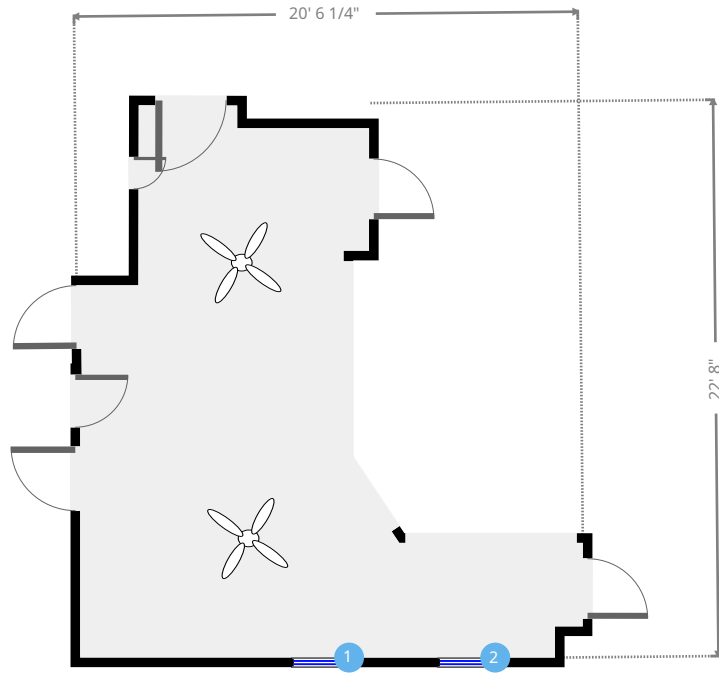
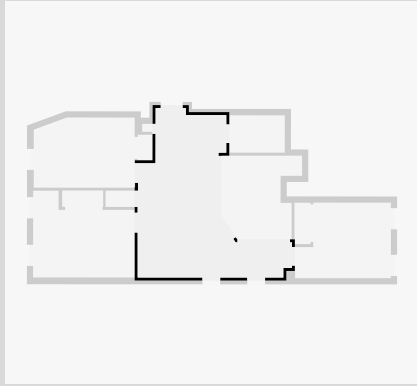


THIS FLOORPLAN IS PROVIDED WITHOUT WARRANTY OF ANY KIND. NAZCA PROPERTIES  
 DISCLAIMS ANY WARRANTY INCLUDING, WITHOUT LIMITATION, SATISFACTORY QUALITY OR  
 ACCURACY OF DIMENSIONS.



# Living Room

Width: 20' 6 1/4"  
Length: 22' 8"  
Area: 272.88 sq ft  
Perimeter: 86' 5 3/4"  
Ceiling Height: 10' 3 3/4"



1



Hung Window

- Height: 4' 10 3/4"

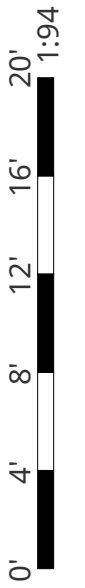
2



Hung Window

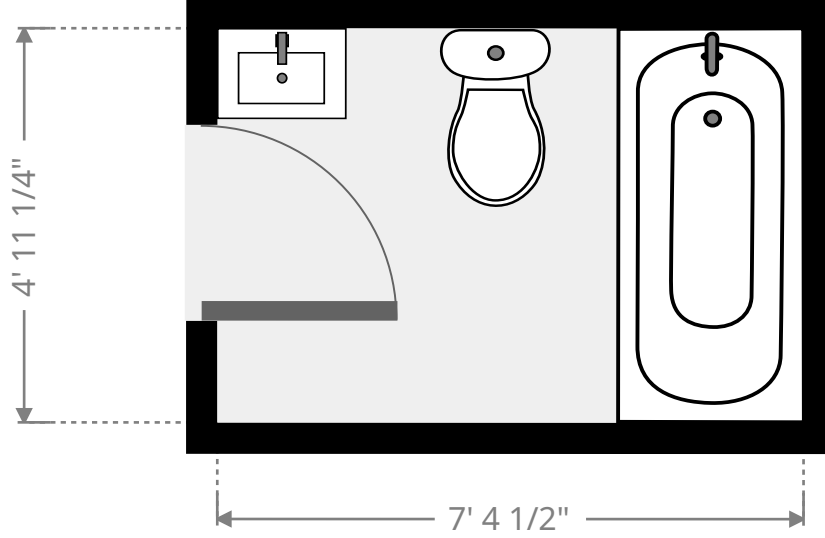
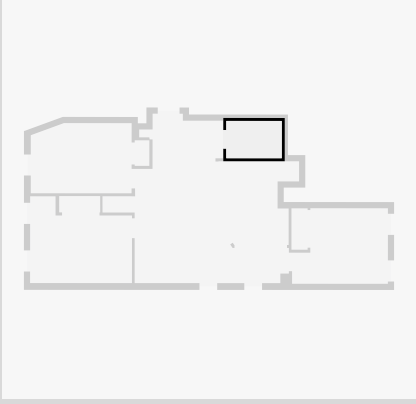
- Height: 4' 10 3/4"

THIS FLOORPLAN IS PROVIDED WITHOUT WARRANTY OF ANY KIND. NAZCA PROPERTIES  
DISCLAIMS ANY WARRANTY INCLUDING, WITHOUT LIMITATION, SATISFACTORY QUALITY OR  
ACCURACY OF DIMENSIONS.



# Bathroom

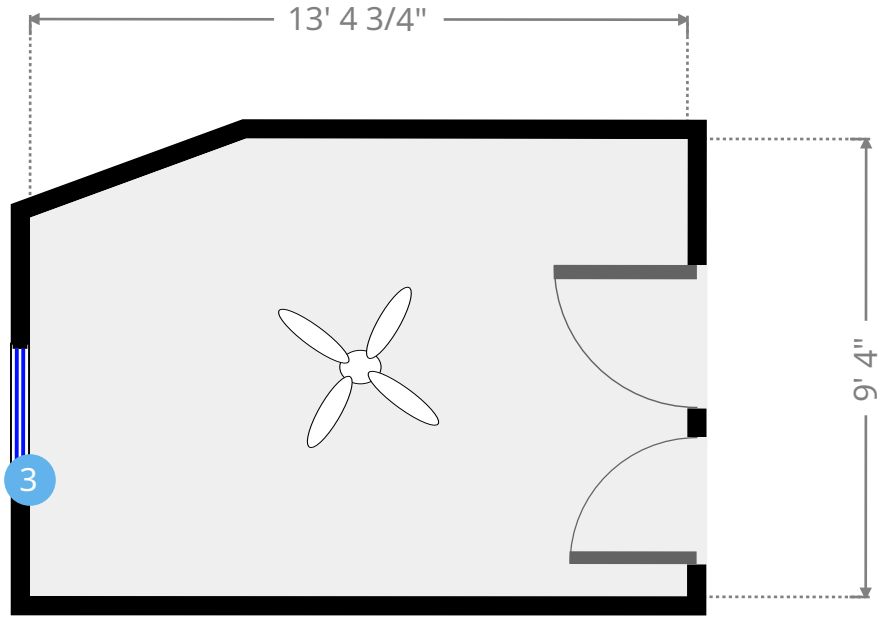
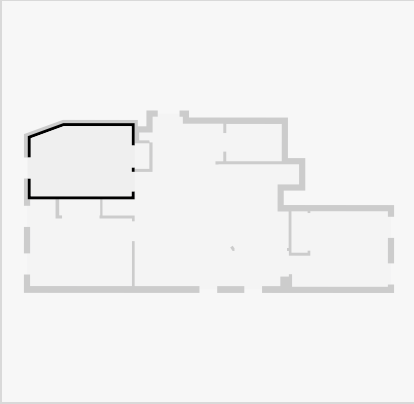
Width: 4' 11 1/2"  
Length: 7' 4 1/2"  
Area: 36.49 sq ft  
Perimeter: 24' 7 3/4"



THIS FLOORPLAN IS PROVIDED WITHOUT WARRANTY OF ANY KIND. NAZCA PROPERTIES  
DISCLAIMS ANY WARRANTY INCLUDING, WITHOUT LIMITATION, SATISFACTORY QUALITY OR  
ACCURACY OF DIMENSIONS.

# Bedroom

Width: 9' 4"  
Length: 13' 4 3/4"  
Area: 121.21 sq ft  
Perimeter: 44' 1"



3



Hung Window

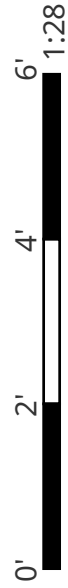
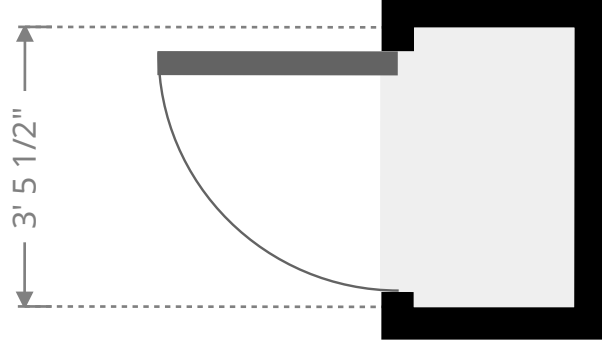
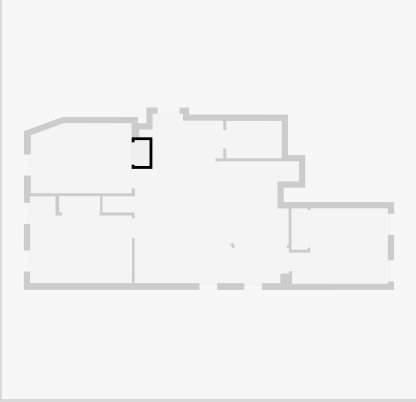
- Height: 6' 11"

THIS FLOORPLAN IS PROVIDED WITHOUT WARRANTY OF ANY KIND. NAZCA PROPERTIES  
DISCLAIMS ANY WARRANTY INCLUDING, WITHOUT LIMITATION, SATISFACTORY QUALITY OR  
ACCURACY OF DIMENSIONS.



# Closet

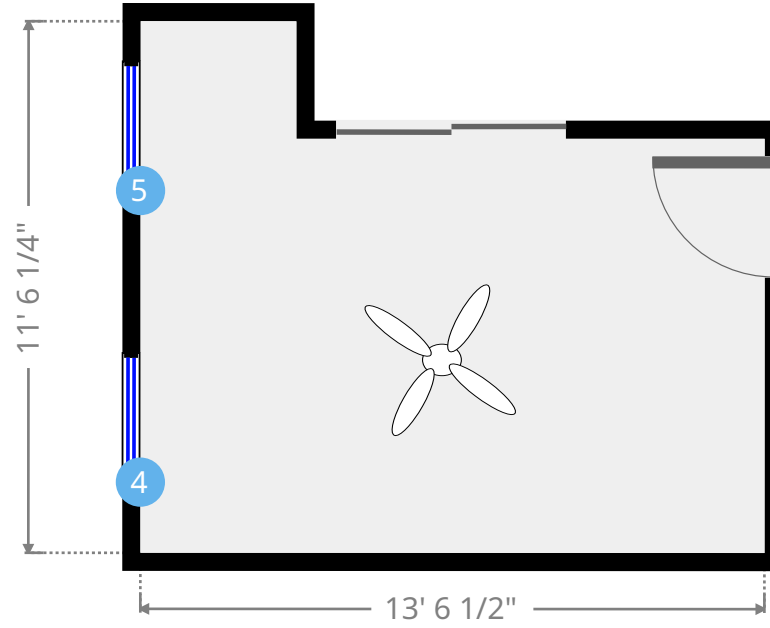
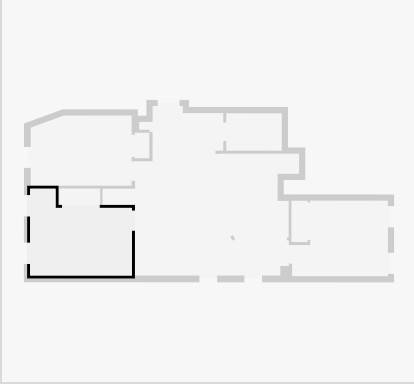
Width: 1' 11 1/2"  
Length: 3' 4 3/4"  
Area: 6.60 sq ft  
Perimeter: 10' 8"



THIS FLOORPLAN IS PROVIDED WITHOUT WARRANTY OF ANY KIND. NAZCA PROPERTIES  
DISCLAIMS ANY WARRANTY INCLUDING, WITHOUT LIMITATION, SATISFACTORY QUALITY OR  
ACCURACY OF DIMENSIONS.

# Bedroom

Width: 11' 6 1/4"  
Length: 13' 6 1/4"  
Area: 129.95 sq ft  
Perimeter: 50' 1"  
Ceiling Height: 10' 5 1/4"



4



Hung Window

- Height: 6' 10 1/2"

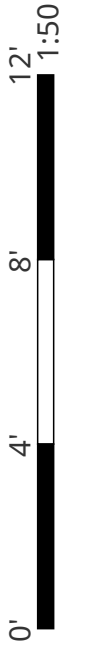
5



Hung Window

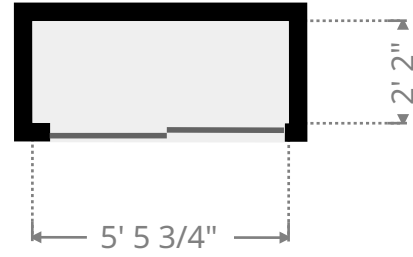
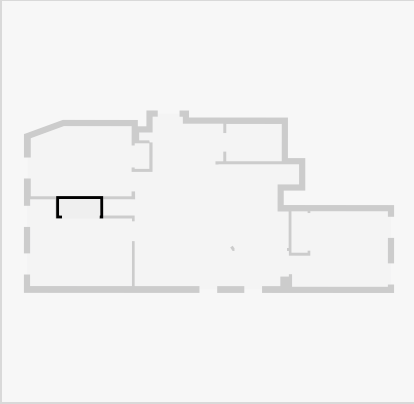
- Height: 6' 10 1/2"

THIS FLOORPLAN IS PROVIDED WITHOUT WARRANTY OF ANY KIND. NAZCA PROPERTIES  
DISCLAIMS ANY WARRANTY INCLUDING, WITHOUT LIMITATION, SATISFACTORY QUALITY OR  
ACCURACY OF DIMENSIONS.



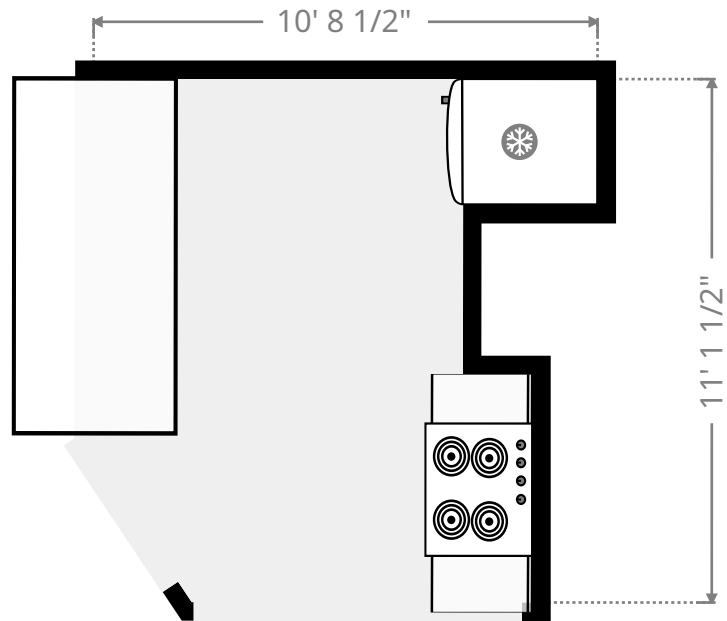
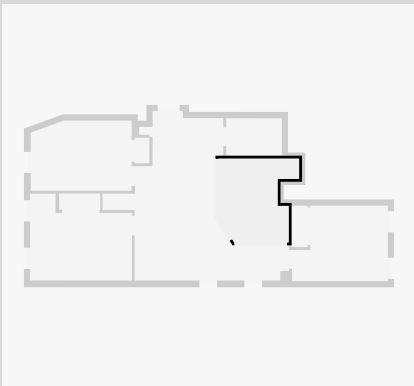
## Closet

Width: 2' 2"  
Length: 5' 5 1/4"  
Area: 11.79 sq ft  
Perimeter: 15' 2 1/2"

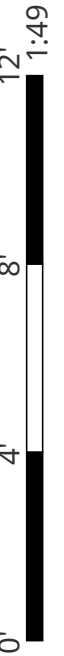


## Kitchen

Width: 10' 8 1/2"  
Length: 11' 1 1/2"  
Area: 98.71 sq ft  
Perimeter: 45' 1 1/2"  
Ceiling Height: 10' 2 3/4"

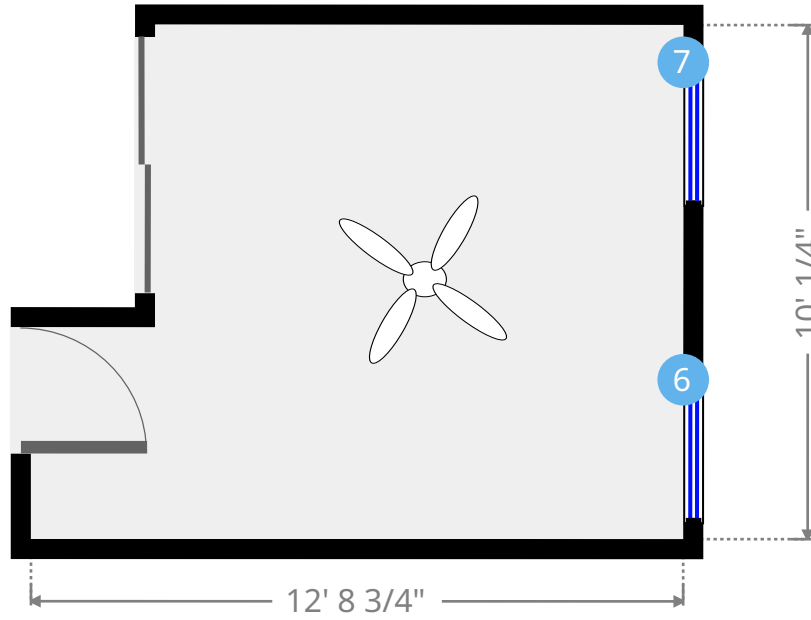
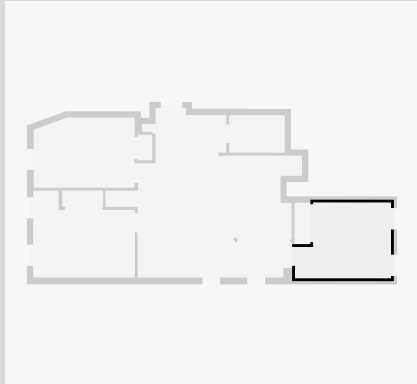


THIS FLOORPLAN IS PROVIDED WITHOUT WARRANTY OF ANY KIND. NAZCA PROPERTIES  
DISCLAIMS ANY WARRANTY INCLUDING, WITHOUT LIMITATION, SATISFACTORY QUALITY OR  
ACCURACY OF DIMENSIONS.



# Bedroom

Width: 10' 1/4"  
 Length: 12' 8 3/4"  
 Area: 113.26 sq ft  
 Perimeter: 45' 6"  
 Ceiling Height: 8' 2 1/4"



6



Hung Window

- Height: 4' 8"

7



Hung Window

- Height: 4' 8"

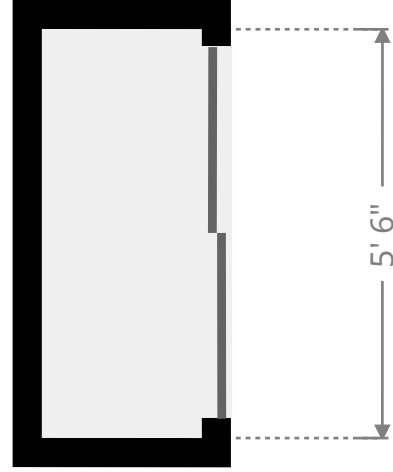
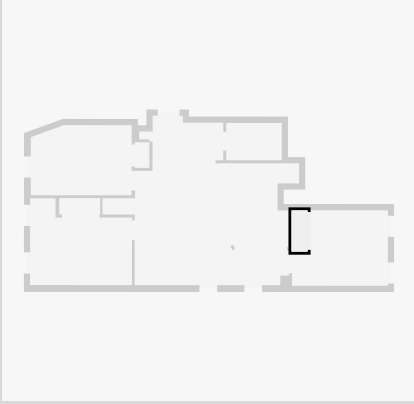
THIS FLOORPLAN IS PROVIDED WITHOUT WARRANTY OF ANY KIND. NAZCA PROPERTIES  
 DISCLAIMS ANY WARRANTY INCLUDING, WITHOUT LIMITATION, SATISFACTORY QUALITY OR  
 ACCURACY OF DIMENSIONS.





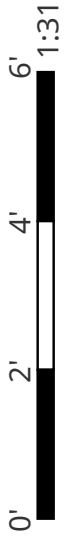
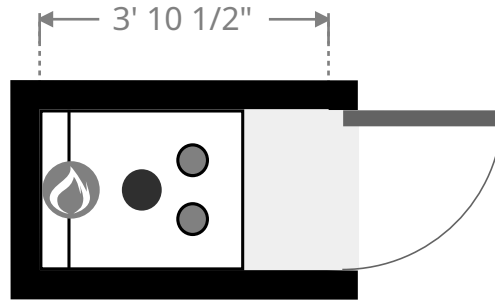
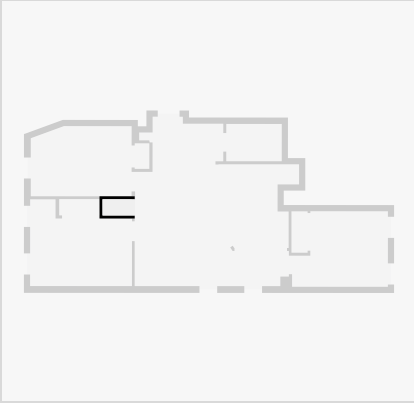
## Closet

Width: 2' 1 3/4"  
Length: 5' 6"  
Area: 11.78 sq ft  
Perimeter: 15' 3 1/4"



## Closet

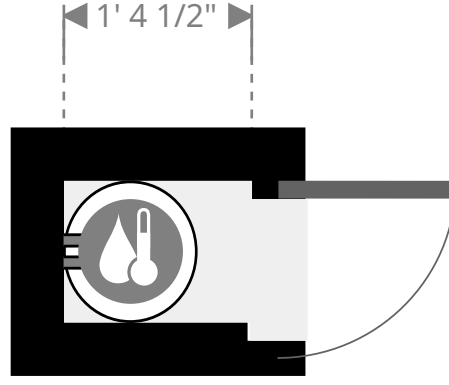
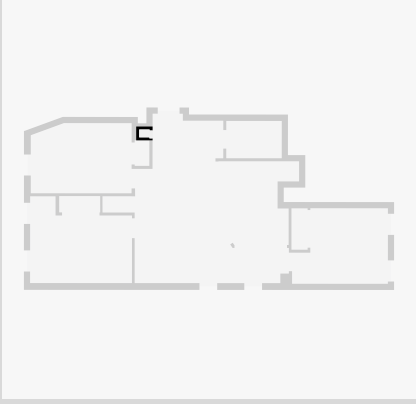
Width: 2' 2"  
Length: 3' 10 1/2"  
Area: 8.38 sq ft  
Perimeter: 12' 1"



THIS FLOORPLAN IS PROVIDED WITHOUT WARRANTY OF ANY KIND. NAZCA PROPERTIES  
DISCLAIMS ANY WARRANTY INCLUDING, WITHOUT LIMITATION, SATISFACTORY QUALITY OR  
ACCURACY OF DIMENSIONS.

## Other

Width: 1' 1/2"  
Length: 1' 4 1/2"  
Area: 1.44 sq ft  
Perimeter: 4' 10 1/4"



THIS FLOORPLAN IS PROVIDED WITHOUT WARRANTY OF ANY KIND. NAZCA PROPERTIES  
DISCLAIMS ANY WARRANTY INCLUDING, WITHOUT LIMITATION, SATISFACTORY QUALITY OR  
ACCURACY OF DIMENSIONS.