

**445 W.  
McMicken A...**

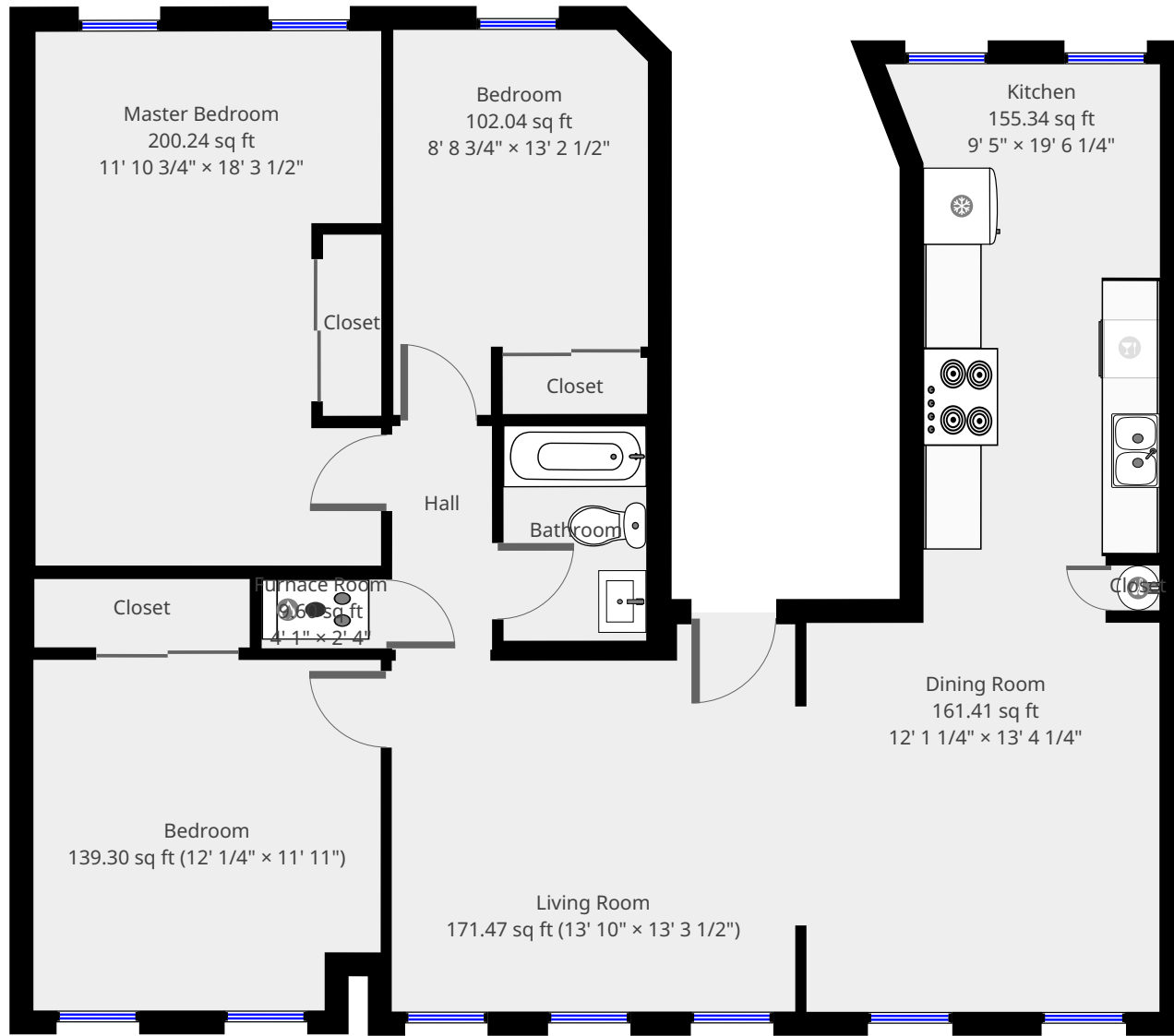
3rd Floor



**Nazca Properties**  
manager@nazcaproperties.com  
513-535-2154

**Statistics**

Area: 1249 sq ft  
1 Floor  
3 Bedrooms  
1 Bathroom

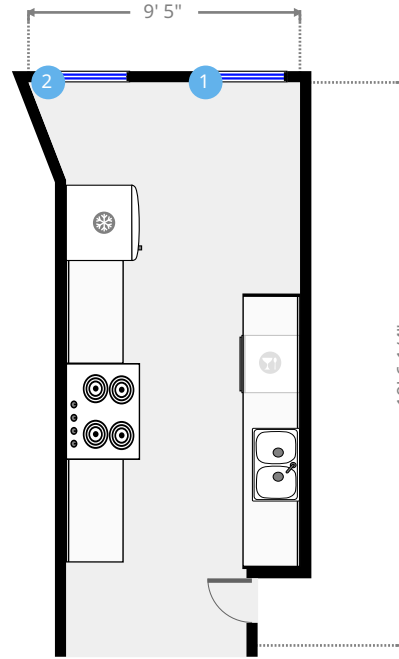
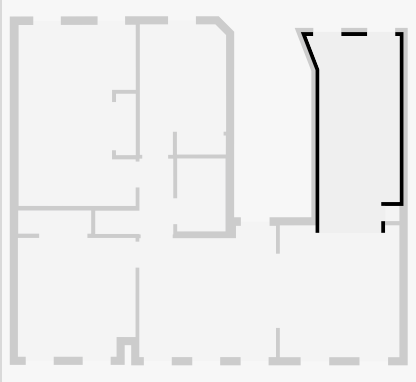


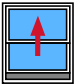
THIS FLOORPLAN IS PROVIDED WITHOUT WARRANTY OF ANY KIND. NAZCA PROPERTIES  
DISCLAIMS ANY WARRANTY INCLUDING, WITHOUT LIMITATION, SATISFACTORY QUALITY OR  
ACCURACY OF DIMENSIONS.

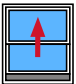


# Kitchen

Width: 9' 5"  
 Length: 19' 6 1/4"  
 Area: 155.34 sq ft  
 Perimeter: 56' 9 3/4"  
 Ceiling Height: 9' 8 1/2"



1  Hung Window - Height: 6' 5 1/2"

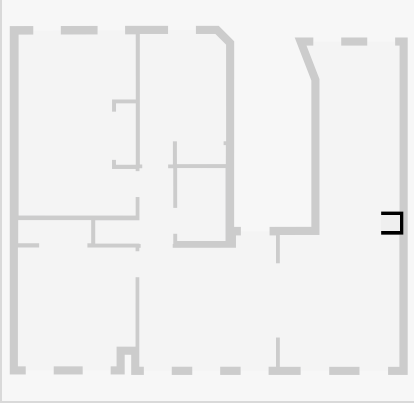
2  Hung Window - Height: 6' 5 1/2"

THIS FLOORPLAN IS PROVIDED WITHOUT WARRANTY OF ANY KIND. NAZCA PROPERTIES  
 DISCLAIMS ANY WARRANTY INCLUDING, WITHOUT LIMITATION, SATISFACTORY QUALITY OR  
 ACCURACY OF DIMENSIONS.



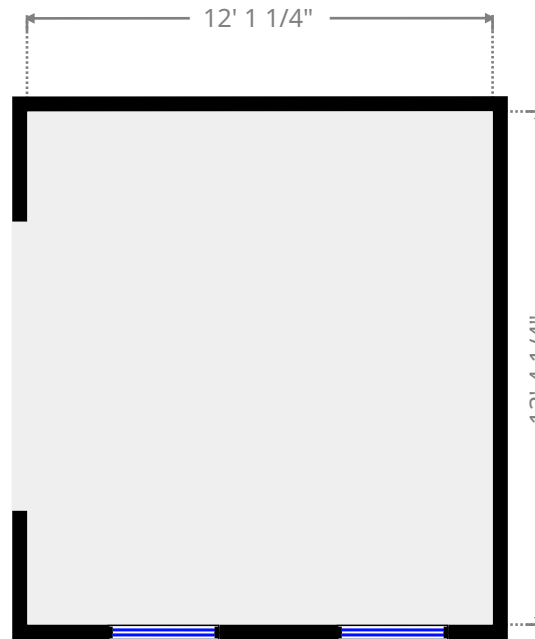
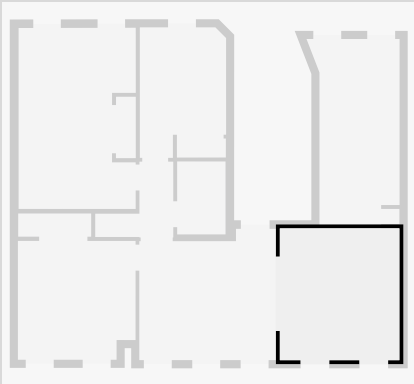
## Closet

Width: 1' 5 1/2"  
Length: 1' 6 1/2"  
Area: 2.23 sq ft  
Perimeter: 5' 11 3/4"

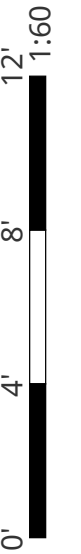


## Dining Room

Width: 12' 1 1/4"  
Length: 13' 4 1/4"  
Area: 161.41 sq ft  
Perimeter: 50' 10 1/2"  
Ceiling Height: 9' 7 1/4"

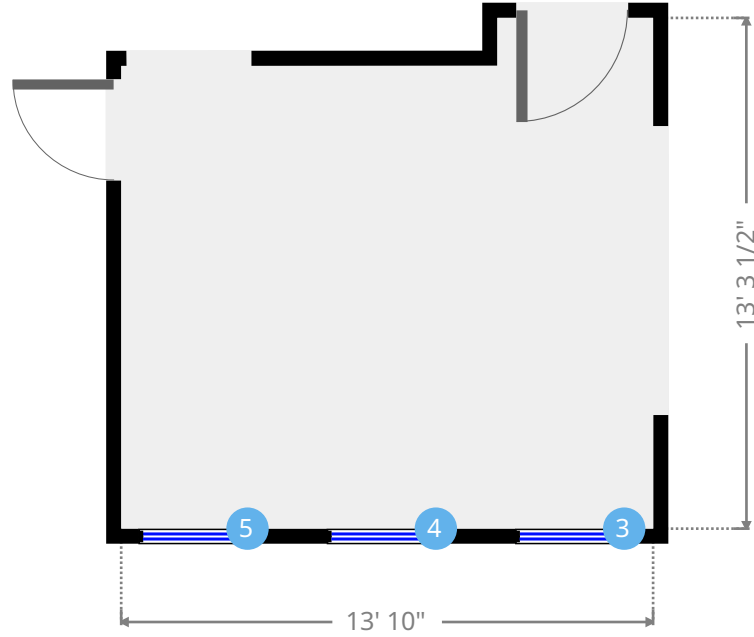
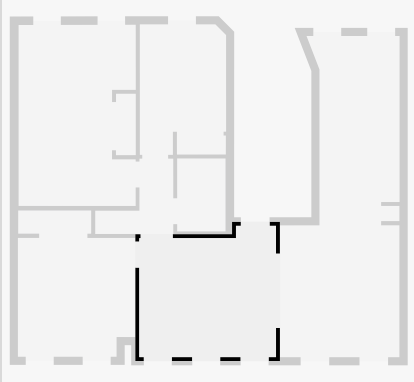


THIS FLOORPLAN IS PROVIDED WITHOUT WARRANTY OF ANY KIND. NAZCA PROPERTIES  
DISCLAIMS ANY WARRANTY INCLUDING, WITHOUT LIMITATION, SATISFACTORY QUALITY OR  
ACCURACY OF DIMENSIONS.



# Living Room

Width: 13' 3 1/2"  
 Length: 13' 10"  
 Area: 171.47 sq ft  
 Perimeter: 54' 2 3/4"  
 Ceiling Height: 9' 9 1/4"



3



Hung Window

- Height: 4' 8 1/2"

4



Hung Window

- Height: 4' 8 1/2"

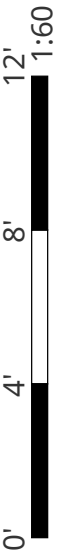
5



Hung Window

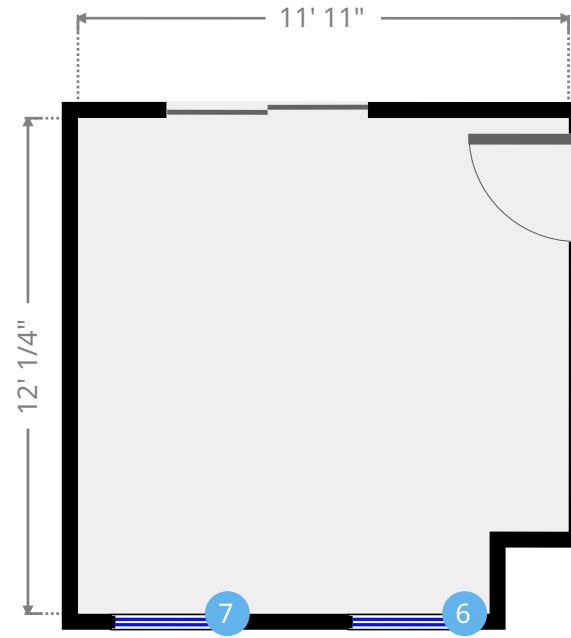
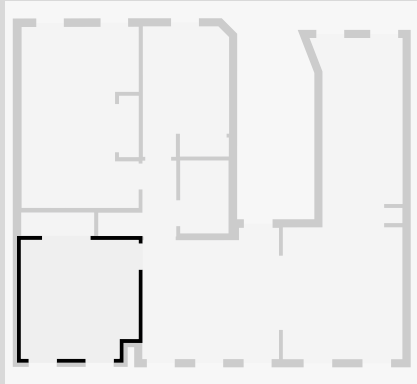
- Height: 4' 8 1/2"

THIS FLOORPLAN IS PROVIDED WITHOUT WARRANTY OF ANY KIND. NAZCA PROPERTIES  
 DISCLAIMS ANY WARRANTY INCLUDING, WITHOUT LIMITATION, SATISFACTORY QUALITY OR  
 ACCURACY OF DIMENSIONS.



# Bedroom

Width: 11' 11"  
Length: 12' 1/4"  
Area: 139.30 sq ft  
Perimeter: 47' 10 1/4"  
Ceiling Height: 9' 10 1/4"



6



Hung Window

- Height: 4' 8"

7



Hung Window

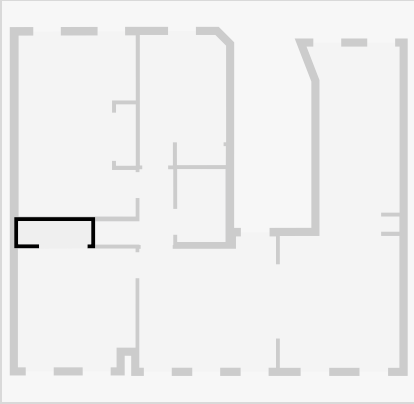
- Height: 4' 8"

THIS FLOORPLAN IS PROVIDED WITHOUT WARRANTY OF ANY KIND. NAZCA PROPERTIES  
DISCLAIMS ANY WARRANTY INCLUDING, WITHOUT LIMITATION, SATISFACTORY QUALITY OR  
ACCURACY OF DIMENSIONS.



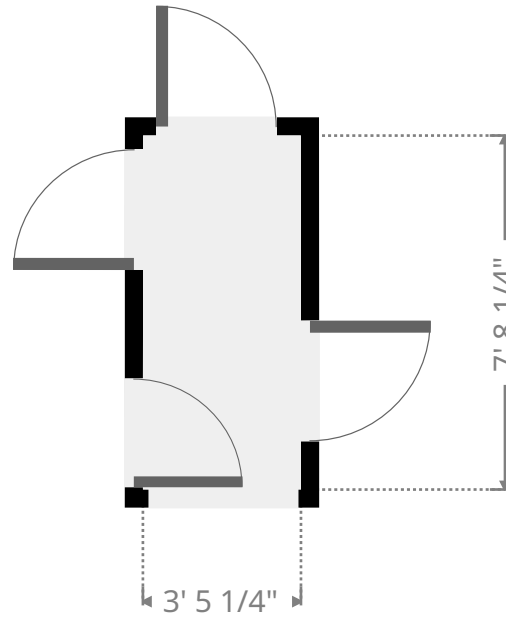
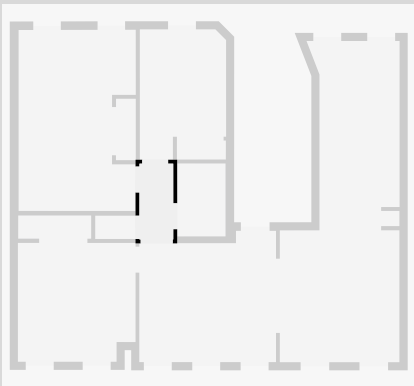
## Closet

Width: 2' 4 1/4"  
Length: 7' 4 1/2"  
Area: 17.30 sq ft  
Perimeter: 19' 5 1/2"

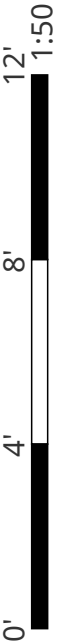


## Hall

Width: 3' 5"  
Length: 7' 8 1/4"  
Area: 26.25 sq ft  
Perimeter: 22' 2 1/4"  
Ceiling Height: 7' 7"

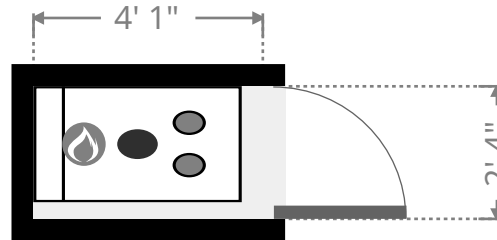
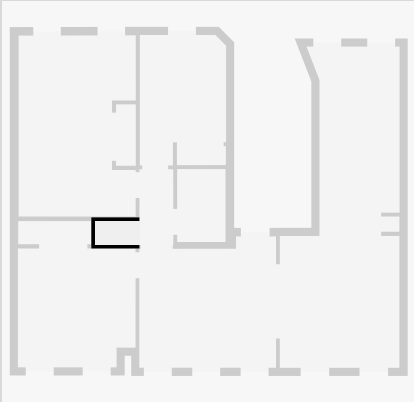


THIS FLOORPLAN IS PROVIDED WITHOUT WARRANTY OF ANY KIND. NAZCA PROPERTIES  
DISCLAIMS ANY WARRANTY INCLUDING, WITHOUT LIMITATION, SATISFACTORY QUALITY OR  
ACCURACY OF DIMENSIONS.



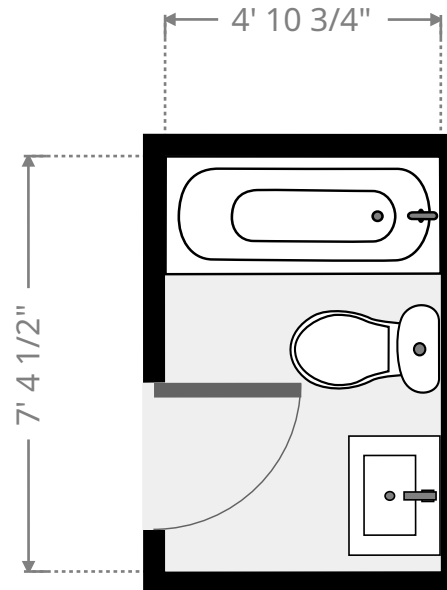
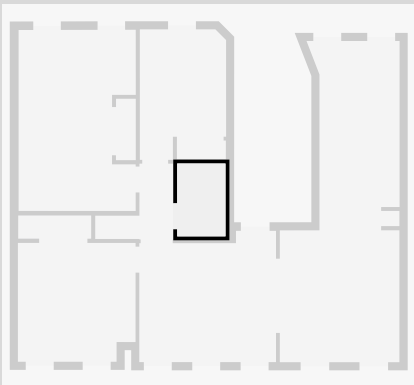
## Furnace Room

Width: 2' 4"  
 Length: 4' 1"  
 Area: 9.60 sq ft  
 Perimeter: 12' 10 1/4"

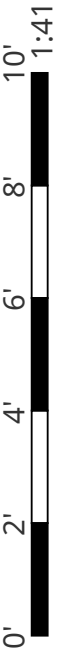


## Bathroom

Width: 4' 10 3/4"  
 Length: 7' 4 1/2"  
 Area: 36.11 sq ft  
 Perimeter: 24' 6 1/2"  
 Ceiling Height: 8' 1/2"

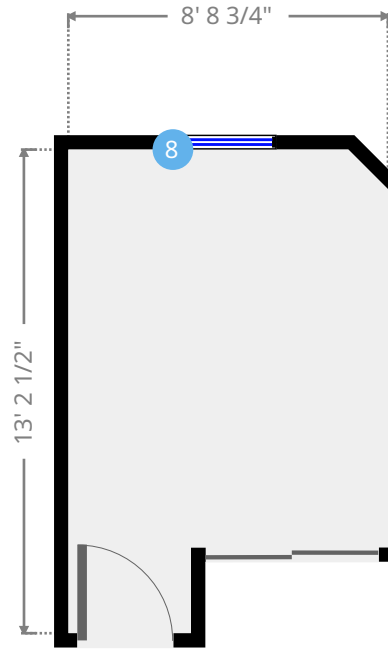
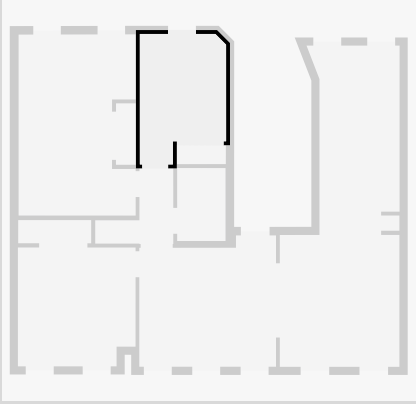


THIS FLOORPLAN IS PROVIDED WITHOUT WARRANTY OF ANY KIND. NAZCA PROPERTIES  
 DISCLAIMS ANY WARRANTY INCLUDING, WITHOUT LIMITATION, SATISFACTORY QUALITY OR  
 ACCURACY OF DIMENSIONS.



# Bedroom

Width: 8' 8 3/4"  
Length: 13' 2 1/2"  
Area: 102.04 sq ft  
Perimeter: 43' 2 3/4"

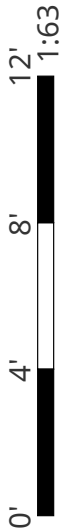


8



Hung Window

- Height: 6' 5 3/4"

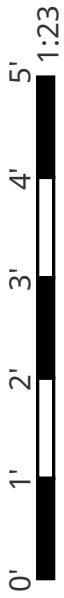
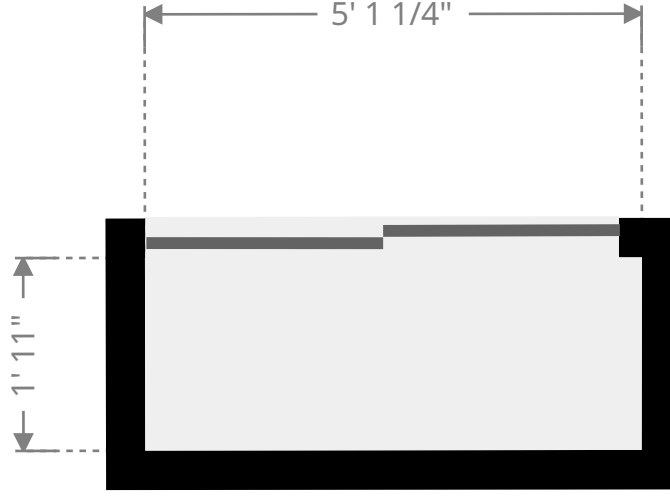
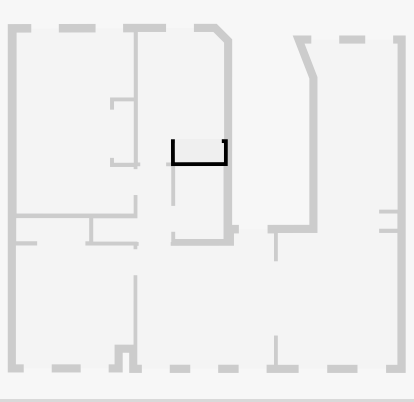


THIS FLOORPLAN IS PROVIDED WITHOUT WARRANTY OF ANY KIND. NAZCA PROPERTIES  
DISCLAIMS ANY WARRANTY INCLUDING, WITHOUT LIMITATION, SATISFACTORY QUALITY OR  
ACCURACY OF DIMENSIONS.



# Closet

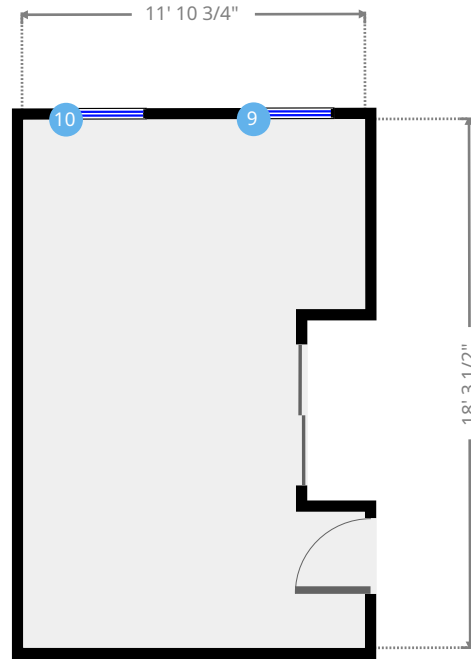
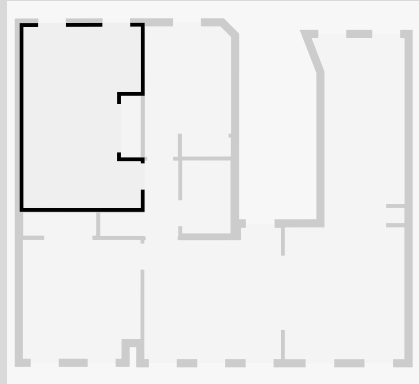
Width: 1' 11"  
Length: 4' 11 1/2"  
Area: 9.52 sq ft  
Perimeter: 13' 9"



THIS FLOORPLAN IS PROVIDED WITHOUT WARRANTY OF ANY KIND. NAZCA PROPERTIES  
DISCLAIMS ANY WARRANTY INCLUDING, WITHOUT LIMITATION, SATISFACTORY QUALITY OR  
ACCURACY OF DIMENSIONS.

# Master Bedroom

Width: 11' 10 3/4"  
 Length: 18' 3 1/2"  
 Area: 200.24 sq ft  
 Perimeter: 65' 1 1/2"  
 Ceiling Height: 9' 8 3/4"



THIS FLOORPLAN IS PROVIDED WITHOUT WARRANTY OF ANY KIND. NAZCA PROPERTIES  
 DISCLAIMS ANY WARRANTY INCLUDING, WITHOUT LIMITATION, SATISFACTORY QUALITY OR  
 ACCURACY OF DIMENSIONS.

9



Hung Window

- Height: 6' 5 1/2"

10



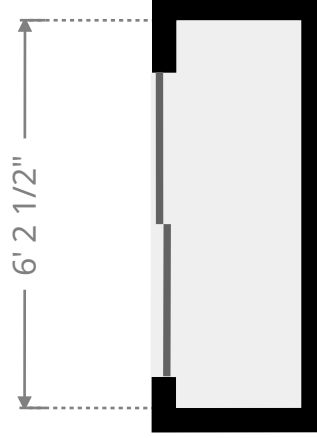
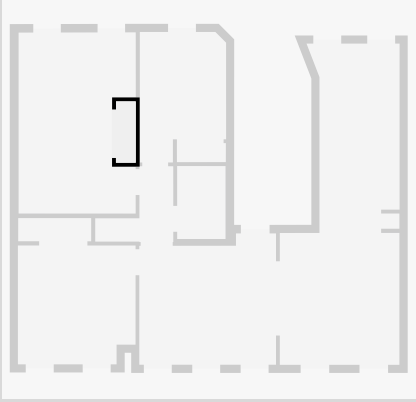
Hung Window

- Height: 6' 5 1/2"



# Closet

Width: 2' 1/4"  
Length: 6' 2 1/2"  
Area: 12.44 sq ft  
Perimeter: 16' 5 1/4"



THIS FLOORPLAN IS PROVIDED WITHOUT WARRANTY OF ANY KIND. NAZCA PROPERTIES  
DISCLAIMS ANY WARRANTY INCLUDING, WITHOUT LIMITATION, SATISFACTORY QUALITY OR  
ACCURACY OF DIMENSIONS.