

519 W
McMicken Av...

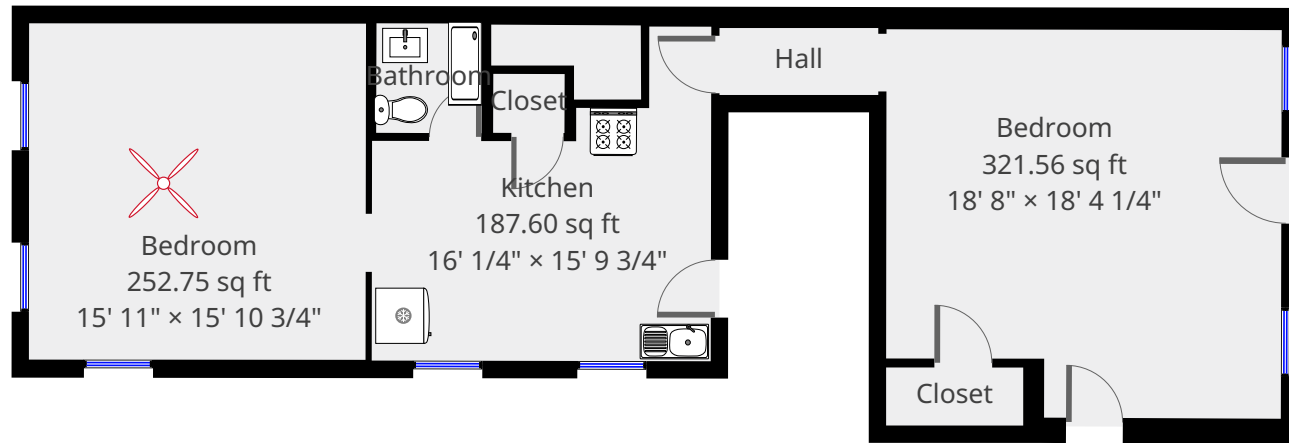
Ground Floor



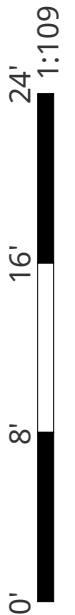
Nazca Properties
manager@nazcaproperties.com
513-535-2154

Statistics

Area: 1034 sq ft
1 Floor
2 Bedrooms
1 Bathroom

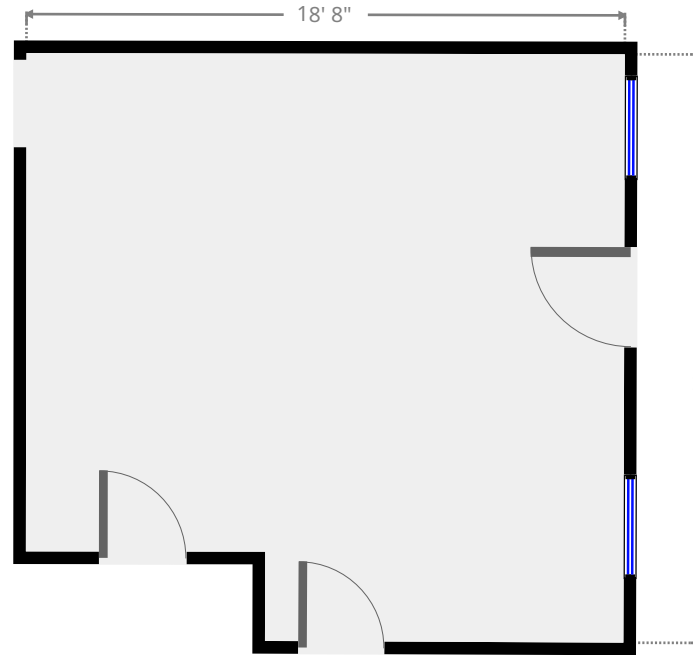
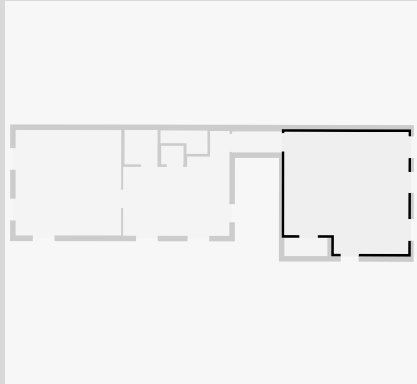


THIS FLOORPLAN IS PROVIDED WITHOUT WARRANTY OF ANY KIND. NAZCA PROPERTIES
DISCLAIMS ANY WARRANTY INCLUDING, WITHOUT LIMITATION, SATISFACTORY QUALITY OR
ACCURACY OF DIMENSIONS.



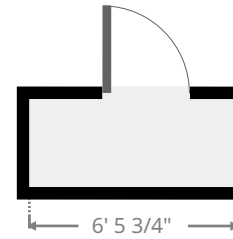
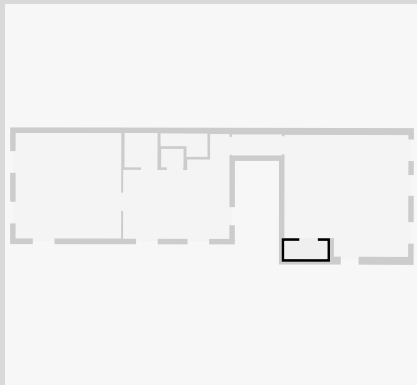
Bedroom

Width: 18' 4 1/4"
Length: 18' 8"
Area: 321.56 sq ft
Perimeter: 74' 1/2"
Ceiling Height: 10' 9"



Closet

Width: 2' 8 3/4"
Length: 6' 5 3/4"
Area: 17.74 sq ft
Perimeter: 18' 5 1/4"
Ceiling Height: 10' 9"

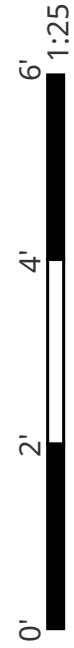
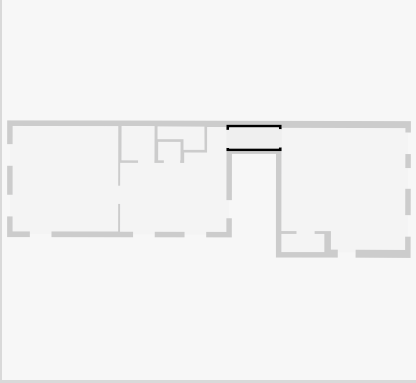


THIS FLOORPLAN IS PROVIDED WITHOUT WARRANTY OF ANY KIND. NAZCA PROPERTIES
DISCLAIMS ANY WARRANTY INCLUDING, WITHOUT LIMITATION, SATISFACTORY QUALITY OR
ACCURACY OF DIMENSIONS.



Hall

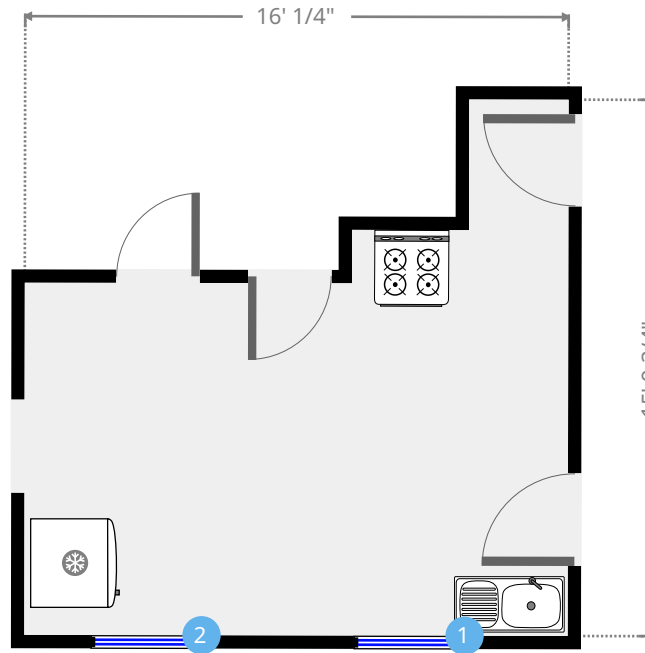
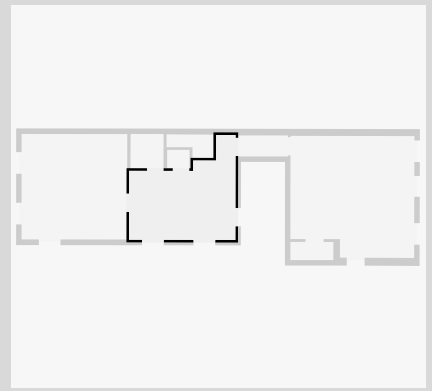
Width: 3' 2"
Length: 7' 6"
Area: 23.72 sq ft
Perimeter: 21' 4"
Ceiling Height: 10' 9"





THIS FLOORPLAN IS PROVIDED WITHOUT WARRANTY OF ANY KIND. NAZCA PROPERTIES
DISCLAIMS ANY WARRANTY INCLUDING, WITHOUT LIMITATION, SATISFACTORY QUALITY OR
ACCURACY OF DIMENSIONS.

Kitchen

Width: 15' 9 3/4"
 Length: 16' 1/4"
 Area: 187.60 sq ft
 Perimeter: 63' 7 3/4"
 Ceiling Height: 10' 9"



1  Hung Window - Height: 7' 4"

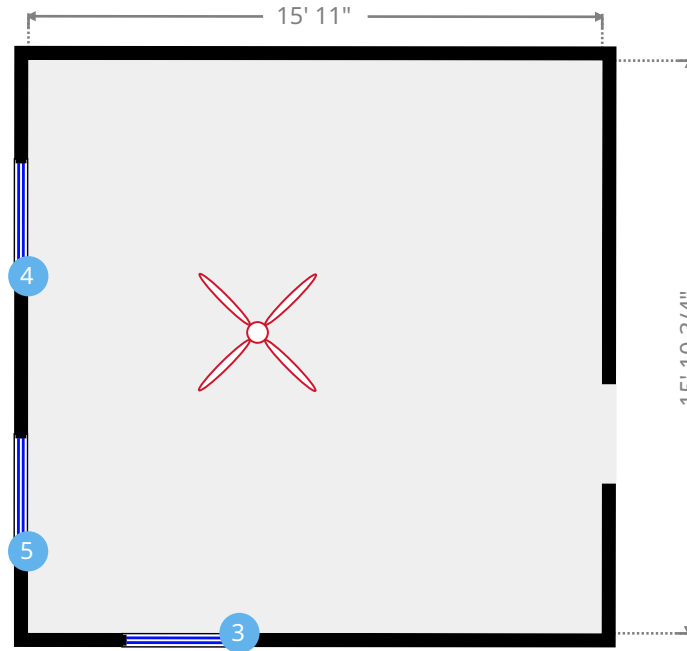
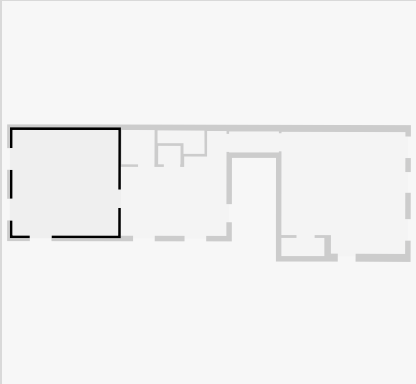
2  Hung Window - Height: 7' 4"

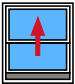
THIS FLOORPLAN IS PROVIDED WITHOUT WARRANTY OF ANY KIND. NAZCA PROPERTIES DISCLAIMS ANY WARRANTY INCLUDING, WITHOUT LIMITATION, SATISFACTORY QUALITY OR ACCURACY OF DIMENSIONS.




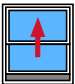
Bedroom

Width: 15' 10 3/4"
 Length: 15' 11"
 Area: 252.75 sq ft
 Perimeter: 63' 7"
 Ceiling Height: 10' 9"

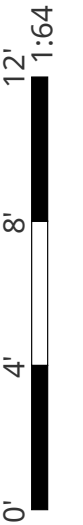


3  Hung Window - Height: 7' 4"

4  Hung Window - Height: 7' 4"

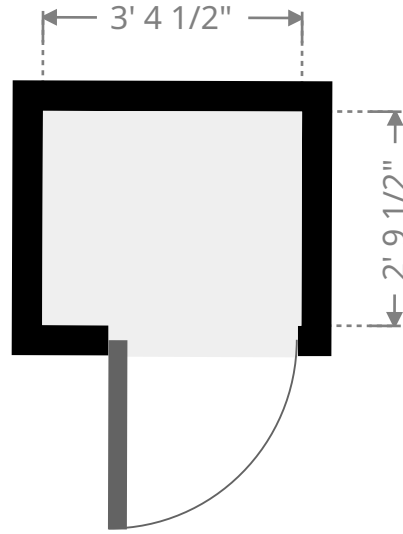
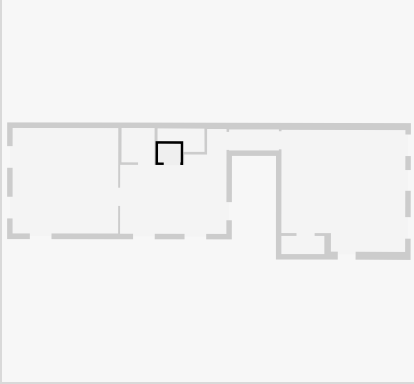
5  Hung Window - Height: 7' 4"

THIS FLOORPLAN IS PROVIDED WITHOUT WARRANTY OF ANY KIND. NAZCA PROPERTIES
 DISCLAIMS ANY WARRANTY INCLUDING, WITHOUT LIMITATION, SATISFACTORY QUALITY OR
 ACCURACY OF DIMENSIONS.



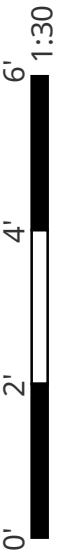
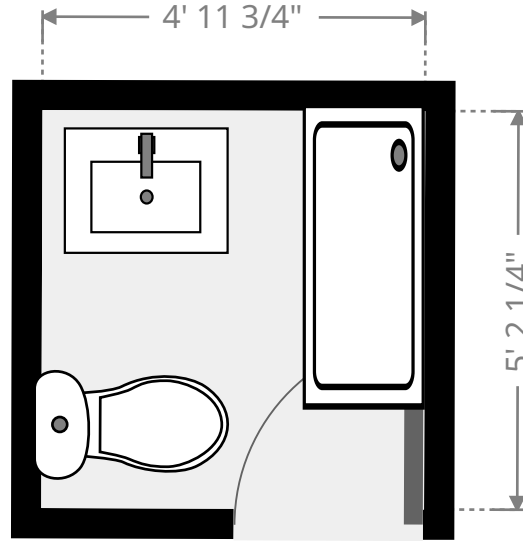
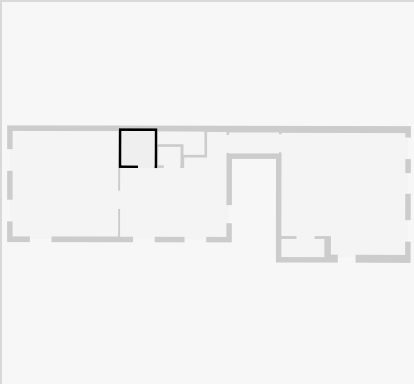
Closet

Width: 2' 9 1/2"
Length: 3' 4 1/2"
Area: 9.39 sq ft
Perimeter: 12' 3 3/4"
Ceiling Height: 10' 9"



Bathroom

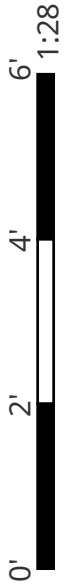
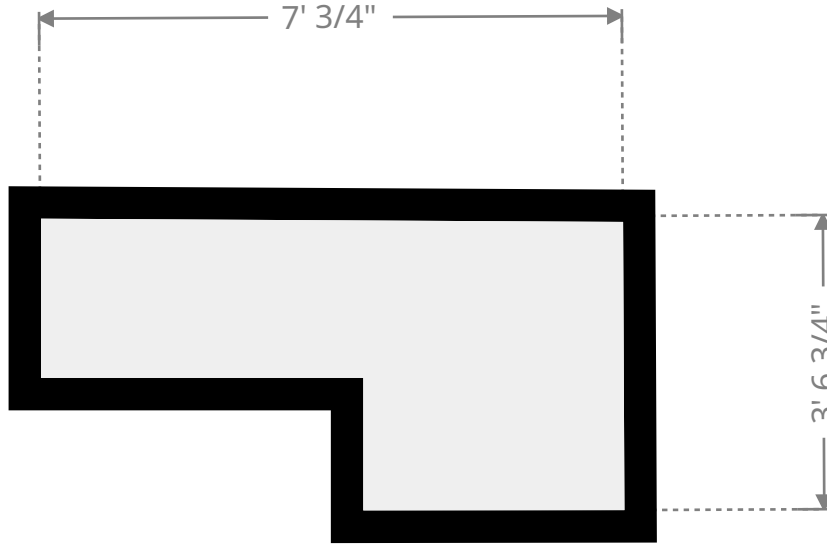
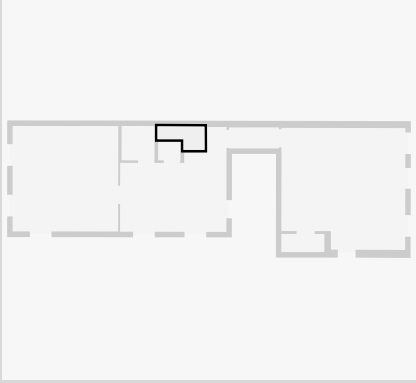
Width: 4' 11 3/4"
Length: 5' 2 1/4"
Area: 25.77 sq ft
Perimeter: 20' 3 3/4"
Ceiling Height: 10' 9"



THIS FLOORPLAN IS PROVIDED WITHOUT WARRANTY OF ANY KIND. NAZCA PROPERTIES
DISCLAIMS ANY WARRANTY INCLUDING, WITHOUT LIMITATION, SATISFACTORY QUALITY OR
ACCURACY OF DIMENSIONS.

Furnace Room

Width: 3' 6 3/4"
Length: 7' 3/4"
Area: 18.60 sq ft
Perimeter: 21' 2 1/4"
Ceiling Height: 10' 9"



THIS FLOORPLAN IS PROVIDED WITHOUT WARRANTY OF ANY KIND. NAZCA PROPERTIES
DISCLAIMS ANY WARRANTY INCLUDING, WITHOUT LIMITATION, SATISFACTORY QUALITY OR
ACCURACY OF DIMENSIONS.