

519 W McMicken Av...

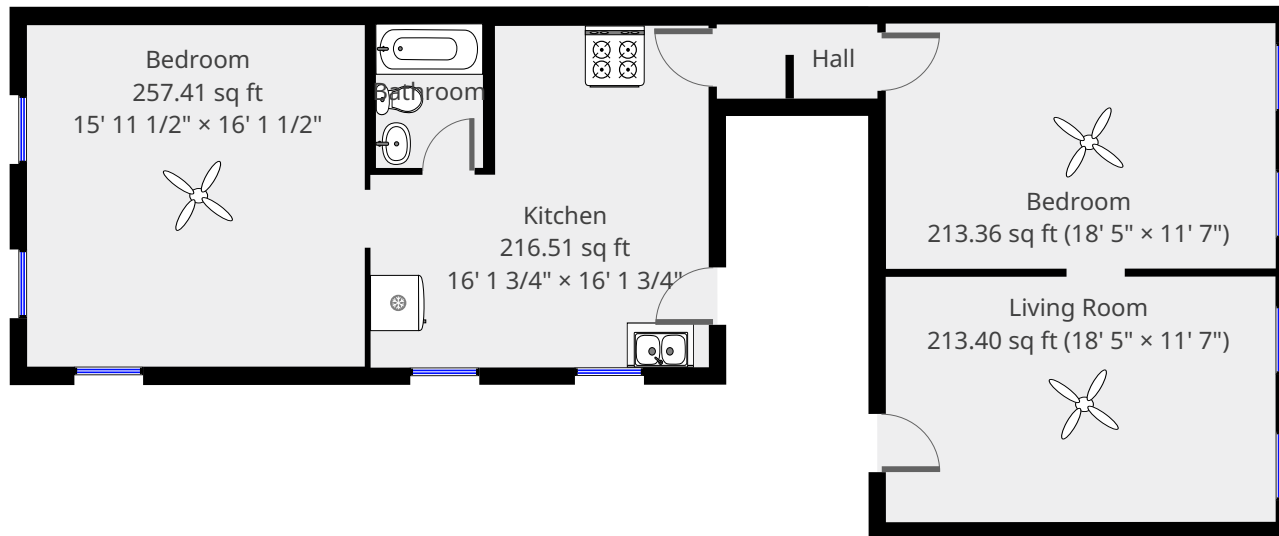
3rd Floor



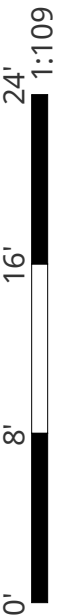
Nazca Properties
manager@nazcaproperties.com
513-535-2154

Statistics

Area: 1142 sq ft
1 Floor
2 Bedrooms
1 Bathroom

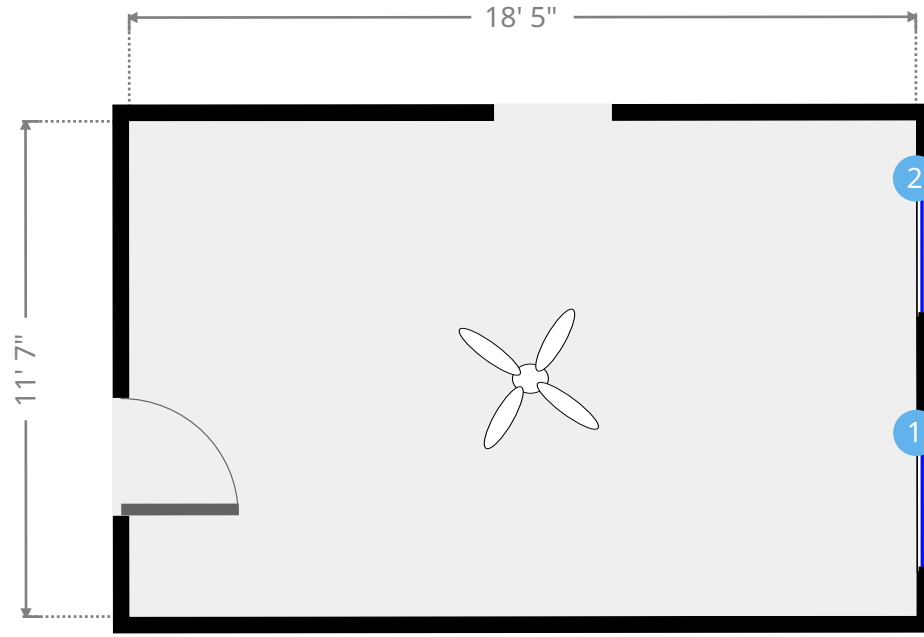
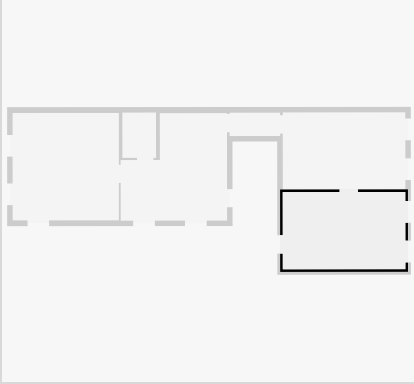


THIS FLOORPLAN IS PROVIDED WITHOUT WARRANTY OF ANY KIND. NAZCA PROPERTIES
DISCLAIMS ANY WARRANTY INCLUDING, WITHOUT LIMITATION, SATISFACTORY QUALITY OR
ACCURACY OF DIMENSIONS.



Living Room

Width: 11' 7"
Length: 18' 5"
Area: 213.40 sq ft
Perimeter: 60'
Ceiling Height: 10'



1



Hung Window

- Height: 6' 7 1/2"

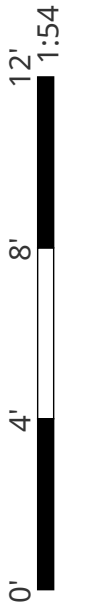
2



Hung Window

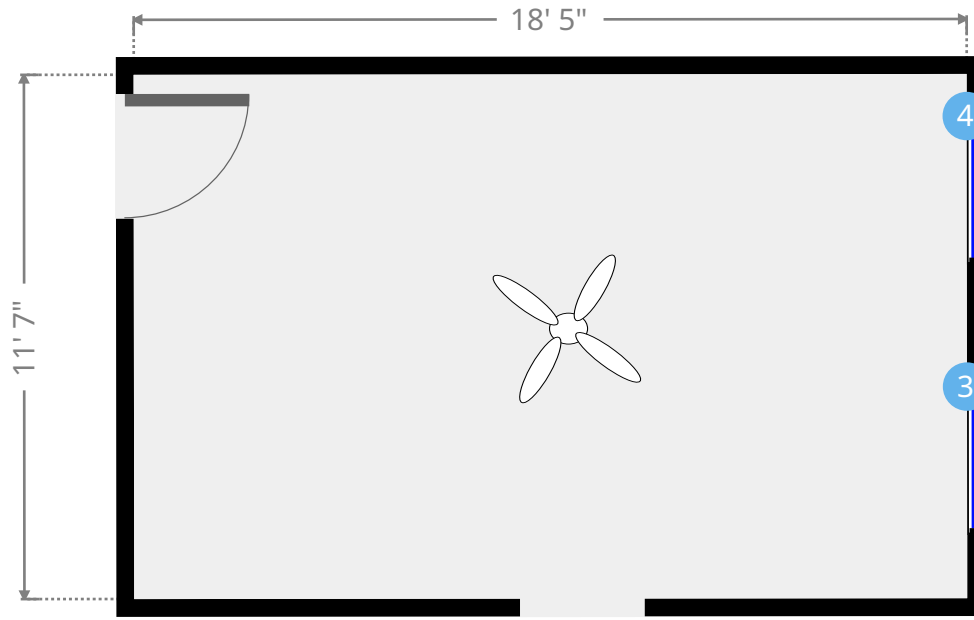
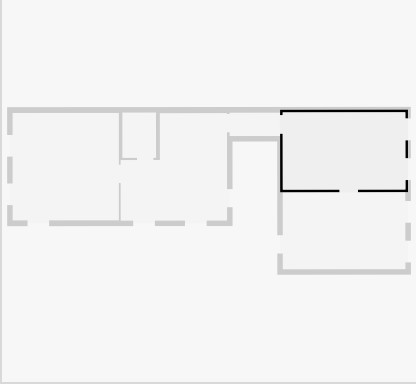
- Height: 6' 7 1/2"

THIS FLOORPLAN IS PROVIDED WITHOUT WARRANTY OF ANY KIND. NAZCA PROPERTIES
DISCLAIMS ANY WARRANTY INCLUDING, WITHOUT LIMITATION, SATISFACTORY QUALITY OR
ACCURACY OF DIMENSIONS.



Bedroom

Width: 11' 7"
Length: 18' 5"
Area: 213.36 sq ft
Perimeter: 60'
Ceiling Height: 10'



3



Hung Window

- Height: 6' 7 1/2"

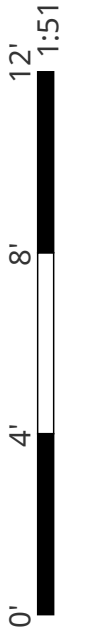
4



Hung Window

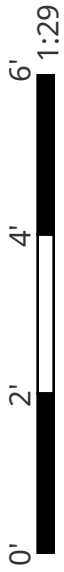
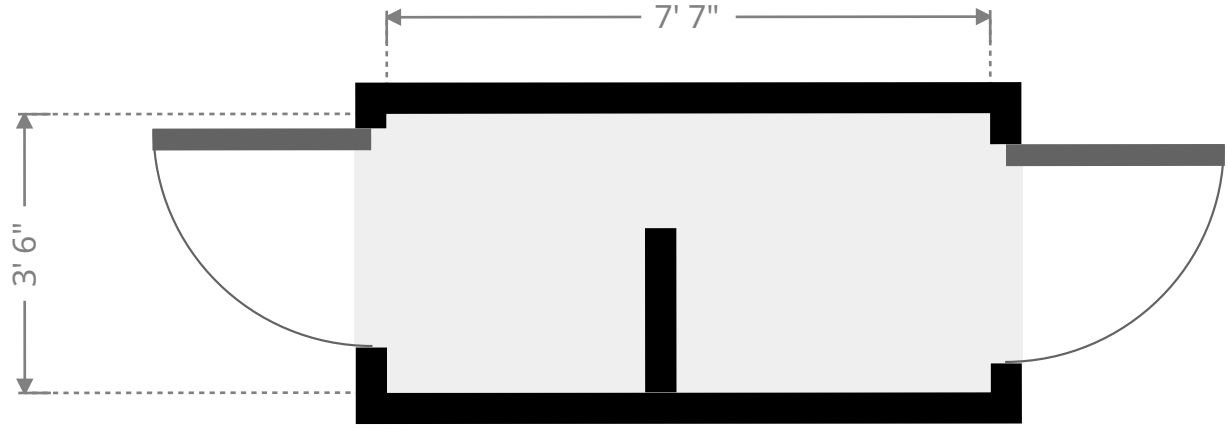
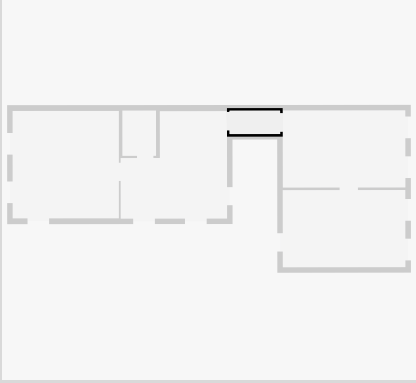
- Height: 6' 7 1/2"

THIS FLOORPLAN IS PROVIDED WITHOUT WARRANTY OF ANY KIND. NAZCA PROPERTIES DISCLAIMS ANY WARRANTY INCLUDING, WITHOUT LIMITATION, SATISFACTORY QUALITY OR ACCURACY OF DIMENSIONS.



Hall

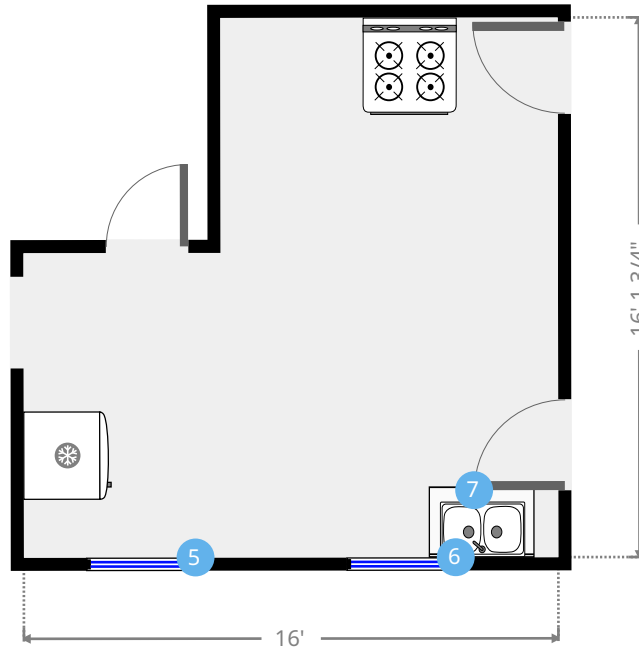
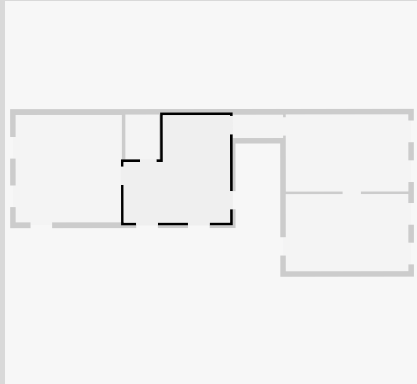
Width: 3' 6"
Length: 7' 7"
Area: 26.58 sq ft
Perimeter: 22' 2 1/4"
Ceiling Height: 10'

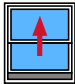



THIS FLOORPLAN IS PROVIDED WITHOUT WARRANTY OF ANY KIND. NAZCA PROPERTIES
DISCLAIMS ANY WARRANTY INCLUDING, WITHOUT LIMITATION, SATISFACTORY QUALITY OR
ACCURACY OF DIMENSIONS.

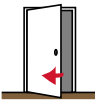
Kitchen

Width: 16' 1 3/4"
 Length: 16' 1 3/4"
 Area: 216.51 sq ft
 Perimeter: 64' 3"
 Ceiling Height: 10'



5  Hung Window - Height: 6' 7 3/4"

6  Hung Window - Height: 6' 7 3/4"

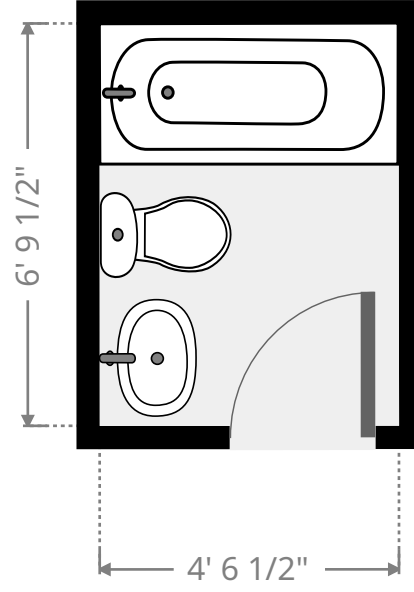
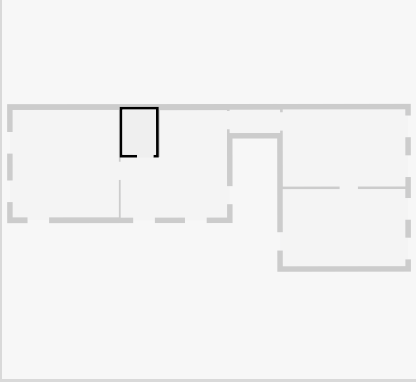
7  Hinged Door - Height: 6' 11 1/2"

THIS FLOORPLAN IS PROVIDED WITHOUT WARRANTY OF ANY KIND. NAZCA PROPERTIES
 DISCLAIMS ANY WARRANTY INCLUDING, WITHOUT LIMITATION, SATISFACTORY QUALITY OR
 ACCURACY OF DIMENSIONS.



Bathroom

Width: 5' 3/4"
Length: 6' 9 1/2"
Area: 34.39 sq ft
Perimeter: 23' 8 1/2"
Ceiling Height: 10'

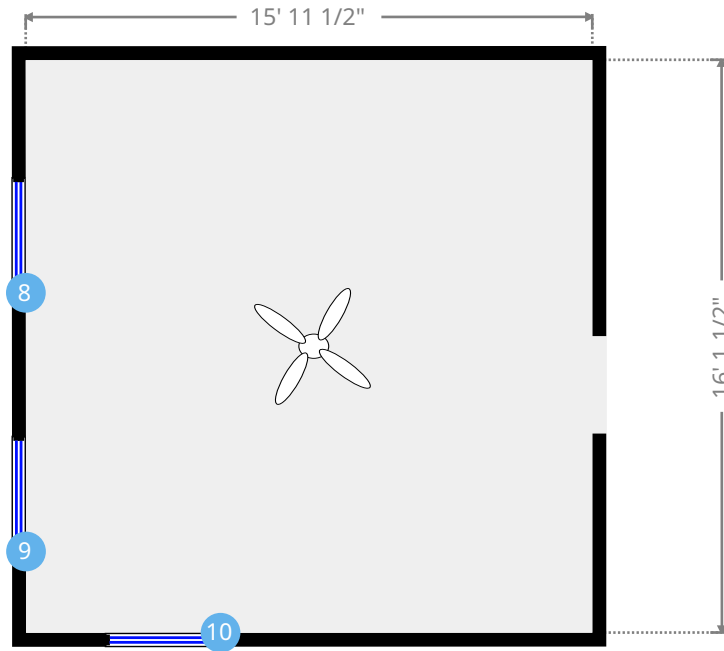
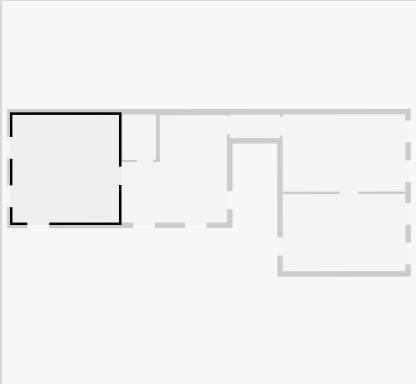


1:39

THIS FLOORPLAN IS PROVIDED WITHOUT WARRANTY OF ANY KIND. NAZCA PROPERTIES
DISCLAIMS ANY WARRANTY INCLUDING, WITHOUT LIMITATION, SATISFACTORY QUALITY OR
ACCURACY OF DIMENSIONS.

Bedroom

Width: 15' 11 1/2"
 Length: 16' 1 1/2"
 Area: 257.41 sq ft
 Perimeter: 64' 2"
 Ceiling Height: 10'



8



Hung Window

- Height: 6' 7"

9



Hung Window

- Height: 6' 7"

10



Hung Window

- Height: 6' 7"

THIS FLOORPLAN IS PROVIDED WITHOUT WARRANTY OF ANY KIND. NAZCA PROPERTIES
 DISCLAIMS ANY WARRANTY INCLUDING, WITHOUT LIMITATION, SATISFACTORY QUALITY OR
 ACCURACY OF DIMENSIONS.

