

519 W  
McMicken Av...

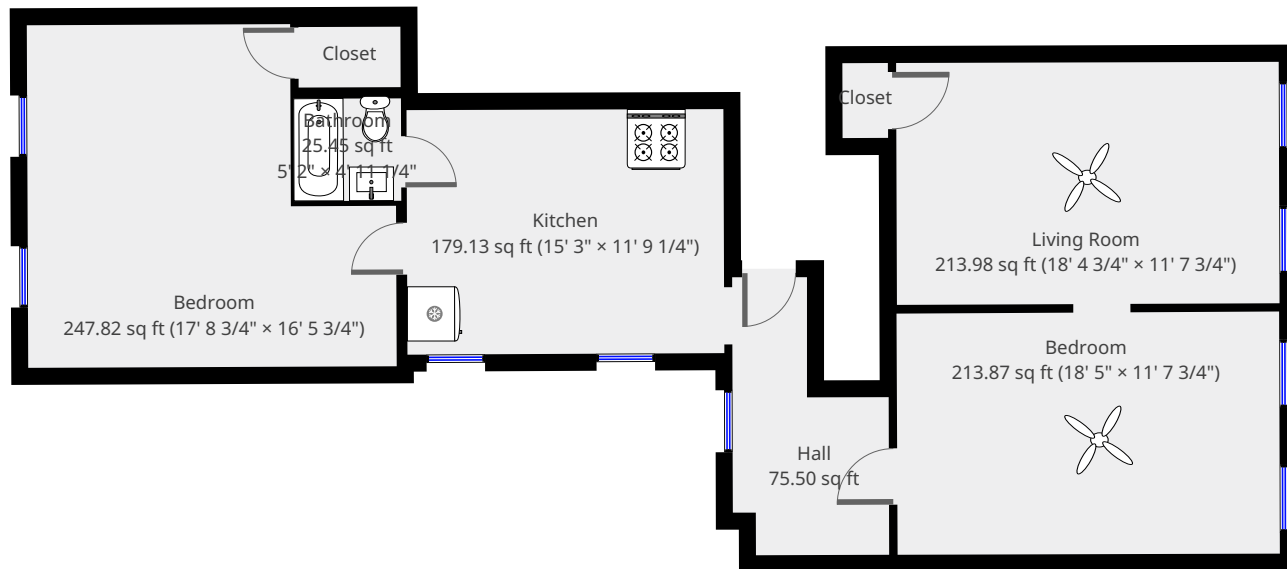
4th Floor



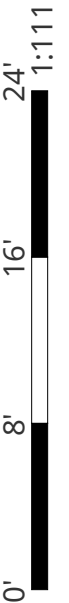
**Nazca Properties**  
manager@nazcaproperties.com  
513-535-2154

## Statistics

Area: 1177 sq ft  
1 Floor  
2 Bedrooms  
1 Bathroom

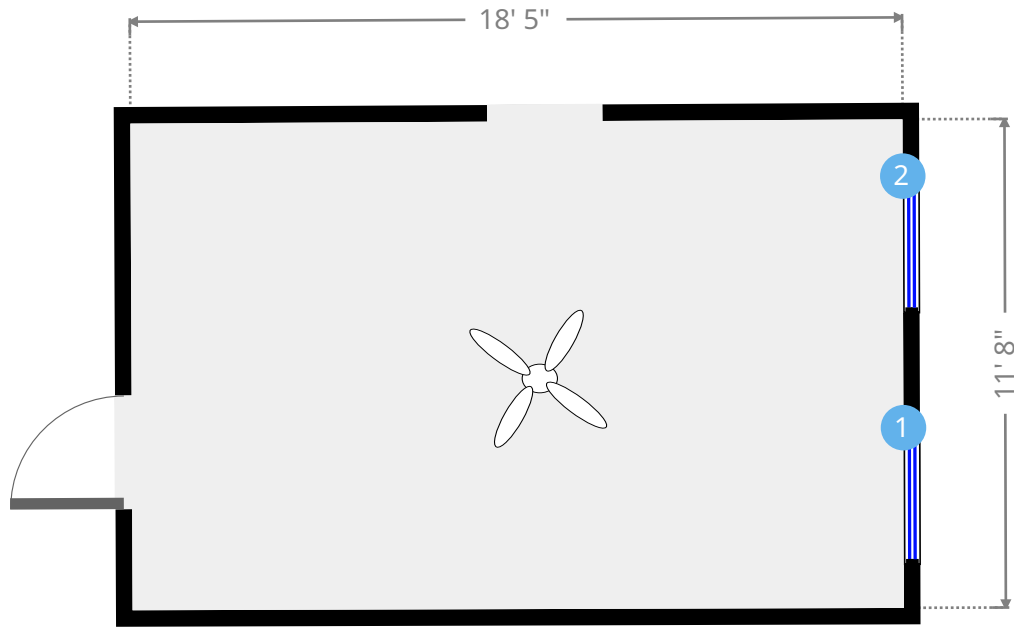
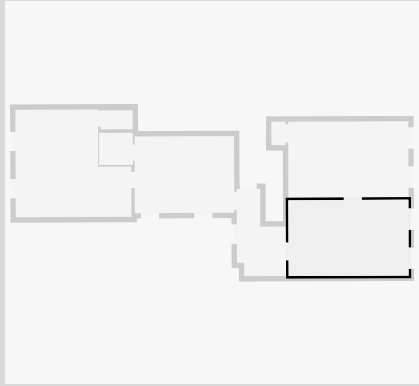


THIS FLOORPLAN IS PROVIDED WITHOUT WARRANTY OF ANY KIND. NAZCA PROPERTIES  
DISCLAIMS ANY WARRANTY INCLUDING, WITHOUT LIMITATION, SATISFACTORY QUALITY OR  
ACCURACY OF DIMENSIONS.



# Bedroom

Width: 11' 7 3/4"  
Length: 18' 5"  
Area: 213.87 sq ft  
Perimeter: 60' 1/2"  
Ceiling Height: 9' 11 1/2"



1



Hung Window

- Height: 6' 7 1/2"

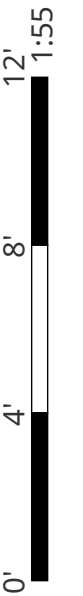
2



Hung Window

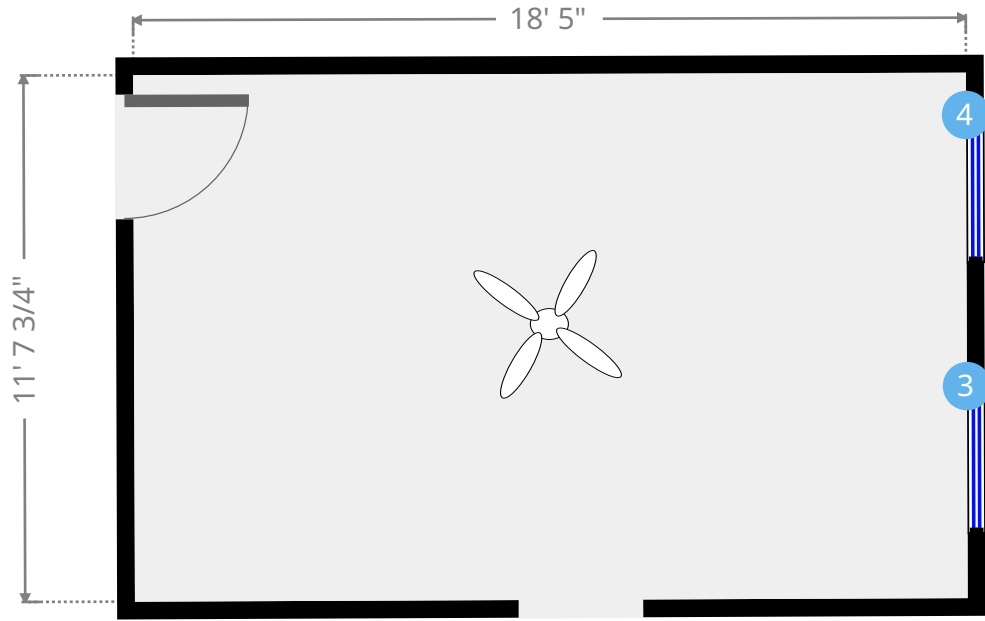
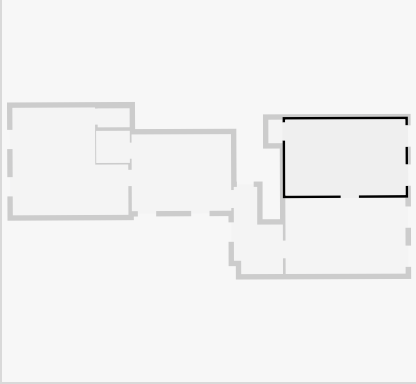
- Height: 6' 7 1/2"

THIS FLOORPLAN IS PROVIDED WITHOUT WARRANTY OF ANY KIND. NAZCA PROPERTIES  
DISCLAIMS ANY WARRANTY INCLUDING, WITHOUT LIMITATION, SATISFACTORY QUALITY OR  
ACCURACY OF DIMENSIONS.



# Living Room

Width: 11' 7 3/4"  
 Length: 18' 4 3/4"  
 Area: 213.98 sq ft  
 Perimeter: 60' 3/4"  
 Ceiling Height: 9' 11 1/2"



3



Hung Window

- Height: 6' 7 1/2"

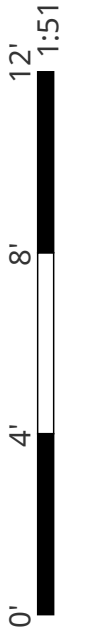
4



Hung Window

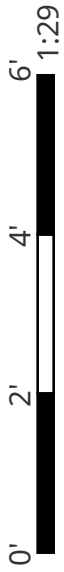
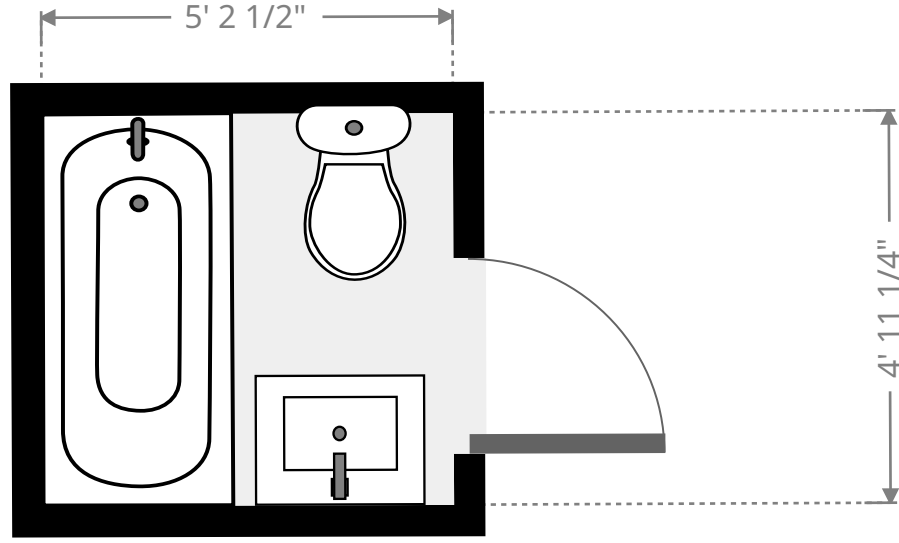
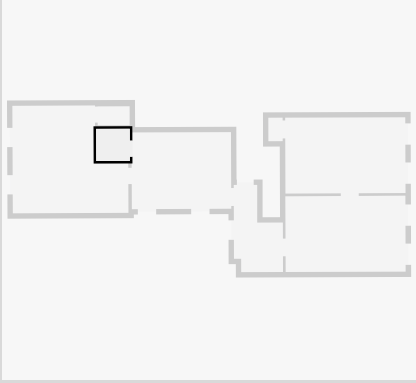
- Height: 6' 7 1/2"

THIS FLOORPLAN IS PROVIDED WITHOUT WARRANTY OF ANY KIND. NAZCA PROPERTIES  
 DISCLAIMS ANY WARRANTY INCLUDING, WITHOUT LIMITATION, SATISFACTORY QUALITY OR  
 ACCURACY OF DIMENSIONS.



# Bathroom

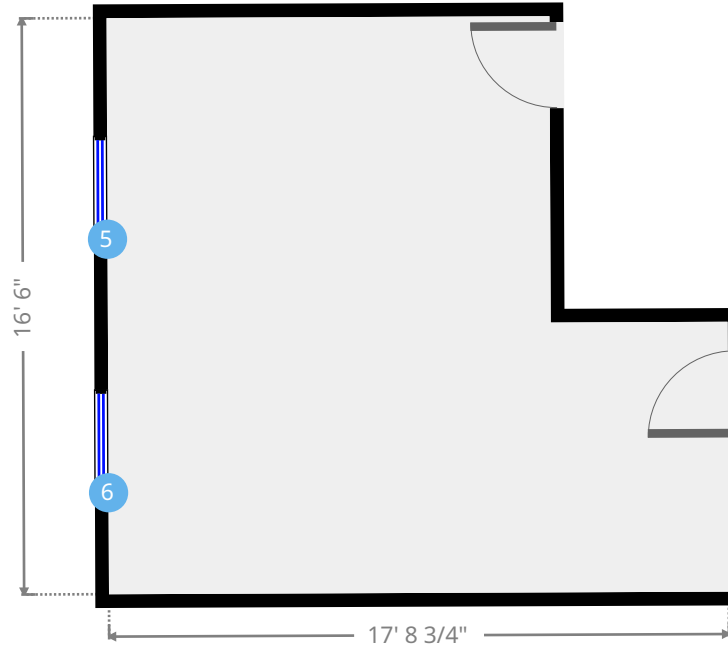
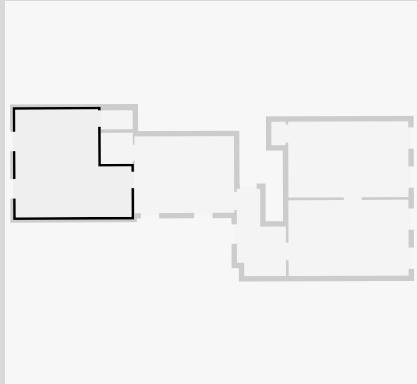
Width: 4' 11 1/4"  
Length: 5' 2"  
Area: 25.45 sq ft  
Perimeter: 20' 2 1/4"  
Ceiling Height: 9' 11 1/2"



THIS FLOORPLAN IS PROVIDED WITHOUT WARRANTY OF ANY KIND. NAZCA PROPERTIES  
DISCLAIMS ANY WARRANTY INCLUDING, WITHOUT LIMITATION, SATISFACTORY QUALITY OR  
ACCURACY OF DIMENSIONS.

# Bedroom

Width: 16' 5 3/4"  
 Length: 17' 8 3/4"  
 Area: 247.82 sq ft  
 Perimeter: 68' 5"  
 Ceiling Height: 9' 11 1/2"



5



Hung Window

- Height: 3' 1 3/4"

6



Hung Window

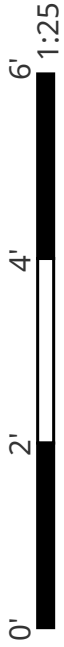
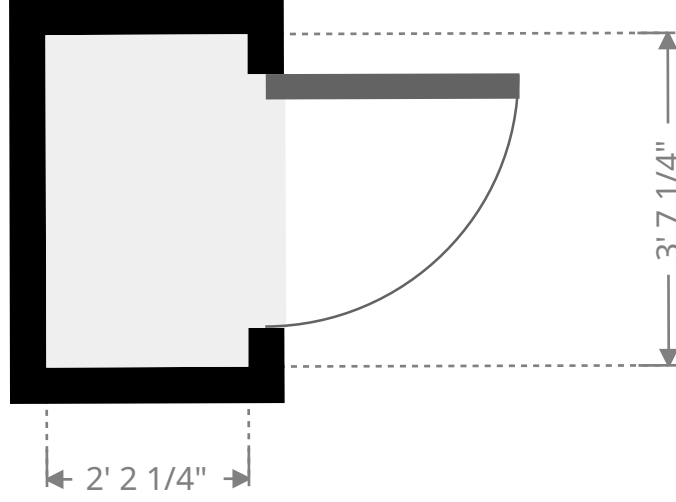
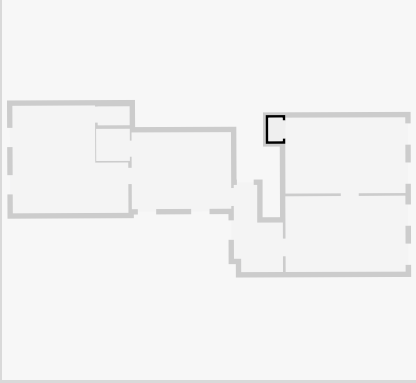
- Height: 3' 1 3/4"

THIS FLOORPLAN IS PROVIDED WITHOUT WARRANTY OF ANY KIND. NAZCA PROPERTIES  
 DISCLAIMS ANY WARRANTY INCLUDING, WITHOUT LIMITATION, SATISFACTORY QUALITY OR  
 ACCURACY OF DIMENSIONS.



# Closet

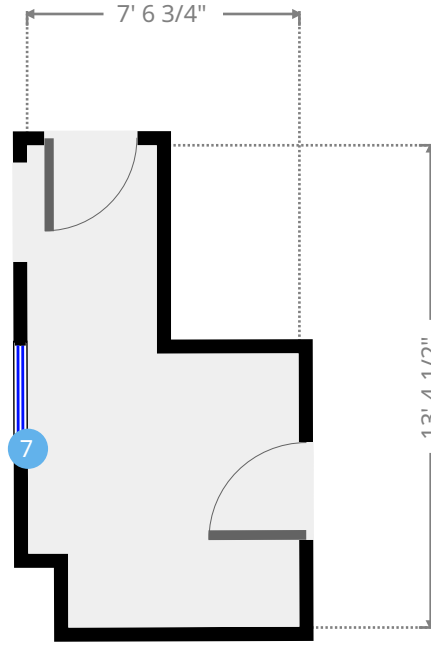
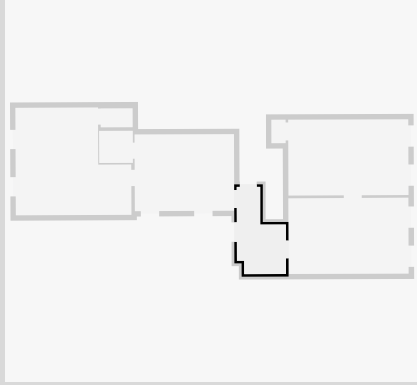
Width: 2' 2 1/4"  
Length: 3' 7 1/4"  
Area: 7.88 sq ft  
Perimeter: 11' 7"  
Ceiling Height: 9' 11 1/2"



THIS FLOORPLAN IS PROVIDED WITHOUT WARRANTY OF ANY KIND. NAZCA PROPERTIES  
DISCLAIMS ANY WARRANTY INCLUDING, WITHOUT LIMITATION, SATISFACTORY QUALITY OR  
ACCURACY OF DIMENSIONS.

# Hall

Width: 7' 6 3/4"  
Length: 13' 4 1/2"  
Area: 75.50 sq ft  
Perimeter: 41' 9 1/4"  
Ceiling Height: 9' 11 1/2"



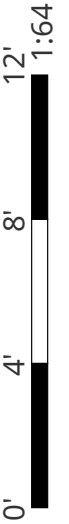
7



Hung Window

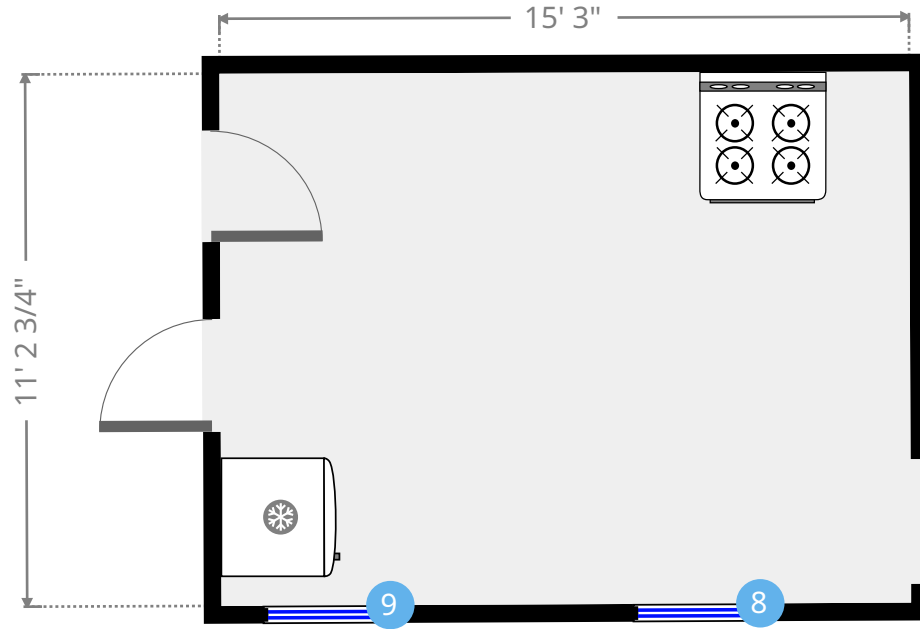
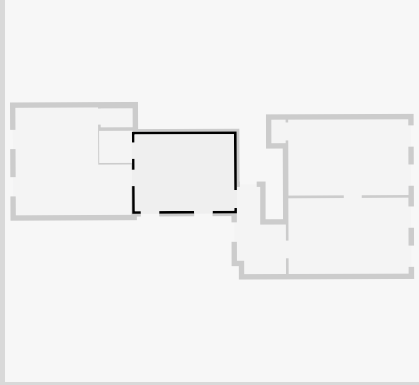
- Height: 6' 2 1/2"

THIS FLOORPLAN IS PROVIDED WITHOUT WARRANTY OF ANY KIND. NAZCA PROPERTIES  
DISCLAIMS ANY WARRANTY INCLUDING, WITHOUT LIMITATION, SATISFACTORY QUALITY OR  
ACCURACY OF DIMENSIONS.



# Kitchen

Width: 11' 9 1/4"  
 Length: 15' 3"  
 Area: 179.13 sq ft  
 Perimeter: 53' 11 3/4"  
 Ceiling Height: 9' 11 1/2"



8



Hung Window

- Height: 4' 5 1/2"

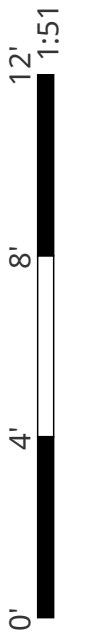
9



Hung Window

- Height: 4' 5 1/2"

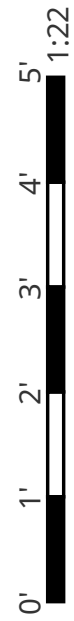
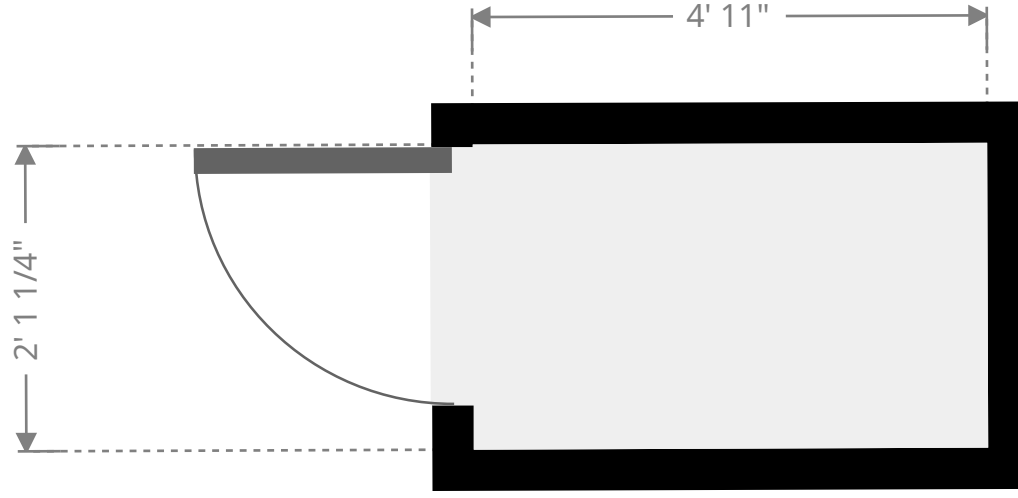
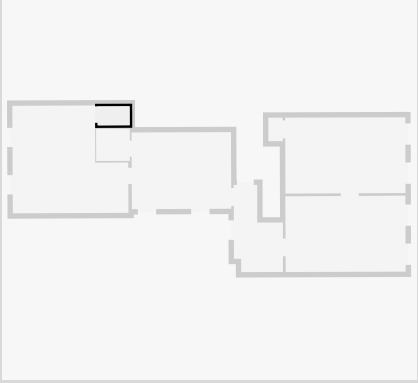
THIS FLOORPLAN IS PROVIDED WITHOUT WARRANTY OF ANY KIND. NAZCA PROPERTIES  
 DISCLAIMS ANY WARRANTY INCLUDING, WITHOUT LIMITATION, SATISFACTORY QUALITY OR  
 ACCURACY OF DIMENSIONS.





# Closet

Width: 2' 11"  
Length: 4' 11"  
Area: 14.28 sq ft  
Perimeter: 15' 7 1/2"  
Ceiling Height: 9' 11 1/2"



THIS FLOORPLAN IS PROVIDED WITHOUT WARRANTY OF ANY KIND. NAZCA PROPERTIES  
DISCLAIMS ANY WARRANTY INCLUDING, WITHOUT LIMITATION, SATISFACTORY QUALITY OR  
ACCURACY OF DIMENSIONS.